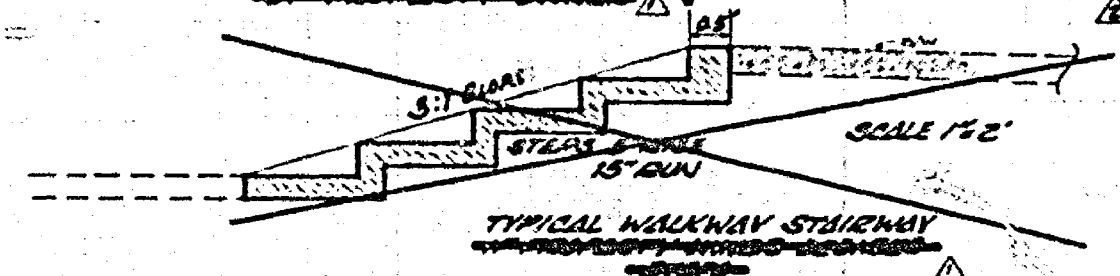
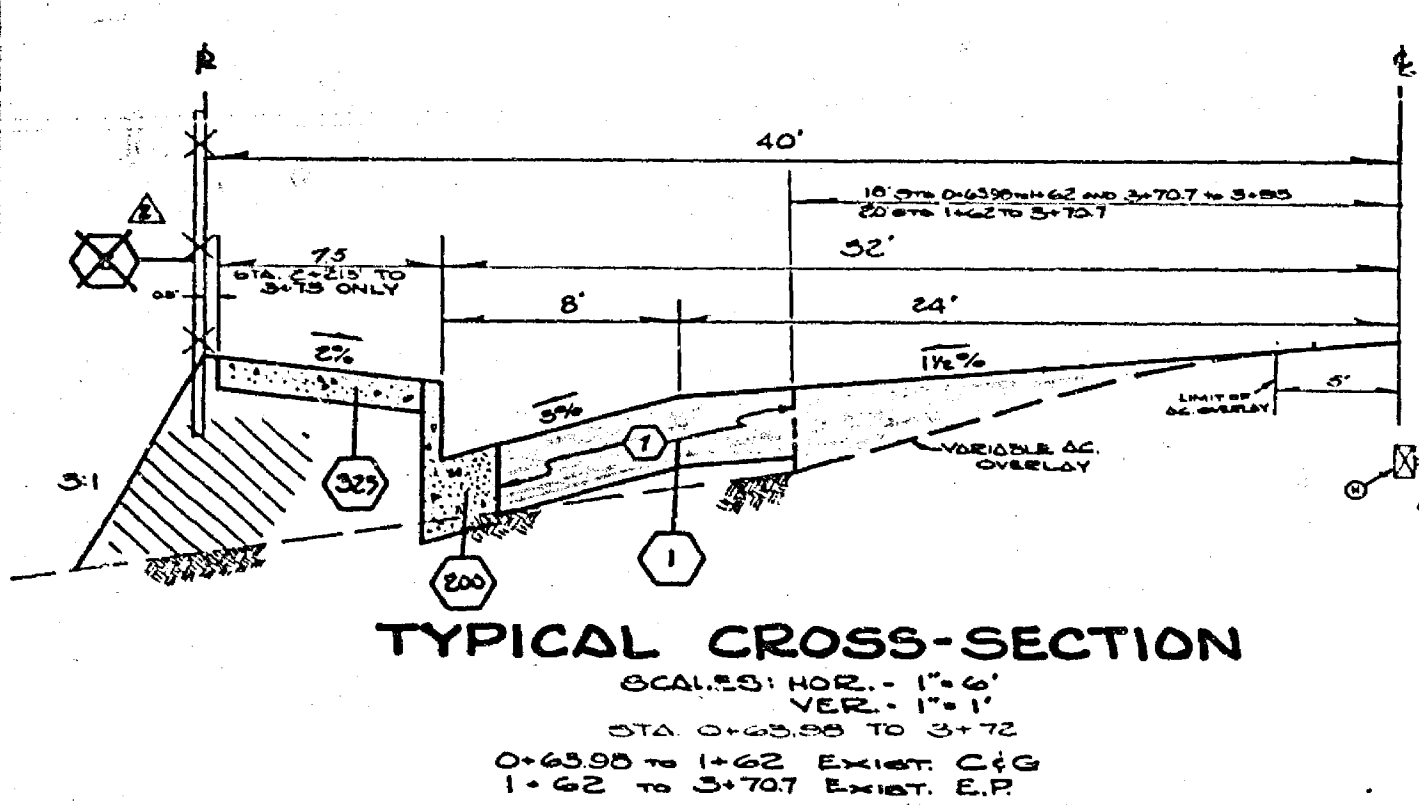


CONSTRUCTION NOTES

- CONSTRUCTION TO BE IN ACCORDANCE WITH STANDARD SPECIFICATIONS FOR PUBLIC WORKS CONSTRUCTION, 1975 EDITION.
- CURB AND GUTTER, STD. DWG. NO. 600, 6" C.F.
- CONSTRUCT S/W AS PER STD. DWG. NO. 323
- CONSTRUCT D/W APPROACHES AS PER STD. DWG. NO. 302
- INDICATES CONST. VARIABLE THICKNESS A.C. OVERLAY
- CONSTRUCT 0.45" FULL DEPTH A.C.
- EDGE FINISH TO NEW GRADE
- CONSTRUCT 2" THICK A.C. DRIVEWAYS TO MATCH
- REMOVE EXISTING STREET IMPROVEMENTS, WHERE NECESSARY
- REMOVE EXISTING STREET IMPROVEMENTS, WHERE NECESSARY



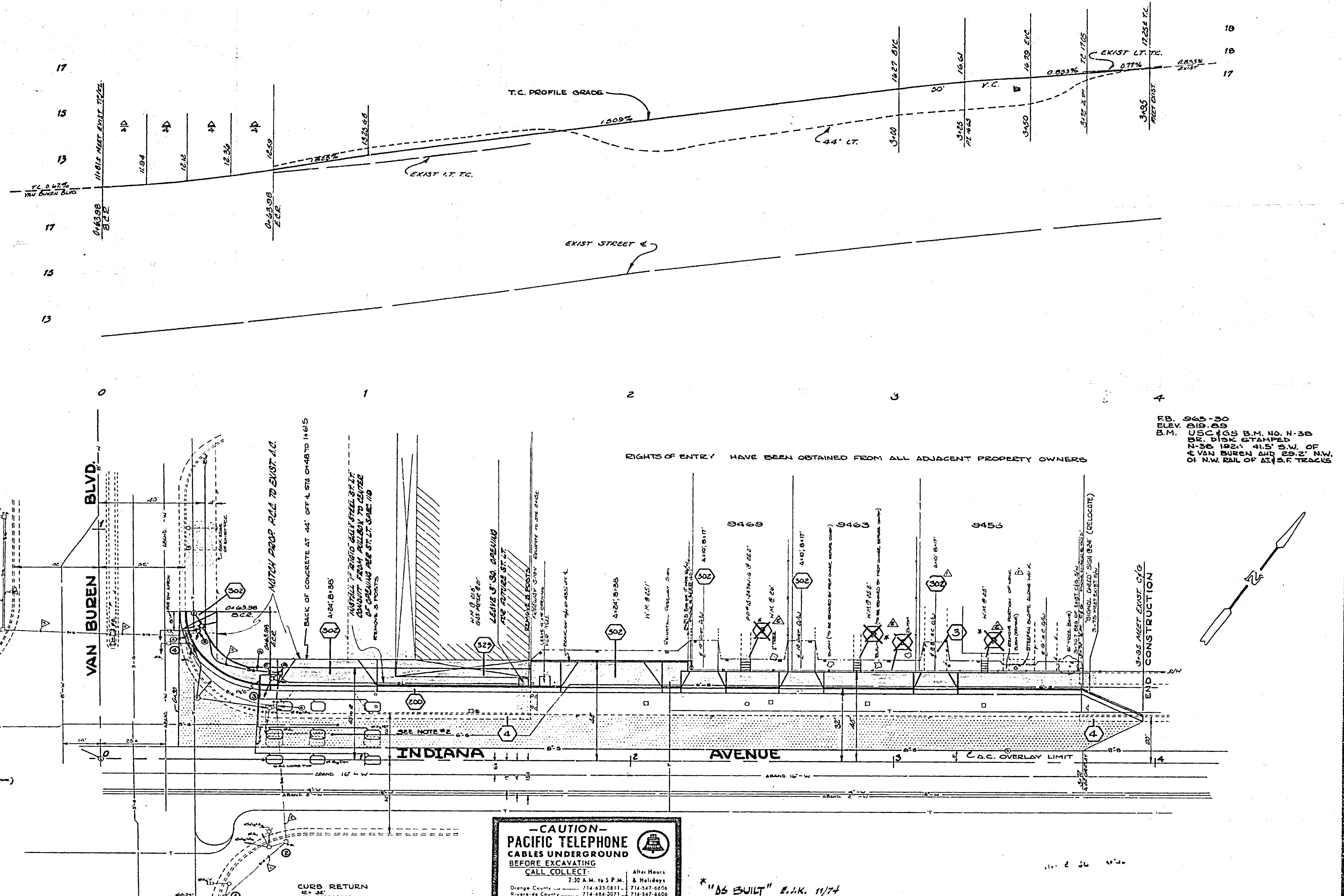
CONTROL FUNCTION	CONDUCTOR	CONDUIT	FOUNDATION	EQUIPMENT
1	14	1 1/2"	12"	12"
2	14	1 1/2"	12"	12"
3	14	1 1/2"	12"	12"
4	14	1 1/2"	12"	12"
5	14	1 1/2"	12"	12"
6	14	1 1/2"	12"	12"
7	14	1 1/2"	12"	12"
8	14	1 1/2"	12"	12"
9	14	1 1/2"	12"	12"
10	14	1 1/2"	12"	12"
11	14	1 1/2"	12"	12"
12	14	1 1/2"	12"	12"
13	14	1 1/2"	12"	12"
14	14	1 1/2"	12"	12"
15	14	1 1/2"	12"	12"
16	14	1 1/2"	12"	12"
17	14	1 1/2"	12"	12"
18	14	1 1/2"	12"	12"
19	14	1 1/2"	12"	12"
20	14	1 1/2"	12"	12"
21	14	1 1/2"	12"	12"
22	14	1 1/2"	12"	12"
23	14	1 1/2"	12"	12"
24	14	1 1/2"	12"	12"
25	14	1 1/2"	12"	12"
26	14	1 1/2"	12"	12"
27	14	1 1/2"	12"	12"
28	14	1 1/2"	12"	12"
29	14	1 1/2"	12"	12"
30	14	1 1/2"	12"	12"
31	14	1 1/2"	12"	12"
32	14	1 1/2"	12"	12"
33	14	1 1/2"	12"	12"
34	14	1 1/2"	12"	12"
35	14	1 1/2"	12"	12"
36	14	1 1/2"	12"	12"
37	14	1 1/2"	12"	12"
38	14	1 1/2"	12"	12"
39	14	1 1/2"	12"	12"
40	14	1 1/2"	12"	12"
41	14	1 1/2"	12"	12"
42	14	1 1/2"	12"	12"
43	14	1 1/2"	12"	12"
44	14	1 1/2"	12"	12"
45	14	1 1/2"	12"	12"
46	14	1 1/2"	12"	12"
47	14	1 1/2"	12"	12"
48	14	1 1/2"	12"	12"
49	14	1 1/2"	12"	12"
50	14	1 1/2"	12"	12"
51	14	1 1/2"	12"	12"
52	14	1 1/2"	12"	12"
53	14	1 1/2"	12"	12"
54	14	1 1/2"	12"	12"
55	14	1 1/2"	12"	12"
56	14	1 1/2"	12"	12"
57	14	1 1/2"	12"	12"
58	14	1 1/2"	12"	12"
59	14	1 1/2"	12"	12"
60	14	1 1/2"	12"	12"
61	14	1 1/2"	12"	12"
62	14	1 1/2"	12"	12"
63	14	1 1/2"	12"	12"
64	14	1 1/2"	12"	12"
65	14	1 1/2"	12"	12"
66	14	1 1/2"	12"	12"
67	14	1 1/2"	12"	12"
68	14	1 1/2"	12"	12"
69	14	1 1/2"	12"	12"
70	14	1 1/2"	12"	12"
71	14	1 1/2"	12"	12"
72	14	1 1/2"	12"	12"
73	14	1 1/2"	12"	12"
74	14	1 1/2"	12"	12"
75	14	1 1/2"	12"	12"
76	14	1 1/2"	12"	12"
77	14	1 1/2"	12"	12"
78	14	1 1/2"	12"	12"
79	14	1 1/2"	12"	12"
80	14	1 1/2"	12"	12"
81	14	1 1/2"	12"	12"
82	14	1 1/2"	12"	12"
83	14	1 1/2"	12"	12"
84	14	1 1/2"	12"	12"
85	14	1 1/2"	12"	12"
86	14	1 1/2"	12"	12"
87	14	1 1/2"	12"	12"
88	14	1 1/2"	12"	12"
89	14	1 1/2"	12"	12"
90	14	1 1/2"	12"	12"
91	14	1 1/2"	12"	12"
92	14	1 1/2"	12"	12"
93	14	1 1/2"	12"	12"
94	14	1 1/2"	12"	12"
95	14	1 1/2"	12"	12"
96	14	1 1/2"	12"	12"
97	14	1 1/2"	12"	12"
98	14	1 1/2"	12"	12"
99	14	1 1/2"	12"	12"
100	14	1 1/2"	12"	12"



TRAFFIC SIGNAL CONSTRUCTION NOTES

- NOTIFY TRAFFIC ENG. REPRESENTATIVE 3 787-7576 48 HOURS PRIOR TO START OF SIGNAL WORK.
- INSTALL DETECTOR LOOPS AS DIRECTED BY TRAFFIC ENG. REPRESENTATIVE.
- INSTALL NEW CONDUCTORS FROM CONTROLLER TO STDS. AT LOC. 1, 2, 3, 4, AND 2 ADDITIONAL A₃ LEAD IN CABLES TO LOC. 3 ("WEST")
- INTERCEPT EXIST. 2" CONDUIT, EXTEND AS SHOWN.
- INSTALL SALVAGED TYPE XXII STD. AND EQUIP. ON NEW FOUNDATION AND CONDUIT.
- INSTALL SALVAGED TYPE I STD. AND EQUIP. ON NEW FOUNDATION AND CONDUIT.
- INSTALL NEW #6 RB.
- INSTALL NEW #5 RB.
- SALVAGE AND RELOCATE EXIST. STDS. REMOVE FOOTINGS, PULL BOXES AND CONDUIT.
- INSTALL 2 1/2" CONDUIT.
- MODIFY CONTROLLER FOR 2 ADDITIONAL A₃ SENSOR UNITS.

ALL WORK SHALL BE DONE IN ACCORDANCE WITH SECTION 65 "SIGNALS & LIGHTING" OF THE STANDARD SPECIFICATIONS, DATED JANUARY 1975 OF THE STATE OF CALIFORNIA, DEPT. OF TRANSPORTATION AND APPLICABLE CITY OF RIVERSIDE STANDARD SPECIFICATIONS AND SPECIAL PROVISIONS.



FB. 945-30
ELEV. 816.88
B.M.
USC 435 B.M. NO. N-38
BE. DISK STAMPED
N-38 1924 415' S.W. OF
4 VAN BUREN AND 232' N.W.
OF N.W. RAIL OF A.T.&P.F. TRACKS

CAUTION - PACIFIC TELEPHONE CABLES UNDERGROUND BEFORE EXCAVATING

CALL COLLECT: 730 A.M. to 5 P.M. After Hours
Orange County: 714-633-0811 714-547-6656
Riverside County: 714-684-2071 714-547-6656

CITY OF RIVERSIDE PUBLIC WORKS DEPARTMENT

INDIANA AVENUE WIDENING

NORTHWESTERLY SIDE, FROM VAN BUREN BLVD TO 370 FEET NORTHEASTERLY.

ACCOUNT NO. 31-35-14.7
R-1701
SHEET 1 OF 1
FILE NO.

DESIGNED BY: [Signature] DRAWN BY: [Signature] CHECKED BY: [Signature]
DATE: 11-14-73

HORIZ. SCALE: 1" = 20' VERT. SCALE: 1" = 2'