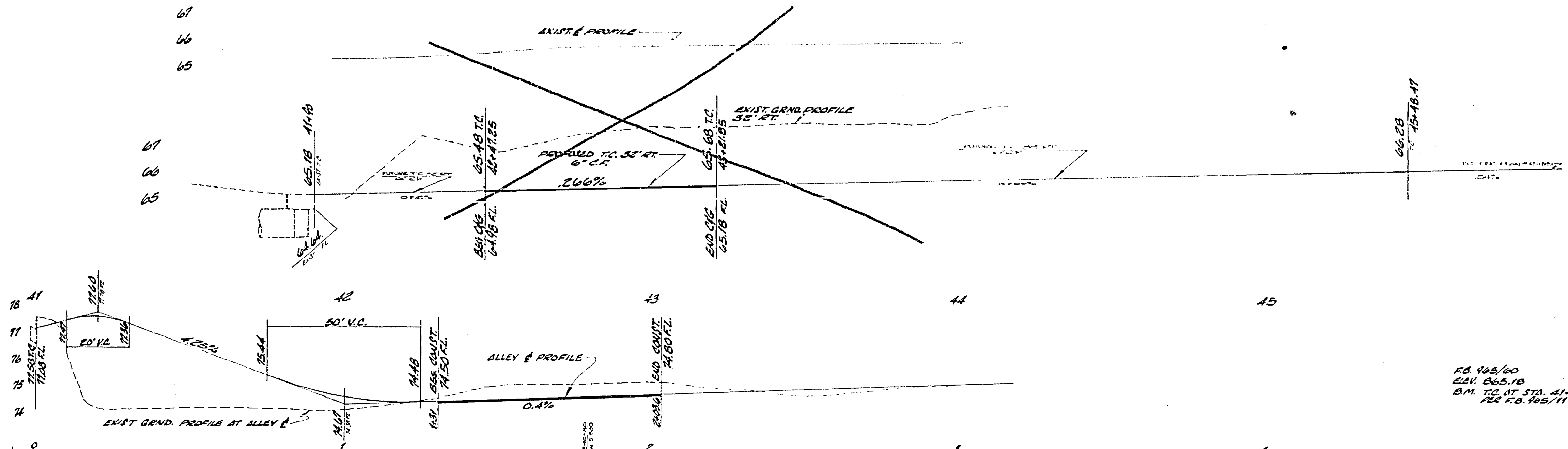


67
66
65

67
66
65

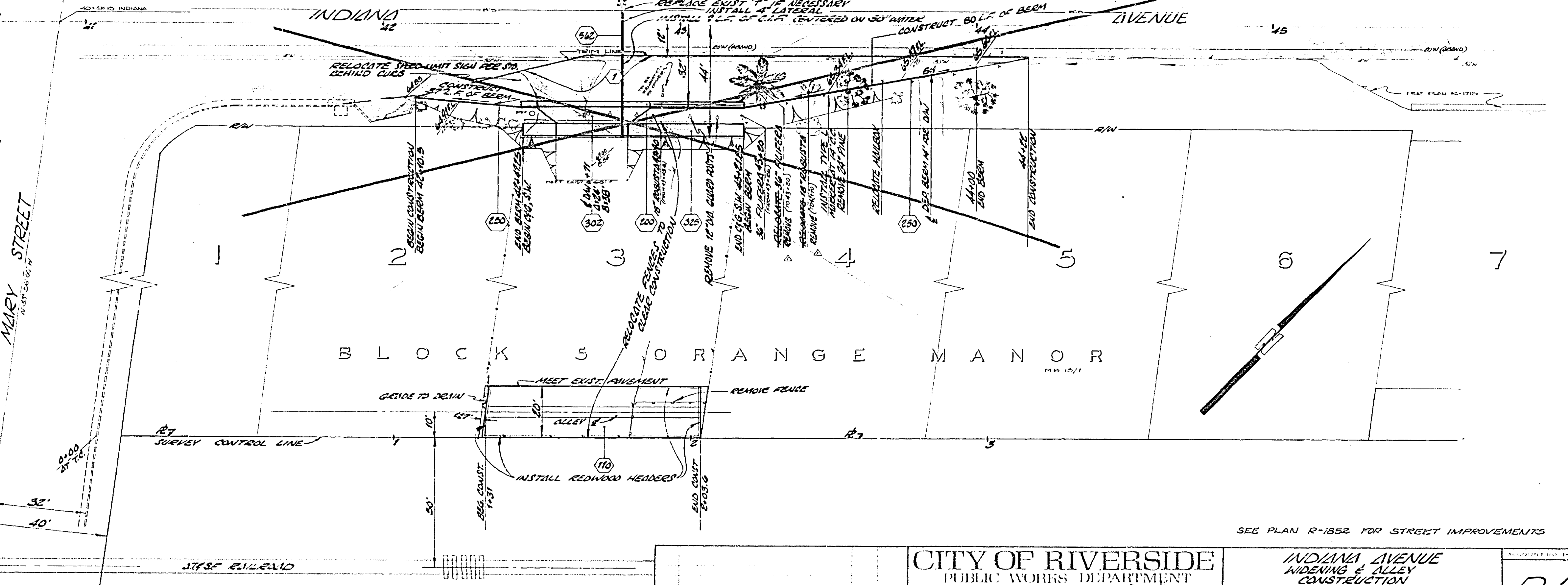
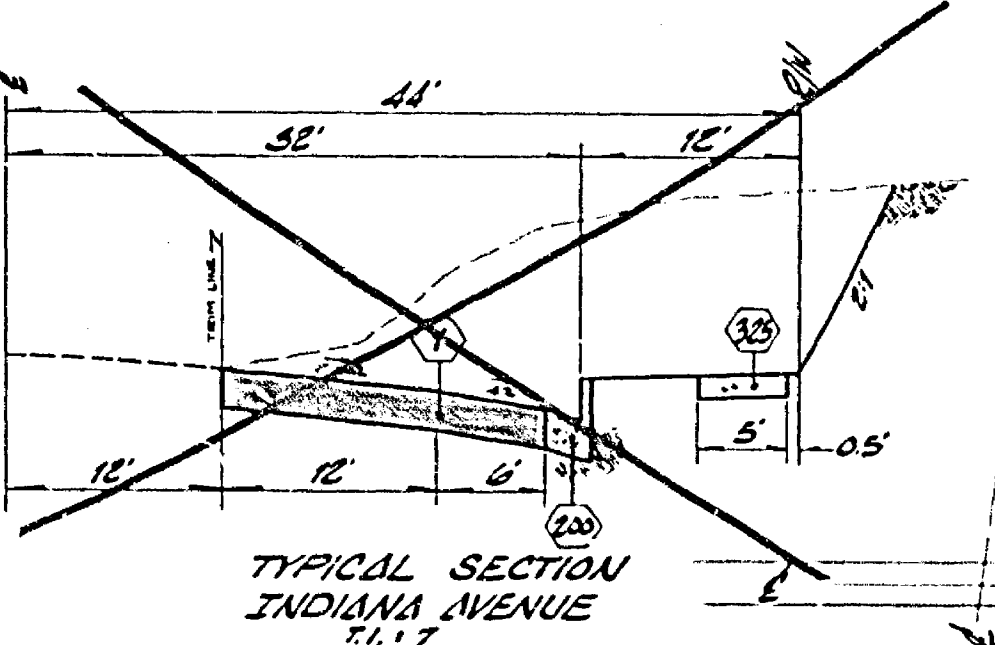
67
66
65



FB 945/00
 CIV. 665.18
 B.M. T.C. AT STA. 41+90
 PER F.B. 965/11

CONSTRUCTION NOTES

1. ALL CONSTRUCTION SHALL BE IN ACCORDANCE WITH THE STANDARD SPECIFICATIONS FOR PUBLIC WORKS CONSTRUCTION, 1983 EDITION, AND C&G STD. DIVIS.
2. ALL FLAGGED ELEV. SHALL BE STAKED IN THE FIELD
3. EXIST. 6" FULL DEPTH A.C. PAVING OVER CONCRETE NATIVE SOIL ON 2" D.G. OVER 3" D.G.
4. CONST. ALLEY FEE STA. DWS. NO. 110, 4" FULL DEPTH A.C. OVER COMPACTED NATIVE OR 2" D.G. OVER 4" D.G.
5. CONST. 6" D.G. OVER 2" D.G.
6. UNITS AS SHOWN UNLESS OTHERWISE NOTED
7. EXIST. CURB ADJUSTMENT AS SHOWN
8. EXIST. & RECONSTRUCT CURB AS SHOWN
9. EXIST. & RECONSTRUCT CURB AS SHOWN
10. EXIST. & RECONSTRUCT CURB AS SHOWN
11. RELOCATE ALL TREES TO INDICATED LOCATION AND IN ACCORDANCE WITH FIELD RELOCATION DIST. SPECIFICATIONS.
12. EXIST. & RECONSTRUCT CURB AS SHOWN



SEE PLAN R-1852 FOR STREET IMPROVEMENTS

CITY OF RIVERSIDE
 PUBLIC WORKS DEPARTMENT

INDIANA AVENUE
 WIDENING & ALLEY
 CONSTRUCTION

FROM 100' EAST OF ALLEY TO 235' EAST OF ALLEY

R-1707

DATE 3-19-14

HORIZ. SCALE 1" = 20' VERT. SCALE 1" = 2'

SHEET 1 OF 1

FILE NO.