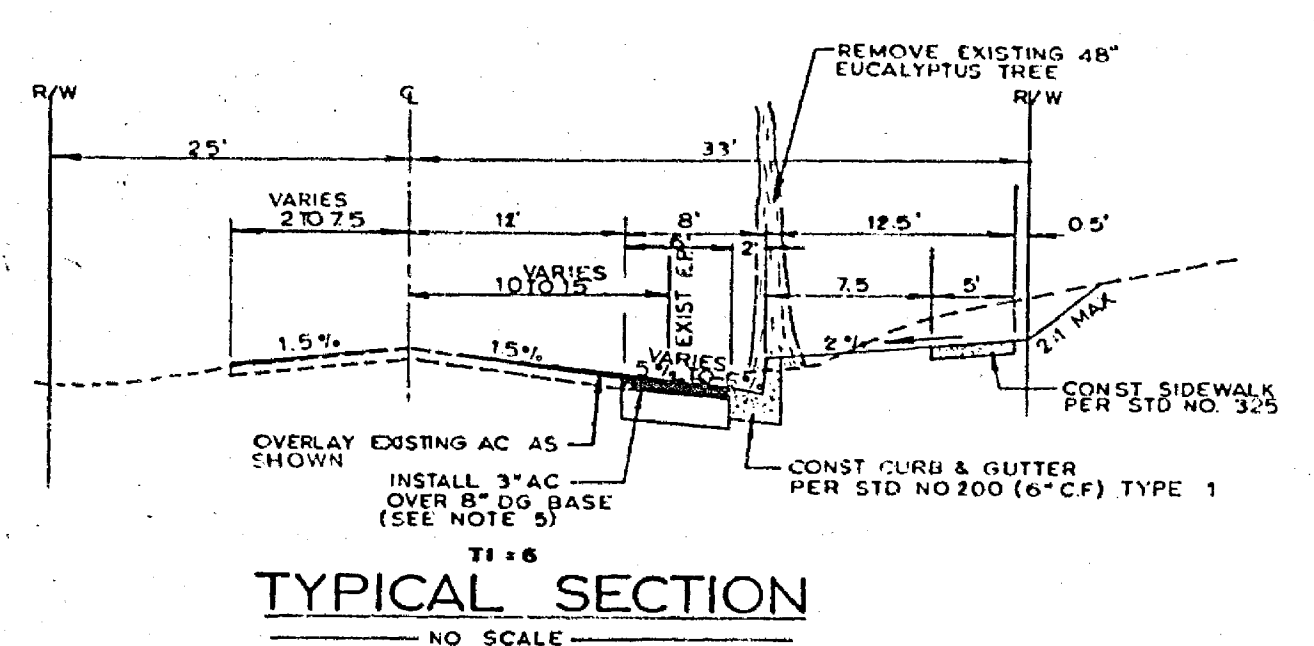
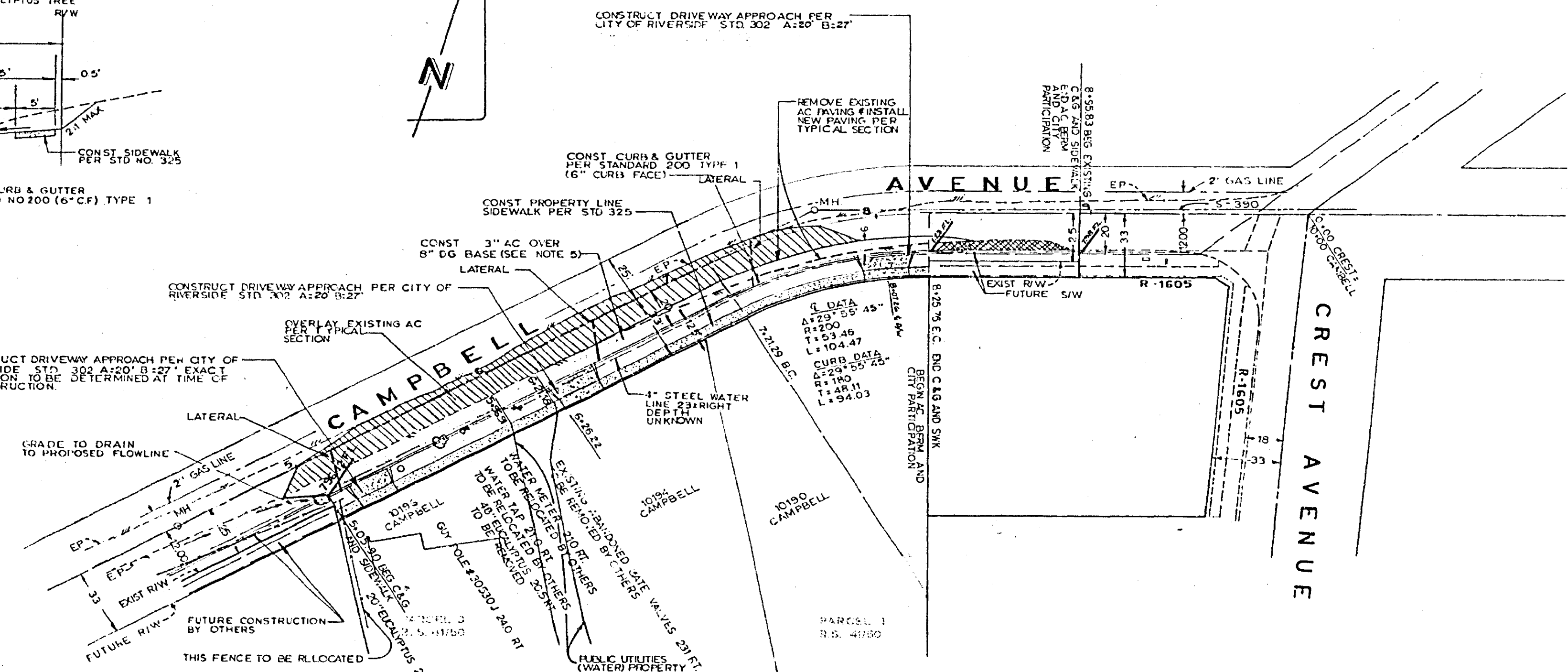


**BENCH MARK:**  
 No. 02-F PK NAILY TAG IN CENTER OF NW CURB RETURN OF TYLER ST AND CAMPBELL AVE.  
 ELEVATION 780.144



**TYPICAL SECTION**  
 NO SCALE



- GENERAL NOTES**
- (1) IT SHALL BE THE RESPONSIBILITY OF THE CONTRACTOR TO CLEAR THE RIGHT OF WAY IN ACCORDANCE WITH THE PROVISIONS OF THE LAW AS IT AFFECTS EACH UTILITY, INCLUDING IRRIGATION LINES AND APPURTENANCES AND AT NO COST TO THE CITY.
  - (2) CONSTRUCTION SHALL BE IN ACCORDANCE WITH STANDARD SPECIFICATIONS FOR PUBLIC WORKS CONSTRUCTION, 1973 EDITION AND CITY OF RIVERSIDE STANDARD DRAWINGS.
  - (3) THE EXISTENCE AND LOCATION OF ANY UNDERGROUND UTILITY FACILITIES SHOWN ON THIS PLAN WERE OBTAINED BY A SEARCH OF AVAILABLE RECORDS TO THE BEST OF OUR KNOWLEDGE. THERE ARE NO KNOWN UTILITIES EXCEPT AS SHOWN ON THIS PLAN. THE CONTRACTOR IS REQUIRED TO TAKE DUE PRECAUTIONARY MEASURES TO PROTECT THE UTILITY LINES SHOWN AND OTHER LINES NOT OF RECORD OR NOT SHOWN.
  - (4) WHERE NEW PAVING JOINS EXISTING AC TRIM EXIST PAVEMENT TO A CLEAN STRAIGHT LINE. CONTRACTOR MATCH UP PAVES AND OVERLAY WHERE SHOWN TO PRODUCE A SMOOTH CROWN SECTION.
  - (5) IN LIEU OF INSTALLING 3" AC OVER 8" DG BASE, CONTRACTOR MAY INSTALL 7" AC OVER CONTRACTED NATIVE MATERIAL.
  - (6) CURB AND GUTTER WILL BE STAKED AT 25' INTERVALS WITH 3' OFF SETS.

**NOTE:**  
 CONTRACTOR SHALL CONTACT THE CITY OF RIVERSIDE PUBLIC WORKS DEPT. 2 WEEKS PRIOR TO STARTING WORK TO NEGOTIATE THE CITY'S PORTION OF THE PAVING, AC BERM, CURB, GUTTER AND SIDEWALK. Hatched area denotes area to be paved by the city.

**APPROVED**  
 JERRY M IRBY  
 LAND SURVEYOR  
 4360 E. FLORENCE  
 BELL CALIF. 90008  
 PH (213) 385-7828  
 APPROVED BY: George R. Ramsdell  
 GEORGE R. RAMSDELL  
 RCE 17821  
 FOR: SMITH-FREUDENBERG

MARK	REVISIONS	APPR.	DATE

**CITY OF RIVERSIDE, CALIFORNIA**  
**DEPARTMENT OF PUBLIC WORKS**  
 APPROVED BY: [Signature]  
 OFFICE ENGINEER  
 PARK DEPARTMENT  
 TRAFFIC DIVISION  
 ASSISTANT CITY ENG.  
 DATE: 9-23-75

**STREET PLAN & PROFILE**  
**CAMPBELL AVENUE**  
 FROM 175' TO 495' WEST OF CREST AVENUE  
 BUILDING PERMITS AT 10190, 10194 AND 10196 CAMPBELL  
 HORIZ. SCALE: 1" = 40' VERT. SCALE: 1" = 4'  
**PROJECT NO. R-1751**  
**SHEET 1 OF 1**  
 FILE NO.