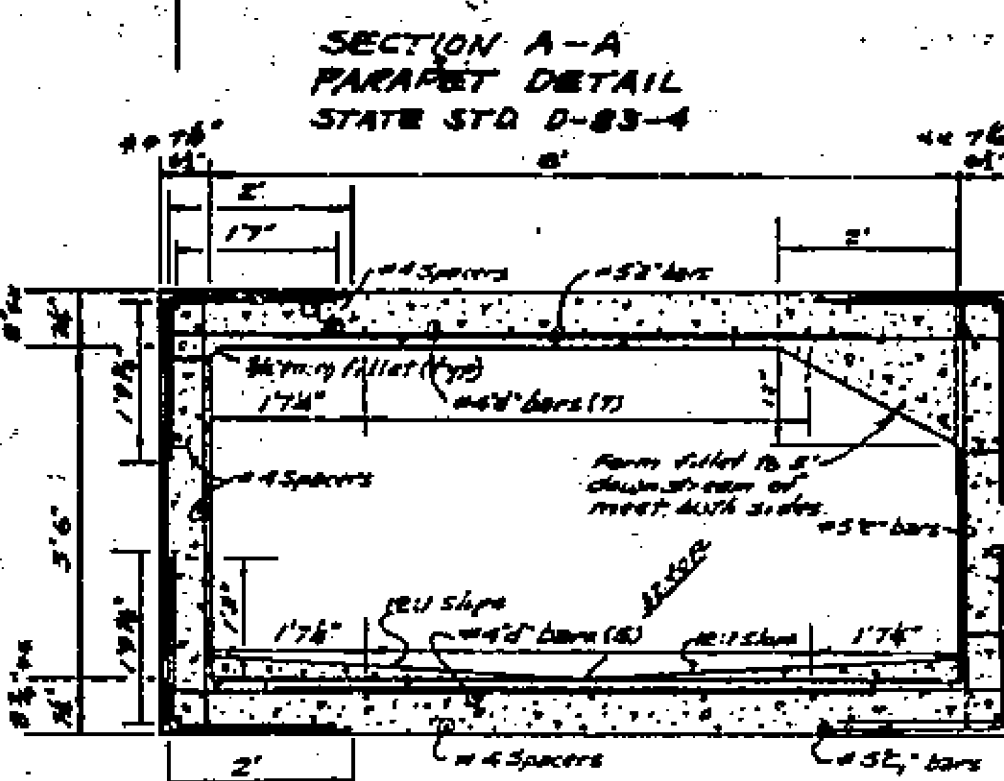
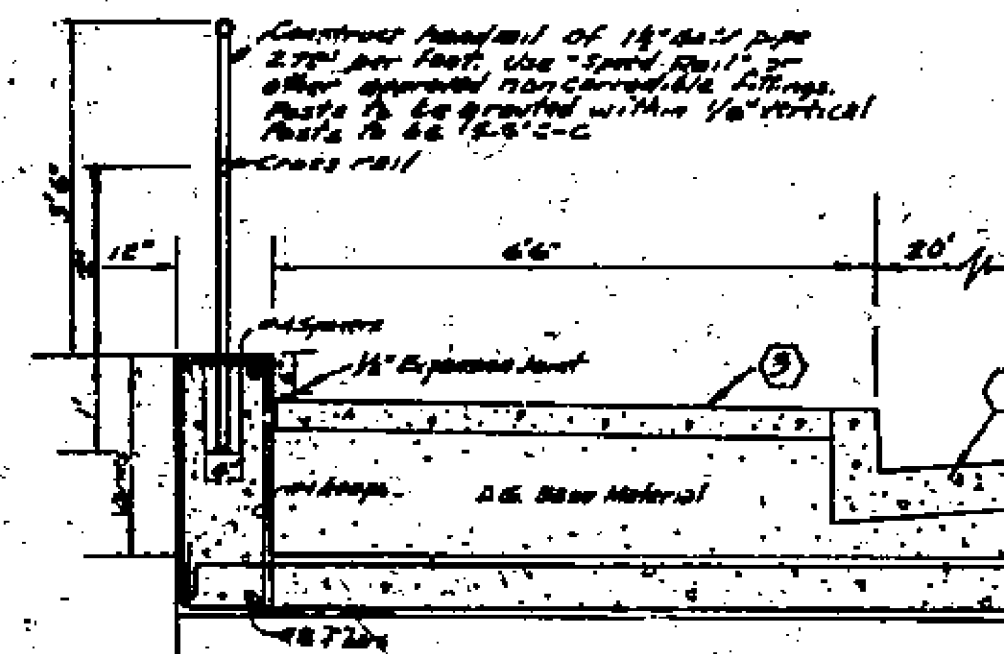


CANAL REPLACEMENT NOTES

1. The reinforced concrete boxes per State of California Standards No D-80-2 and D-83-4
2. Contact The City of Riverside, Public Utilities Dept. Irrigation Division, 2 weeks prior to working on any Canal Facilities, 721 787-7441
3. Relocation of the irrigation pipe, inlet and weir shall be completed before beginning work on the replacement box.
4. The Canal may be bridged for only three days at a time unless prior approval for a longer time is obtained from R.I.D. unless otherwise indicated. If R.I.D. Main Division, the contractor shall provide provisions for allowing canal water to flow through the work area. These provisions are to be approved by the Water Division prior to removing the Canal from service.
5. Transition proposed box to meet existing floor section of the existing structure in 6' from the junction.
6. Reinforcing steel and concrete thicknesses shall be for a 12" span per Standard D-80-2 from the junction with the existing structure to 6' downstream. Transition steel placement from parallel with the existing parapet to transverse to the box 6' in the 3rd box 6'.



REINFORCED BOX CULVERT
CANAL REPLACEMENT
STATE STD D-80-2, 3.5'x3'x4'x42"
1" INVERT
SCALE 1"=2'
BY CITY OF RIVERSIDE

NO.	SIZE	SPACING	LENGTH	REMARKS
1	#5	12"	11'	
2	#5	12"	11'	
3	#5	12"	11'	
4	#5	12"	11'	
5	#5	12"	11'	
6	#5	12"	11'	
7	#5	12"	11'	
8	#5	12"	11'	
9	#5	12"	11'	
10	#5	12"	11'	
11	#5	12"	11'	
12	#5	12"	11'	
13	#5	12"	11'	
14	#5	12"	11'	
15	#5	12"	11'	
16	#5	12"	11'	
17	#5	12"	11'	
18	#5	12"	11'	
19	#5	12"	11'	
20	#5	12"	11'	

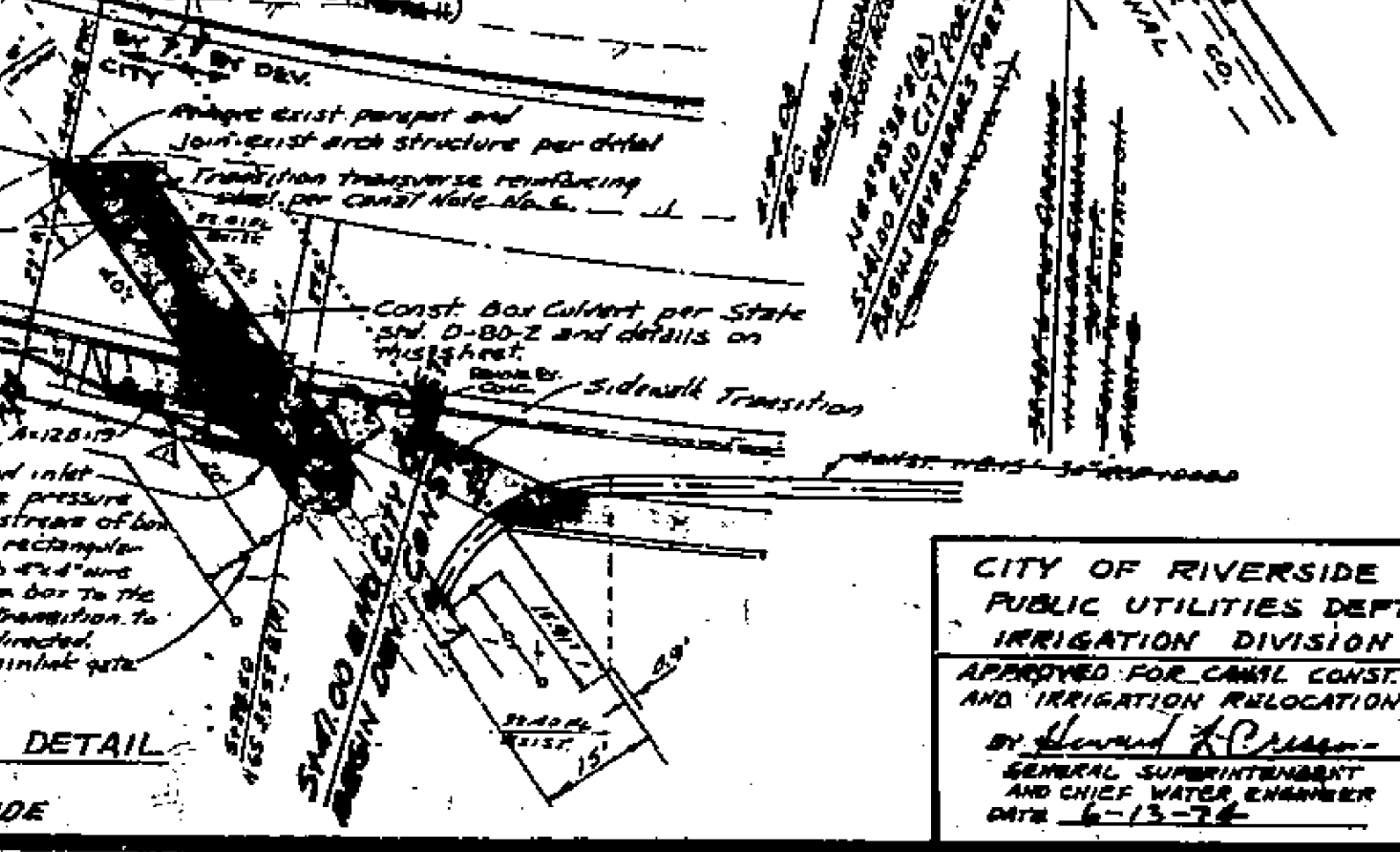
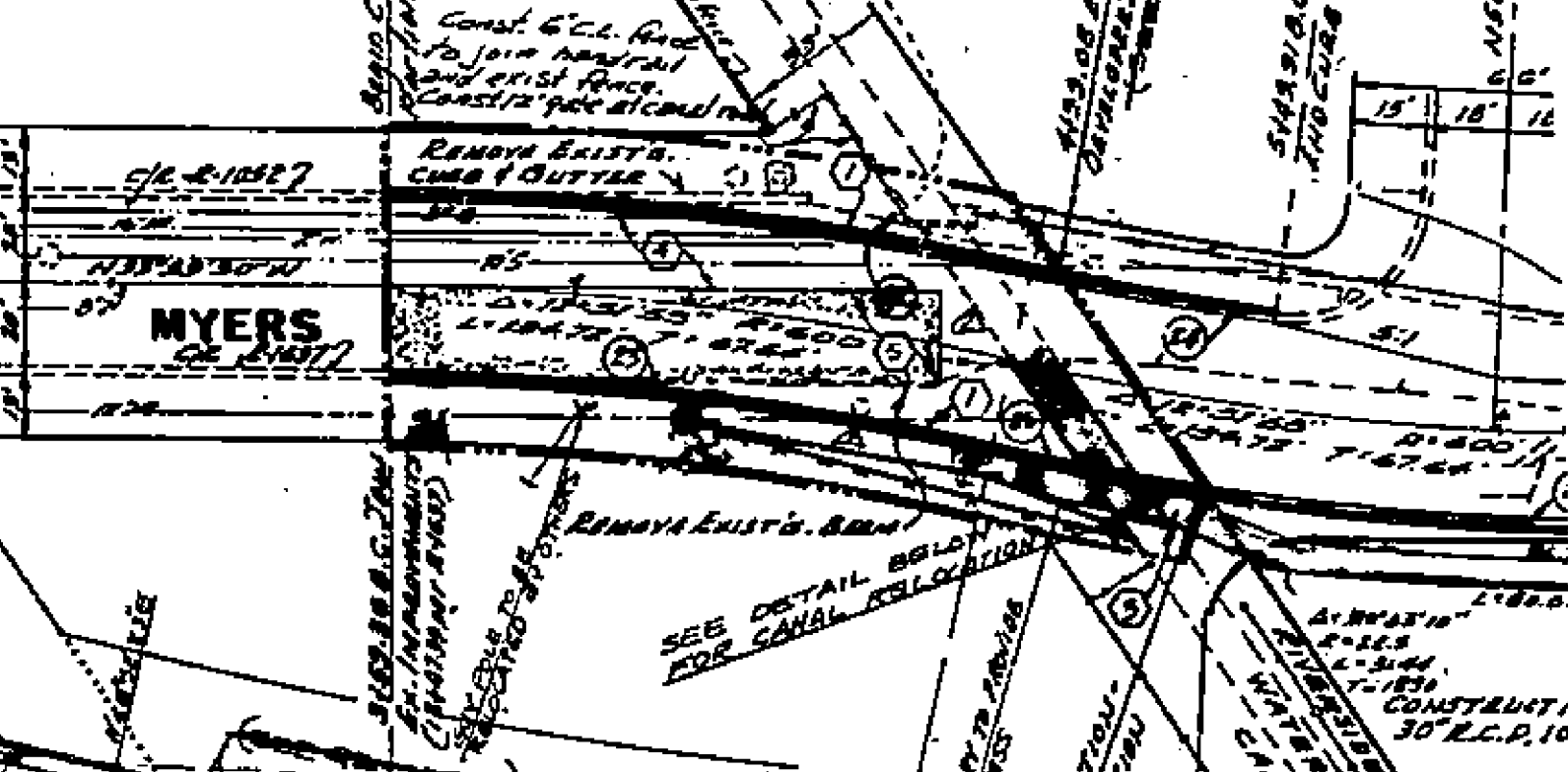
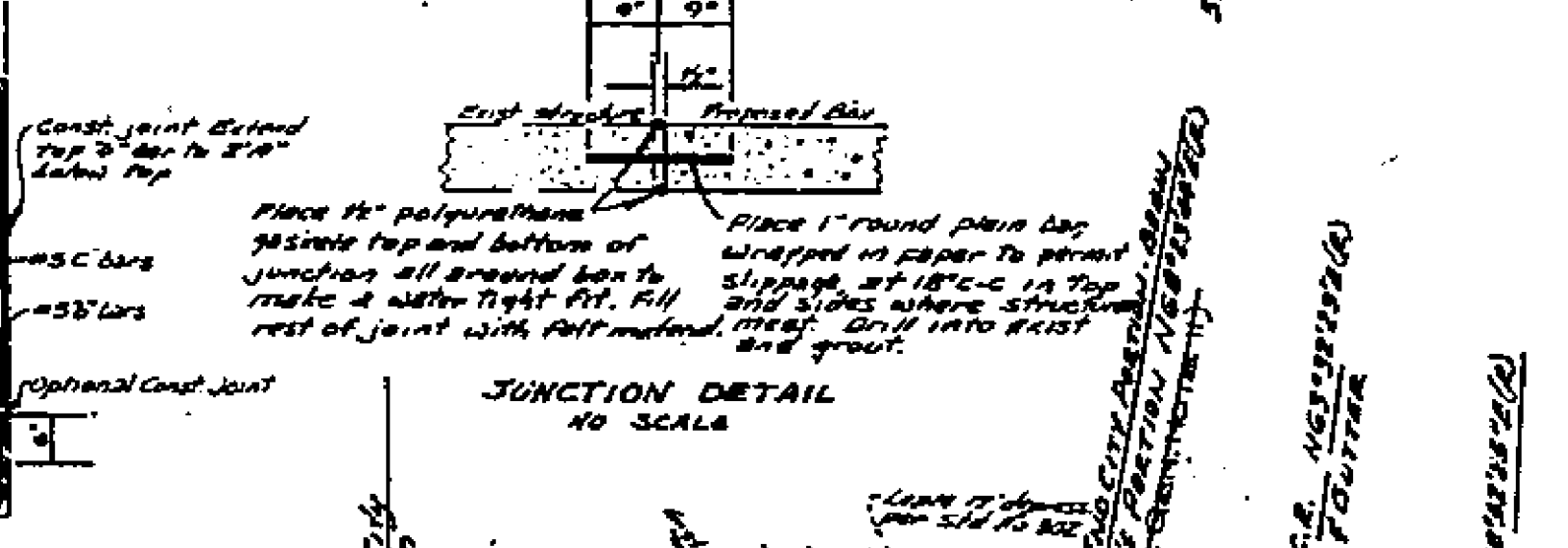
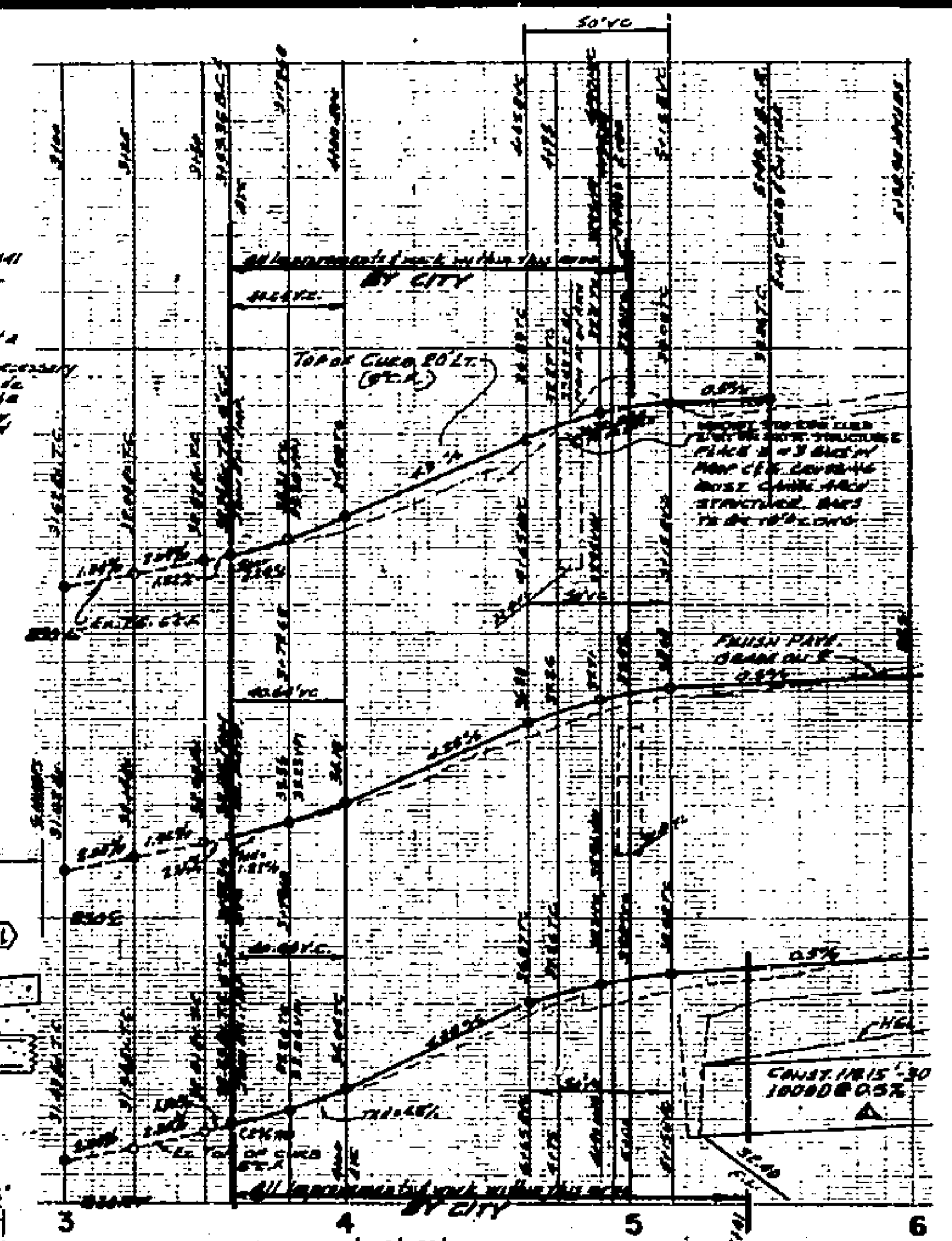
PARAPET REINFORCING STEEL #

SCALE 1"=2'

BY CITY OF RIVERSIDE

SCALE 1"=20'

BY CITY OF RIVERSIDE

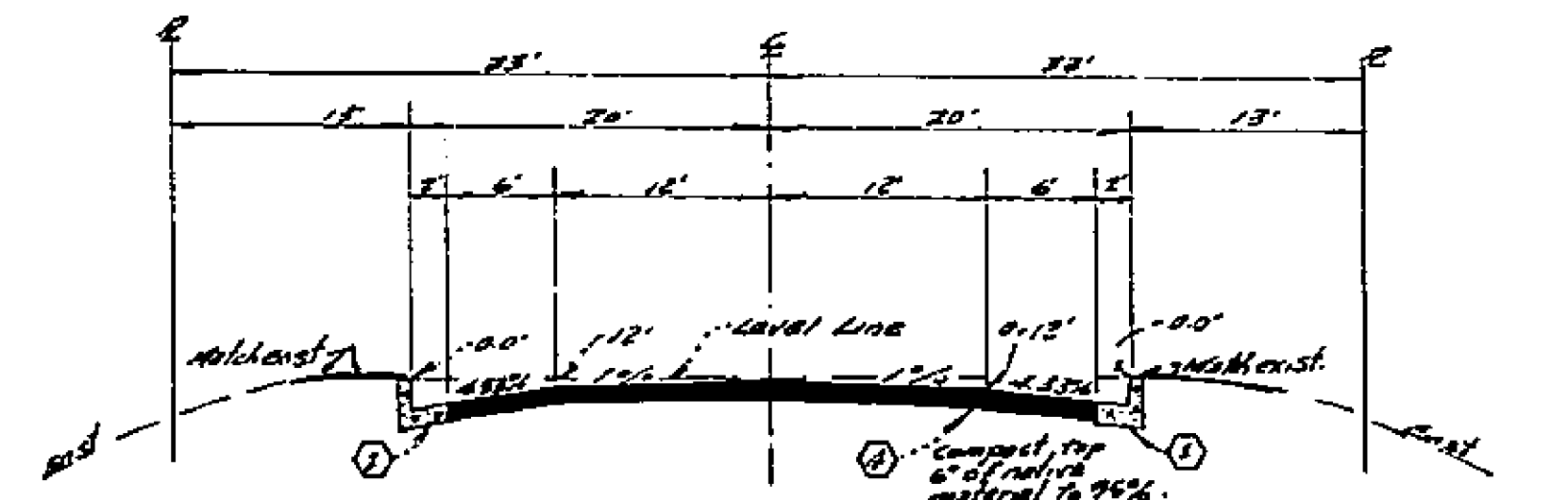


GENERAL NOTES

1. Construction shall be in accordance with the standard specifications for Public Works construction 1973 edition and city of Riverside standard drawings.
2. All flagged elevations shall be staked in the field by the Engineer.
3. It shall be the responsibility of the contractor to clear the right of way in accordance with the provisions of law as it affects each utility including irrigation lines and appurtenances and at no cost to the City.

CONSTRUCTION NOTES

1. Construct City of Riverside Standard 200 Curb and gutter (62)
2. Construct City of Riverside Standard 325 sidewalk.
3. Remove existing paving and replace with 4" AC over compacted native material.
4. Place suitable thickness AC overlay to plan grades over exist 4" thick paving. Area of overlay shown by [Symbol]



CURB CURVE DATA

NO.	Δ	R	L	T
22	12°51'53"	62000	139.21	69.90
23	12°51'53"	58000	130.25	65.39
24	5°59'54"	58000	58.97	26.50
25	4°26'50"	62000	48.46	24.25

BENCH MARK
City of Riverside A.M. 2-4-3, being a brass disk in a capped well at the intersection of Van Buren Blvd. and Victoria Ave. Elev. 881.260

CITY OF RIVERSIDE PUBLIC UTILITIES DEPT. IRRIGATION DIVISION APPROVED FOR CANAL CONST. AND IRRIGATION ALLOCATION APPROVED BY [Signature] DATE 2/16/74 R.I. No. 9876 72-73-186 FOR ESTIMATING/BIDDING FEB 1974	ALBERT A. WEBB ASSOCIATES CIVIL ENGINEERS RIVERSIDE, CALIFORNIA APPROVED BY [Signature] DATE 2/16/74 R.I. No. 9876	CITY OF RIVERSIDE, CALIFORNIA PUBLIC WORKS DEPARTMENT APPROVED BY [Signature] DATE 11-8-74 DATE 11-8-74	STREET PLAN AND PROFILE TRACT NO. 5513 MYERS STREET CITY PARTICIPATION		ACCOUNT NO. 30-575-351 DRAWING NUMBER R-1763-A SHEET 1 OF 1 73-186-A
			SCALE: HORIZ. 1"=40' VERT. 1"=4' ADAPTED FROM PLAN R-1763		