

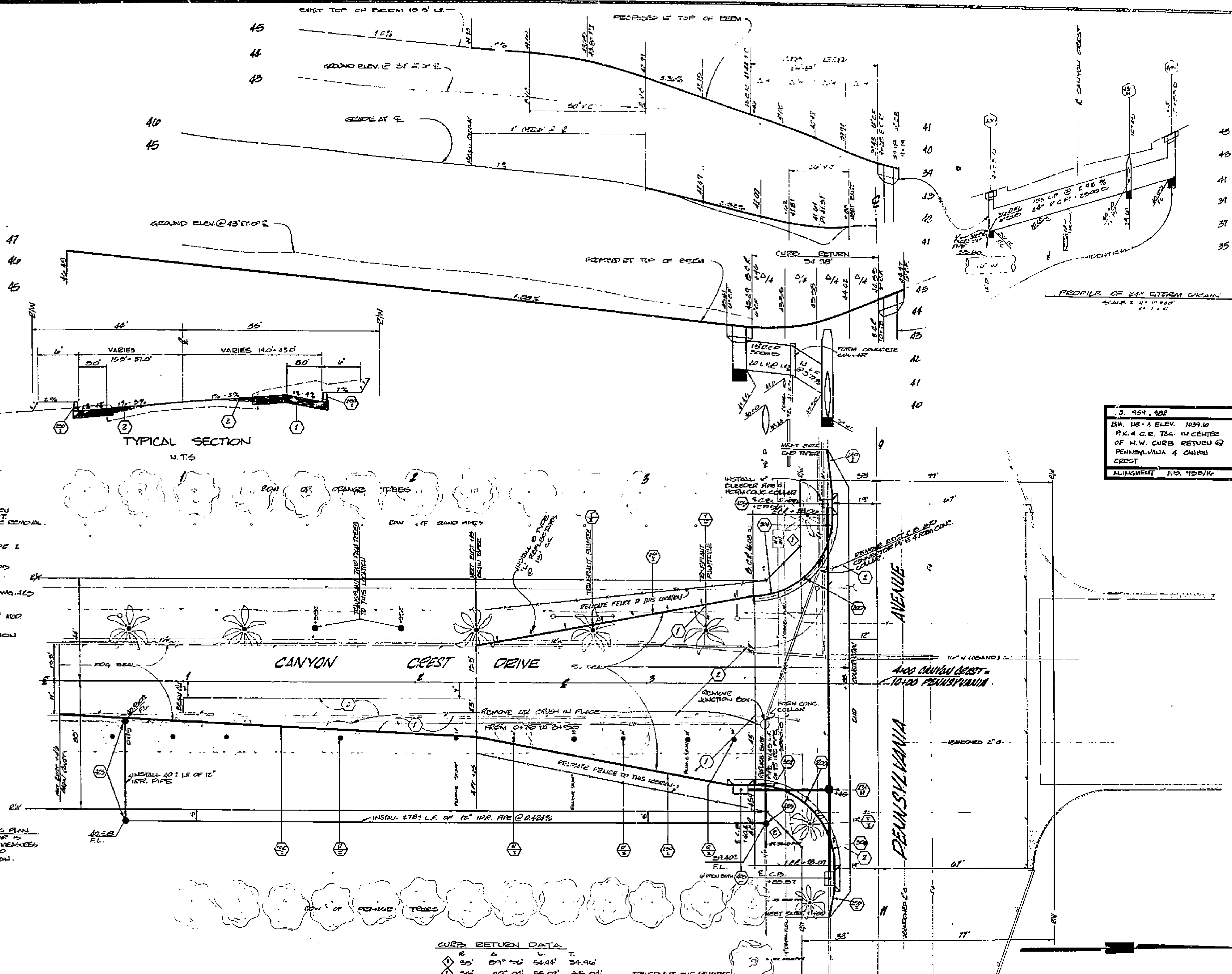
**CONSTRUCTION NOTES**

- THIS PLAN IS FOR STREET CONSTRUCTION ONLY. STREET LIGHTS AND TRAFFIC SIGNALS SHALL BE CONSTRUCTED FROM ATTACHED SUBJECT PLANS.
- CONSTRUCTION TO BE IN ACCORDANCE WITH STANDARD SPECIFICATION FOR STATE OF CALIF., JAN., 1975 EDITION & CITY OF RIVERSIDE, STD. DWG. 200.
- THE CONTRACTOR SHALL BE RESPONSIBLE TO DEFINE OR DEFINE IN KIND AT HIS OWN EXPENSE ANY INSTRUMENTS DAMAGED BY HIS OPERATIONS DURING CONSTRUCTION.
- WHERE NEW CONSTRUCTION IS INDICATED:
  - CLEAR AND REVEAL.
  - REMOVE EXIST. BEDM.
  - REMOVE ALL EXIST. I.C. PAVEMENT EXCEPT WHERE DESIGN OF EXIST. PAVEMENT IS SHOWN IN PLAN.
  - REMOVE ADJACENT STREET LIGHT BUMPS AND CONDUIT.
  - REMOVE DRESS AND STAMPS IN AREA OF CONSTRUCTION AND ELSEWHERE AS SHOWN IN THE PLAN.
- TRAFFIC SIGNALS REMOVED DURING CONSTRUCTION SHALL BE SAVED BY THE CONTRACTOR AND RELOCATED AS DIRECTED BY THE INSPECTOR.
- TRANSITION NEW CONSTRUCTION TO MEET EXISTING PROFILES AS DIRECTED BY THE INSPECTOR.
- ADJUST TO EXISTING AND STORM DRAIN MANHOLES TO FINISHED GRADE.
- ALL DIMENSIONS SHOWN ON THE PLAN SHALL BE STAKED IN THE FIELD.
- RELOCATE EXIST. FENCE WHERE REQUIRED ON PLAN.

**CONSTRUCTION LEGEND**

- (100) CONST. CURB & GUTTER PER STD. DWG. 200, 4" C.F.
- (1) CONSTRUCT STRUCTURAL SECTION OF 12" I.C. OVER NATIVE SOIL.
- (2) OPEN EXISTING I.C. PAVEMENT WITH 1" THICKNESS OF I.C.
- (3) REMOVE ENTIRE TREES, CLASS IS SHOWN ON PLAN. CLASS I 4" TO 16" DIA. CLASS II OVER 16" TO 36" DIA. CLASS III OVER 36" DIA.
- (4) TRANSFER FROM TREE TO LOCATION INDICATED ON PLAN OR WHERE DIRECTED BY FIELD. DEPTH SIZE CLASSES ARE THE SAME AS FOR TREE REMOVAL.
- (5) CONSTRUCT I.C. BEDM PER STD. DWG. 250, TYPE I.
- (6) CONSTRUCT CATCH BASIN PER STD. DWG. 400. SIZE OPENING AS SHOWN ON PLAN.
- (7) CONSTRUCT CLEAN OUT BOX PER STD. DWG. 465.
- (8) CONSTRUCT MANHOLE PER STD. DWG. 451 100.
- (9) CONSTRUCT WHEELCHAIR RAMP DEPRESSION PER STD. DWG. 304.

THE LOCATIONS AND DEPTHS SHOWN ON THIS PLAN ARE FROM UTILITY RECORDS. THE CONTRACTOR IS REQUIRED TO TAKE DUE PRECAUTIONS TO LOCATE AND PROTECT ALL UNDERGROUND FACILITIES WHETHER OR NOT SHOWN ON PLAN.



TYPICAL SECTION N.T.S.

S. 454.882  
 B.M. 105-A ELEV. 1039.10  
 P.K. 4 C.R. 784. IN CENTER  
 OF N.W. CURB RETURN @  
 PENNSYLVANIA & CANYON  
 CREST  
 ALIGNMENT E.D. 9/25/74

**CURB RETURN DATA**

R	A	L	T
55'	29° 56'	54.44'	34.96'
36'	40° 04'	55.02'	35.04'

TRANSFER CURB FINISH TO THIS LOCATION.

SEE PLAN X-425 FOR TRAFFIC SIGNAL WORK

<b>CITY OF RIVERSIDE</b> PUBLIC WORKS DEPARTMENT		<b>PENNSYLVANIA AVE. AT</b> <b>CANYON CREST DR.</b> <b>TRAFFIC SIGNALS</b> widening of canyon crest dr.		SHEET 1 OF 1 R-1765
DESIGNED BY: [Signature] DRAWN BY: [Signature] CHECKED BY: [Signature]	APPROVED BY: [Signature] PLANNING ENGINEER TRAFFIC DIVISION CHIEF ENGINEER	APPROVED BY: [Signature] PUBLIC WORKS DIRECTOR	DATE: 5-1-75	FILE NO.