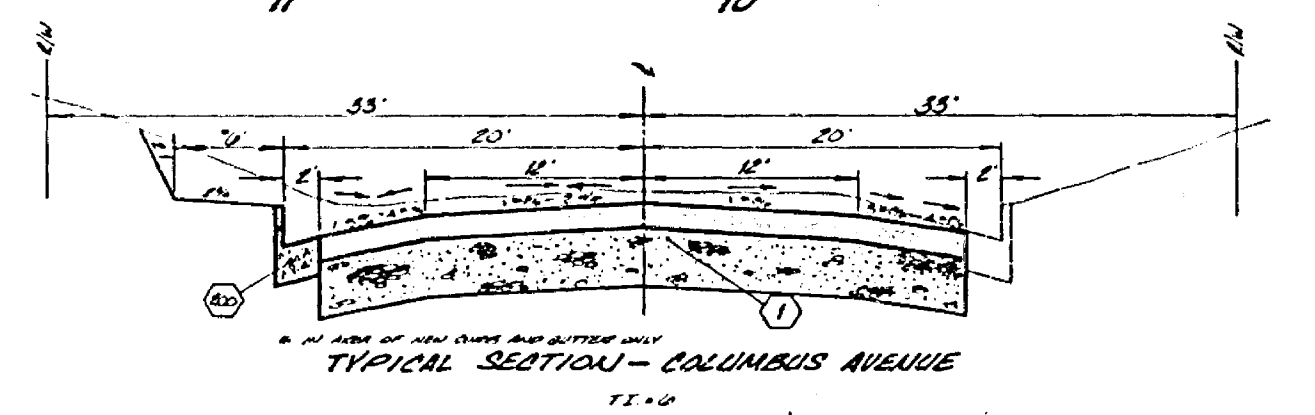
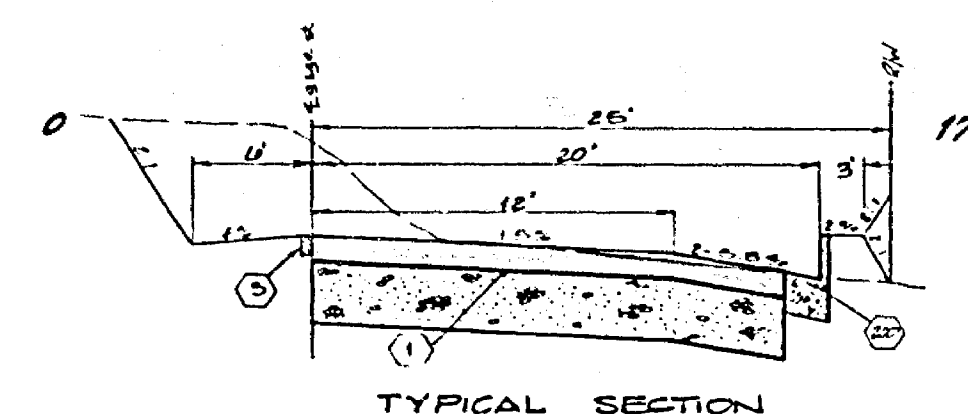
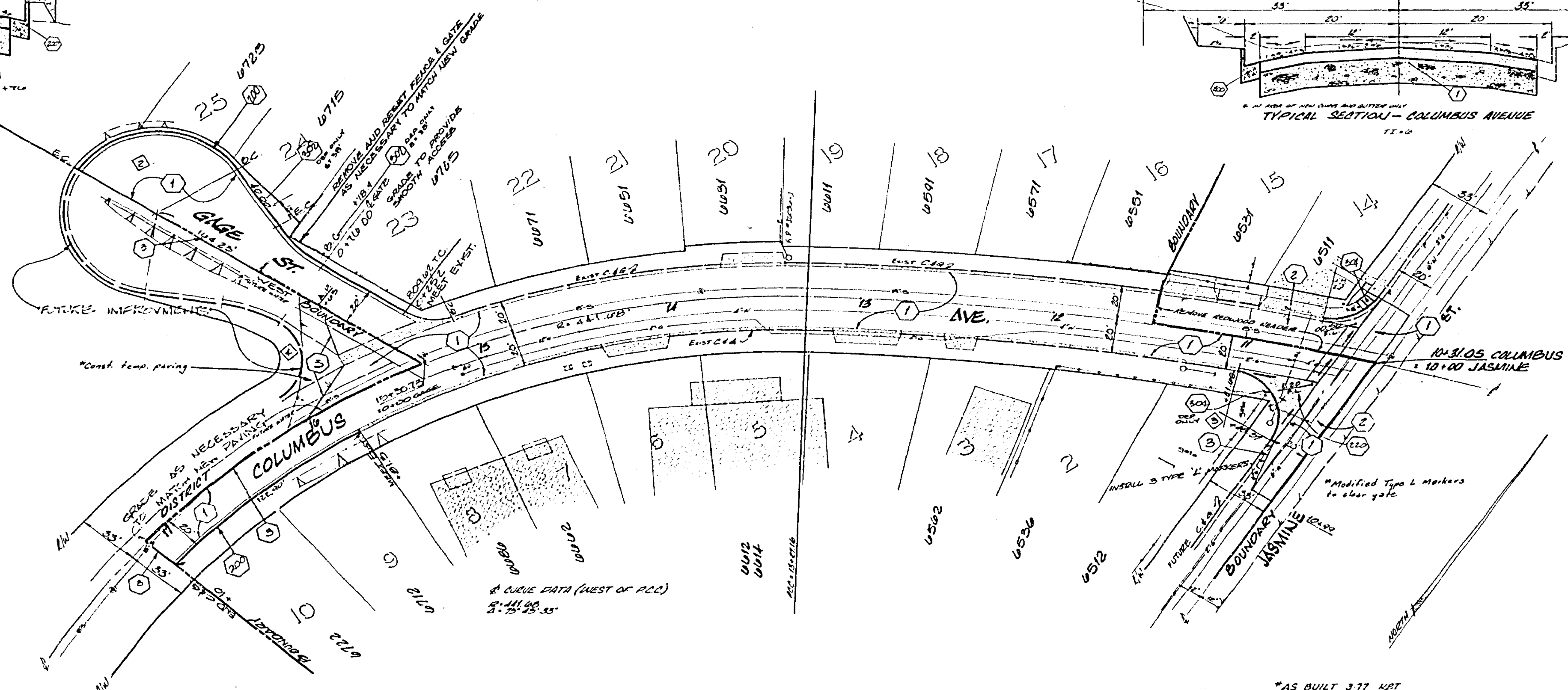


**GENERAL NOTES**

1. CONSTRUCTION TO BE IN ACCORDANCE WITH STANDARD SPECIFICATIONS FOR PUBLIC WORKS CONSTRUCTION, 1915 EDITION AND CITY OF RIVERSIDE STANDARD DETAILS.
2. THE CONTRACTOR SHALL BE RESPONSIBLE TO REPAIR OR REPLACE IN KIND AT HIS OWN EXPENSE ANY IMPROVEMENTS DAMAGED BY HIS OPERATIONS DURING CONSTRUCTION.
3. TRAFFIC SIGNS REMOVED DURING CONSTRUCTION SHALL BE SAVED BY THE CONTRACTOR AND RELOCATED AS DIRECTED BY THE INSPECTOR.
4. ALL SLOPES TO BE 2:1. SLOPES LESS THAN 2:1 HIGH ARE NOT NECESSARILY SHOWN ON THE PLAN.
5. TRANSITION NEW CONSTRUCTION TO MEET EXISTING FACILITIES AS DIRECTED BY THE INSPECTOR.
6. ADJUST ALL SERVICE MANHOLES TO FINISHED GRADE.



- ② CROSS GUTTER PER STD. DWS. 520
- ③ CONST. WHEELCHAIR RAMP PER STD. DWS. 504
- ④ CURB AND BUTTER PER STD. 200, TYPE I, 6" C.R.
- ⑤ DRIVEWAY APPROACH PER STD. 308, (SEE PLAN), LOCATION BY OWNER.
- ⑥ CONST. STRUCTURAL SECTION OF 0.85' A.C. OVER 0.85' D.A. BASE MATERIAL.
- ⑦ EXIST. A.C. TO BE REMOVED PRIOR TO CONST. OF STRUCTURAL SECTION.
- ⑧ CONST. 2" x 4" REDWOOD HEADER.



INDEX	R	Δ	T	L
1	70'	25° 00' 00"	14.02'	52.72'
2	48'	115° 00' 00"	75.54'	40.54'
3	27'	112° 55' 04"	40.46'	55.04'
4	27'	112° 55' 04"	40.46'	55.04'

\*AS BUILT 377 RPT

ENCLOSURE

ACCOUNT NO. R-1775

**CITY OF RIVERSIDE**  
PUBLIC WORKS DEPARTMENT

**COLUMBUS AVENUE**  
ASSESSMENT DISTRICT  
CURB, GUTTER, AND PAVING

SHEET 1 OF 1  
FILE NO.

DATE 6-5-20