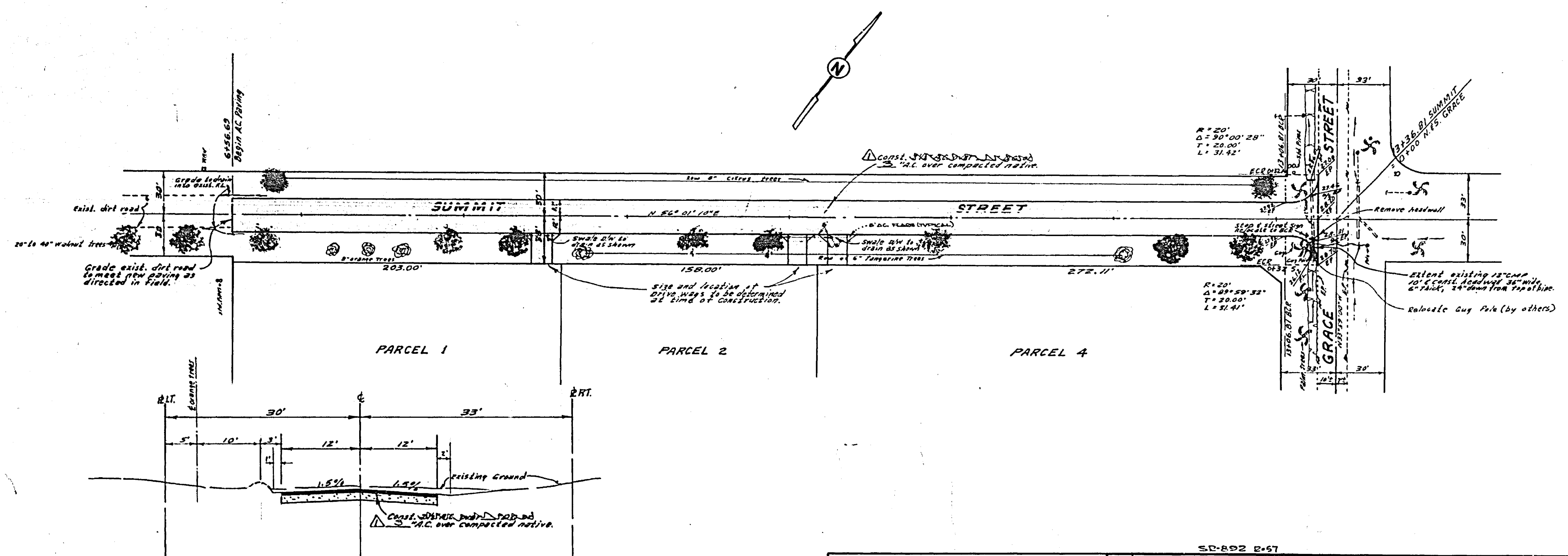


**BENCH MARK** Elev. 1083.378  
 Top of yellow painted pipe @ base of vent pipe set on south side of pump station slab on NW cor. Washington & Grace St.



**GENERAL NOTES:**

1. Construction shall be in accordance with the Standard Specifications for Public Works construction 1973 Edition and per City of Riverside Standard Drawings.
2. All flagged elevations shall be staked in the field by the Engineer.
3. The Subdivider shall arrange for a soil test to be made by a soils Engineer when the streets have been prepared to rough grade. Depth of base material and AC paving shall be determined by the City of Riverside design Standards and test procedures.
4. Overlay existing paving as directed in the field to produce smooth surface at Grace Street.
5. Staking will be blue tops on & and E.P., set at top of subgrade on 25 foot S.D.
6. Tree limbs that are lower than 15' above the street grade and that overhang the street will be trimmed by the Developer. Contact Parks Dept at 702-7418, 24 hrs. prior to removing trees or removing street trees.

**TYPICAL SECTION  
 SUMMIT STREET**  
 NO SCALE  
 V.L. & S

<b>ALBERT A. WEBB ASSOCIATES</b> CIVIL ENGINEERS RIVERSIDE, CALIFORNIA APPROVED BY: <i>E. N. Webb</i> DATE: 12/12/75 I.E. No. 2876		<b>CITY OF RIVERSIDE, CALIFORNIA</b> PUBLIC WORKS DEPARTMENT APPROVED BY: <i>James L. Smith</i> DATE: 2-10-76		ACCOUNT No. _____ DRAWING NUMBER <b>R-1858</b> SHEET <b>1</b> OF <b>1</b>
DESIGNED BY: <i>REL</i> DRAWN BY: <i>REL</i> CHECKED BY: <i>USC</i>		DATE: 2-10-76		SCALE: 1" = 40' Horiz. - 1" = 4' Vert.