

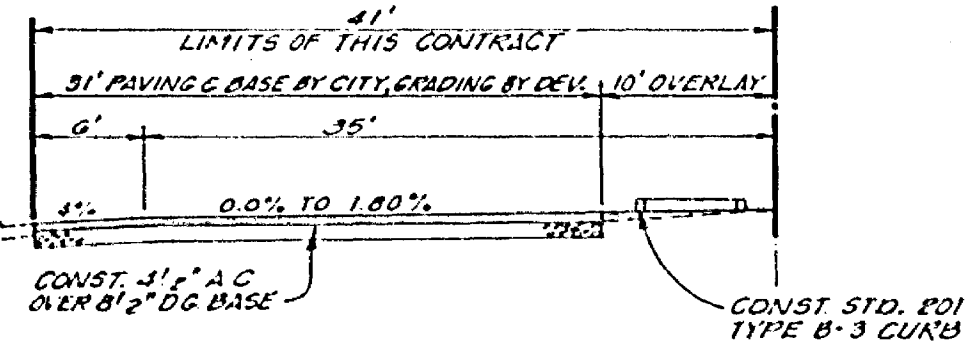
SEE SHEET NO. 5 FOR PROFILE OF FRONTAGE ROAD.

SEE SHEET 1 FOR GENERAL CONSTRUCTION NOTES.

SEE SHEET 6

- Concrete paving base by City. Shading & tie removed by Developer.
- Deposit material to cut to fit into the existing pavement.

CONSTRUCTION NOTES:
 1. CONSTRUCTION SHALL BE IN ACCORDANCE WITH THE STANDARD SPECIFICATIONS FOR PUBLIC WORKS CONSTRUCTION, 1976 EDITION, AND PER THE CITY OF RIVERSIDE STANDARD DRAWINGS.
 2. TRIM EDGE OF EXIST PAVEMENT WHERE NEW PAVEMENT JOINS TO A SMOOTH STRAIGHT LINE. CONSTRUCT MATCHUP PAVING AS SHOWN ON THE PLANS AND OVERLAY PAVING AS DIRECTED IN THE FIELD TO PRODUCE A SMOOTH SURFACE.

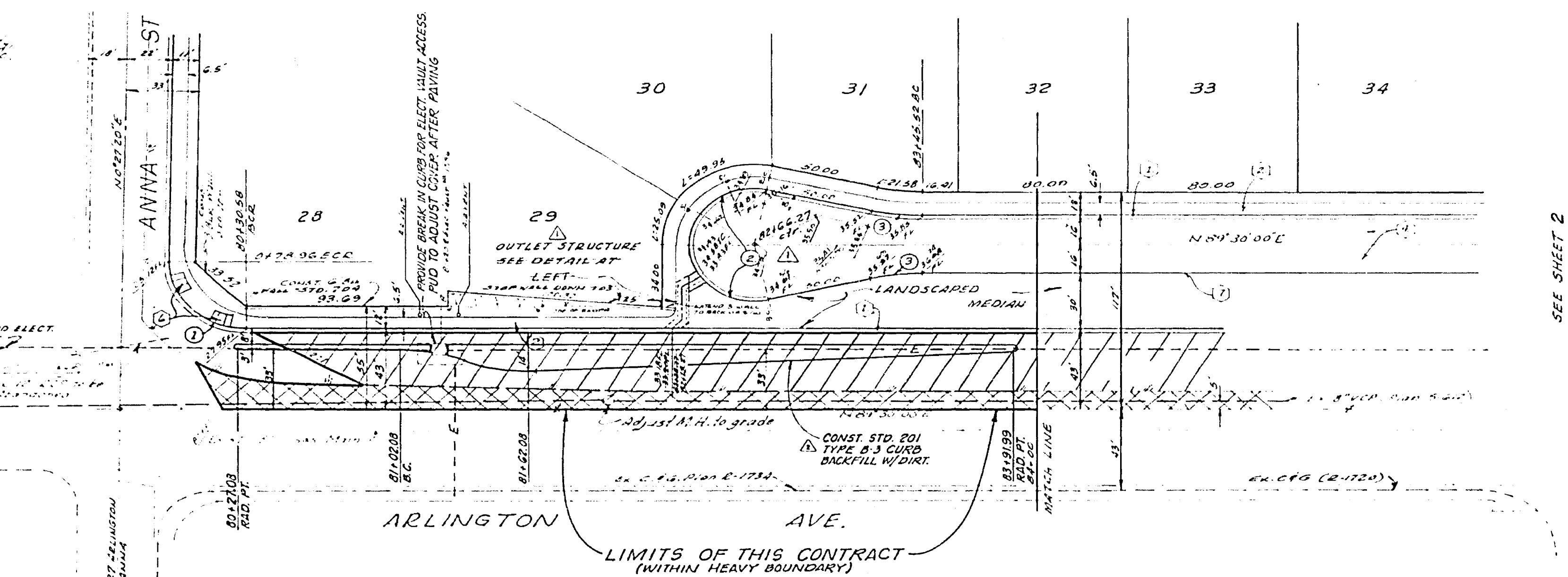


TYPICAL SECTION
NOT TO SCALE

BENCH MARK G 7-A ELEV. 969.928
 BK NAIL TAG IN EAST WING OF CATCH BASIN IN SOUTH CURB OF ARLINGTON AVE. 551 E. 257' OF E. OF VICTORIA.

CURB CURVE DATA

NO	Δ	T	L
1	90° 57' 20"	35.24	88.24
2	20° 59' 54"	3.50	10.20
3	12° 21' 52"	1.10	24.17



SEE SHEET 2

Approval for adjusting electrical layout to final paving grade
 Utilities Department
 Utilities Engineer _____ Date _____

ALBERT A. WEBB ASSOCIATES
 CIVIL ENGINEERS
 RIVERSIDE, CALIFORNIA

APPROVED BY *[Signature]* DATE 3/25/74
 R.E. No. 3876

NO.	REVISIONS	DATE
1	Added median IPT Wall	1/17/74
2	Revised utility layout	2/1/74
3	Revised utility layout	2/1/74

CITY OF RIVERSIDE, CALIFORNIA
 PUBLIC WORKS DEPARTMENT

APPROVED BY _____ BY DATE _____
 DIRECTOR OF PUBLIC WORKS

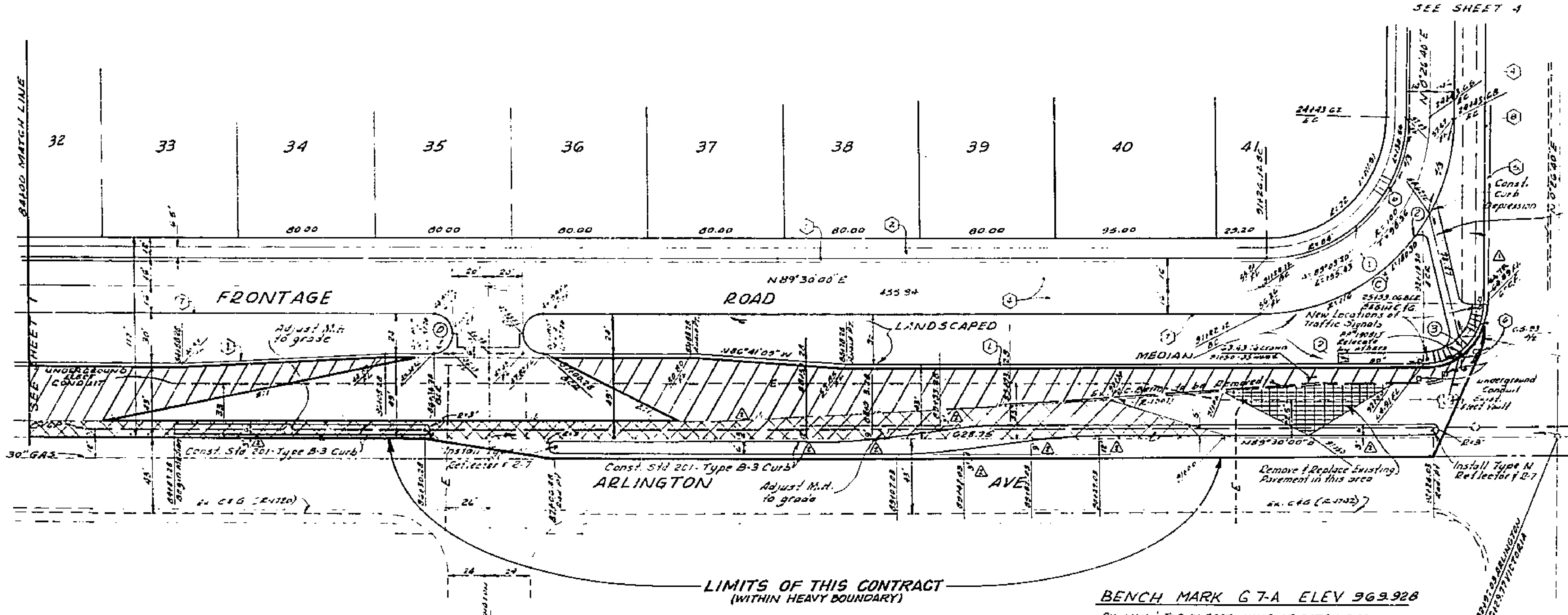
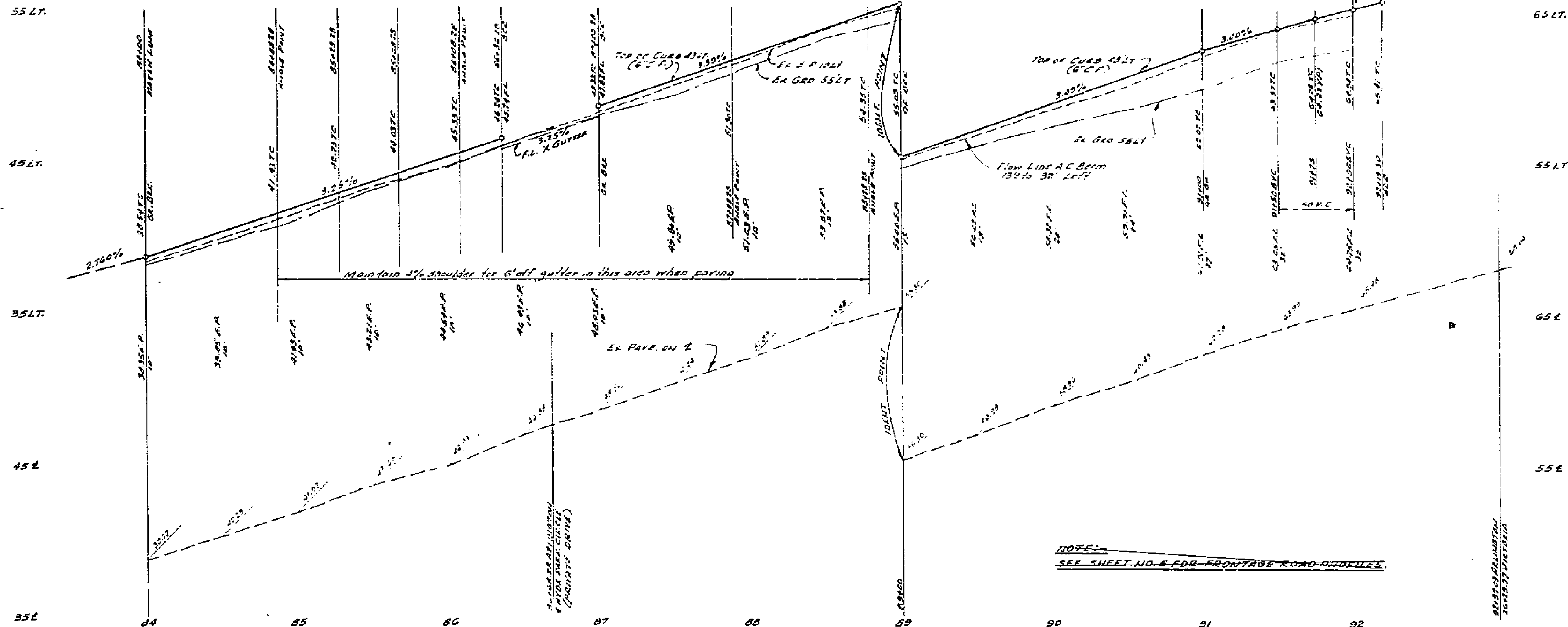
TRACT NO. 7174
 CITY PARTICIPATION

ARLINGTON AVENUE BETWEEN ANNA STREET AND VICTORIA AVENUE

SCALE: HORIZ. 1"=40' VERT. 1"=4'

ACCOUNT No. 30-575-383-07
 DRAWING NUMBER
R-1872-A
 SHEET 1 OF 2
 75-246-A

ADAPTED FROM PLAN R-1872



CURB CURVE DATA

NO.	Δ	R	T	L
1	89° 03' 25"	54'	122.23	130.54
2	89° 03' 25"	115'	114.10	180.35
3	89° 03' 25"	35'	34.42	54.45

Denotes paving & base by City, Grading & tree removal, etc. by Developer

Denotes overlay, to road to be paid by Developer prior to City doing to bid

ALBERT A. WEBB ASSOCIATES
 CIVIL ENGINEERS
 RIVERSIDE, CALIFORNIA

APPROVED BY: *[Signature]* DATE: 2/25/14
 R.E. No. 9876

DESIGNED BY: *[Signature]* DRAWN BY: *[Signature]* CHECKED BY: *[Signature]*

NO. 75-246 FOR KAUFMAN & BROAD P.B. 1076

CITY OF RIVERSIDE, CALIFORNIA
 PUBLIC WORKS DEPARTMENT

APPROVED BY: *[Signature]* DATE: 2/25/14
 TRAFFIC DIVISION

TRACT NO. 7174
 CITY PARTICIPATION

ARLINGTON AVENUE BETWEEN ANNA STREET AND VICTORIA AVENUE

SCALE: HORIZ. 1"=40' VERT. 1"=4'

ACCOUNT No. 30-575-583-07

DRAWING NUMBER: **R-1872-A**

SHEET **2** OF **2**

75-246-A

ADAPTED FROM PLAN R-1872