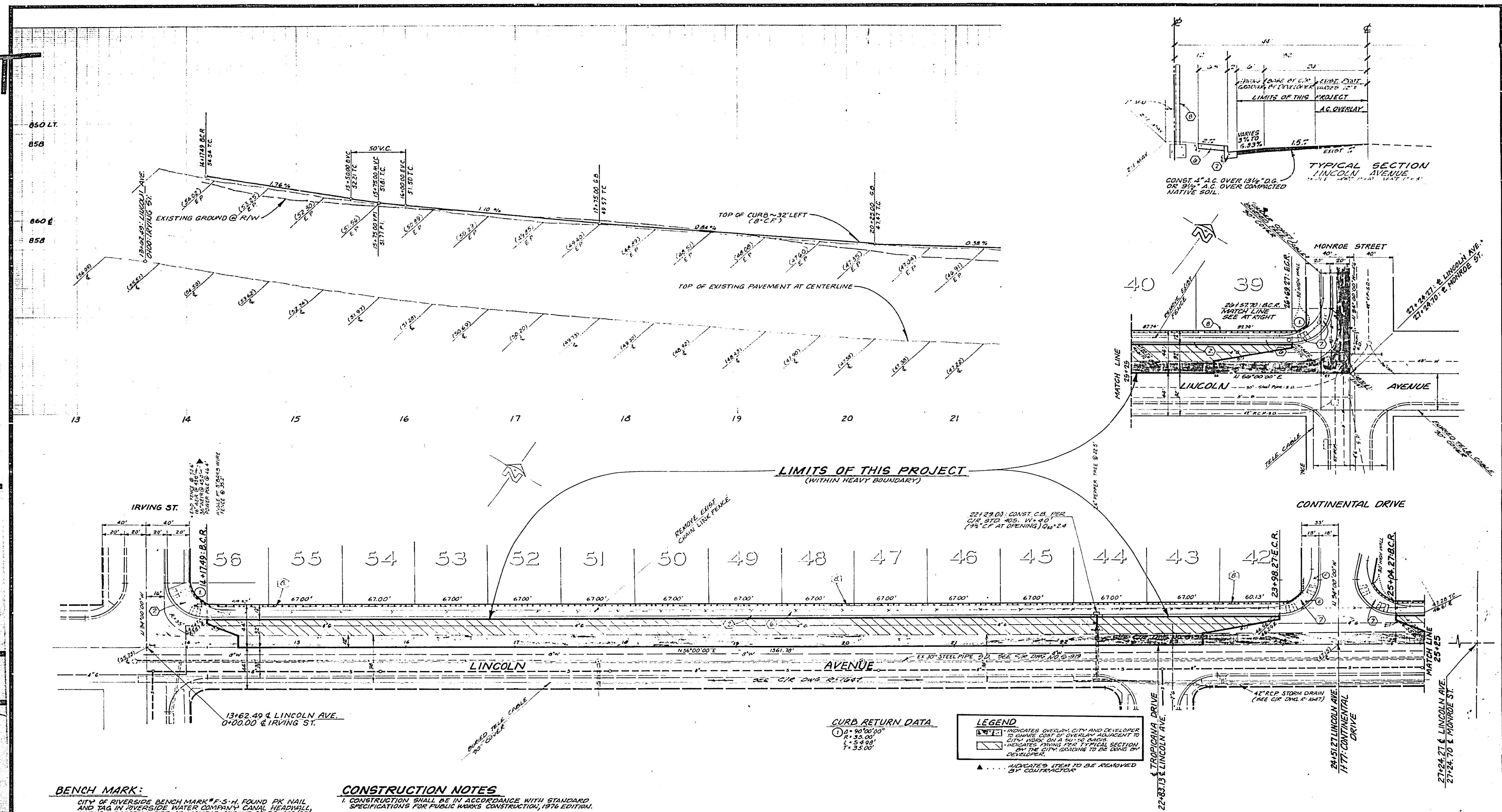


27
11
58
8.5
11
17
22



BENCH MARK:
CITY OF RIVERSIDE BENCH MARK # F-5-N FOUND PK NAIL
AND TAG IN RIVERSIDE WATER COMPANY CANAL HEADWALL,
ON THE WESTERLY SIDE OF MONROE STREET, C.R.F.B. 339/33.
ELEV. = 835.60

CONSTRUCTION NOTES
1. CONSTRUCTION SHALL BE IN ACCORDANCE WITH STANDARD
SPECIFICATIONS FOR PUBLIC WORKS CONSTRUCTION, 1976 EDITION.

CURB RETURN DATA
① R=90'00"
L=54'00"
T=35'00"

LEGEND
[Symbol] INDICATES OVERLAY CITY AND DEVELOPER
TO SHARE COST OF OVERLAY ADJACENT TO
CITY WORK ON A 50-50 BASIS.
[Symbol] INDICATES PAVING FOR TYPICAL SECTION
BY THE CITY, GRADING TO BE DONE BY
DEVELOPER.
[Symbol] INDICATES ITEM TO BE REMOVED
BY CONTRACTOR.

J. F. DAVIDSON ASSOCIATES
CIVIL ENGINEERS - SURVEYORS - PLANNERS
RIVERSIDE, CALIFORNIA
APPROVED BY: [Signature] DATE: 1/17/77
R.E. No. 17550

CITY OF RIVERSIDE, CALIFORNIA
DEPARTMENT OF PUBLIC WORKS
APPROVED BY: [Signature] DATE: 2/2/77
PRINCIPAL ENGINEER
PARK DEPARTMENT
TRAFFIC DIVISION
CHIEF P.W. ENGR.

LINCOLN AVENUE PAVEMENT
PARTICIPATION WITH TRACT 8266
IRVING STREET TO MONROE STREET
HORIZ. SCALE: 1" = 40'
VERT. SCALE: 1" = 4'

PROJECT NO. 30-513-244-07
R-1960-A
SHEET 1 OF 1
FILE NO. 55/4
ADAPTED FROM PLAN R-1960