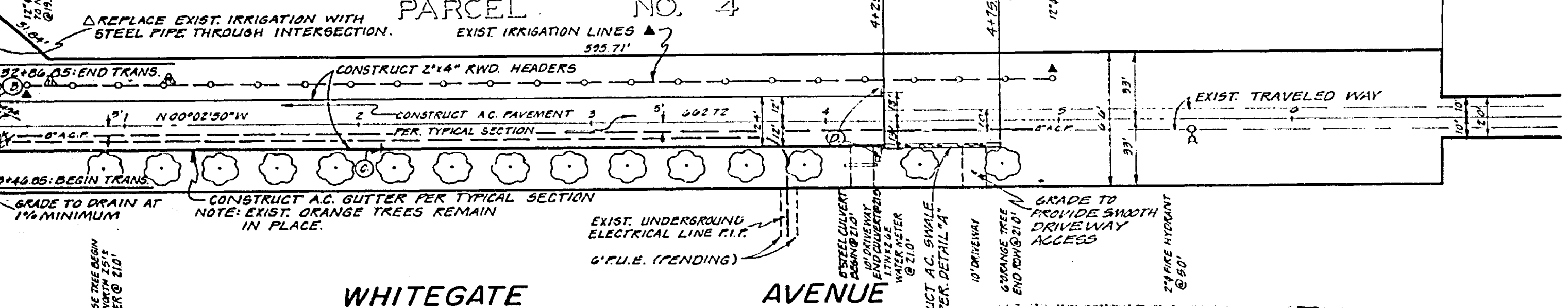
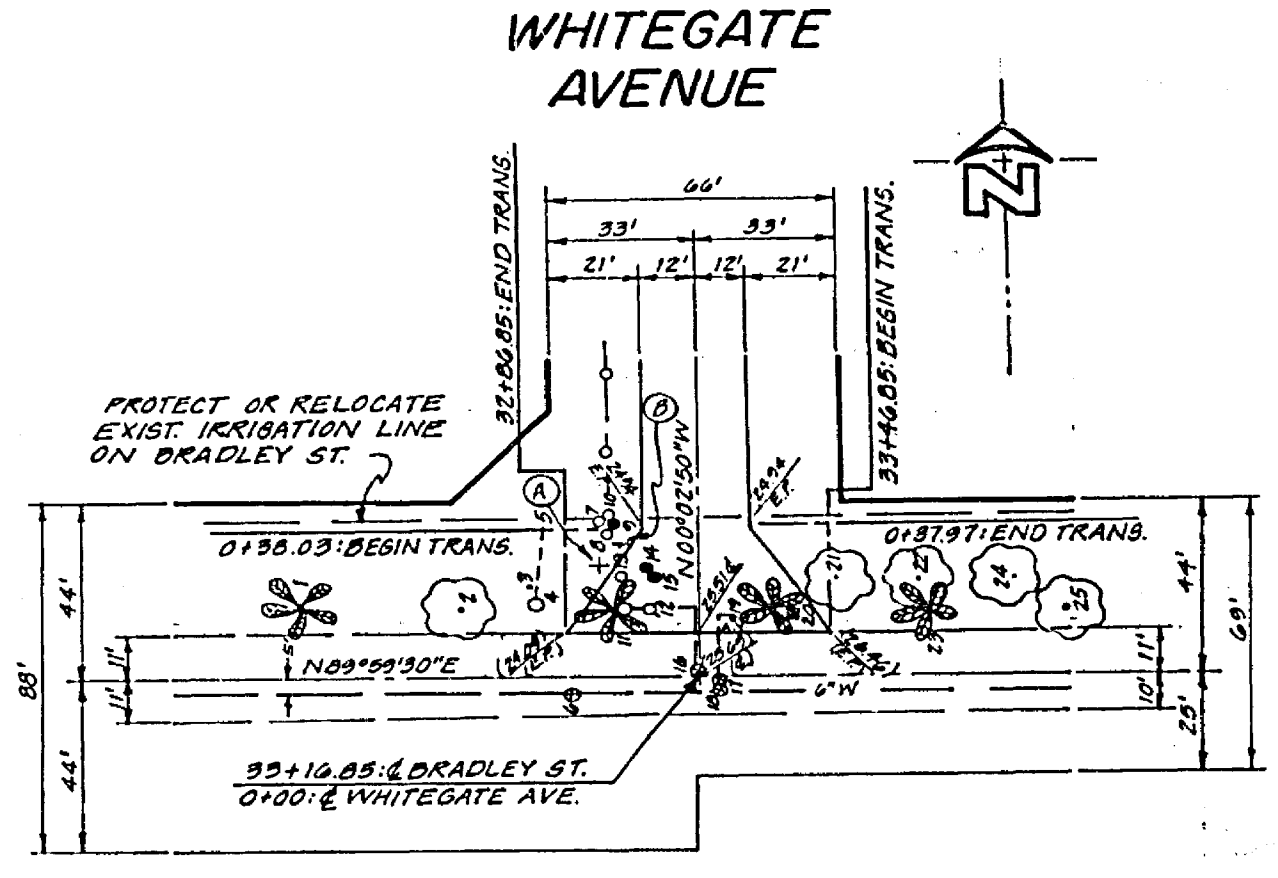


- 1. 12" PALM TREE @ 174' LT.
- 2. 10" JUNIPER TREE @ 111' LT.
- 3. 4" UNDERBOND CONDUIT @ 225' LT.
- 4. 12" WIRE RISER @ 225' LT.
- 5. 12" WIRE RISER @ 225' LT.
- 6. 12" WIRE RISER @ 225' LT.
- 7. 12" WIRE RISER @ 225' LT.
- 8. 12" WIRE RISER @ 225' LT.
- 9. 12" WIRE RISER @ 225' LT.
- 10. 12" WIRE RISER @ 225' LT.
- 11. 12" WIRE RISER @ 225' LT.
- 12. 12" WIRE RISER @ 225' LT.
- 13. 12" WIRE RISER @ 225' LT.
- 14. 12" WIRE RISER @ 225' LT.
- 15. 12" WIRE RISER @ 225' LT.
- 16. 12" WIRE RISER @ 225' LT.
- 17. 12" WIRE RISER @ 225' LT.
- 18. 12" WIRE RISER @ 225' LT.
- 19. 12" WIRE RISER @ 225' LT.
- 20. 12" WIRE RISER @ 225' LT.
- 21. 12" WIRE RISER @ 225' LT.
- 22. 12" WIRE RISER @ 225' LT.
- 23. 12" WIRE RISER @ 225' LT.
- 24. 6" ORANGE TREE @ 230' LT.
- 25. 10" JUNIPER TREE @ 174' LT.

LEGEND
 Δ INDICATES ITEMS TO BE RELOCATED OR ADJUSTED.
 * INDICATES ITEMS TO BE REMOVED.
 ○ INDICATES FINAL LOCATION OF RELOCATED ITEMS.
 NOTE: CONTACT THE GAGE CANAL CO. PH. 905-8220 PRIOR TO RELOCATION OR REMOVAL OF ITEMS.
 19-19. RELOCATE FIRE HYDRANT (ITEM 12) TO SPECIFICATION OF RIVERSIDE CITY WATER DEPT. PH. 787-1441.



STREET NAME & TRAFFIC SIGN SCHEDULE	
BRADLEY CT	1500
WHITEGATE AVE	1400
R1 (STOP SIGN) 20" OCTAGON	
W19 (PAVEMENT ENDS) 30" x 30"	
W32 (DIP) 30" x 30"	
T1 (YELLOW REFLECTOR) 24" x 24"	



- GENERAL NOTES:**
- IT SHALL BE THE RESPONSIBILITY OF THE CONTRACTOR TO CLEAR THE RIGHT OF WAY IN ACCORDANCE WITH THE PROVISIONS OF LAW AS IT AFFECTS EACH UTILITY INCLUDING IRRIGATION LINES, AND AT NO COST TO THE CITY.
 - CONSTRUCTION SHALL BE IN ACCORDANCE WITH THE CITY OF RIVERSIDE, DEPARTMENT OF PUBLIC WORKS, STANDARD DRAWINGS AND SPECIFICATIONS FOR PUBLIC WORKS CONSTRUCTION, 1976 EDITION.
 - PRIME COAT, SEAL COAT, AND PAINT BINDER ARE REQUIRED.
 - NOTICE TO CONTRACTOR: THE EXISTENCE AND LOCATION OF ANY UNDERGROUND UTILITY LINES OR STRUCTURES SHOWN ON THESE PLANS WERE OBTAINED BY A SEARCH OF THE AVAILABLE RECORDS. TO THE BEST OF OUR KNOWLEDGE THERE ARE NO EXISTING UTILITIES EXCEPT AS SHOWN ON THESE PLANS. THE CONTRACTOR IS REQUIRED TO TAKE PRECAUTIONARY MEASURES TO PROTECT THE UTILITY LINES SHOWN AND ANY OTHER LINES NOT OF RECORD OR NOT SHOWN ON THESE PLANS.

- TRAFFIC CONTROL SIGNS SHALL BE IN PLACE PRIOR TO OPENING THE STREETS TO TRAFFIC.
- THE SUBDIVIDER SHALL ARRANGE FOR A SOIL TEST TO BE MADE BY A SOILS ENGINEER AFTER THE STREETS HAVE BEEN PREPARED TO ROUGH GRADE. DEPTH OF BASE MATERIAL AND A.C. PAVING SHALL BE DETERMINED BY THE CITY OF RIVERSIDE DESIGN STANDARDS AND TEST PROCEDURES.
- SEE "STREET LIGHTING PLAN" FOR QUANTITY AND LOCATION OF REQUIRED STREET LIGHTS.
- TRIM EDGE OF EXISTING PAVEMENT WHERE NEW PAVEMENT JOINS TO A SMOOTH STRAIGHT LINE. CONSTRUCT MATCH-UP PAVING AS SHOWN ON PLAN AND OVERLAY AS DIRECTED IN THE FIELD TO PRODUCE A SMOOTH SECTION. ENGINEER ESTIMATES OVERLAY TO BE TONS.
- THE PRIVATE ENGINEER SIGNING THESE PLANS IS RESPONSIBLE FOR THE ACCURACY AND ACCEPTABILITY OF THE WORK HEREON. IN THE EVENT OF DISCREPANCIES ARISING DURING CONSTRUCTION, THE PRIVATE ENGINEER SIGNING THE PLANS SHALL BE RESPONSIBLE FOR DETERMINING AN ACCEPTABLE SOLUTION AND REVISING THE PLANS FOR APPROVAL BY THE CITY.

BENCH MARK
 CITY OF RIVERSIDE BENCH MARK E-8-C
 TOP OF YELLOW PAINTED BOLT @ BASE
 OF VENT PIPE SOUTH SIDE OF PUMP
 HOUSE N.W. CORNER OF WASHINGTON
 AND BRADLEY. ELEV. 103.20

CITY OF RIVERSIDE, CALIF
 DOMESTIC SYSTEM
 BY: *Henry Spain* 5-17-77
 CHIEF UTILITIES ENGINEER, WATER DATE

TYPICAL SECTION
 NO SCALE
 T.L.S.
 NOTE: CONSTRUCT 2 1/2" A.C. ASPHALT
 CONCRETE OVER 4" DB.

GAGE CANAL CO.
 APPROVED BY: *[Signature]*
 DATE: 3/30/77

J. F. DAVIDSON ASSOCIATES
 CIVIL ENGINEERS - SURVEYORS - PLANNERS
 RIVERSIDE, CALIFORNIA
 APPROVED BY: *[Signature]* DATE: 3/21/77
 (R.E. No. 17252)
 W.D. 4947 P.W. AMERICAN HOMES F.B. 1011

MARK	REVISIONS	APPR.	DATE

CITY OF RIVERSIDE, CALIFORNIA
 DEPARTMENT OF PUBLIC WORKS
 APPROVED BY: *[Signature]* DATE: 7-1-77
 PRINCIPAL ENGINEER
 TRAFFIC DIVISION
 CHIEF P. W. ENGR.

STREET PLAN & PROFILE
 PARCEL MAP 8584
 WHITEGATE AVENUE
 HORIZ. SCALE: 1" = 40'
 VERT. SCALE: 1" = 4'

PROJECT NO. **R-1967**
 SHEET 1 OF 1
 FILE NO. 9529