

PROFILE
CAMPUS VIEW DRIVE
SCALE: 1" = 4' VERT.

BENCH MARK:
CITY OF RIVERSIDE B.M. No. 600-52-68 — Top of West end of South cone. Headwall of Pipe Culvert #34, 285' West of center of crossing of Mt. Vernon Ave. 13' South of South rail and 4' lower than track. ELEV. 1170.890, being a U.S.G.S. Brass Disk.

GENERAL NOTES:

- Construction shall be in accordance with the Standard Specifications for Public Works Construction 1975 Edition and per City of Riverside Standard Drawings.
- All flagged elevations shall be staked in the field by the Engineer.
- The subdivider may place 2 1/2" A.C. over 4" untreated base, after streets have been prepared to rough grade, without taking a soil test.
- Trim edge of existing pavement where new pavement joins to a smooth straight line. Construction match-up paving as shown on the plans.
- See Electrical Plan prepared by the City of Riverside Public Utilities Department for number and location of required street lights.
- It shall be the responsibility of the Contractor to clear the right-of-way in accordance with the provisions of law as it affects each utility including irrigation lines and appurtenances, and at no cost to the city.
- Curb & Gutter shall be staked with 3' offsets at 25' intervals.
- 4' x 4' blockouts for mailboxes required in curb sidewalk.
- The private engineer signing these plans is responsible for assuring the accuracy and acceptability of the work hereon. In the event of discrepancies arising during construction as a result of errors or omissions, the private engineer shall be responsible for determining an acceptable solution and revising the plans for approval by the City.

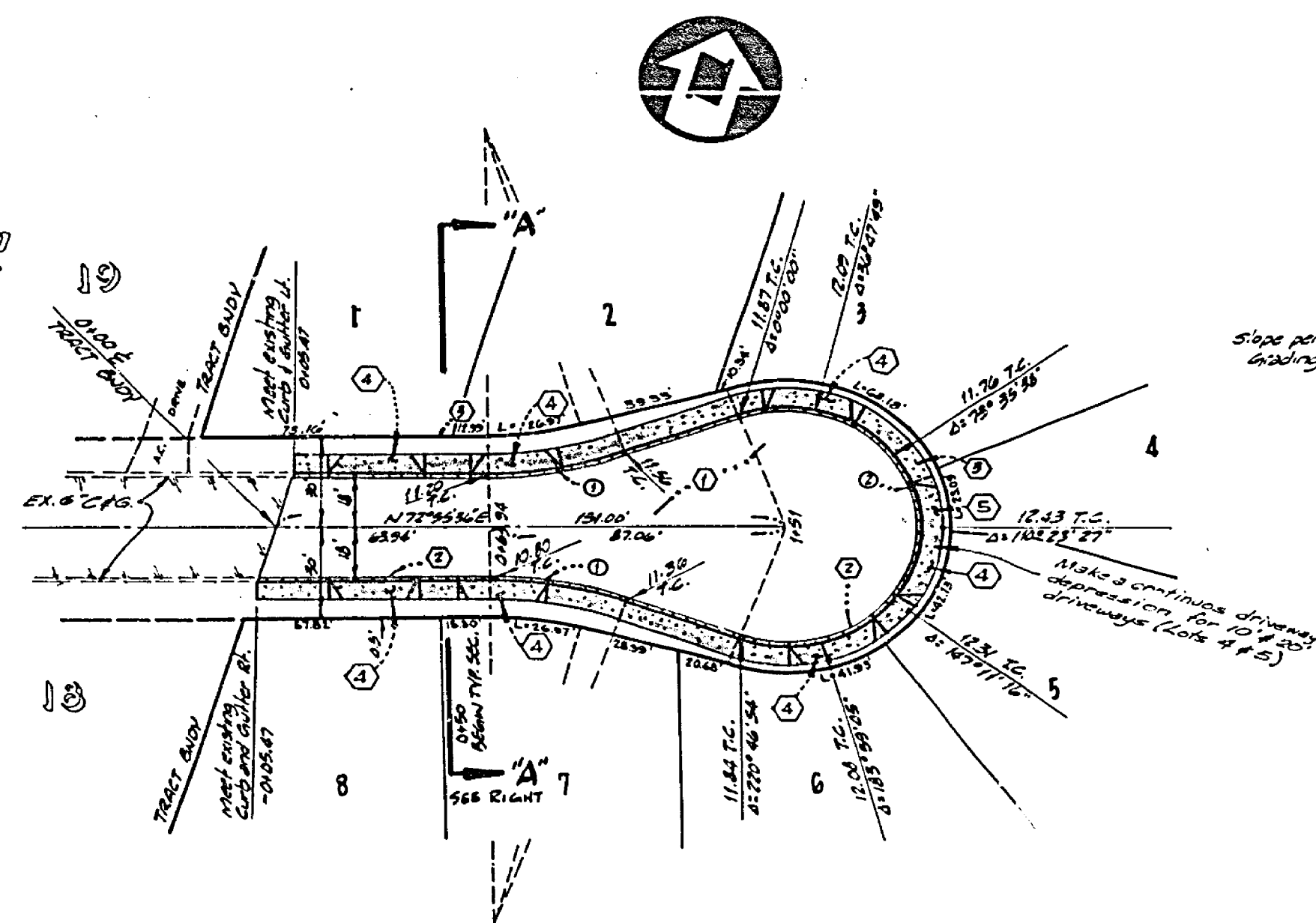
CONSTRUCTION NOTES

- Construct 2 1/2" A.C. paving over 4" D.G.
- Construct Standard 200 (6" C.F.) Concrete Curb and Gutter.
- Construct Standard 325 Concrete Sidewalk.
- Construct 20' Standard 302 Driveway Approach. Exact location to be determined in field.
- Construct 10' Standard 302 Driveway Approach. Exact location to be determined in field.

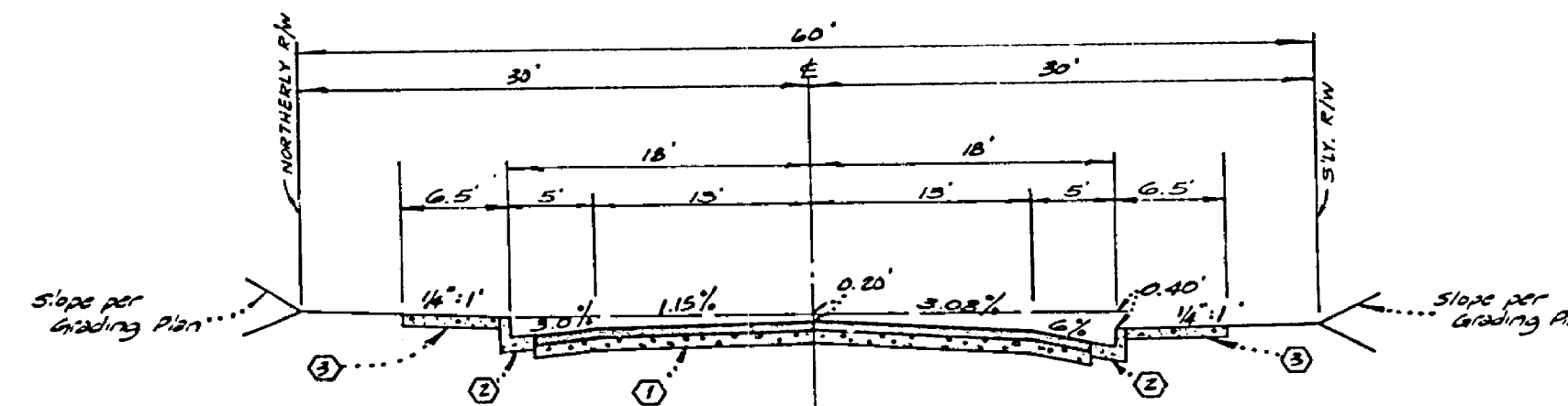
SPECIAL NOTE FROM PRIVATE ENGINEER TO CONTRACTOR

Contractor agrees that he shall assume sole and complete responsibility for job site conditions during the course of construction of this Project, including safety of all persons and property; that this requirement shall apply continuously and not be limited to normal working hours; and that the Contractor shall defend, indemnify and hold the Owner and the Engineer harmless from any and all liability, real or alleged, in connection with the performance of work on this Project, excepting for liability arising from the sole negligence of the Owner or the Engineer.

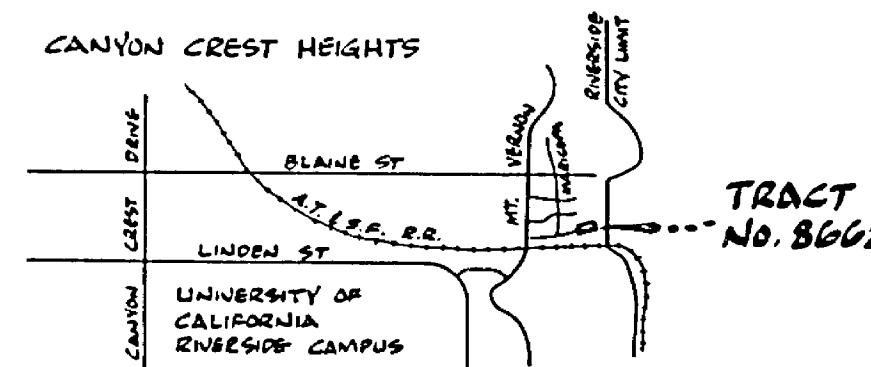
Glen L. Ludwig
GLEN L. LUDWIG R.C.E. #19191 DATE 12-3-77
INDEXED ZA



PLAN
CAMPUS VIEW DRIVE
SCALE: 1" = 40'



TYPICAL SECTION "A-A"
CAMPUS VIEW DR.
SCALE: 1" = 10' HORIZ; 1" = 4' VERT.
T.I. 5



LOCATION MAP
NO SCALE

CURVE DATA TABLE			
NO.	Δ	R	T
①	70° 28' 27"	115.00'	40.95'
②	77° 46' 54"	40.00'	134.16'

Ludwig Engineering
CIVIL ENGINEERING & SURVEYING
884-8217 109 E. Third Street
SAN BERNARDINO, CALIFORNIA

MARK	DESIGNED BY: DCS	DRAWN BY: DCS	CHECKED BY: DCS
APPR. DATE			

CITY OF RIVERSIDE, CALIFORNIA PUBLIC WORKS DEPARTMENT			
APPROVED BY	BY DATE	APPROVED BY	DATE
PRINCIPAL ENGINEER	<i>[Signature]</i> 5-23-77	<i>[Signature]</i>	
PAK DEPARTMENT		DIRECTOR OF PUBLIC WORKS	
TRAFFIC DIVISION			
CHIEF PUB. WORKS ENGR.			

STREET IMPROVEMENT PLANS		ACCOUNT NO.
TRACT No. 8662		DRAWING NO.
CAMPUS VIEW DRIVE		R-1983
SCALE: AS SHOWN		SHEET 1 OF 1