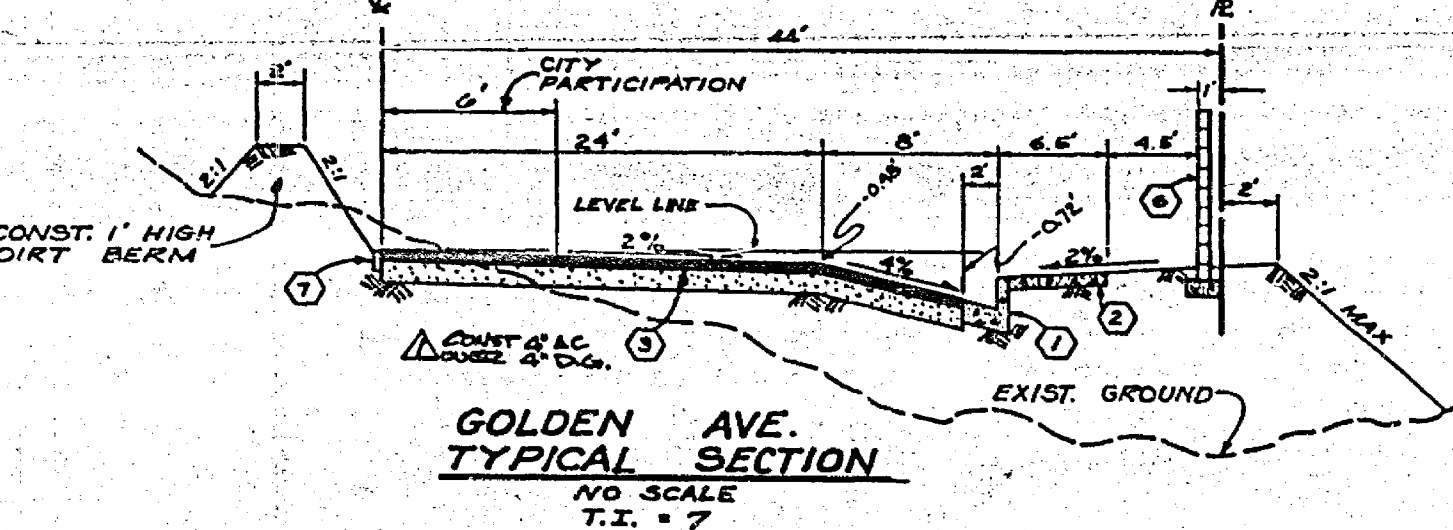


- GENERAL NOTES:**
- IT SHALL BE THE RESPONSIBILITY OF THE CONTRACTOR TO CLEAR THE RIGHT OF WAY IN ACCORDANCE WITH THE PROVISIONS OF LAW AS IT AFFECTS EACH UTILITY, INCLUDING IRRIGATION LINES AND APPURTENANCES, AND AT NO COST TO THE CITY.
 - CONSTRUCTION SHALL BE IN ACCORDANCE WITH THE CITY OF RIVERSIDE, DEPARTMENT OF PUBLIC WORKS, STANDARD DRAWINGS, AND THE STANDARD SPECIFICATIONS FOR PUBLIC WORKS CONSTRUCTION, 1976 EDITION.
 - TRIM EDGE OF EXISTING PAVEMENT, WHERE NEW PAVEMENT JOINS, TO A SMOOTH STRAIGHT LINE. CONSTRUCT HATCH-UP PAVING AS SHOWN ON PLAN AND OVERLAY AS DIRECTED IN THE FIELD TO PRODUCE A SMOOTH SECTION. ENGINEER ESTIMATES OVERLAY TO BE . TONS.
 - PRIME COAT, SEAL COAT, AND PAINT BINDER ARE REQUIRED.
 - THE PRIVATE ENGINEER SHALL STAKE CURB AND GUTTER WITH 3.0 OFFSETS AT 25-FOOT INTERVALS AND ALL FLAGGED ELEVATIONS SHOWN ON PLANS SHALL ALSO BE STAKED.
 - DEVELOPER SHALL ARRANGE FOR A SOILS TEST TO BE MADE BY A SOILS ENGINEER AFTER STREET HAS BEEN PREPARED TO ROUGH GRADE. DEPTH OF BASE MATERIAL AND A.C. PAVEMENT SHALL BE DETERMINED BY CITY OF RIVERSIDE DESIGN STANDARDS AND TEST PROCEDURE.
 - NOTICE TO CONTRACTORS: THE EXISTENCE AND LOCATION OF ANY UNDERGROUND UTILITY PIPES OR STRUCTURES SHOWN ON THESE PLANS WERE OBTAINED BY A SEARCH OF THE AVAILABLE RECORDS. TO THE BEST OF OUR KNOWLEDGE THERE ARE NO EXISTING UTILITIES EXCEPT AS SHOWN ON THESE PLANS. THE CONTRACTOR IS REQUIRED TO TAKE DUE PRECAUTIONARY MEASURES TO PROTECT THE UTILITY LINES SHOWN AND OTHER LINES NOT SHOWN ON THESE PLANS.
 - CONSTRUCT DRIVEWAY APPROACHES PER STANDARD DRAWING 302. EXACT SIZE AND LOCATION TO BE DETERMINED AT THE TIME OF CONSTRUCTION AS APPROVED BY THE TRAFFIC ENGINEER.
 - ALL TRAFFIC SIGNS SHALL BE INSTALLED PRIOR TO OPENING THE STREETS TO TRAFFIC.
 - SEE "STREET LIGHTING PLANS" FOR QUANTITY AND LOCATION OF REQUIRED STREET LIGHTS.
 - SEE LANDSCAPE AND SPRINKLER PLAN FOR PARKWAY ON GOLDEN AVENUE.
 - 4"x4" BLOCKOUTS FOR MAIL BOXES REQUIRED IN CURB SIDEWALK.

NOTE: THE PRIVATE ENGINEER SIGNING THESE PLANS IS RESPONSIBLE FOR THE ACCURACY AND ACCEPTABILITY OF THE WORK HEREON. IN THE EVENT OF DISCREPANCIES ARISING DURING CONSTRUCTION THE PRIVATE ENGINEER SIGNING THE PLANS SHALL BE RESPONSIBLE FOR DETERMINING AN ACCEPTABLE SOLUTION AND REVISING THE PLANS FOR APPROVAL BY THE CITY.

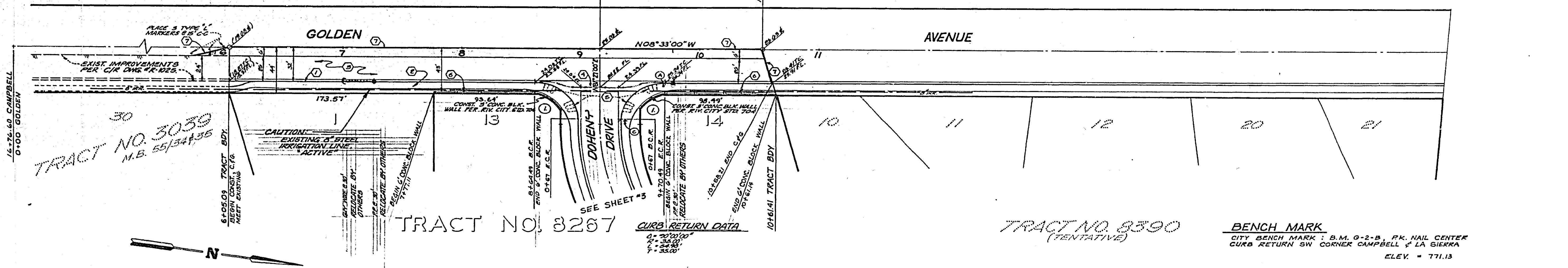
STREET NAME & TRAFFIC EVEN SCHEDULE	
(A) GOLDEN AVENUE	5700
(B) DOHNEY DRIVE	5700
(C) BOLIVAR STREET	5700
(D) DOHNEY DRIVE	11200
(E) R-1 STOP SIGN - 30' OCTAGON	
(F) W-53 (NOT A THROUGH STREET) 24"x24"	



LEGEND

6'0" CITY PARTICIPATION: CONTRACTOR TO RUSH GRADE AND COMPACT SUBGRADE; CITY TO FINE GRADE AND PLACE BASE AND PAVEMENT. IN ORDER TO COORDINATE THE CITY'S PORTION OF THE WORK THE DEVELOPER SHALL GIVE THE CITY 45 DAYS' NOTICE IN ORDER THAT THE DEVELOPER'S AND CITY'S WORK MAY BE INSTALLED CONCURRENTLY.

- CONSTRUCTION NOTES:**
- CONSTRUCT CONCRETE CURB AND GUTTER, TYPE I, WITH 6" CURB FACE PER CITY OF RIVERSIDE STANDARD NO. 200.
 - CONSTRUCT CONCRETE CURB SIDEWALK PER CITY OF RIVERSIDE STANDARD NO. 325.
 - PLACE ASPHALTIC CONCRETE (A.C.) OVER DECOMPOSED GRANITE (D.G.) AS PER TYPICAL SECTION.
 - CONSTRUCT 10' CONCRETE CROSS GUTTER PER CITY OF RIVERSIDE STANDARD NO. 220.
 - CONSTRUCT WHEELCHAIR DEPRESSION PER CITY OF RIVERSIDE STANDARD NO. 304.
 - CONSTRUCT 6" CONCRETE BLOCK WALL PER CITY OF RIVERSIDE STANDARD NO. 704.
 - PLACE 2"x4" REDWOOD HEADER AT THE EDGE OF PAVEMENT BY DEVELOPER.



CITY OF RIVERSIDE IRRIGATION SYSTEM Chief Utilities Engineer - Water Date: 7-25-77	J.F. DAVIDSON ASSOCIATES PLANNERS 3426 TENTH STREET RIVERSIDE, CALIFORNIA Approved by: [Signature] Date: 3/3/77 R.E. NO. 17520	CITY OF RIVERSIDE, CALIFORNIA DEPARTMENT OF PUBLIC WORKS		INCHES TO PROJECT NO.
		APPROVED BY: [Signature] DATE: 8/16/77		PLAN & PROFILE TRACT 8267 GOLDEN AVENUE SHEET 1 OF 3
W.G. 1974 FOR: DWIGHT W. MIZE P.B. 1104/143		DESIGNED BY: SAO DRAWN BY: SP13 CHECKED BY: J.C.		HORIZ. SCALE: 1" = 40' VERT. SCALE: 1" = 4' FILE NO. 5526