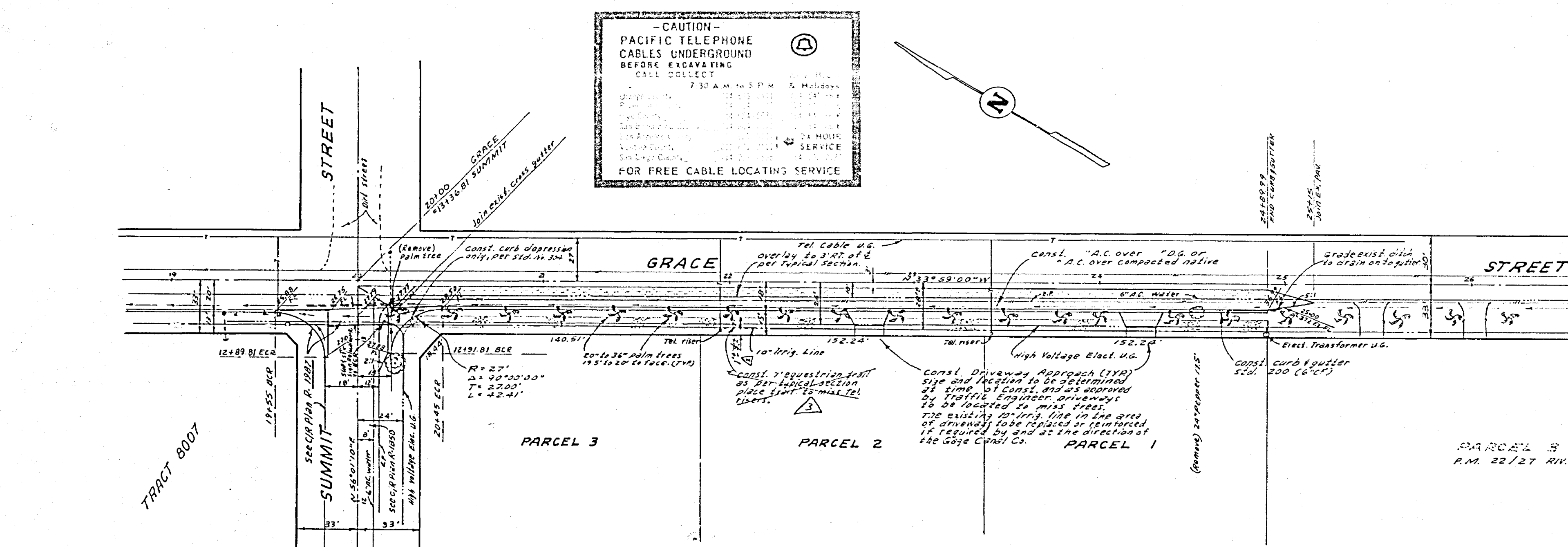
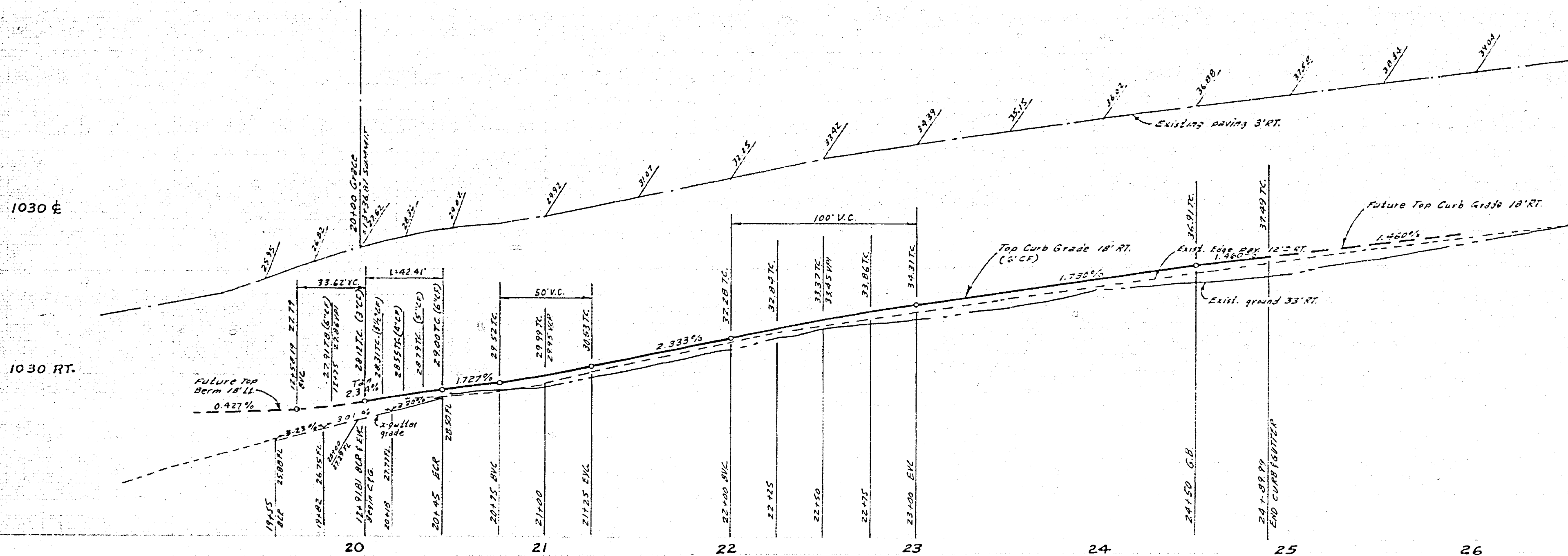


E 1040

RT. 1040



CAUTION
 PACIFIC TELEPHONE
 CABLES UNDERGROUND
 BEFORE EXCAVATING
 CALL COLLECT
 7:30 A.M. to 5 P.M. 7, MULLER
 24 HOUR
 SERVICE
 FOR FREE CABLE LOCATING SERVICE

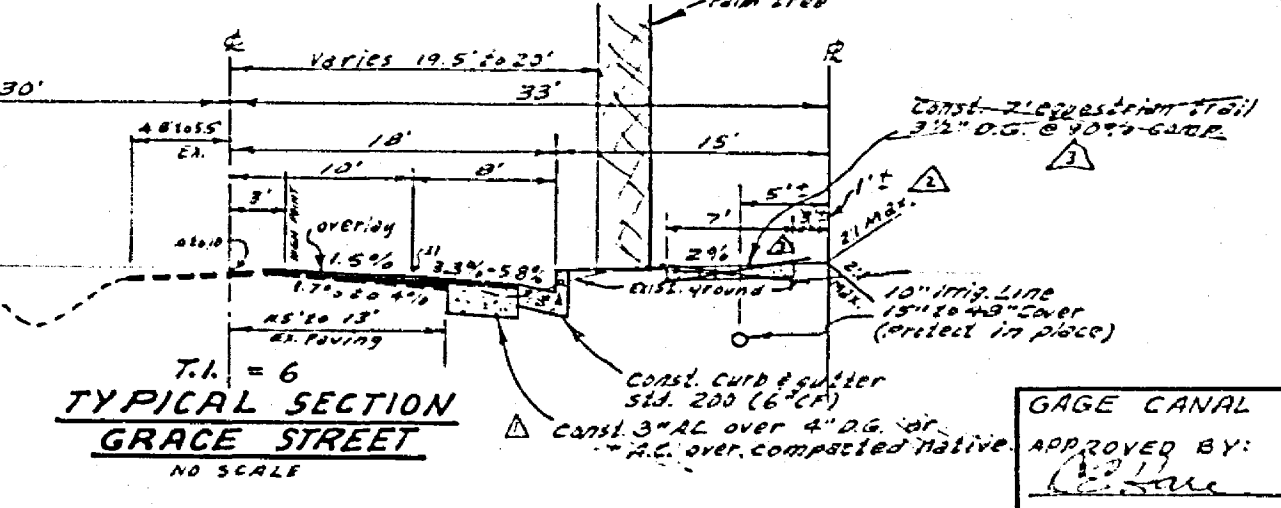
E.G.C. BENCH MARK: ELEV. 1003.270
 Top of yellow painted bolt @ base of vent pipe set on
 south side of Pump station slab on N.W. cor. Washington
 and Bradley.

GENERAL NOTES:

1. Construction shall be in accordance with the Standard Specifications for Public Works Construction, 1976 Edition and City of Riverside Standard Drawings.
2. The subdivider shall arrange for a soil test to be taken by a soils engineer after the streets have been prepared to rough grade. Details of these material and A.C. paving shall be determined by City of Riverside Design Standards and Test Procedures.
3. All flagged elevations shall be stated in the field by the private engineer.
4. All traffic signs shall be installed prior to opening the streets to traffic.
5. It shall be the responsibility of the contractor to clear the right of way in accordance with the provisions of law as it affects each utility including irrigation lines and appurtenances, and at no cost to the City.
6. Top edge of existing pavement where new pavement joins to a smooth straight line. Construct grade-up paving as shown and overlap paving as directed in the field to produce a smooth section, engineer estimates overlay to be 30' long.
7. Curb and gutter shall be stated with 3' offset at 25' intervals.
8. Construct driveway approaches per standard Dwg. 302, Type II, exact size and location to be determined at the time of construction as approved by the Traffic Engineer.
9. See "STREET LIGHTING PLANS" for quantity and location of required street lighting required.
10. All overhanging tree limbs that are less than 15' above the street grade shall be trimmed back by the Developer. Contact Parks Dept at 907-1200, 24 hr. prior to trimming trees.

NOTE:

The private engineer signing these plans is responsible for the accuracy and acceptability of the work herein. In the event of discrepancies arising during construction the private engineer shall be responsible for devising an acceptable solution and retaining the plans for approval by the City.



ALBERT A. WEBB ASSOCIATES
 CIVIL ENGINEERS
 RIVERSIDE, CALIFORNIA
 APPROVED BY: *[Signature]* DATE: 11/25/77
 RE. No. 9276
 W.O. 76-270 FOR BIRTH Dev. Corp. F.B. 1037

REVISIONS	DATE	BY	CHKD.	APP'D.
Removed Equivocal Trail ENCL. 2-11-77	2-11-77	W.B.	W.B.	W.B.
Revised Location of Equivocal Trail 2-11-77	2-11-77	W.B.	W.B.	W.B.
Added paving section per S2006	2-1-78	W.B.	W.B.	W.B.

CITY OF RIVERSIDE, CALIFORNIA
 PUBLIC WORKS DEPARTMENT
 APPROVED BY: *[Signature]* DATE: 8-2-77
 DIRECTOR OF PUBLIC WORKS

STREET PLAN AND PROFILE
GRACE STREET
 PARCEL MAP NO. 8424
 SCALE: 1" = 40' Horiz. - 1" = 4' Vert.

ACCOUNT NO. 111063000
 DRAWING NUMBER **R-2023**
 SHEET **1** OF **1**
 76-270-A

