

- CONSTRUCTION NOTES**
1. CONSTRUCTION SHALL BE IN ACCORDANCE WITH THE CITY OF RIVERSIDE, CALIFORNIA DEPARTMENT OF PUBLIC WORKS STANDARD DRAWINGS AND SPECIFICATIONS FOR PUBLIC WORKS CONSTRUCTION, 1976 EDITION.
 2. TOP OF CURB SHALL BE 2" BELOW FINISH GRADE.
 3. CURB SHALL BE 18" HIGH AND 12" WIDE.
 4. CURB SHALL BE 18" HIGH AND 12" WIDE.
 5. CURB SHALL BE 18" HIGH AND 12" WIDE.
 6. CURB SHALL BE 18" HIGH AND 12" WIDE.

"THE PRIVATE ENGINEER SIGNING THESE PLANS IS RESPONSIBLE FOR THE ACCURACY AND ACCEPTABILITY OF THE WORK HEREON. IN THE EVENT OF DISCREPANCIES ARISING DURING CONSTRUCTION, THE PRIVATE ENGINEER SIGNING THESE PLANS SHALL BE RESPONSIBLE FOR DETERMINING AN ACCEPTABLE SOLUTION AND REVISING THE PLANS FOR APPROVAL BY THE CITY."

- GENERAL NOTES**
1. IT SHALL BE THE RESPONSIBILITY OF THE CONTRACTOR TO CLEAR THE RIGHT-OF-WAY IN ACCORDANCE WITH THE PROVISIONS OF LAW AS IT AFFECTS EACH UTILITY INCLUDING IRRIGATION LINES AND APPURTENANCES AND AT NO COST TO THE CITY.
 2. CONSTRUCTION SHALL BE IN ACCORDANCE WITH THE CITY OF RIVERSIDE, CALIFORNIA DEPARTMENT OF PUBLIC WORKS STANDARD DRAWINGS AND SPECIFICATIONS FOR PUBLIC WORKS CONSTRUCTION, 1976 EDITION.
 3. TOP EDGE OF EXISTING PAVEMENT SHALL BE JOINED TO NEW PAVEMENT TO A CLEAN STRAIGHT LINE. CONSTRUCTION SHALL BE AS SHOWN AND OVERLAY AS DIRECTED IN THE FIELD TO PRODUCE A SMOOTH GRADIENT. ENGINEER ESTIMATES OVERLAY TO BE 1.5 TONS.
 4. CONSTRUCTION STAKES TO BE 3' BEHIND CURB @ 25' INTERVALS.
 5. THE DEVELOPER SHALL ARRANGE FOR A SOIL TEST TO BE MADE BY A SOILS ENGINEER. BEFORE THE STREETS HAVE BEEN PREPARED TO ROUGH GRADE, DEPTH OF BASE MATERIAL AND ALL PAVING SHALL BE DETERMINED BY THE CITY DERIVING DESIGN STANDARDS AND TEST PROCEDURES.
 6. SEE STREET LIGHTING PLANS FOR QUANTITY AND LOCATION OF REQUIRED STREET LIGHTS.
 7. ALL FLAGGED ELEVATIONS SHALL BE STAKED IN THE FIELD BY THE PRIVATE ENGINEER.
 8. SEE LANDSCAPING AND SPRINKLER SYSTEM PLANS FOR PARKWAY ON VAN BUREN & CLEVELAND.

BENCH MARK
 BRASS DISC STAMPED (24-B) @ INT. OF VAN BUREN BLVD. & VICTORIA AVE. FB. 735443 ELEV. 681.950

TYPICAL HALF SECTION NWLY BOUND TRAFFIC LANE VAN BUREN BOULEVARD
 SCALE: 1/4" = 1'-0" (VERT. SCALE: 1" = 4')

HAWKINS, ROBERTSON & ASSOC.
 ENGINEERS & SURVEYORS
 RIVERSIDE, CALIFORNIA

APPROVED BY: *James L. Robertson* 8-1-74
 DATE: 8-1-74
 CITY OF RIVERSIDE BOARD OF PUBLIC WORKS

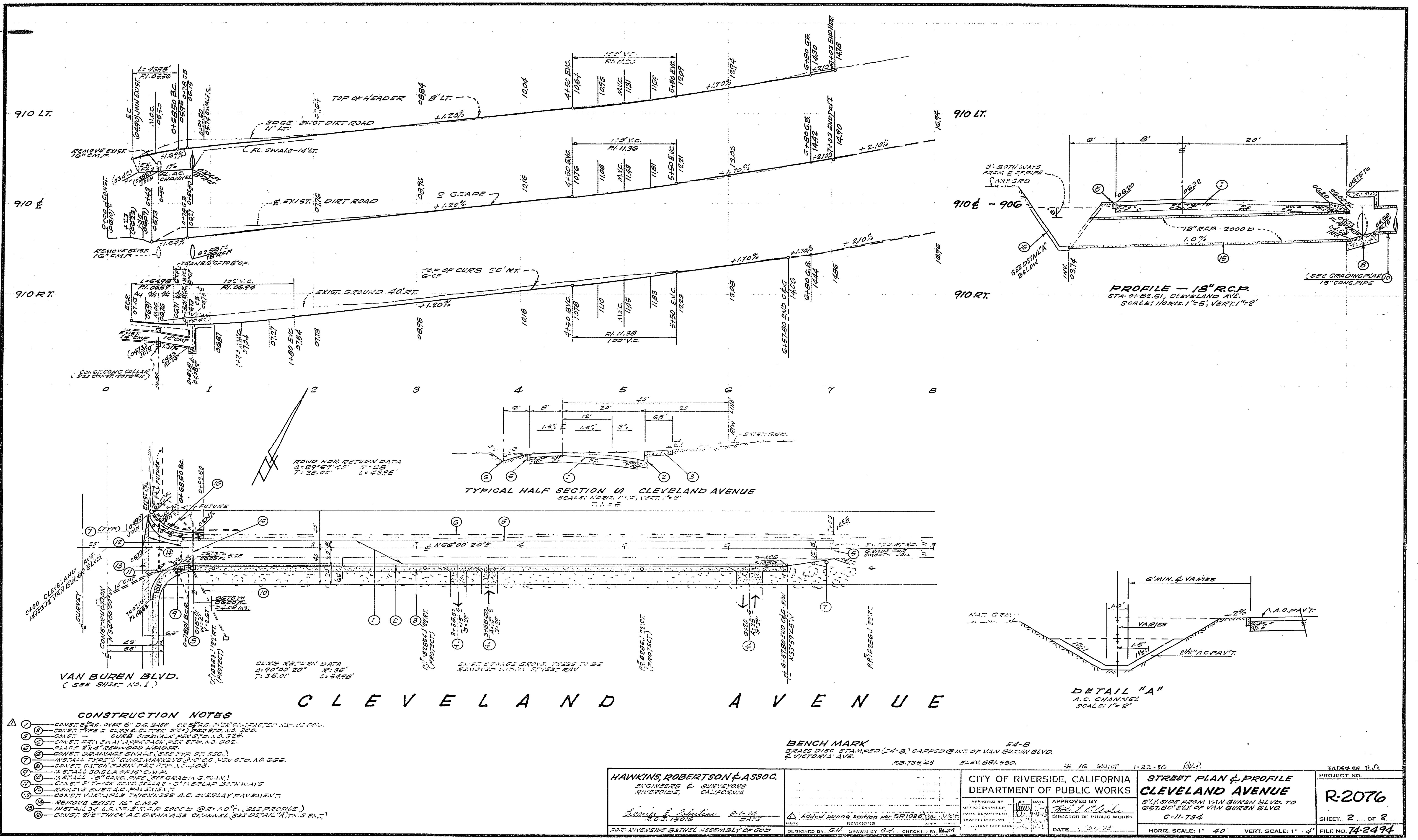
APPROVED BY: *[Signature]*
 DIRECTOR OF PUBLIC WORKS
 DATE: 8-1-74

CITY OF RIVERSIDE, CALIFORNIA
 DEPARTMENT OF PUBLIC WORKS

PROJECT NO. **R-2076**
 SHEET **2** OF **2**
 FILE NO. **74-2494**

STREET PLAN & PROFILE
VAN BUREN BLVD.
 NELY SIDE, FROM CLEVELAND AVE. TO 720' S. OF CLEVELAND AVE.
 C-11-734

HORIZ. SCALE: 1" = 20' VERT. SCALE: 1" = 4'



C L E V E L A N D A V E N U E

- CONSTRUCTION NOTES**
1. CONSTRUCT OVER 6" D.G. SAND. (SEE DETAIL A FOR CONSTRUCTION DETAILS)
 2. CONSTRUCT 15" CONCRETE CURB. (SEE DETAIL A FOR CONSTRUCTION DETAILS)
 3. CONSTRUCT 15" CONCRETE CURB. (SEE DETAIL A FOR CONSTRUCTION DETAILS)
 4. CONSTRUCT 15" CONCRETE CURB. (SEE DETAIL A FOR CONSTRUCTION DETAILS)
 5. CONSTRUCT 15" CONCRETE CURB. (SEE DETAIL A FOR CONSTRUCTION DETAILS)
 6. CONSTRUCT 15" CONCRETE CURB. (SEE DETAIL A FOR CONSTRUCTION DETAILS)
 7. CONSTRUCT 15" CONCRETE CURB. (SEE DETAIL A FOR CONSTRUCTION DETAILS)
 8. CONSTRUCT 15" CONCRETE CURB. (SEE DETAIL A FOR CONSTRUCTION DETAILS)
 9. CONSTRUCT 15" CONCRETE CURB. (SEE DETAIL A FOR CONSTRUCTION DETAILS)
 10. CONSTRUCT 15" CONCRETE CURB. (SEE DETAIL A FOR CONSTRUCTION DETAILS)

| | | | |
|---|--|---|--|
| <p>HAWKINS, ROBERTSON & ASSOC. ENGINEERS & SURVEYORS RIVERSIDE, CALIFORNIA</p> <p><i>Robertson</i> DATE: 1-22-30</p> | <p>CITY OF RIVERSIDE, CALIFORNIA DEPARTMENT OF PUBLIC WORKS</p> <p>APPROVED BY: <i>[Signature]</i> DATE: 1-22-30</p> | <p>STREET PLAN & PROFILE CLEVELAND AVENUE</p> <p>5' X 5' SIDES FROM VAN BUREN BLVD. TO 687.50' ELY OF VAN BUREN BLVD. C-11-734</p> | <p>PROJECT NO. R-2076</p> <p>SHEET 2 OF 2</p> <p>FILE NO. 74-2494</p> |
| <p>DESIGNED BY: G.H. DRAWN BY: G.H. CHECKED BY: BEM</p> | | <p>HORIZ. SCALE: 1" = 40' VERT. SCALE: 1" = 4'</p> | |