

GENERAL NOTES

1. THE CONTRACTOR SHALL BE RESPONSIBLE FOR OBTAINING ALL NECESSARY PERMITS AND APPROVALS FROM THE CITY OF RIVERSIDE AND THE CALIFORNIA DEPARTMENT OF TRANSPORTATION AND PUBLIC UTILITIES (CALTRANS) PRIOR TO THE START OF CONSTRUCTION.

2. THE CONTRACTOR SHALL MAINTAIN ACCESS TO ALL ADJACENT PROPERTIES AND UTILITIES AT ALL TIMES DURING CONSTRUCTION.

3. THE CONTRACTOR SHALL BE RESPONSIBLE FOR PROTECTING ALL EXISTING UTILITIES AND STRUCTURES TO REMAIN.

4. THE CONTRACTOR SHALL MAINTAIN THE EXISTING GRADES AND ELEVATIONS OF ALL EXISTING STRUCTURES AND UTILITIES TO REMAIN.

5. THE CONTRACTOR SHALL BE RESPONSIBLE FOR THE REMOVAL AND RELOCATION OF ALL EXISTING BARRICADES THAT ARE BEING REMOVED OR RELOCATED.

6. THE CONTRACTOR SHALL CONTACT THE PUBLIC SERVICE DEPT. (PST-PSD) TO PICK UP THE EXISTING STD. 180 BARRICADES THAT ARE BEING REMOVED. CITY'S INSPECTOR DETERMINES WHETHER BARRICADE CAN BE RELOCATED.

7. THE CONTRACTOR SHALL CONTACT THE PUBLIC SERVICE DEPT. (PST-PSD) TO PICK UP THE EXISTING STD. 180 BARRICADES THAT ARE BEING REMOVED. CITY'S INSPECTOR DETERMINES WHETHER BARRICADE CAN BE RELOCATED.

8. THE CONTRACTOR SHALL CONTACT THE PUBLIC SERVICE DEPT. (PST-PSD) TO PICK UP THE EXISTING STD. 180 BARRICADES THAT ARE BEING REMOVED. CITY'S INSPECTOR DETERMINES WHETHER BARRICADE CAN BE RELOCATED.

9. THE CONTRACTOR SHALL CONTACT THE PUBLIC SERVICE DEPT. (PST-PSD) TO PICK UP THE EXISTING STD. 180 BARRICADES THAT ARE BEING REMOVED. CITY'S INSPECTOR DETERMINES WHETHER BARRICADE CAN BE RELOCATED.

10. THE CONTRACTOR SHALL CONTACT THE PUBLIC SERVICE DEPT. (PST-PSD) TO PICK UP THE EXISTING STD. 180 BARRICADES THAT ARE BEING REMOVED. CITY'S INSPECTOR DETERMINES WHETHER BARRICADE CAN BE RELOCATED.

11. THE CONTRACTOR SHALL CONTACT THE PUBLIC SERVICE DEPT. (PST-PSD) TO PICK UP THE EXISTING STD. 180 BARRICADES THAT ARE BEING REMOVED. CITY'S INSPECTOR DETERMINES WHETHER BARRICADE CAN BE RELOCATED.

12. THE CONTRACTOR SHALL CONTACT THE PUBLIC SERVICE DEPT. (PST-PSD) TO PICK UP THE EXISTING STD. 180 BARRICADES THAT ARE BEING REMOVED. CITY'S INSPECTOR DETERMINES WHETHER BARRICADE CAN BE RELOCATED.

13. THE CONTRACTOR SHALL CONTACT THE PUBLIC SERVICE DEPT. (PST-PSD) TO PICK UP THE EXISTING STD. 180 BARRICADES THAT ARE BEING REMOVED. CITY'S INSPECTOR DETERMINES WHETHER BARRICADE CAN BE RELOCATED.

14. THE CONTRACTOR SHALL CONTACT THE PUBLIC SERVICE DEPT. (PST-PSD) TO PICK UP THE EXISTING STD. 180 BARRICADES THAT ARE BEING REMOVED. CITY'S INSPECTOR DETERMINES WHETHER BARRICADE CAN BE RELOCATED.

15. THE CONTRACTOR SHALL CONTACT THE PUBLIC SERVICE DEPT. (PST-PSD) TO PICK UP THE EXISTING STD. 180 BARRICADES THAT ARE BEING REMOVED. CITY'S INSPECTOR DETERMINES WHETHER BARRICADE CAN BE RELOCATED.

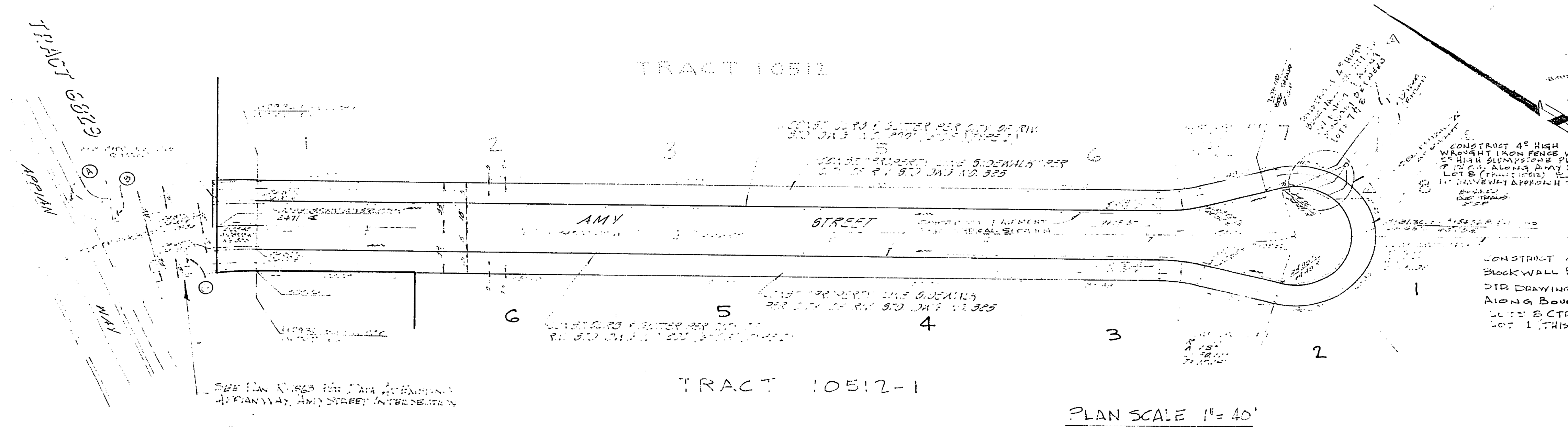
16. THE CONTRACTOR SHALL CONTACT THE PUBLIC SERVICE DEPT. (PST-PSD) TO PICK UP THE EXISTING STD. 180 BARRICADES THAT ARE BEING REMOVED. CITY'S INSPECTOR DETERMINES WHETHER BARRICADE CAN BE RELOCATED.

17. THE CONTRACTOR SHALL CONTACT THE PUBLIC SERVICE DEPT. (PST-PSD) TO PICK UP THE EXISTING STD. 180 BARRICADES THAT ARE BEING REMOVED. CITY'S INSPECTOR DETERMINES WHETHER BARRICADE CAN BE RELOCATED.

18. THE CONTRACTOR SHALL CONTACT THE PUBLIC SERVICE DEPT. (PST-PSD) TO PICK UP THE EXISTING STD. 180 BARRICADES THAT ARE BEING REMOVED. CITY'S INSPECTOR DETERMINES WHETHER BARRICADE CAN BE RELOCATED.

19. THE CONTRACTOR SHALL CONTACT THE PUBLIC SERVICE DEPT. (PST-PSD) TO PICK UP THE EXISTING STD. 180 BARRICADES THAT ARE BEING REMOVED. CITY'S INSPECTOR DETERMINES WHETHER BARRICADE CAN BE RELOCATED.

20. THE CONTRACTOR SHALL CONTACT THE PUBLIC SERVICE DEPT. (PST-PSD) TO PICK UP THE EXISTING STD. 180 BARRICADES THAT ARE BEING REMOVED. CITY'S INSPECTOR DETERMINES WHETHER BARRICADE CAN BE RELOCATED.



STREET NAME	TRAFFIC SIGN	SCH.
APPIAN WAY	6200	
AMY STREET	2500	
R-1 (STOP SIGN)	24" OCTAGON	
W-55 (NOT A THROUGH STREET)	24" X 24"	

CITY OF RIVERSIDE
OVERHEAD & UNDERGROUND

FOR: *[Signature]*
CHIEF UTILITIES ENGINEER, ELECTRIC

DATE: 8-1-78

SOEINER & ASSOCIATES
25997 S. HIGHLAND AVENUE
HIGHLAND, CA 92346

DATE: 8-1-78

FOR: CITY OF RIVERSIDE
ALBERT A. WEBB ASSOCIATES
CIVIL ENGINEERS
RIVERSIDE, CALIFORNIA

APPROVED BY: *[Signature]*
DATE: 8-1-78

CITY OF RIVERSIDE, CALIFORNIA
PUBLIC WORKS DEPARTMENT

VICINITY MAP		STREET PLAN AND PROFILE	
NO SCALE		AMY STREET TRACT 10512-1	
SCALE: Horiz. 1" = 40'		VERT. 1" = 4'	
INDEX MAP		DRAWING NUMBER	
		R-2137	
		SHEET 1 OF 1	

