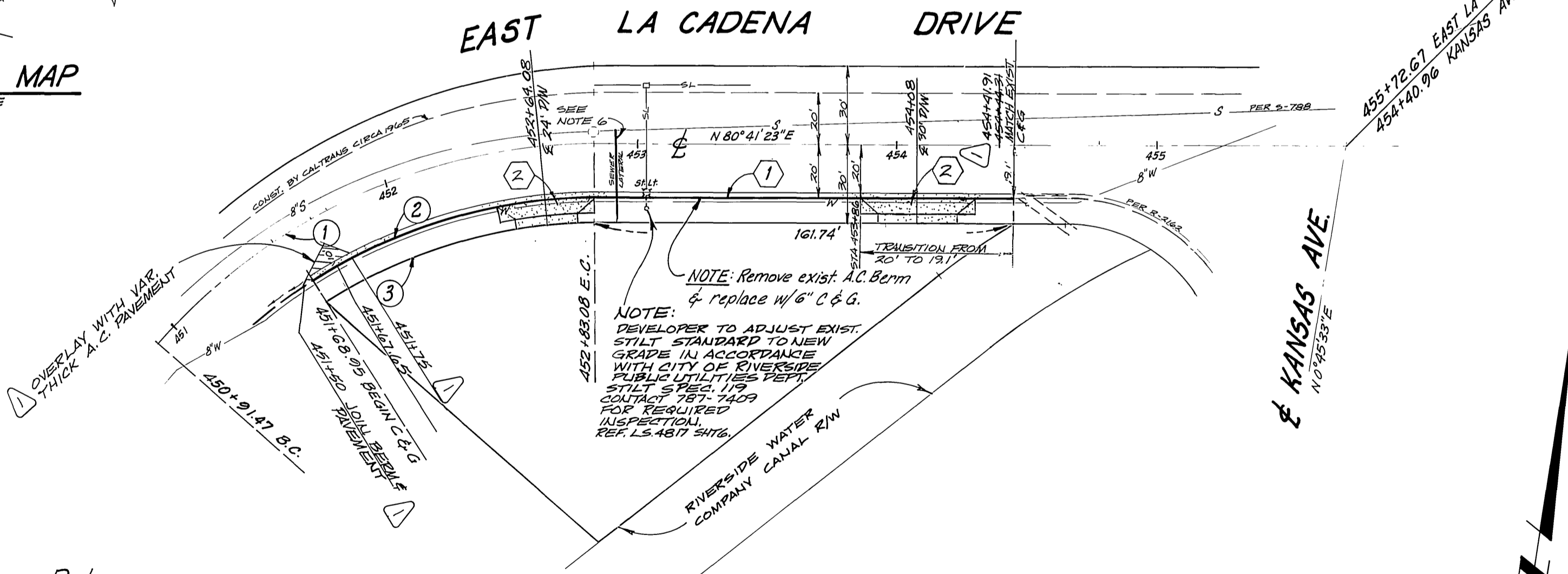
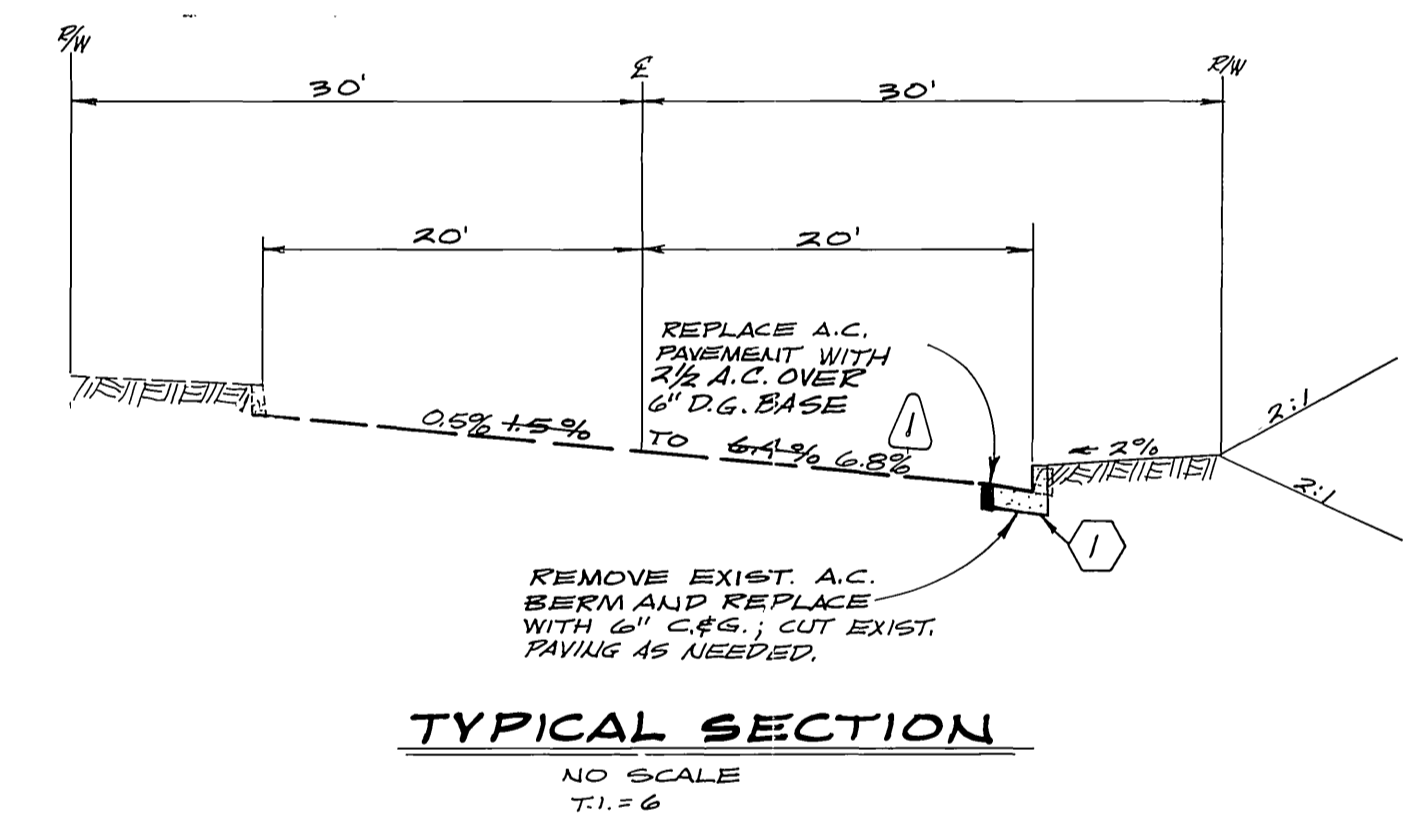


VICINITY MAP
NO SCALE



Curve Data

① R = 225'	② R = 205'
Δ = 48°41'32"	Δ = 31°53'53"
T = 102.05'	T = 58.59'
L = 191.61'	L = 114.13'
③ R = 195'	
Δ = 31°53'53"	
T = 55.73'	
L = 108.56'	



TYPICAL SECTION
NO SCALE
T.I.E.

BENCH MARK
BRASS DISK STAMPED BM 66-B-61 47 YARDS S.W. OF THE S.W. EDGE OF U.S. HIGHWAY 60 OVERCROSSING AT THE A.T. & P.F. TRACKS, 451 N.W. OF THE N.W. RAIL, 22' SE. OF THE E. OF E. LA CADENA DR. IN THE TOP OF S.E. HEADWALL
ELEV. 879.883

GENERAL NOTES:

- Exact location of water service to be determined in the field
- It shall be the responsibility of the contractor to clear the right of way in accordance with the provisions of law as it affects each utility including irrigation lines and appurtenances and at no cost to the City.
- Construction shall be in accordance with the City of Riverside, Department of Public Works, Standard Drawings, and the Standard Specifications for Public Works Construction, 1976 Edition.
- Trim edge of existing paving where new paving joins, to a smooth, straight line. Construct match-up paving as shown on the plan and overlay paving as directed in the field to produce a smooth section.
- Curb and gutter shall be staked with 3' offsets at 25' intervals.
- Exact location of laterals to be determined in the field at the direction of the owner. Avoid conflict with proposed and/or existing facilities.
- All flagged elevations shall be staked in the field by the private engineer.
- The private engineer signing these plans is responsible for assuring the accuracy and acceptability of the work hereon. In the event of discrepancies arising during construction as a result of errors or omissions, the private engineer shall be responsible for determining an acceptable solution and revising the plans for approval by the City.

CONSTRUCTION NOTES:

- Construct Curb and Gutter, Type I, (6" C.F.) per City of Riverside Standard Drawing No. 200.
- CONSTRUCT DRIVEWAY APPROACH PER CITY OF RIVERSIDE STANDARD DRAWINGS NO. 302, TYPE III.

APPROVED BY: *[Signature]* 6-25-79
CHIEF UTILITIES ENGINEER-WATER DATE

APPROVED BY: *[Signature]* 6-25-79
CHIEF UTILITIES ENGINEER-ELEC. DATE

Bouje Engineering Corporation
consulting engineers | architects
118 AIRPORT DR. SUITE 210
SAN BERNARDINO, CALIF. 92408 - PH (714) 824-5580

APPROVED BY: *[Signature]* 6/26/79
R.C.E. 11251 DATE

REVISED PROFILE & TYPICAL SECTION TO SMOOTH PROFILE AND FIT EXISTING PAVING BETTER

MARK	REVISIONS	APPR	DATE

DESIGNED BY: _____ DRAWN BY: *[Signature]* CHECKED BY: *[Signature]*

CITY OF RIVERSIDE
PUBLIC WORKS DEPARTMENT

APPROVED BY: *[Signature]* DATE: 6-27-79
PRINCIPAL ENGINEER

APPROVED BY: *[Signature]* DATE: 6-27-79
PUBLIC WORKS DIRECTOR

TRAFFIC DIVISION: *[Signature]* DATE: 6-27-79
CHIEF P.W. ENGINEER

INDEXED S.K.

ACCOUNT NO. **R-2202**

SHEET 1 OF 1

STREET IMPROVEMENTS
EAST LA CADENA DRIVE
SOUTH SIDE BETWEEN KANSAS AVE & SPRUCE ST
FOR 2200 EAST LA CADENA DR. BLDG PERMIT
Office site - Plot Plan

HORIZ SCALE: 1" = 40' VERT SCALE: 1" = 4'