

1155 LT.

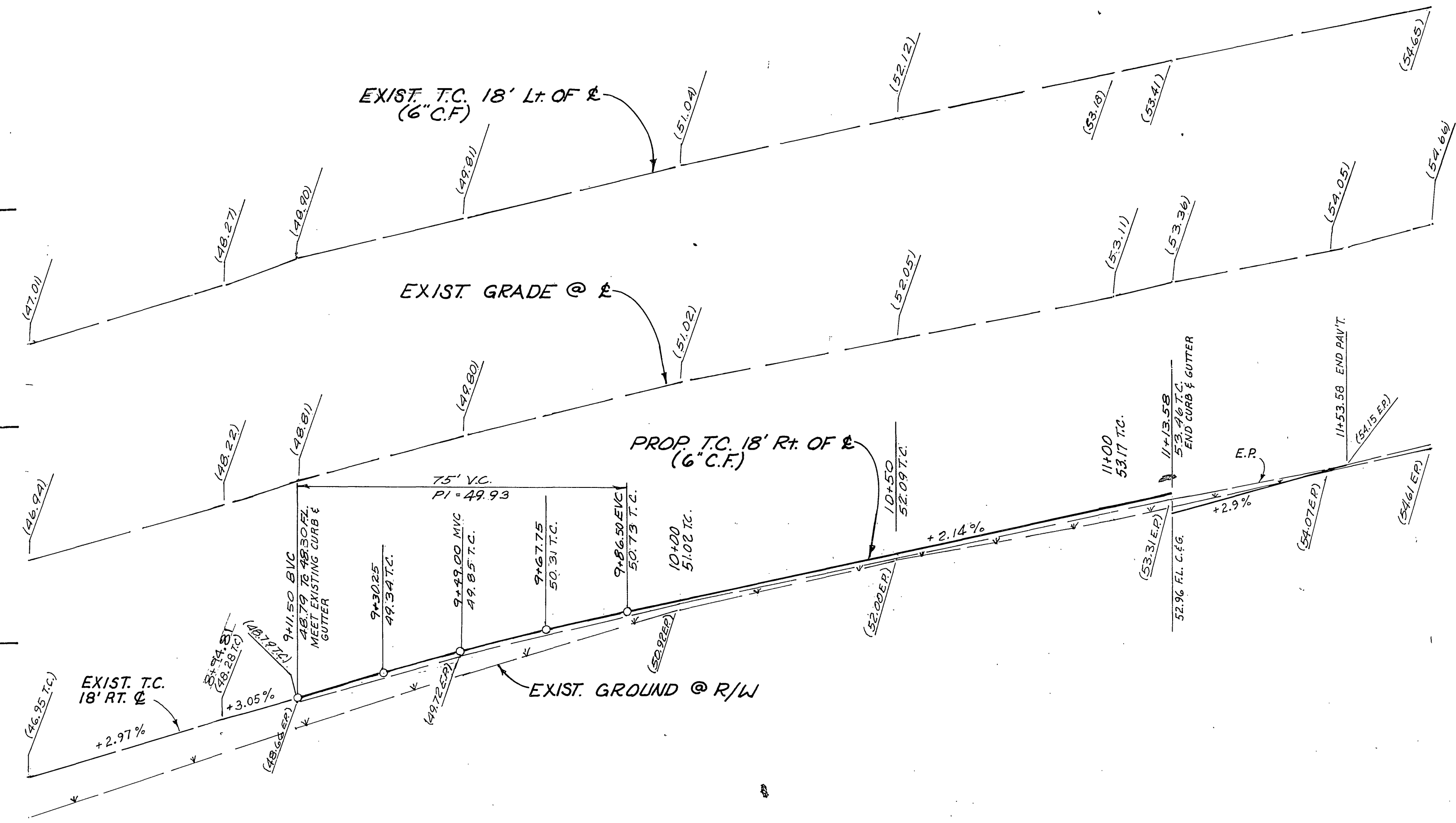
1155 E

1155 RT.

LT. 1150

E 1150

RT. 1150



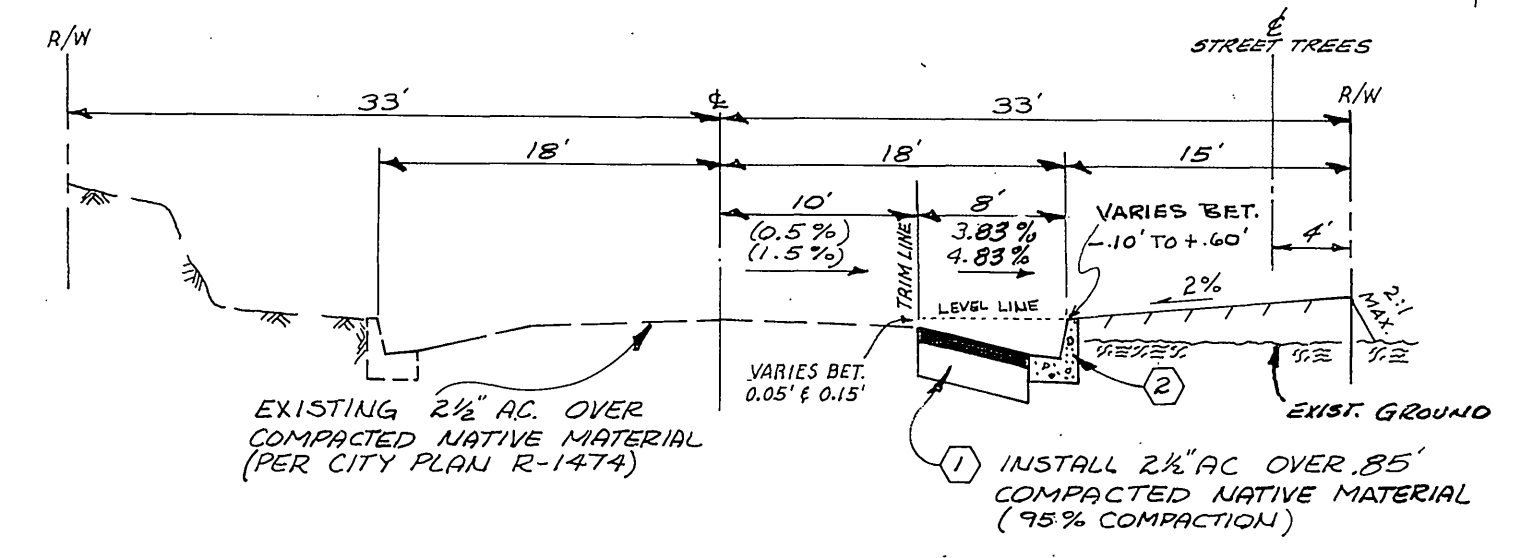
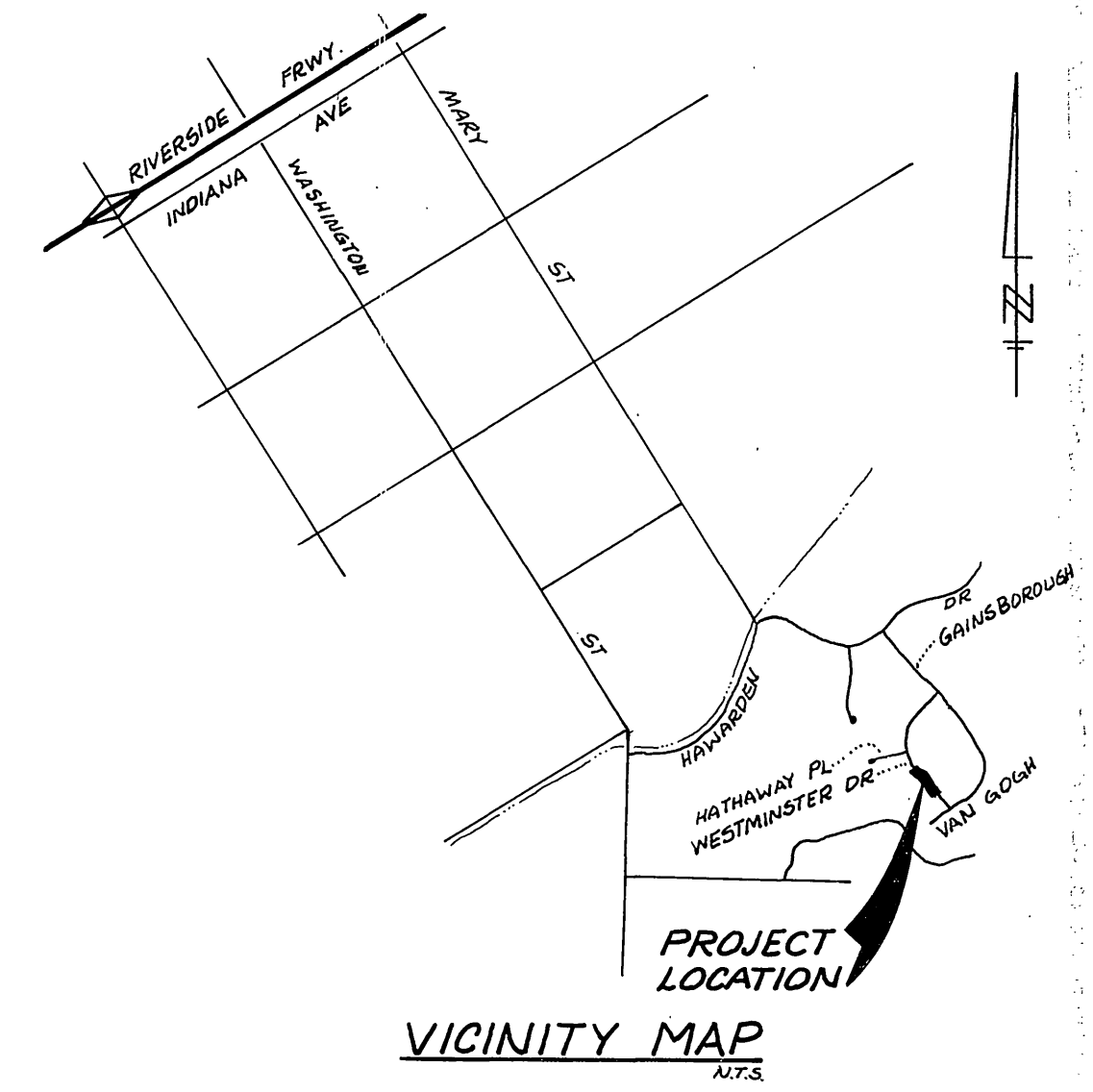
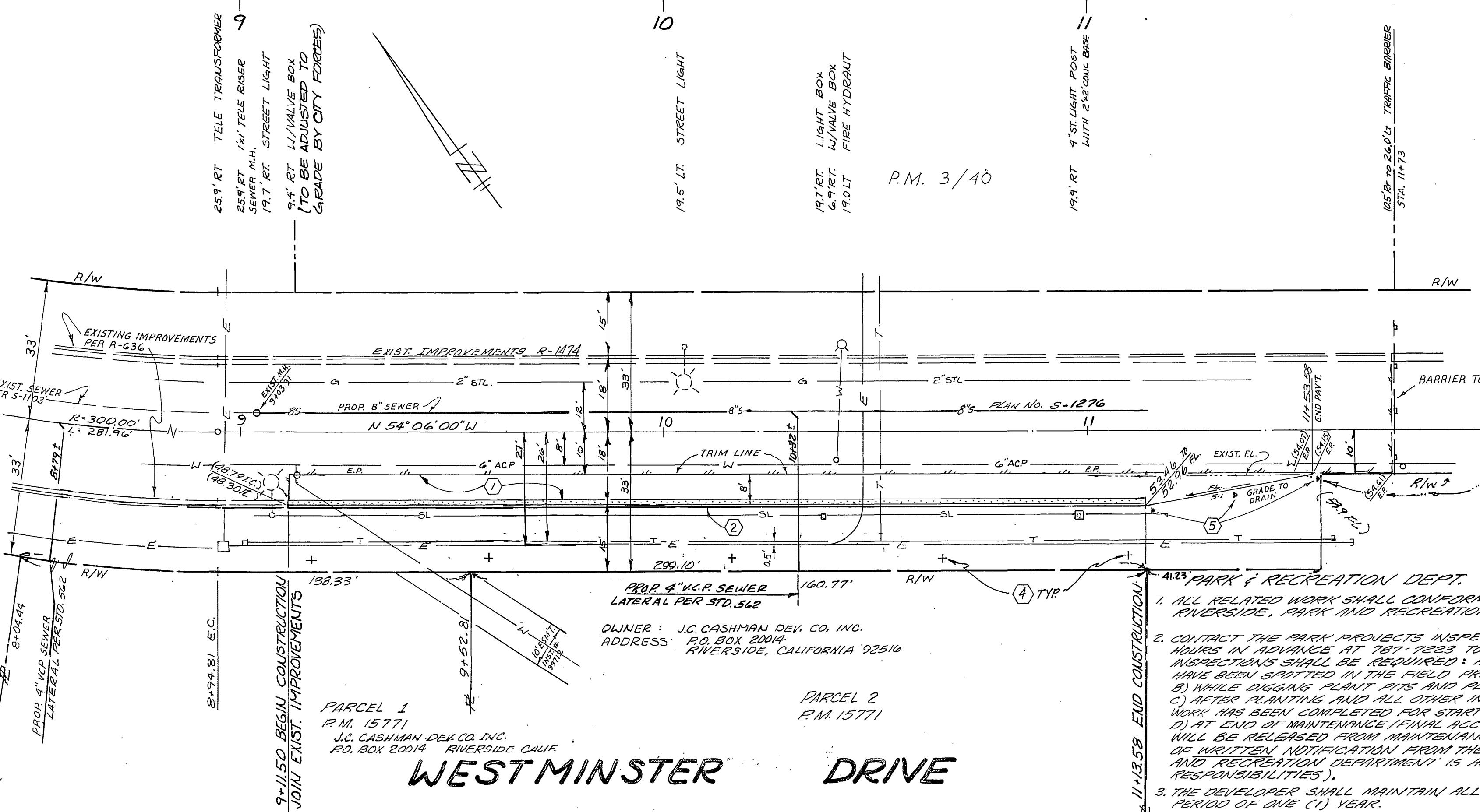
**CITY OF RIVERSIDE  
PUBLIC UTILITIES DEPT.  
ELECTRIC DIVISION**

LOCATIONS OF EXISTING STREET LIGHTING AND ELECTRIC FACILITIES SHOWN ON THE PLANS ARE APPROXIMATE ONLY

BEFORE EXCAVATING CALL  
714-787-7381 FOR FIELD LOCATION AND CONFIRMATION OF FACILITIES

**GENERAL NOTES:**

1. THE PRIVATE ENGINEER SIGNING THESE PLANS IS RESPONSIBLE FOR THE ACCURACY AND ACCEPTABILITY OF THE WORK HEREON, IN THE EVENT OF DISCREPANCIES ARISING DURING CONSTRUCTION, THE PRIVATE ENGINEER SIGNING THESE PLANS SHALL BE RESPONSIBLE FOR DETERMINING AN ACCEPTABLE SOLUTION AND REVISING THE PLANS FOR APPROVAL BY THE CITY.
2. CONSTRUCTION SHALL BE IN ACCORDANCE WITH THE STANDARD SPECIFICATIONS FOR PUBLIC WORKS CONSTRUCTION (1979 EDITION) AND THE CITY OF RIVERSIDE'S PUBLIC WORKS STANDARD DRAWINGS.
3. IT SHALL BE THE RESPONSIBILITY OF THE CONTRACTOR TO CLEAR THE RIGHT-OF-WAY IN ACCORDANCE WITH THE PROVISIONS OF LAW AS ITS AFFECTS EACH UTILITY INCLUDING IRRIGATION LINES AND APPURTENANCES, AND AT NO COST TO THE CITY.
4. TRIM EDGE OF EXISTING PAVEMENT WHERE NEW PAVING JOINS EXISTING PAVEMENT TO A CLEAR STRAIGHT LINE. CONSTRUCT MATCH-UP PAVING AS SHOWN AND OVERLAY PAVING AS DIRECTED IN THE FIELD TO PRODUCE A SMOOTH CROWN SECTION.
5. CURB & GUTTER SHALL BE STAKED WITH 3' OFFSETS AT 25' INTERVALS.
6. ALL FLAGGED ELEVATIONS SHALL BE STAKED IN THE FIELD BY THE PRIVATE ENGINEER.
7. SEWER LATERALS SHOWN ARE APPROXIMATE LOCATIONS. ACTUAL LOCATIONS SHALL BE DETERMINED IN THE FIELD DURING CONSTRUCTION.
8. NOTICE TO CONTRACTOR: THE EXISTENCE AND LOCATION OF ANY UNDERGROUND UTILITY PIPES OR STRUCTURES SHOWN ON THESE PLANS WERE OBTAINED BY A SEARCH OF THE AVAILABLE RECORDS. TO THE BEST OF OUR KNOWLEDGE THERE ARE NO EXISTING UTILITIES EXCEPT AS SHOWN ON THESE PLANS. THE CONTRACTOR IS REQUIRED TO TAKE DUE PRECAUTIONARY MEASURES TO PROTECT THE UTILITY LINES SHOWN AND OTHER LINES NOT SHOWN ON THESE PLANS.
9. PRIME COAT, SEAL COAT, AND PAINT BINDER ARE REQUIRED.
10. THE CONTRACTOR SHALL SET ALL UTILITY VAULTS & BOXES WITHIN THE LIMITS OF WORK TO GRADE.
11. DEVELOPER TO GIVE CITY WATER DIVISION FIVE (5) WORKING DAYS WRITTEN NOTICE PRIOR TO START OF CONSTRUCTION AND TO ALLOW CITY TEL (10) WORKING DAYS FOR COMPLETION OF WORK. (187-7611)
12. FUTURE DRIVEWAYS SHALL BE LOCATED IN THE FIELD AS APPROVED BY THE TRAFFIC ENGINEER.



**TYPICAL SECTION-WESTMINSTER DR.**  
T.I. = 5  
SCALE: HORIZ 1"=10'  
VERT 1"=3'

<b>SOUTHERN CALIF GAS CO.</b> APP'D BY: <i>[Signature]</i> 6-26-81 DATE:		<b>PACIFIC TELEPHONE</b> APP'D BY: <i>[Signature]</i> 6-23-81 DATE:	
<b>BENCH MARK</b> CITY BENCH MARK NO. FT-B GRASS DISK IN CONCRETE MON. ON ELY SIDE OF MUR- FIELD RD. 10 ELY OF RR (100 #1 AND 300 #1) C.F. 128°16'12" P.B. 847.18 ELEV. 1294.788		<b>HAWKINS, ROBERTSON &amp; ASSOCIATES</b> ENGINEERS - SURVEYORS 3756 ELIZABETH ST. RIVERSIDE CALIF APPROVED BY: <i>[Signature]</i> 5/10/81 R.C.E. No. 15016 DATE:	
CITY OF RIVERSIDE ELECTRICAL DIVISION APP'D BY: <i>[Signature]</i> 6-29-81 PEPPER UTILITIES ENGINEER ELECTRICAL		APPROVED BY: <i>[Signature]</i> 5/10/81 R.C.E. No. 15016 DATE:	

**CONSTRUCTION NOTES**

1. ALL RELATED WORK SHALL CONFORM TO THE CITY OF RIVERSIDE, PARK AND RECREATION DEPARTMENT STANDARDS.
2. CONTACT THE PARK PROJECTS INSPECTOR A MINIMUM OF 48 HOURS IN ADVANCE AT 787-7623 TO SCHEDULE INSPECTIONS. INSPECTIONS SHALL BE REQUIRED: A) WHEN PLANT LOCATIONS HAVE BEEN SPOTTED IN THE FIELD FROM THE DIGGING PLANT PITS; B) WHILE DIGGING PLANT PITS AND MAINTAINING PROTECTING TREES; C) AFTER PLANTING AND ALL OTHER INDICATED OR SPECIFIED WORK HAS BEEN COMPLETED FOR START OF MAINTENANCE, AND D) AT END OF MAINTENANCE (FINAL ACCEPTANCE). DEVELOPER WILL BE RELEASED FROM MAINTENANCE ONLY UPON RECEIPT OF WRITTEN NOTIFICATION FROM THE CITY THAT THE PARK AND RECREATION DEPARTMENT IS ASSUMING MAINTENANCE RESPONSIBILITIES.
3. THE DEVELOPER SHALL MAINTAIN ALL PLANTING FOR A MINIMUM PERIOD OF ONE (1) YEAR.
4. STREET TREE PLANTING SHALL BE AS FOLLOWS: 5" - 15 GAL. PINUS THUMBERS/ JAPANESE BLACK PINE AT APPROX. 50' S SPACING.

**CONSTRUCTION NOTES**

1. PLACE ASPHALTIC CONCRETE PAVEMENT OVER COMPACTED NATIVE MATERIAL PER TYPICAL DETAIL (LEFT)
2. CONST. CURB & GUTTER TYPE I (6" C.F.) PER CITY OF RIVERSIDE STD. PLAN NO. 200
3. CONST. RESIDENTIAL DRIVEWAY APPROACH PER CITY OF RIVERSIDE STD. 302 TYPE II
4. PLANT STREET TREES PER CITY OF RIVERSIDE PARK AND RECREATION DEPT. STANDARDS.
5. INSTALL 3 TYPE "L" MARKERS @ 20' O.C. PER STD. CG5.

\* As Shown 5-9-88 T.E.

**STREET IMPROVEMENT PLANS  
WESTMINSTER DRIVE**

FROM STA. 9+11.50 TO STA. 11+13.58  
(APPROX 240' SE. OF HATHAWAY)

PM 15,771

R-2390

2873-1