

CONSTRUCTED-IN-PLACE CONCRETE BLOCK MONUMENT SIGN

PART 1 - GENERAL

1.01 Related Documents:

The provisions of the "Standard Specifications for Public Works Construction, 1988 Edition" shall apply except as modified herein.

1.02 Scope:

Provide all constructed-in-place concrete block monument wall, complete in place, as indicated on the drawings, specified herein, and needed for a complete and proper installation to include:

- Monument sign wall and foundation; masonry wall foundations;
- Miscellaneous cast-in-place concrete foundations;
- All formwork placement and construction; reinforcing steel placement; form removal and backfill for above.

1.03 Qualifications of Installers:

Throughout the progress of installation of the work of this section, provide at least one person who shall be thoroughly familiar with the specified requirements, completely trained and experienced in the necessary skills, and who shall be present at the site and shall direct all work performed under this section.

Use adequate number of skilled workers to ensure installation in strict accordance with the approved design.

PART 2 - MATERIALS

2.01 General:

- All materials shall conform to the Standard Specifications.
- A. Portland Cement: Type I or II, low alkali. Only one brand of cement shall be used.
- B. Aggregates: Conform to Standard Specifications.
- C. Water shall be clean and free from deleterious materials.
- D. Curing compound: "Clear Seal" as manufactured by A. C. Horn, "Burke Cure Seal" as manufactured by Burke Concrete Accessories, Inc., or City approved equal.
- E. Form lumber shall be Douglas Fir, construction grade or better in accordance with the Standard Specifications.
- F. Expansion joint material shall be "Flexcell" as manufactured by Celotex Corporation conforming with ASTM Standard D1751-61, or City approved equal.
- G. Reinforcing steel shall be in accordance with the Standard Specifications.
- H. Concrete block and grout shall be in accordance with Specifications indicated.
- I. "Cultured Stone" shall be in accordance with Specifications indicated.

PART 3 - EXECUTION

3.01 General:

- A. Sequence of Work:
No work of this section shall commence prior to approval and acceptance of all fine grading work specified in the Standard Specifications.
- B. All work shall conform to the Standard Specifications except as modified herein.

3.02 Concrete Mix:

- A. The Contractor shall supply and pay all costs for concrete mix designs.
- B. In no case shall concrete contain less than 5 sacks of cement per cubic yard, or more than 7 gallons of water per sack of cement.
- C. Concrete mixes shall not use aggregate exceeding 1 inch maximum size.
- D. Concrete shall develop an ultimate compressive strength of 28 days as specified in the concrete Section of the Standard Specifications as designated for its intended use.
- E. Concrete block shall be grade "A" units ASTM C90-52.
- F. Grout shall be 1 part cement and 3 parts sand.

3.03 Tests and Inspection:

- A. The quality and quantity of materials used in the concrete shall be controlled at the batch plant by a Weighmaster.
- B. Contractor shall deliver two copies of each load ticket to the Park Projects Inspector.

3.04 Formwork:

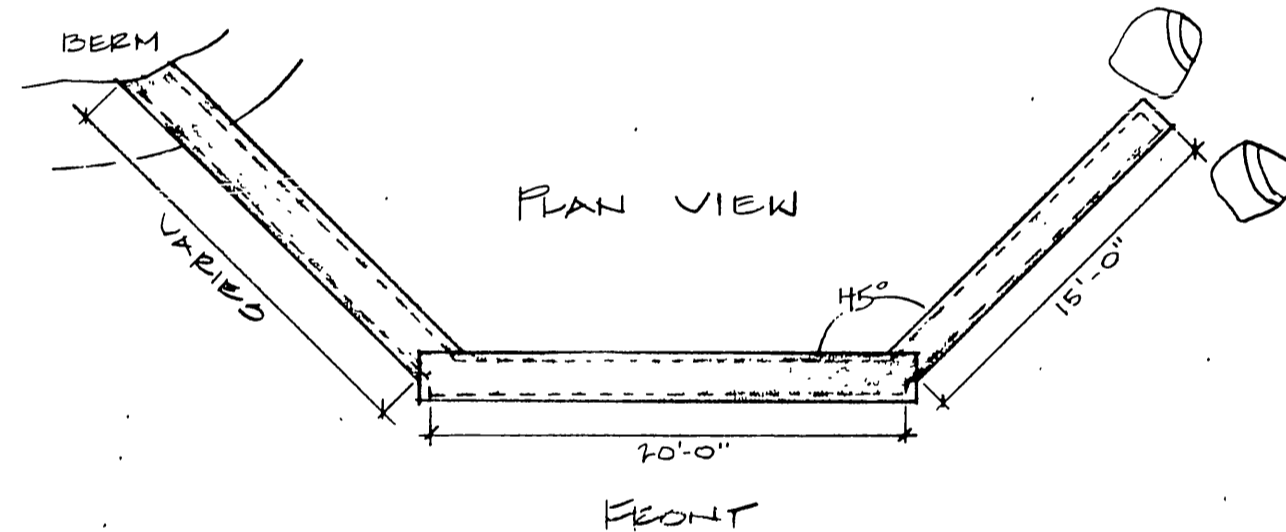
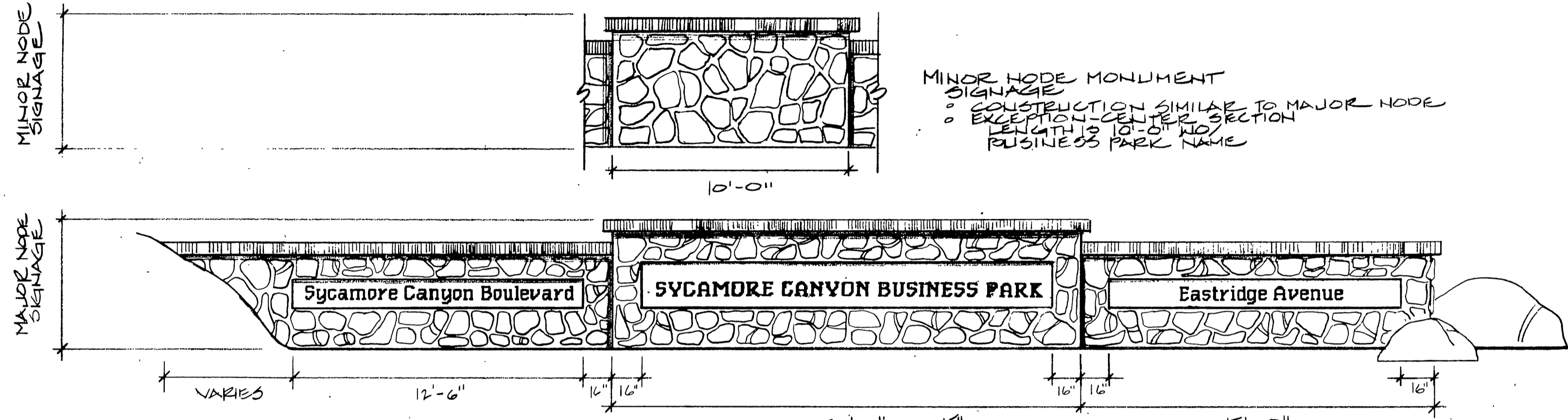
Forms shall be substantial, unyielding, true to line and grade, and shall be placed to conform with the dimensions for the work as indicated on the drawings.

3.05 Transportation and Placing Concrete:

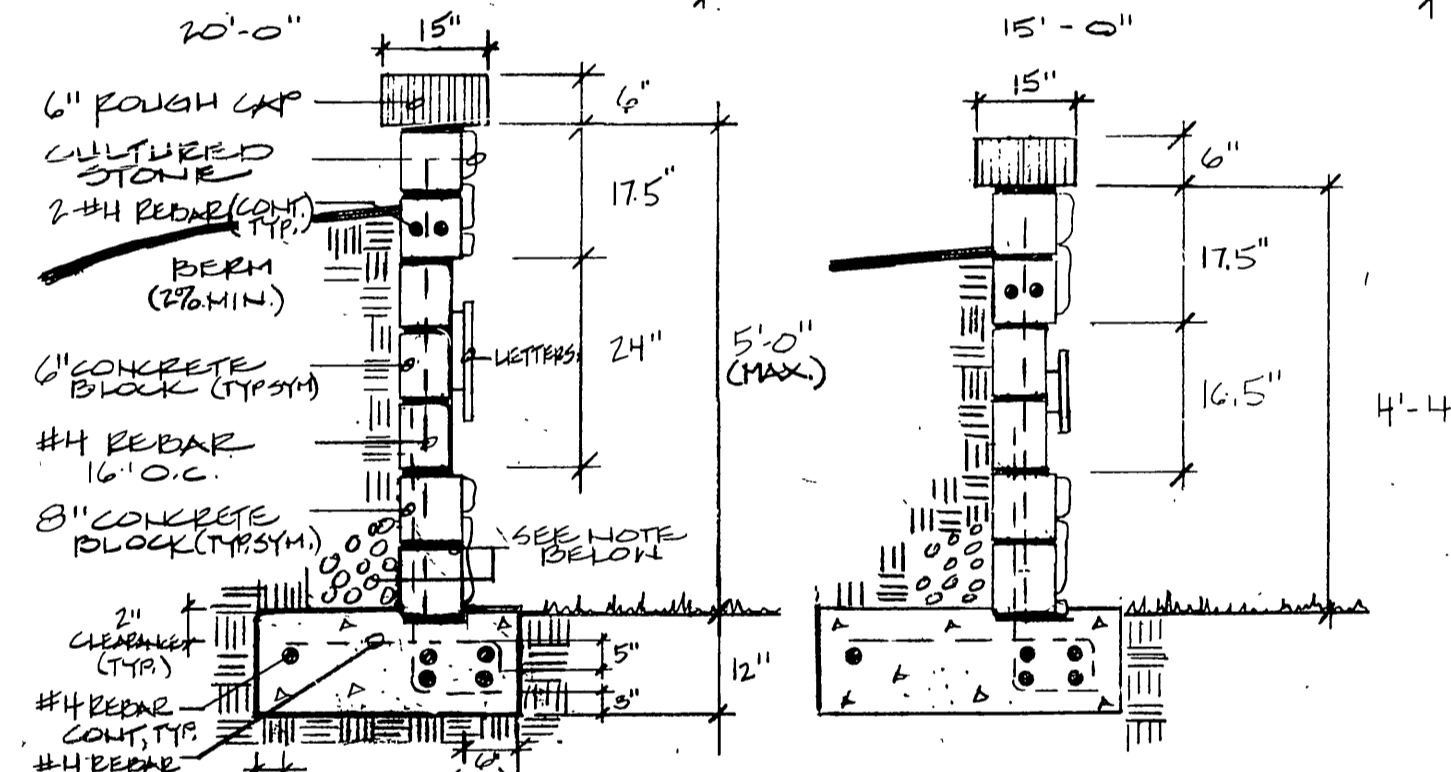
Responsibility for proper placing, compacting and finishing rests with the Contractor. Finished work showing voids and separation of aggregates will not be accepted.

3.06 Monument Sign Wall:

- A. Monument sign wall shall be constructed in place. Concrete to be minimum 2,000 p.s.i. at 28 days. All block cells to be filled with grout. Letters shall be raised aluminum letters in "Venice" typeface with matte black finish. A formal inspection of the letters to approve their arrangement, verify correct spellings and typeface is required prior to mounting.
- B. Concrete finish for indented sign wall area to be smooth plaster with a white grey finish to match lightest rock color.
- C. "Cultured Stone" facing shall be "Great Lakes Splitface" and shall be placed to manufactured specifications.
- D. Wall cap shall be poured-in-place or equivalent pre-made cap with a smooth top and sides formed with L. H. Scofield Lithotex Formliner #T-2150 (fractured finish grooved). Concrete to be batch mixed concrete with L. H. Scofield "Quarry Red" Chromix Admixture C-32.
- E. Grouted surfaces will not be accepted. The contractor shall provide watchmen as required to insure a graffiti-free surface. Patching of concrete surfaces will not be permitted. Whole sections must be removed and replaced.



- SYCAMORE CANYON BUSINESS PARK
 - CONCRETE BLOCK W/ CULTURED STONE FINISH - GREAT LAKES SPLITFACE
 - INDENTED SIGNAGE AREA W/ SMOOTH PLASTER (WHITE GRAY TO MATCH LIGHTEST ROCK COLOR)
 - RAISED ALUMINUM LETTERS W/ MATTE BLACK FINISH
 - TYPE FACE (LETTERING) - VENICE
 - POURED-IN-PLACE CONCRETE CAP - SMOOTH TOP SLOPE FORMED BY LITHOTEX (FRACTURED FIN. LITHOTEX) BATCH MIXED CONCRETE W/ L. H. SCOFIELD QUARRY RED CHROMIX ADMIXTURE C-32
 - * OR EQUIVALENT PRE-MADE CAP



NOTES: CHUTE HEAD JOINT IN FIRST COURSE 3" O.C. BACKFILL W/ 10" OF 3/4" GRAVEL TO DRAIN

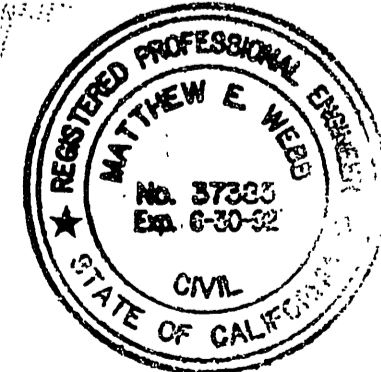
NOTE: FOR WING WALL CALL OUTS, SEE CENTER WALL

FOR INFORMATION NOT SHOWN SEE DETAIL AT RIGHT.

CENTER WALL 20'-0"

WING WALL 15'-0"

NTS



A. JAMES MONTGOMERY AND ASSOCIATES, INC.
 LANDSCAPE ARCHITECTS
 4515 Central Avenue, Suite 204
 Riverside, California

ALBERT A. WEBB ASSOCIATES
 CIVIL ENGINEERS
 RIVERSIDE, CALIFORNIA

APPROVED BY *Matthew E. Webb* DATE 3/8/90
 R.E. No. 37385

| | | |
|-------------|-----------|------------|
| MARK | REVISIONS | APPR. DATE |
| | | |
| DESIGNED BY | DRAWN BY | CHECKED BY |
| | | |

CITY OF RIVERSIDE, CALIFORNIA
 PUBLIC WORKS DEPARTMENT

APPROVED BY *[Signature]* DATE *3/6/90*
 PRINCIPAL ENGINEER
 PARK DEPARTMENT
 DIRECTOR OF PUBLIC WORKS

Parkway Landscape Design
 Sycamore Canyon Business Park
 Riverside, California

SIGNAGE

SCALE: NTS

ACCOUNT No. 9653
 DRAWING NUMBER
R-3028-A
 SHEET C-1 OF C-1
 89-3009 NB

RETAINING WALLS

ADAPTED FROM CONCRETE MASONRY ASSOCIATION AND DEPT. OF BUILDING SAFETY, COUNTY OF RIVERSIDE

WATER CAP OR CAPSTONE IF SPECIFIED
 (5) #4 BARS
 CONCRETE MASONRY WALL ALL CELLS FILLED SOLID WITH GROUT
 DWMT HEAD JOINT W/ FINISH CONCRETE AT JOINT FOR WEAP WALL
 4#4 BARS
 FOOTING AGAINST UNDISTURBED NATURAL SOIL OR COMPACTED GRAVEL BASE
 TYPICAL SECTION 5'-0" MAX.

MAXIMUM STRESSES
 f_c = 15,000 p.s.i.
 f_t = 200 p.s.i.
 TENSILE σ = 100 p.s.i.
 BOND U = 100 p.s.i.
 SOIL PRESSURE = 100 LB/FT² AT 10 FT
 CONCRETE BLOCK GRADE UNIT = 2.1 TO 2.5
 ABOUT 1 PART CEMENT 3 PARTS SAND

NOTE: ASSUMED THAT THERE IS NO SURCHARGE ON WALL ABOVE AT 50% MINIMUM ABOVE AND BELOW WALL FOR CONCRETE IN FOOTING TO TEST 2,000 PSI PER 10 INCH AT 28 DAYS

Approved: *[Signature]* Date: 3/6/90 City Engineer

RETAINING WALL
 CITY OF RIVERSIDE, CALIFORNIA
 DEPT. OF PUBLIC WORKS
 STANDARD DRAWING NO. 707

SCALE: 1/4" = 1'-0"