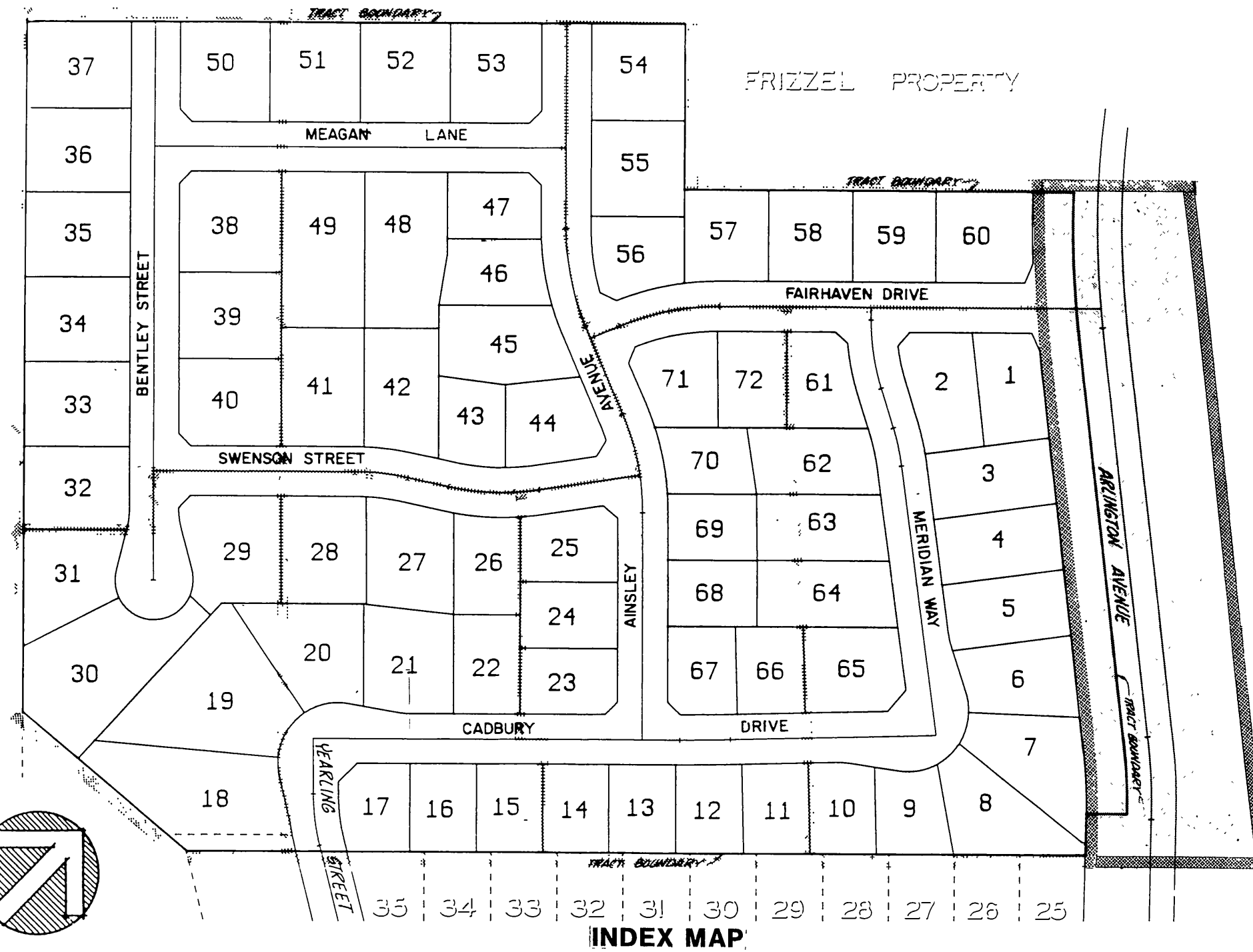
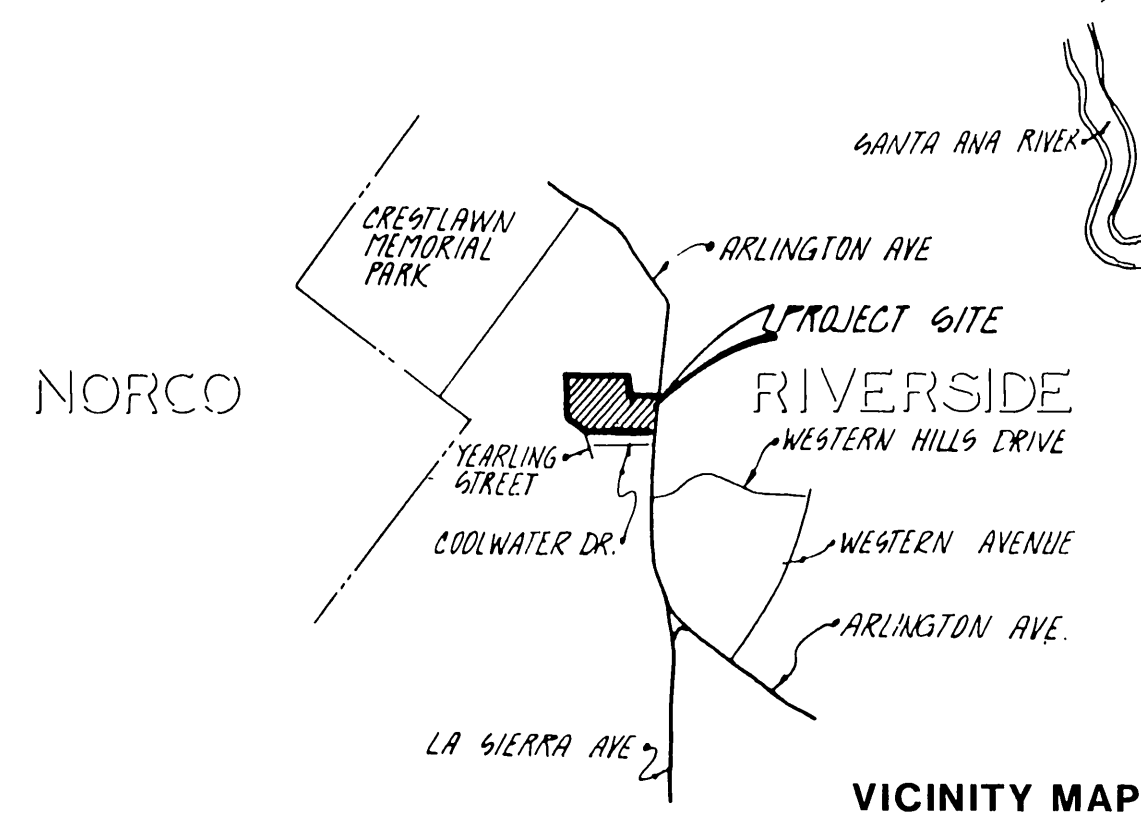


PREMIER HOMES AT LA SIERRA

ARLINGTON AVENUE
(REVERSE FRONTAGE)

PREMIER HOMES

1787 POMONA ROAD, SUITE K,
CORONA, CALIFORNIA 91720
(714) 272-8111



REVERSE FRONTAGE

GENERAL NOTES FOR PLAN CHECK

- ALL RELATED WORK SHALL CONFORM TO THE CITY OF RIVERSIDE PARK AND RECREATION DEPARTMENT STANDARDS.
- CONTACT THE PARK PROJECTS INSPECTOR A MINIMUM OF 48 HOURS IN ADVANCE AT (714) 782-5223 TO SCHEDULE INSPECTION. INSPECTIONS SHALL BE REQUIRED:
 - PRIOR TO THE INSTALLATION OF IRRIGATION LINES OR COMPONENTS.
 - PRIOR TO INSTALLATION OF HARDSCAPE.
 - WHEN PLANT LOCATIONS HAVE BEEN SPOTTED IN THE FIELD PRIOR TO DIGGING PLANT PITS.
 - WHILE DIGGING PLANT PITS AND PLANTING/RELOCATING TREES.
 - AFTER PLANTING AND ALL OTHER INDICATED OR SPECIFIED WORK HAS BEEN COMPLETED FOR START OF MAINTENANCE.
 - AT END OF MAINTENANCE/FINAL ACCEPTANCE (CONTRACTOR/DEVELOPER WILL BE RELEASED FROM MAINTENANCE ONLY UPON RECEIPT OF WRITTEN NOTIFICATION FROM THE CITY THAT THE PARK AND RECREATION DEPARTMENT IS ASSUMING MAINTENANCE RESPONSIBILITIES.
- THE CONTRACTOR/DEVELOPER SHALL MAINTAIN ALL PLANTINGS FOR A MINIMUM PERIOD OF TWO (2) YEARS

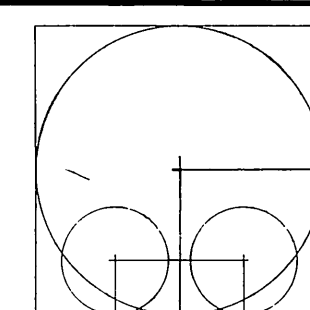
NOTE:

- ALL WIRES UNDER CONCRETE SHALL BE SLEEVED PER CITY OF RIVERSIDE, PARK AND RECREATION DEPARTMENT STANDARDS.
- ALL PIPING UNDER CONCRETE SHALL BE SEPARATELY SLEEVED PER CITY OF RIVERSIDE PARK AND RECREATION DEPARTMENT STANDARDS.
- ALL LANDSCAPE AND IRRIGATION WORK SHALL BE OBSERVED AND INSPECTED BY THE LANDSCAPE ARCHITECT AND THE PARK AND RECREATION DEPARTMENT. UPON COMPLETION OF THE PROJECT THE LANDSCAPE ARCHITECT SHALL CERTIFY THAT THE WORK HAS BEEN COMPLETED IN ACCORDANCE WITH THE APPROVED PLANS. CONTACT THE PARK AND RECREATION DEPARTMENT PRIOR TO COMMENCING WORK.
- FOR REVERSE FRONTAGE WALL CONSTRUCTION AND PLACEMENT DETAILS, SEE APPROVED STREET IMPROVEMENT PLANS.

SHEET INDEX

SHEET	TITLE
T-1	TITLE SHEET
L-1	IRRIGATION (OVERHEAD)
L-2	IRRIGATION (DRIP)
L-3	PLANTING
L-4	IRRIGATION SPECIFICATIONS
L-5	PLANTING SPECIFICATIONS
L-6	IRRIGATION & PLANTING DETAILS

APPROVED BY:	DATE:
PUBLIC UTILITIES WATER <i>Robert S. Dyer for P.O.C. 6/21/89</i>	
PUBLIC UTILITIES ELECTRIC <i>W. W. W. for P.O.C. 6/21/89</i>	
WESTERN MUNICIPAL WATER DISTRICT <i>N/A</i>	
PLANNING DEPT. <i>Carol M. Dyer</i>	
PARK and RECREATION DEPARTMENT	



ROBERT MITCHELL & ASSOCIATES
LANDSCAPE ARCHITECTURE
22982 EL TORO ROAD, SUITE B, EL TORO, CALIFORNIA 92630
(714) 581-2112

ENGINEER CHANGE TO WALL	10/24/89
MARK	REVISIONS
DESIGNED BY	DRAWN BY JUN
CHECKED BY RAM	

CITY OF RIVERSIDE PUBLIC WORKS DEPARTMENT			
APPROVED BY	DATE	BY	APPROVED BY
PRINCIPAL ENGINEER	6-22-89	CIS	<i>Ray Bol</i>
PARK DEPARTMENT			PUBLIC WORKS DIRECTOR
TRAFFIC DIVISION			
CHIEF P. W. ENGINEER	6-22-89	WLA	DATE 6/21/89

TITLE SHEET
PREMIER HOMES AT LA SIERRA
TRACT 22759
PREMIER HOMES
1787 POMONA ROAD, SUITE K, CORONA, CALIFORNIA 91720
(714) 272-8111

ACCOUNT NO.	R-3029 L
SHEET	T-1 OF 7
JOB NO.	256

PC 2641