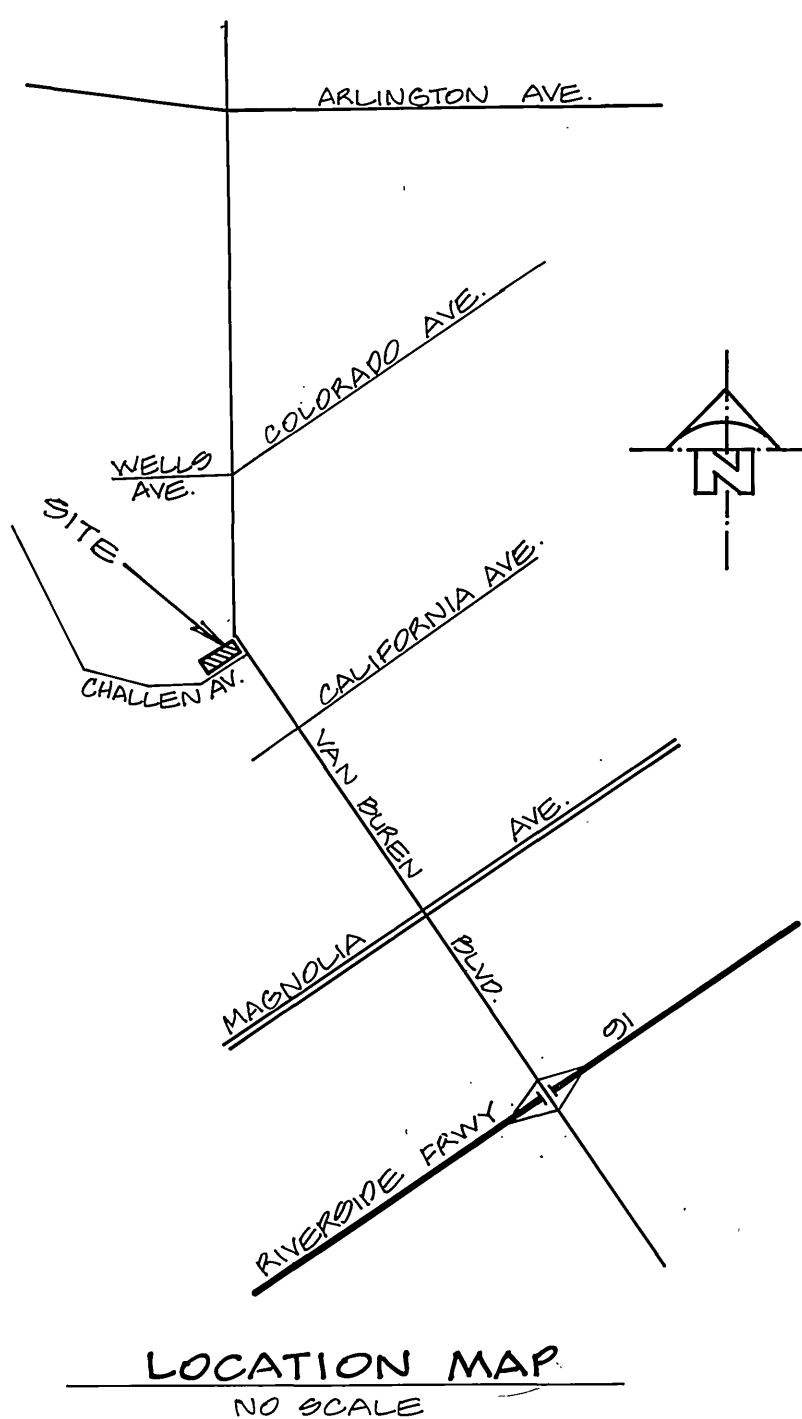


GENERAL NOTES

- IT SHALL BE THE RESPONSIBILITY OF THE CONTRACTOR TO CLEAR THE RIGHT OF WAY IN ACCORDANCE WITH THE PROVISIONS OF LAW AS IT AFFECTS EACH UTILITY INCLUDING IRRIGATION LINES AND APPURTENANCES AND AT NO COST TO THE CITY.
- CONSTRUCTION SHALL BE IN ACCORDANCE WITH THE CITY OF RIVERSIDE DEPARTMENT OF PUBLIC WORKS, STANDARD DRAWINGS, STANDARD DRAWING NO. 40 AND THE STANDARD SPECIFICATIONS FOR PUBLIC WORKS CONSTRUCTION, CURRENT EDITION.
- THE PRIVATE ENGINEER SIGNING THESE PLANS IS RESPONSIBLE FOR ASSURING THE ACCURACY AND ACCEPTABILITY OF THE WORK HEREON IN THE EVENT OF DISCREPANCIES ARISING DURING CONSTRUCTION, THE PRIVATE ENGINEER SHALL BE RESPONSIBLE FOR DETERMINING AN ACCEPTABLE SOLUTION AND REVISING THE PLANS FOR APPROVAL BY THE CITY.
- THE DEVELOPER SHALL BE RESPONSIBLE FOR PRESERVING OR REESTABLISHING AND REFERENCING SURVEY MONUMENTS DESTROYED, DISTURBED OR BURIED AS A RESULT OF CONSTRUCTION SHOWN HEREON.
- SEE "STREET LIGHTING PLANS" FOR QUANTITY AND LOCATION OF REQUIRED STREET LIGHTS.
- ALL FLAGGED ELEVATIONS SHALL BE STAKED IN THE FIELD BY THE PRIVATE ENGINEER.
- THE CONTRACTOR SHALL CALL IN A LOCATION REQUEST TO UNDERGROUND SERVICE ALERT (USA), PHONE NO. 1-800-422-4133, TWO WORKING DAYS BEFORE DIGGING. NO CONSTRUCTION PERMIT WILL BE ISSUED BY THE PUBLIC WORKS DEPARTMENT INVOLVING EXCAVATION FOR UNDERGROUND FACILITIES UNLESS THE APPLICANT HAS BEEN PROVIDED AN INQUIRY IDENTIFICATION NUMBER BY U.S.A.
- ALL TRAFFIC SIGNS SHALL BE INSTALLED PRIOR TO OPENING THE STREETS TO TRAFFIC.
- ANY TRAFFIC CONTROL STRIPING OBLITERATED AND/OR BADLY WORN DURING CONSTRUCTION SHALL BE RESTORED BY THE CONTRACTOR WITHIN FIVE DAYS AFTER NOTIFICATION FROM THE CITY INSPECTORS.
- FINAL STRIPING FOR TRAFFIC CONTROL AND/OR PAVEMENT MARKING TO BE THE RESPONSIBILITY OF THE DEVELOPER.
- TRIM EDGE OF EXISTING PAVEMENT WHERE NEW PAVEMENT JOINS TO A SMOOTH, STRAIGHT LINE. CONSTRUCT MATCH-UP PAVING AS SHOWN ON PLAN AND OVERLAY PAVING AS DIRECTED IN FIELD TO PRODUCE A SMOOTH SECTION.
- STREET IMPROVEMENT WORK THAT WILL CAUSE DAMAGE TO THE DETECTOR LOOP(S) SHALL NOT BE PERFORMED UNTIL TRAFFIC SIGNAL MAINTENANCE PERSONNEL HAVE BEEN NOTIFIED AND THE NECESSARY TIMING ADJUSTMENTS MADE TO MAINTAIN SIGNAL OPERATION.
- STREET OPENING PERMIT FOR CONSTRUCTION AND/OR MODIFICATION OF TRAFFIC SIGNAL FACILITIES IS REQUIRED.
- DEVELOPER TO GIVE CITY WATER DIVISION FIVE (5) WORKING DAYS WRITTEN NOTICE PRIOR TO START OF CONSTRUCTION AND TO ALLOW CITY TEN (10) WORKING DAYS FOR COMPLETION OF WORK. (351-6150)
- SIZE AND LOCATION OF FUTURE DRIVEWAY APPROACHES SHALL BE AS APPROVED BY THE TRAFFIC ENGINEER.



PARK DEPARTMENT NOTES

- ALL RELATED WORK SHALL CONFORM TO THE CITY OF RIVERSIDE PARK AND RECREATION DEPARTMENT STANDARDS.
- CONTACT THE STREET TREE INSPECTOR A MINIMUM OF 48 HOURS IN ADVANCE AT 351-6126 TO SCHEDULE INSPECTIONS. INSPECTIONS SHALL BE REQUIRED:
 - WHEN PLANT LOCATIONS HAVE BEEN SPOTTED IN THE FIELD PRIOR TO DIGGING PLANT PITS.
 - WHILE DIGGING PLANT PITS AND PLANTING/RELOCATING TREES.
 - AFTER PLANTING AND ALL OTHER INDICATED OR SPECIFIED WORK HAS BEEN COMPLETED FOR START OF MAINTENANCE.
 - AT END OF MAINTENANCE/FINAL ACCEPTANCE (CONTRACTOR/DEVELOPER WILL BE RELEASED FROM MAINTENANCE ONLY UPON RECEIPT OF WRITTEN NOTIFICATION FROM THE CITY THAT THE PARK AND RECREATION DEPARTMENT IS ASSUMING MAINTENANCE RESPONSIBILITIES).
- THE CONTRACTOR/DEVELOPER SHALL MAINTAIN ALL PLANTINGS FOR A MINIMUM PERIOD OF ONE (1) YEAR.
- PARK AND RECREATION DEPARTMENT AND PUBLIC WORKS DEPARTMENT PERMITS ARE REQUIRED PRIOR TO COMMENCEMENT OF TREE RELOCATION AND/OR REMOVAL WORK. FOR ALL TREES WITHIN THE ULTIMATE PAVEMENT AREA, BACKFILL OF ALL HOLES IS TO BE INSPECTED BY THE CITY FOR PROPER COMPACTION.
- STREET TREE PLANTING SHALL BE AS FOLLOWS:

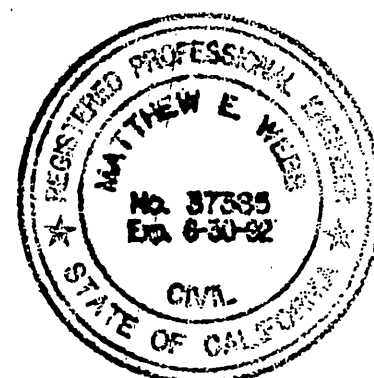
STREET NAME	BOTANICAL NAME/ COMMON NAME	MIN. SIZE	APPROX. SPACING	NO. REQ'D
CHALLENGER AVE.	PRUNUS CERASIFERA KRAUTER VESUVIUS/ RED LEAF PLUM	10 CAL.	45'	10

NOTICE TO CONTRACTOR

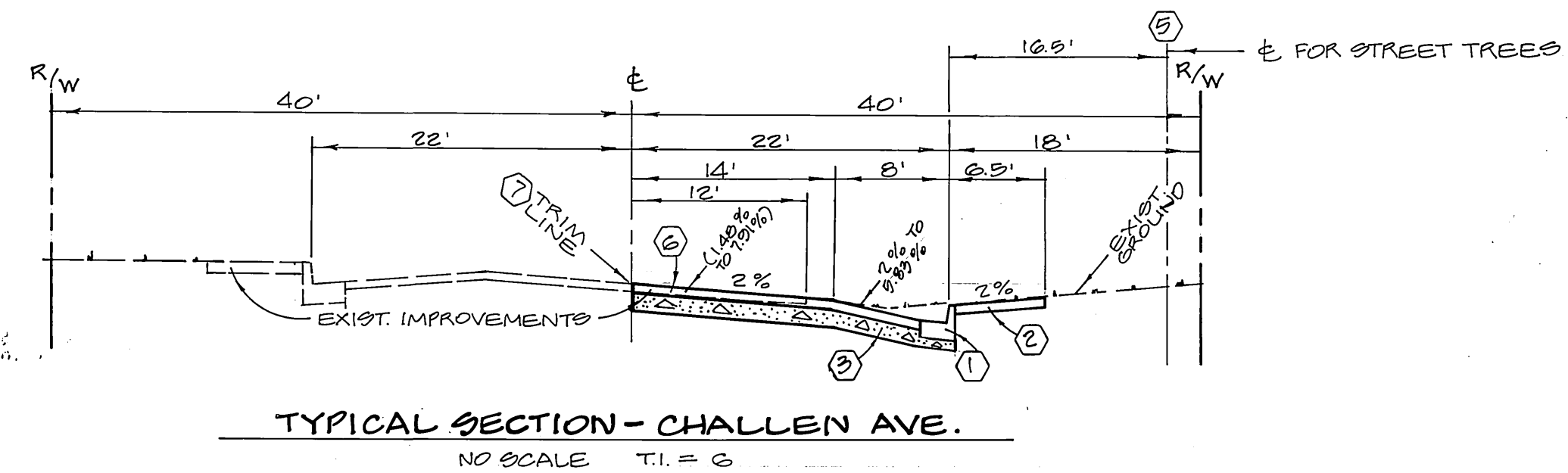
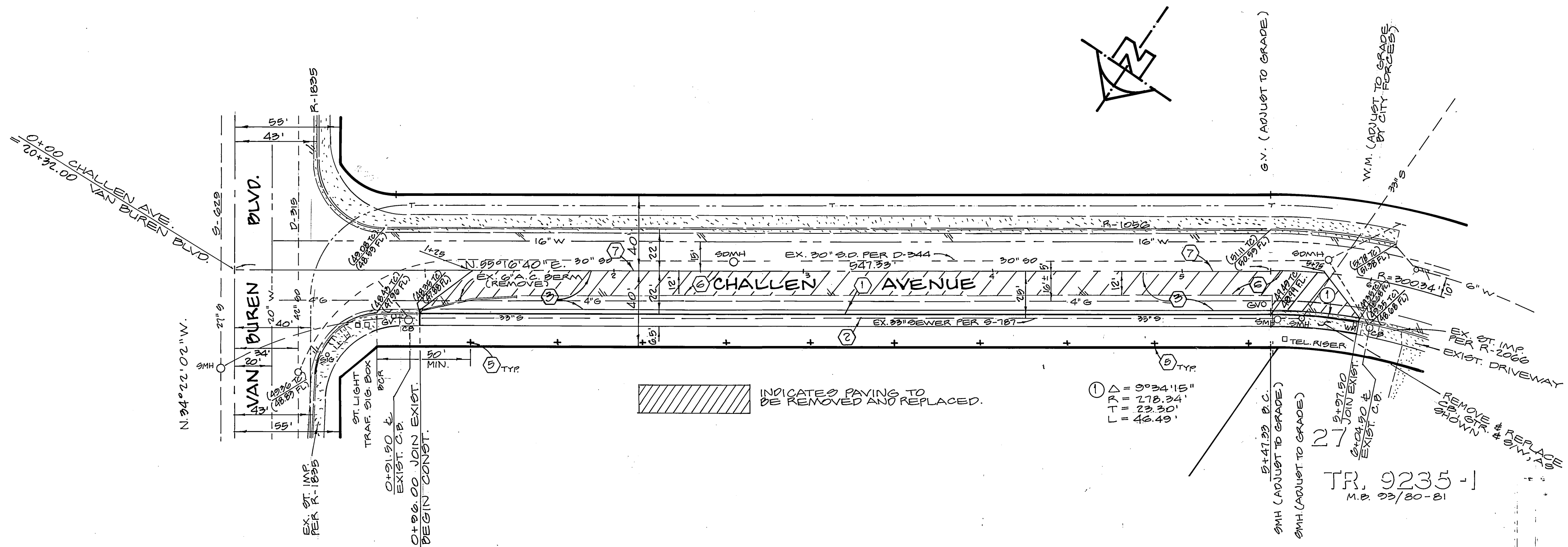
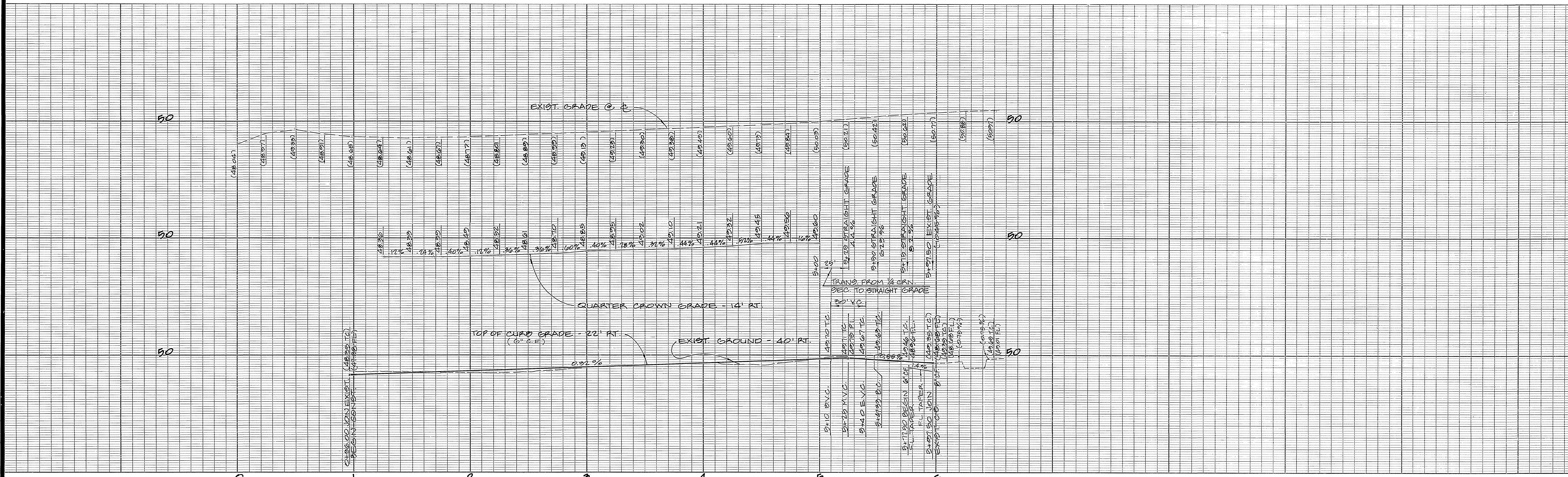
- THE EXISTENCE AND LOCATION OF ANY UNDERGROUND UTILITY PIPES OR STRUCTURES SHOWN ON THESE PLANS ARE OBTAINED BY A SEARCH OF THE AVAILABLE RECORDS. TO THE BEST OF OUR KNOWLEDGE, THERE ARE NO EXISTING UTILITIES EXCEPT THOSE SHOWN ON THESE PLANS.
- THE CONTRACTOR IS REQUIRED TO TAKE DUE PRECAUTIONARY MEASURES TO PROTECT THE UTILITY LINES SHOWN AND ANY OTHER LINES NOT OF RECORD OR NOT SHOWN ON THESE PLANS.
- CALL UNDERGROUND SERVICE ALERT (U.S.A.) 1-800-422-4133 AT LEAST 48 HOURS PRIOR TO EXCAVATION.

BENCH MARK:

63-A (RESET) CHISEL "X" ON S.W. BOLT OF TRAFFIC SIGNAL ON THE N.E. CORNER OF VAN DUREN BLVD. AT WELLS AVE. F.O. 1028/1 EL. 742.211



ALBERT A. WEBB ASSOCIATES CIVIL ENGINEERS RIVERSIDE, CALIFORNIA 3708 MCCRAY ST. (714) 686-1070 APPROVED BY <u>Matthew E. Webb</u> DATE <u>8/30/88</u> R.E. No. <u>37393</u>		CITY OF RIVERSIDE, CALIFORNIA PUBLIC WORKS DEPARTMENT APPROVED BY <u>[Signature]</u> DATE <u>6/14/89</u> PRINCIPAL ENGINEER PARK DEPARTMENT TRAFFIC DIVISION CHIEF PUB. WKS. ENGR.		STREET IMPROVEMENT PLAN AND PROFILE Z.C. R-13-823 INDEX MAP CHALLENGER AVENUE DATE <u>6/14/89</u>		ACCOUNT No. DRAWING NUMBER R-3039 SHEET <u>1</u> OF <u>2</u> 82-101 A
W.O. 82-101 FOR WILLIAM J. TEUNISSEN, F.B.		DESIGNED BY <u>AVG</u> DRAWN BY <u>AVG</u> CHECKED BY <u>MEWN</u>				



SEE SHEET ONE FOR GENERAL AND CONSTRUCTION NOTES.

SOUTHERN CALIFORNIA GAS COMPANY APPROVED BY: <i>Robert St. John</i> DATE: <i>3/5/89</i>		PACIFIC BELL APPROVED BY: <i>B. J. Jorgensen</i> DATE: <i>2/23/89</i>		CITY OF RIVERSIDE WATER SYSTEM APPROVED BY: <i>Richard J. Dinkel</i> DATE: <i>3-15-89</i>		ALBERT A. WEBB ASSOCIATES CIVIL ENGINEERS RIVERSIDE, CALIFORNIA 3780 MCCRAY ST. (714) 686-1070 APPROVED BY: <i>Matthew E. Webb</i> DATE: <i>3/30/88</i> R.E. No. 37388 W.O. 82-101 FOR WILLIAM J. TEUNISSEN F.B.		CITY OF RIVERSIDE, CALIFORNIA PUBLIC WORKS DEPARTMENT APPROVED BY: <i>Barry Bell</i> DATE: <i>6/14/89</i> PRINCIPAL ENGINEER PARK DEPARTMENT TRAFFIC DIVISION CHIEF PUB. WKS. ENGR.		STREET IMPROVEMENT PLAN AND PROFILE Z.C. R-13-823 CHALLENGER AVENUE STA. 0+00 TO STA. 0+97.90 SCALE: HORIZ. 1"=40' VERT. 1"=4' INDEXED 8-10-89		ACCOUNT No. DRAWING NUMBER R-3039 SHEET 2 OF 2 82-101 A	
---	--	---	--	---	--	---	--	---	--	--	--	--	--