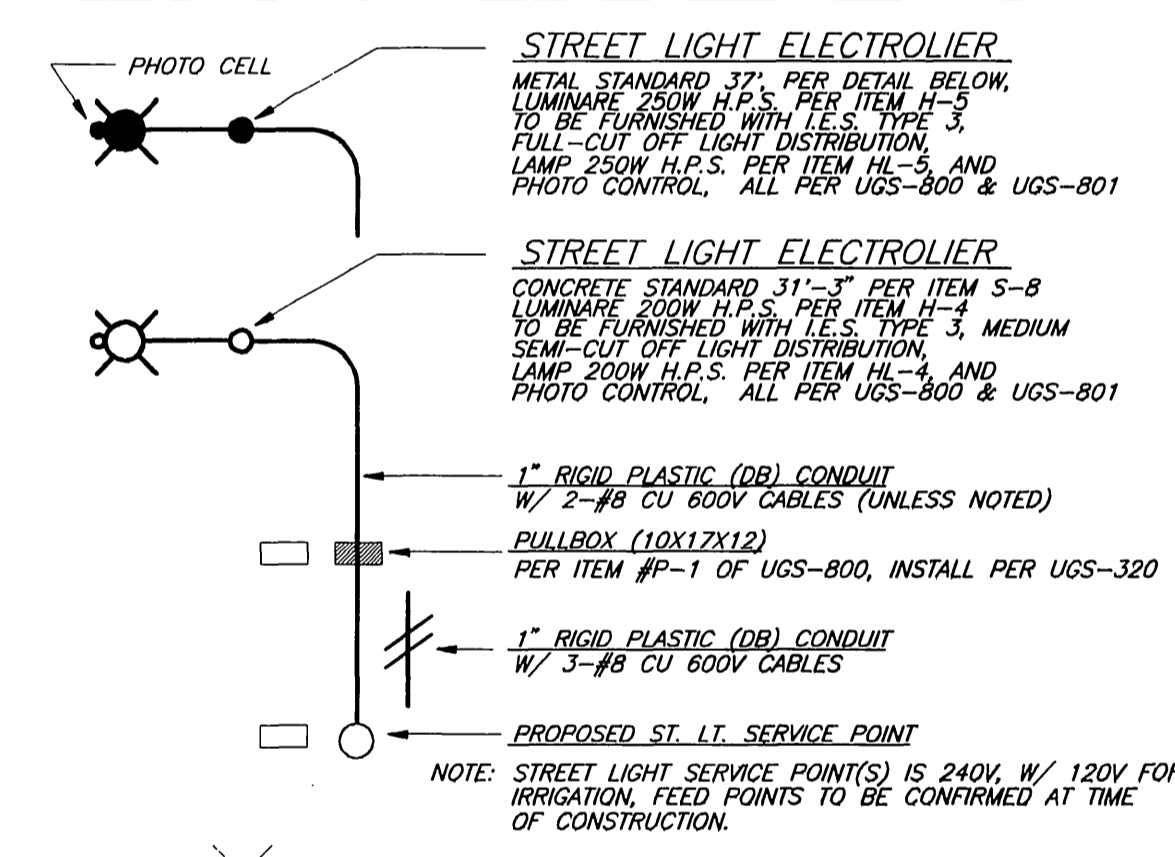


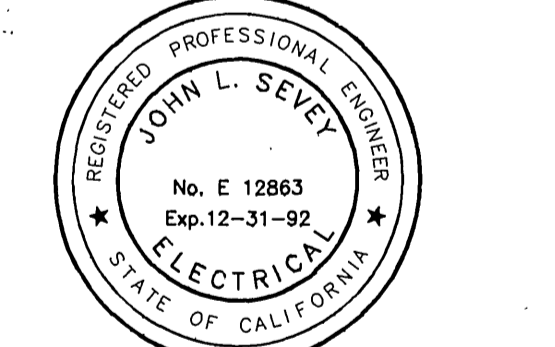
**GENERAL CONSTRUCTION NOTES**

1. INSTALL ALL STREET LIGHT FACILITIES AS SHOWN IN CONFORMANCE WITH STANDARD DWG. UGS-800 AND STREET LIGHT SPECIFICATION 119.
2. EXCAVATION FOR POWER SUBSTRUCTURES, CONDUITS AND ELECTROLIER FOUNDATIONS MUST BE DONE AFTER INSTALLATION OF CURBS AND GUTTER, BUT BEFORE INSTALLATION OF CURB RETURNS WITH SPANDRELS, CROSS GUTTERS, SIDEWALKS, AND DRIVE APRONS.
3. INSTALL A WATERPROOF "IN-LINE" FUSE HOLDER ON THE PHASE LEG CONDUCTOR(S) IN THE BASE OF EACH STREET LIGHT STANDARD OR ADJACENT PULLBOX. FUSE HOLDER TO BE "BUSSMAN TRON" #HEB, COMPATIBLE WITH SIZE & TYPE OF WIRE, WITH A BUSSMAN FNM 10 AMP 250V. FUSE OR APPROVED EQUAL.
4. MARK INSTALLATION DATE ON PHOTO CONTROLS AND LAMPS AS PROVIDED FOR BY MANUFACTURERS.
5. ACQUIRE A STREET OPENING PERMIT PRIOR TO EXCAVATING IN STREET RIGHT OF WAY.
6. CONTACT PUBLIC UTILITIES STREET LIGHT INSPECTOR FOR REQUIRED INSPECTIONS. (782-5429)
7. ALL STREET LIGHT FEED POINTS TO BE CONNECTED BY THE PUBLIC UTILITIES DEPT. AND ENERGIZED WHEN CLEARED BY DEPT. INSPECTOR.

**STREET LIGHT LEGEND**



48 HOURS BEFORE YOU DIG CALL  
UNDERGROUND SERVICE ALERT  
1-800-422-4133



John L. Sevey  
5-7-92

UNION METAL CORP. CAT. # 203-11-090-370-1-BG  
OR APPROVED EQUAL

RELATED DWG. NO. R-3057  
RELATED W.O. NO. 7455

STREET LIGHTING FOR <b>PENNSYLVANIA AVE.</b> CHICAGO AVE. TO CANYON CREST DR.		DRAWN <i>db</i>	CITY OF RIVERSIDE DEPARTMENT OF PUBLIC UTILITIES
SCALE 1" = 100'	DATE 05-05-92		
INVT. MAP 9-30, 31, 32	BOARD DATE	ASBUILT	SHEET 1 OF 1

ACCT. NO. 510-764200-470607-1069-06373

File w/ R-3057 INDEXED 7-7-94