

GENERAL NOTES

1. NO PERSON SHALL PERFORM ANY CONSTRUCTION ACTIVITY OR INSTALL ANY OBJECTS WITHIN THE PUBLIC RIGHT-OF-WAY OR EASEMENTS OF THE CITY OF RIVERSIDE WITHOUT A VALID CONSTRUCTION PERMIT OR, A STREET OPENING PERMIT OR AN ENCROACHMENT PERMIT ISSUED BY THE CITY'S PUBLIC WORKS DEPARTMENT.
2. IT SHALL BE THE RESPONSIBILITY OF THE CONTRACTOR TO CLEAR THE RIGHT OF WAY IN ACCORDANCE WITH THE PROVISIONS OF LAW AS IT AFFECTS EACH UTILITY INCLUDING IRRIGATION LINES AND APPURTENANCES AND AT NO COST TO THE CITY.
3. CONSTRUCTION SHALL BE IN ACCORDANCE WITH THE CITY OF RIVERSIDE DEPARTMENT OF PUBLIC WORKS, STANDARD DRAWINGS, ITS SUPPLEMENTAL NOTES AND THE STANDARD SPECIFICATIONS FOR PUBLIC WORKS CONSTRUCTION, CURRENT EDITION.
4. THE PRIVATE ENGINEER SIGNING THESE PLANS IS RESPONSIBLE FOR ASSURING THE ACCURACY AND ACCEPTABILITY OF WORK HEREON. IN THE EVENT OF DISCREPANCIES ARISING DURING CONSTRUCTION, THE PRIVATE ENGINEER SHALL BE RESPONSIBLE FOR DETERMINING AN ACCEPTABLE SOLUTION AND REVISING THE PLANS FOR APPROVAL BY THE CITY.
5. QUANTITIES SHOWN ARE FOR INFORMATION ONLY AND THE CITY OF RIVERSIDE IS NOT RESPONSIBLE FOR THEIR ACCURACY.
6. THE DEVELOPER SHALL BE RESPONSIBLE FOR PRESERVING OR REESTABLISHING AND REFERENCING SURVEY MONUMENTS DESTROYED, DISTURBED OR BURIED AS A RESULT OF CONSTRUCTION SHOWN HEREON.
7. ALL FLAGGED ELEVATIONS SHALL BE STAKED IN THE FIELD BY THE PRIVATE ENGINEER.
8. WHERE NEW PAVEMENT IS TO JOIN THE EXISTING PAVEMENT, THE EDGE OF THE EXISTING PAVEMENT SHALL BE TRIMMED IN A SMOOTH AND STRAIGHT LINE. CONSTRUCT MATCH-UP PAVING AS SHOWN ON THE PLANS AND OVERLAY PAVING AS DIRECTED IN THE FIELD TO PRODUCE A SMOOTH SECTION.
9. ALL TRAFFIC SIGNS SHALL BE INSTALLED PRIOR TO OPENING THE STREETS TO TRAFFIC.
10. ALL OVERHANGING TREE LIMBS THAT ARE LESS THAN 14' ABOVE THE STREET GRADE SHALL BE TRIMMED BACK.
11. ON ALL AREAS WITHIN PUBLIC RIGHT OF WAY WHERE THE FILL IS ONE (1) FOOT OR GREATER, A LETTER WILL BE REQUIRED FROM THE SOILS ENGINEER, CERTIFYING THE COMPACTION OF THE FILL BELOW SUB GRADE, PRIOR TO ISSUANCE OF THE CONSTRUCTION PERMIT/CUT SHEETS.
12. ANY TRAFFIC CONTROL STRIPING OBLITERATED AND/OR BADLY WORN DURING CONSTRUCTION SHALL BE RESTORED BY THE CONTRACTOR WITHIN FIVE DAYS AFTER NOTIFICATION FROM THE CITY INSPECTORS.
13. FINAL STRIPING FOR TRAFFIC CONTROL AND/OR PAVEMENT MARKING TO BE THE RESPONSIBILITY OF THE DEVELOPER.
14. THE CONTRACTOR SHALL CALL IN A LOCATION REQUEST TO UNDERGROUND SERVICE ALERT (USA), PHONE # 1-800-227-2600, TWO WORKING DAYS BEFORE DIGGING. NO CONSTRUCTION PERMIT WILL BE ISSUED BY THE PUBLIC WORKS DEPARTMENT INVOLVING EXCAVATION FOR UNDERGROUND FACILITIES UNLESS THE APPLICANT HAS BEEN PROVIDED AN INQUIRY IDENTIFICATION NUMBER BY U.S.A.
15. IN PAVEMENT OVERLAY AREAS, ANY DISTRESSED EXISTING PAVEMENT SHALL BE REMOVED AND REPLACED AS DIRECTED BY THE INSPECTOR PRIOR TO OVERLAYING WITH A.C. PAVING.
16. THE CONTRACTOR SHALL COORDINATE TRENCHING FOR CABLE TELEVISION WITH OTHER TRENCHING WITHIN THE PROJECT.
17. NO FINISH FLOOR ELEVATION SHALL BE LESS THAN 6" ABOVE THE UPPER MANHOLE RIM ELEVATION OF THE SEWER LINE SEGMENT BEING CONNECTED TO, WITHOUT HAVING A PROPER BACKWATER VALVE INSTALLED IN THE LATERAL.

GENERAL NOTES FOR STREET TREE PLANTING AND RELOCATION.

1. ALL RELATED WORK SHALL CONFORM TO THE CITY OF RIVERSIDE PARK AND RECREATION DEPARTMENT STANDARDS AND CITY OF RIVERSIDE STREET TREE POLICIES.
2. WHEN CALLING FOR INSPECTIONS CONTACT THE STREET TREE INSPECTOR A MINIMUM OF 48 HOURS IN ADVANCE AT (714) 351-6126 TO SCHEDULE AN INSPECTION. A FIELD NOTICE WILL BE ISSUED AS WRITTEN APPROVAL FOR EACH STAGE OF INSPECTION. A VERBAL APPROVAL WILL NOT BE ACCEPTABLE. INSPECTIONS ARE REQUIRED:

- A. AFTER COMPLETION OF FINAL GRADING OF THE LOTS AND WHEN ALL UTILITY SERVICES AND SEWER LATERAL HAVE BEEN MARKED, BUT PRIOR TO DIGGING PLANT PITS, ALL FINAL STREET TREE LOCATIONS ARE TO BE SPOTTED IN THE FIELD BY THE STREET TREE INSPECTOR.
- B. WHILE DIGGING PLANT PITS AND PLANTING/RELOCATING TREES:
- C. AFTER PLANTING AND ALL OTHER INDICATED OR SPECIFIED WORK HAS BEEN COMPLETED, FOR START OF MAINTENANCE;
- D. AT THE END OF THE MAINTENANCE PERIOD, THE CONTRACTOR/DEVELOPER SHALL CALL THE STREET TREE INSPECTOR AT (714) 351-6126 FOR A FINAL ACCEPTANCE INSPECTION IN ORDER TO BE RELEASED FROM MAINTENANCE. DEVELOPERS BONDS WILL NOT BE RELEASED UNTIL AFTER RECEIPT OF WRITTEN NOTIFICATION FROM THE CITY THAT THE TREES PASS FINAL INSPECTION AND THE PARK AND RECREATION DEPARTMENT IS ASSUMING MAINTENANCE RESPONSIBILITIES;

3. ALL STREET TREES ARE TO BE PLANTED PRIOR TO OCCUPANCY.

4. THE DEVELOPER SHALL BE RESPONSIBLE TO ACCEPTABLY MAINTAIN ALL PLANTINGS FOR A MINIMUM PERIOD OF ONE (1) YEAR.

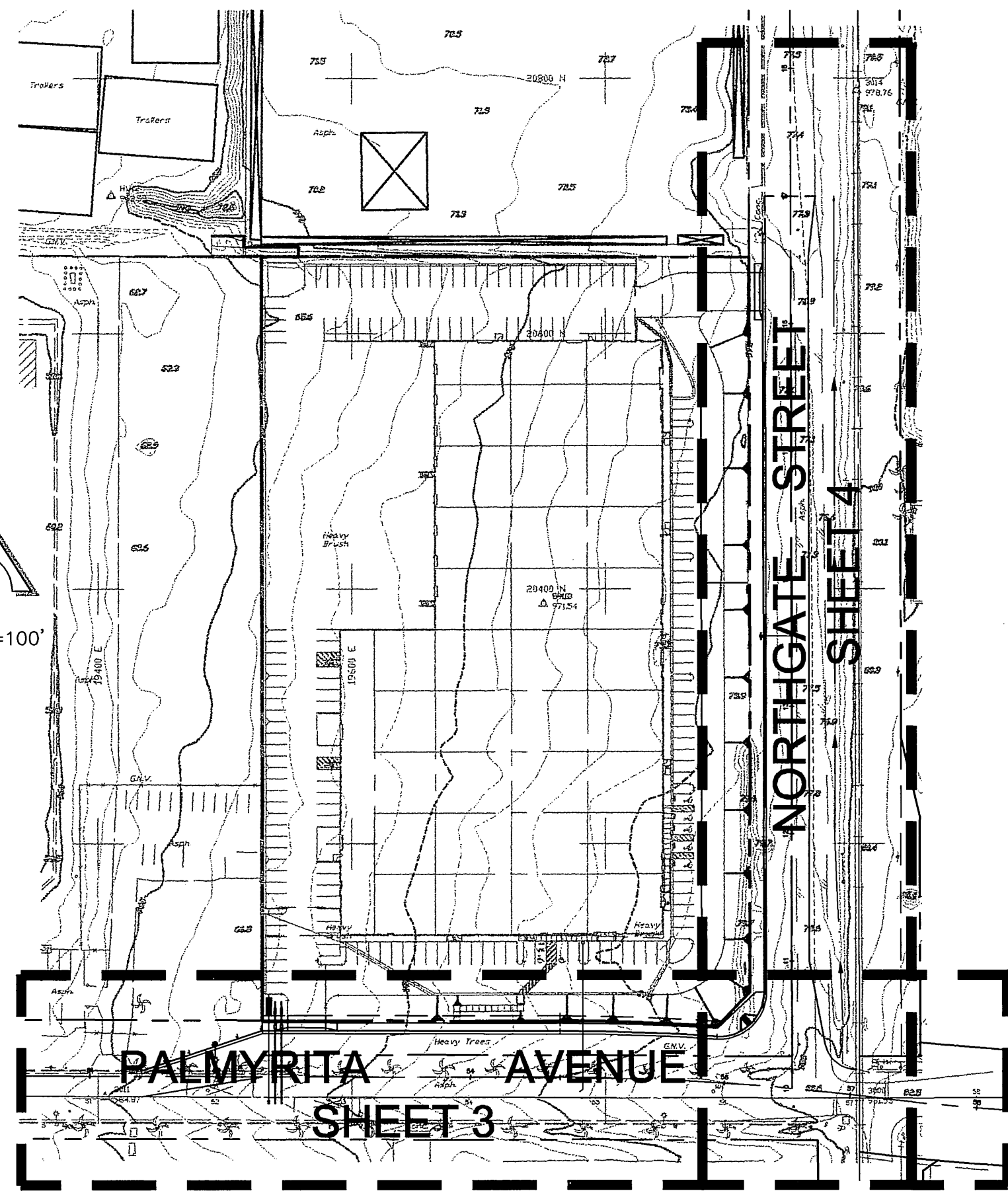
5. STREET TREES PLANTING SHALL BE AS FOLLOWS:

STREET NAME	BOTANICAL NAME/COMMON NAME	APPROX. SPACING	NO REQUIRED	MIN. SIZE
PALMYRITA AVE.	WASHINGTONIA FILIFERA/CALIFORNIA FAN PALM	40' O.C.	13 EXIST. (RELOCATE)	(30" TRUNK)
NORTHGATE ST.	CINNAMOMUM CAMPHORA/CAMPHOR	45' O.C.	12 EACH	MIN. 15 GAL.

6. A STREET OPENING PERMIT AS ISSUED BY THE PUBLIC WORKS DEPARTMENT REQUIRED PRIOR TO COMMENCEMENT OF TREE WORK.

7. ALL STREET TREES MUST BE AUTOMATICALLY IRRIGATED.

*NOTE: IN THE INTEREST OF PUBLIC SAFETY AND MAINTENANCE THE STREET TREE INSPECTOR SHALL HAVE THE AUTHORITY TO REVISE THE STREET TREE QUANTITIES AND LOCATIONS SHOWN ON APPROVED PLANS BASED UPON FIELD CONDITIONS FOUND AT THE TIME OF INSTALLATION OF THE TREES.



CITY OF RIVERSIDE PUBLIC UTILITIES, ELECTRIC NOTE:

OVERHEAD POWER POLE AND FACILITIES SHALL BE RELOCATED BY THE CITY OF RIVERSIDE AT DEVELOPERS EXPENSE. CONTACT RIVERSIDE PUBLIC UTILITIES 90 DAYS IN ADVANCE OF CONSTRUCTION FOR RELOCATION OF OVERHEAD POWER POLE FACILITIES.

CONTRACTOR IS RESPONSIBLE FOR INSTALLATION OF STREET LIGHTS AND UNDERGROUND ELECTRIC UTILITY FACILITIES. CONTACT RIVERSIDE PUBLIC UTILITIES 60 DAYS IN ADVANCE OF CONSTRUCTION FOR APPROVED STREET LIGHT AND ELECTRIC PLANS.

CONTACT: BILL MAINORD
PH. NO. (909) 826-5393
3900 MAIN ST., 4TH FLOOR
RIVERSIDE CA. 92522

PAVING LEGEND

	A.C. PAVEMENT
	A.C. REMOVAL
	A.C. OVERLAY

LEGEND

	POWER POLE
	STREET LIGHT
	FIRE HYDRANT
	TREE
	BUSHES
	WALL - BLOCK OR CONCRETE
TC	TOP OF CURB
FL	FLOW LINE
PL	PROPERTY LINE
RW	RIGHT-OF-WAY
EP	EDGE OF PAVEMENT
C&G	CURB & GUTTER
TP	TOP OF PAVEMENT
SW	SIDEWALK
CL	CENTERLINE
DW	DRIVEWAY
PP	POWER POLE
FH	FIRE HYDRANT
TC	TOP OF CURB

TRAFFIC AND STREET NAME SIGN SCHEDULE		
		BLOCK NO.
31	PALMYRITA AVENUE	900
	NORTHGATE STREET	1000
50	R-1 STOP SIGN	N/A

WATER DEPARTMENT NOTE:

DEVELOPER TO GIVE CITY WATER DIVISION FIVE (5) WORKING DAYS WRITTEN NOTICE PRIOR TO START OF CONSTRUCTION AND TO ALLOW CITY TEN (10) WORKING DAYS FOR COMPLETION OF WORK.

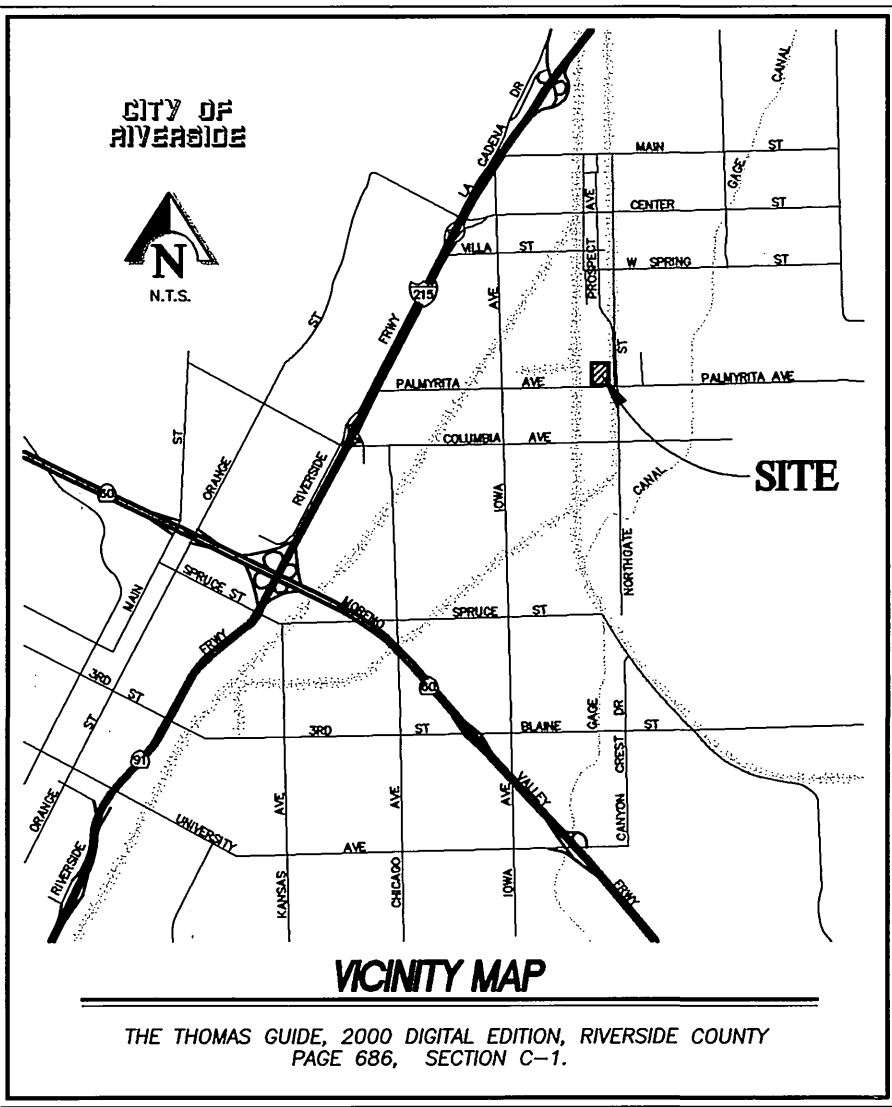
(909) 351-6368

CONSTRUCTION NOTES

1	PLACE .4 " A.C. PAVING OVER .8 " CLASS II AGG. BASE PER S.R. 1592 R= .77	23,680 S.F.
2	PLACE .4 " A.C. PAVING OVER .6 " CLASS II AGG. BASE PER S.R. 1592 R= .70	23,433 S.F.
3	CONSTRUCT VARIABLE THICKNESS A.C. OVERLAY.	841 S.F.
4	COLD PLANE EXISTING AC PAVEMENT MIN. 0.1' PRIOR TO PLACEMENT OF OVERLAY.	841 S.F.
5	CONSTRUCT TYPE I CONCRETE CURB AND GUTTER (6" C.F.) PER CITY OF RIVERSIDE STD. DWG. 200.	1123 L.F.
6	CONSTRUCT CONCRETE SIDEWALK PER CITY OF RIVERSIDE STD. DWG. 325.	2455 S.F.
7	CONSTRUCT CONCRETE DRIVEWAY APPROACH "TYPE CURB-I" PER CITY OF RIVERSIDE STD. DWG. 302 (SEE SHT. 2).	2 EA.
8	CONSTRUCT WHEELCHAIR RAMP (TYPE I) PER CITY OF RIVERSIDE STD. DWG. 304.	1 EA.
9	SAWCUT AND TRIM EDGE OF EXISTING PAVING FOR SMOOTH JOINT.	651 L.F.
10	REMOVE EXISTING A.C. PAVEMENT.	26,374 S.F.
11	REMOVE EXISTING CURB AND GUTTER.	95 L.F.
12	ADJUST MANHOLE TO FINISHED GRADE.	2 EA.
13	ADJUST WATER VALVE TO FINISHED GRADE (BY CITY FORCES).	5 EA.
14	RELOCATE EXISTING STREET LIGHT BEHIND NEW CURB, PER CITY OF RIVERSIDE PUBLIC UTILITIES DEPARTMENT PLANS AT OWNERS EXPENSE	1 EA.
15	RELOCATE EXISTING POWER POLE AND/OR GUY ANCHOR BEHIND NEW CURB, BY CITY OF RIVERSIDE PUBLIC UTILITIES DEPARTMENT AT OWNERS EXPENSE	3 EA.
16	EXISTING PALM TREE TO BE RELOCATED PER THE APPROVED LANDSCAPE PLAN.	13 EA.
17	NOTE NOT USED	
18	INSTALL NEW SUPER FIRE HYDRANT ASSEMBLY TO EXISTING 6" VALVE PER CITY OF RIVERSIDE STD. DWG. CWD-700. (BY CITY FORCES)	1 EA.
19	INSTALL 6" PVC SEWER LATERAL WITH CLEANOUT & BACKFLOW VALVE AT RIGHT-OF-WAY LINE PER CITY STD. DWG. 562A.	55 L.F.
20	INSTALL 2" DOMESTIC WATER SERVICE AND 2" METER WITH 2 1/2" BACK FLOW PREVENTER PER CITY OF RIVERSIDE STD. DWGS. CWD-601 & CWD-631. (2" W.S.L. & 2" W.M. BY CITY FORCES)	1 EA.
21	INSTALL 2" IRRIGATION WATER SERVICE AND 1 1/2" METER WITH 2" BACK FLOW PREVENTER PER CITY OF RIVERSIDE STD. DWGS. CWD-601 & CWD-631. (2" W.S.L. & 1 1/2" W.M. BY CITY FORCES)	1 EA.
22	INSTALL 12" FIRE SERVICE W/10" RPDA PER CITY OF RIVERSIDE STD. DWG. CWD-615 (BY CITY FORCES).	1 EA.
23	INSTALL 2" X 6" REDWOOD HEADER.	701 L.F.

SIGNING AND STRIPING

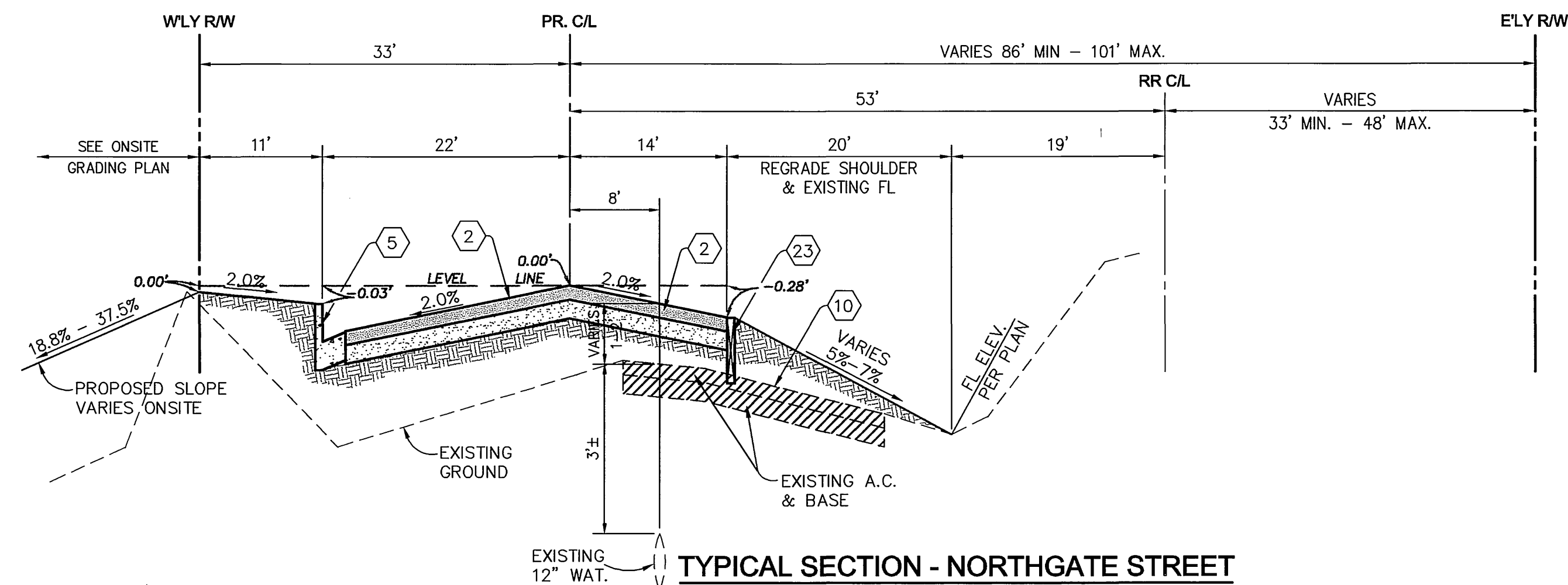
30	RELOCATE EXISTING "STOP" SIGN PER CITY OF RIVERSIDE STD. DWG. 666.	1 EA.
31	INSTALL STREET NAME SIGN PER CITY OF RIVERSIDE STD. DWG. 662A.	1 EA.
32	INSTALL TYPE F-1 DELINEATORS AT 20' O/C PER CITY OF RIVERSIDE STD. DWG. 665.	6 EA.
33	REMOVE AND REPLACE EXISTING SPEED LIMIT SIGN AS NECESSARY FOR GRADING.	1 EA.
34	EXISTING RAILROAD CROSSING SIGN (W47) TO BE REPLACED ON RELOCATED STREET LIGHT.	1 EA.
35	PLACE BLUE REFLECTIVE HYDRANT MARKER PER CITY OF RIVERSIDE STD. DWG. CWD-700.	4 EA.
36	PLACE 12" THERMOPLASTIC LIMIT LINE PER CALTRANS STD. DWG. A24E.	28 L.F.
37	PLACE THERMOPLASTIC "STOP" LEGEND PER CALTRANS STD. DWG. A24D.	22 S.F.
38	PLACE DOUBLE YELLOW THERMOPLASTIC LINES PER CALTRANS STD. DWG. A20A, DETAIL 21.	150 L.F.
39	PLACE 4" YELLOW CENTERLINE STRIPE PER CALTRANS STD. DWG. A20A, DETAIL 1.	1,125 L.F.
40	PLACE 4" WHITE TRANSITION/EDGE LINE STRIPE PER CALTRANS STD. DWG. A20B, DETAIL 27B.	602 L.F.
41	REMOVE EXISTING 4" WHITE TRANSITION/EDGE LINE STRIPE.	109 L.F.
42	PLACE TYPE V(R) ARROW PER CALTRANS STD. DWG. A24A.	84 S.F.
43	EXISTING DOUBLE LIMIT LINE TO BE REPLACED AFTER PAVING HAS BEEN COMPLETED PER CALTRANS STD. DWG. A24E & CALTRANS TRAFFIC MANUAL FIG. 6-40.	27 L.F.
44	EXISTING RAILROAD CROSSING SYMBOL TO BE REPLACED AFTER PAVING HAS BEEN COMPLETED PER CALTRANS STD. DWG. A24C & CALTRANS TRAFFIC MANUAL FIG. 6-40.	236 S.F.



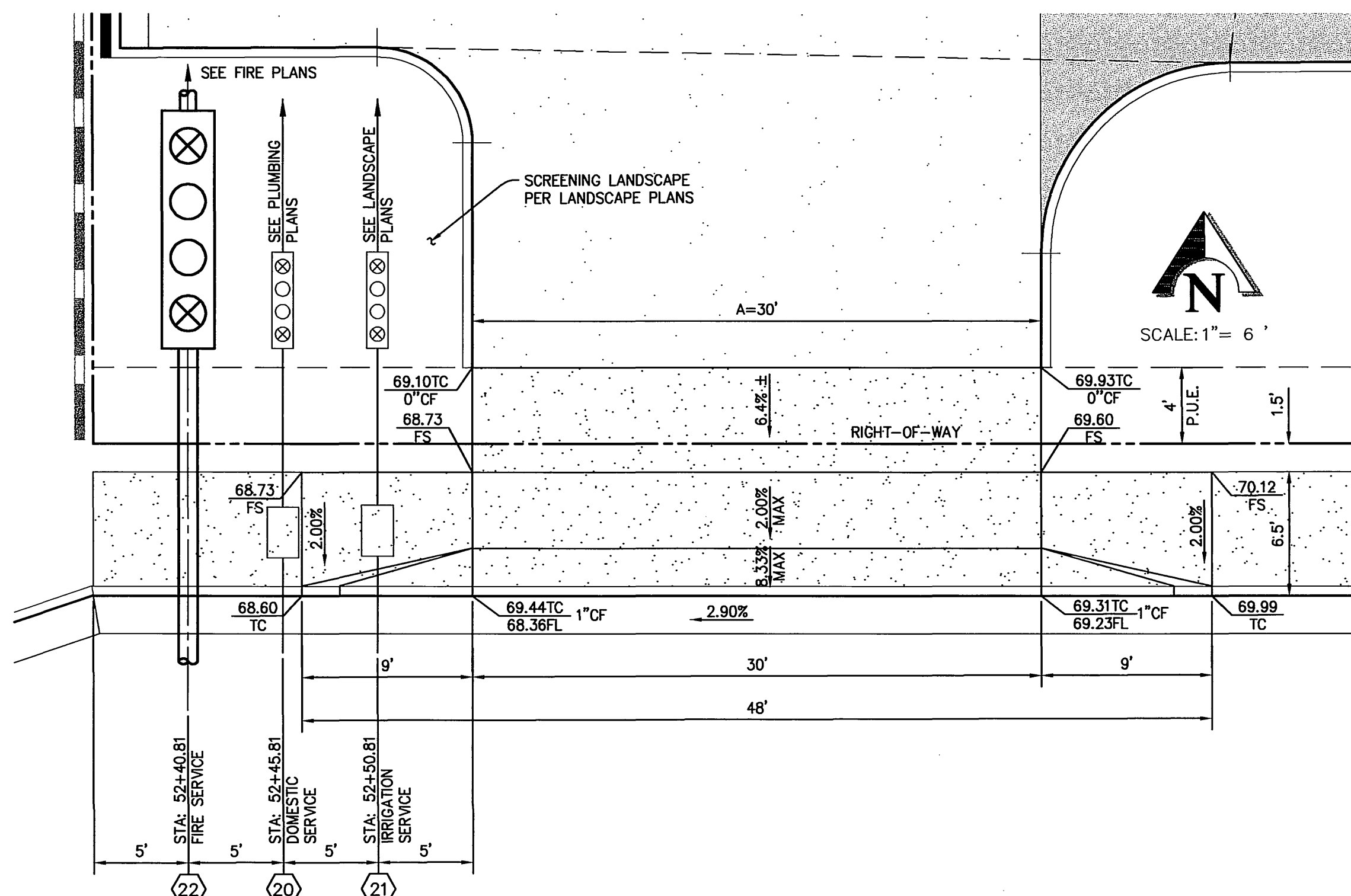
PACIFIC BELL PHONE COMPANY APPROVED BY: DATE: 6/21/02	SOUTHERN CALIFORNIA GAS COMPANY APPROVED BY: DATE: 6/21/02	CITY OF RIVERSIDE - FIRE DEPARTMENT HYDRANT LOCATION ONLY APPROVED BY: DATE: 6/21/02
CITY OF RIVERSIDE - PUBLIC UTILITIES, WATER APPROVED BY: DATE: 7/1/02	CITY OF RIVERSIDE - PUBLIC UTILITIES, ELECTRIC APPROVED BY: DATE: 6-25-02	CHARTER COMMUNICATIONS APPROVED BY: DATE: 6-21-02

Underground Service Alert Call: TOLL FREE 1-800 227-2600 TWO WORKING DAYS BEFORE YOU DIG	PRIVATE ENGINEERING NOTE CONSTRUCTION CONTRACTOR AGREES THAT IN ACCORDANCE WITH GENERALLY ACCEPTED CONSTRUCTION PRACTICES, CONSTRUCTION CONTRACTOR WILL BE REQUIRED TO ASSUME SOLE AND COMPLETE RESPONSIBILITY FOR JOB SITE CONDITIONS DURING THE COURSE OF CONSTRUCTION OF THE PROJECT, INCLUDING SAFETY OF ALL PERSONS AND PROPERTY, THAT THIS REQUIREMENT SHALL BE MADE TO APPLY CONTINUOUSLY AND NOT BE LIMITED TO NORMAL WORKING HOURS, AND CONSTRUCTION CONTRACTOR FURTHER AGREES TO DEFEND, INDEMNIFY AND HOLD DESIGN PROFESSIONAL HARMLESS FROM ANY AND ALL LIABILITY, REAL OR ALLEGED, IN CONNECTION WITH THE PERFORMANCE OF WORK ON THIS PROJECT, EXCEPTING LIABILITY ARISING FROM THE SOLE NEGLIGENCE OF DESIGN PROFESSIONAL.	SEAL REGISTERED PROFESSIONAL ENGINEER TERESITO N. TABIOLLO RCE No. 38826 Exp. 3-31-05	PREPARED UNDER THE DIRECTION OF: TERESITO N. TABIOLLO REGISTERED CIVIL ENGINEER NO. 38826 EXPIRATION DATE: 3-31-05 DATE: 6-19-02	KCT CONSULTANTS, INC. Civil Engineers - Surveyors - Planners P.O. Box 9705 Riverside, CA 92517-9705 4344 Latham St., Suite 200, Riverside, CA 92501 Phone: 909/941-8840 Fax: 909/941-8845 e-mail: kctinfo@kctconsultants.com CITY BUSINESS TAX CERTIFICATE NO. 69540 EXP. 4-7-03	DESIGNED BY: R.C. DRAWN BY: L.B. CHECKED BY: T.N.T.	CITY OF RIVERSIDE PUBLIC WORKS DEPARTMENT APPROVED BY: DEPUTY P.W. DIRECTOR PRINCIPAL ENGINEER TRAFFIC DIVISION PARK DEPARTMENT DATE: 7/1/02	STREET IMPROVEMENT PLAN STREET PLAN AND PROFILE TITLE SHEET 935 PALMYRITA AVENUE MP-004-001 HORIZ. SCALE: AS SHOWN VERT. SCALE: AS SHOWN FILE NO.: 1192-01	ACCOUNT NO. R-3666 SHEET 1 OF 5
--	---	---	---	--	---	---	--	---------------------------------------

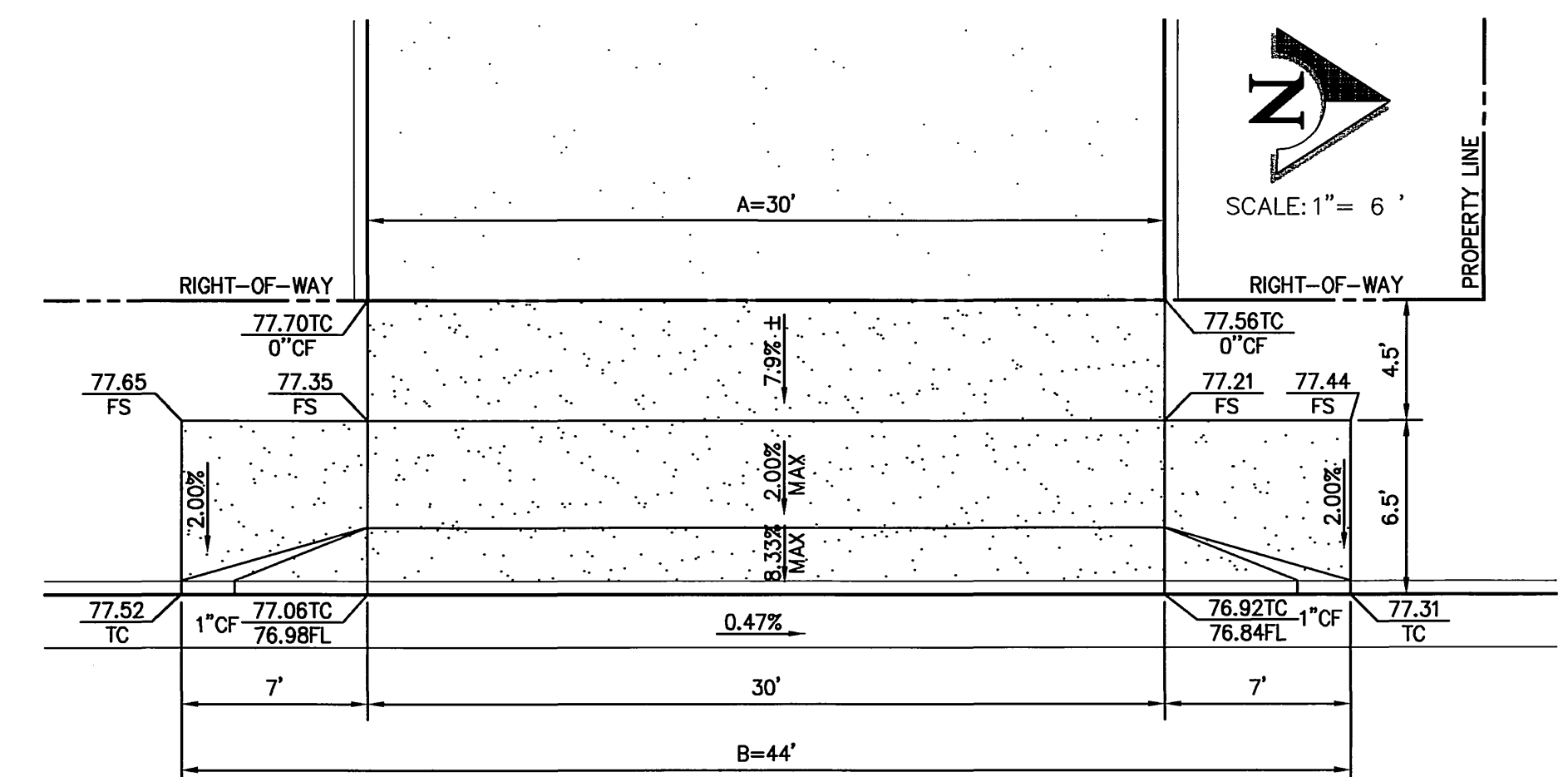
INDEXED 7-22-02



TYPICAL SECTION - NORTHGATE STREET
STA:11+00.00 TO STA:16+52.16
TRAFFIC INDEX = 8.0



DRIVEWAY APPROACH - PALMYRITA AVENUE
C/L STA:52+70.81



ACCOUNT NO.

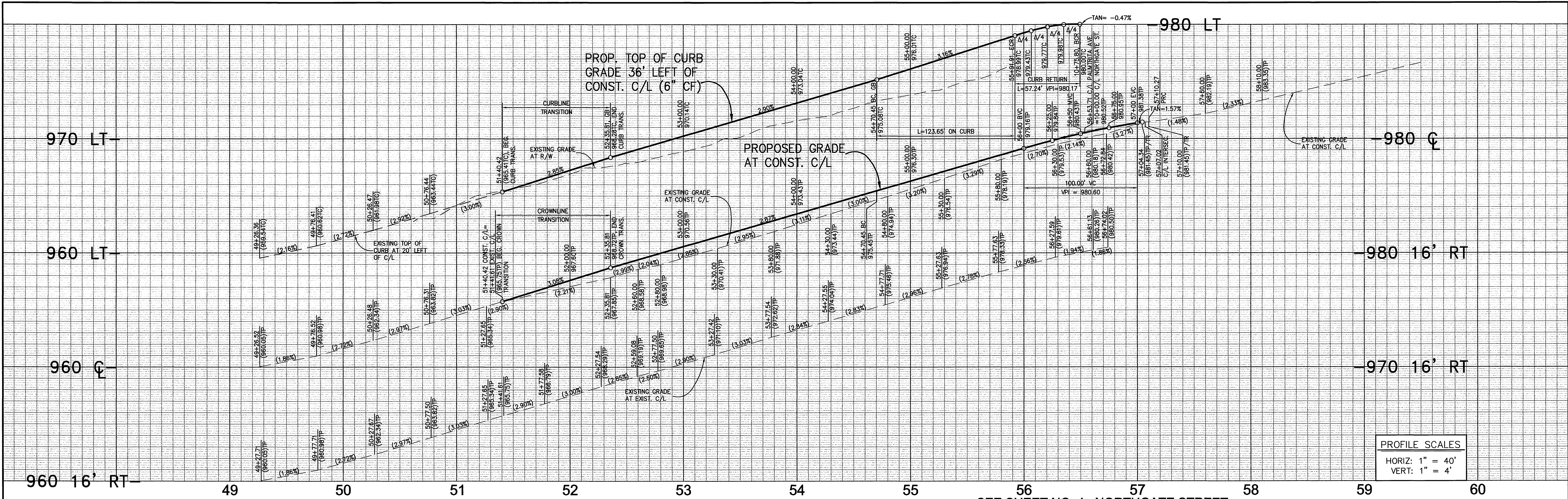
R-3666

SHEET 2 OF 5

FILE NO.:

1192-01

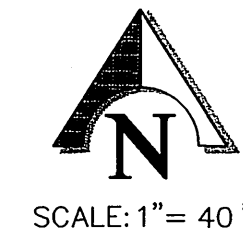
INDEXED 7-22-02 LHH



PROFILE SCALES
HORIZ: 1" = 40'
VERT: 1" = 4'

PAVING LEGEND

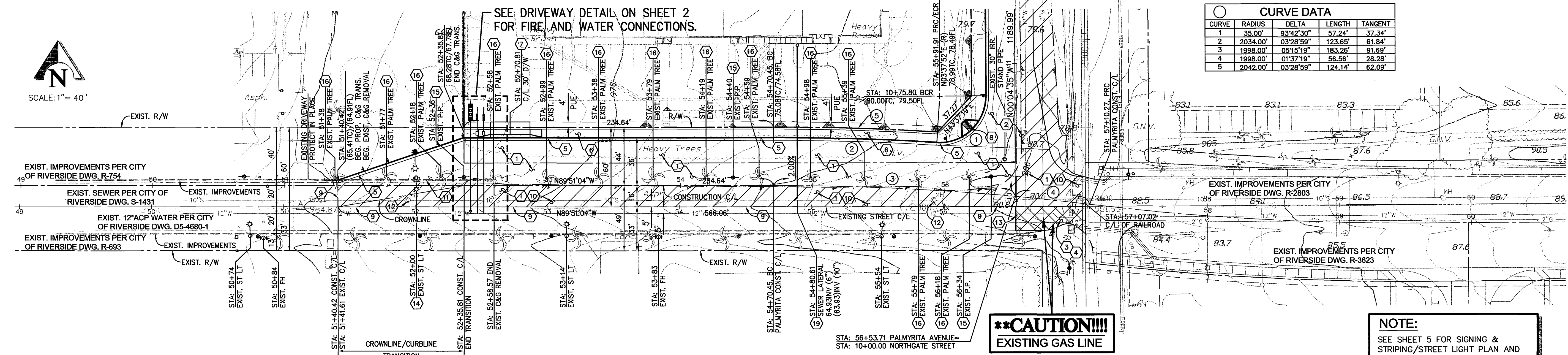
- A.C. PAVEMENT
- A.C. REMOVAL
- A.C. OVERLAY



SCALE: 1" = 40'

SEE DRIVEWAY DETAIL ON SHEET 2 FOR FIRE AND WATER CONNECTIONS.

CURVE DATA				
CURVE	RADIUS	DELTA	LENGTH	TANGENT
1	35.00'	93°42'30"	57.24'	37.34'
2	2034.00'	03°28'59"	123.65'	61.84'
3	1998.00'	05°15'19"	183.26'	91.69'
4	1998.00'	01°37'19"	56.56'	28.28'
5	2042.00'	03°28'59"	124.14'	62.09'



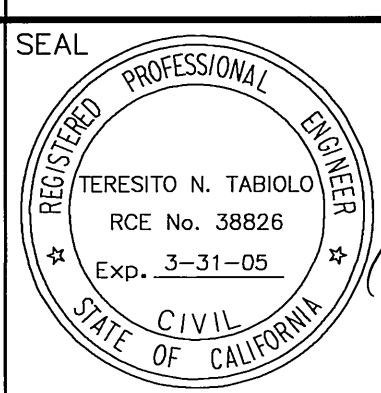
NOTE:
SEE SHEET 5 FOR SIGNING & STRIPING/STREET LIGHT PLAN AND ALL RELATED CONSTRUCTION.

CONSTRUCTION NOTES

- PLACE 4" A.C. PAVING OVER 8" CLASS II AGG. BASE PER S.R. 1592 R=77.
- PLACE 4" A.C. PAVING OVER 6" CLASS II AGG. BASE PER S.R. 1592 R=70.
- CONSTRUCT VARIABLE THICKNESS A.C. OVERLAY.
- COLD PLANE EXISTING AC PAVEMENT MIN. 0.1' PRIOR TO PLACEMENT OF OVERLAY.
- CONSTRUCT TYPE I CONCRETE CURB AND GUTTER (6" C.F.) PER CITY OF RIVERSIDE STD. DWG. 200.
- CONSTRUCT CONCRETE SIDEWALK PER CITY OF RIVERSIDE STD. DWG. 325.
- CONSTRUCT CONCRETE DRIVEWAY APPROACH TYPE CURB-P PER CITY OF RIVERSIDE STD. DWG. 302 (SEE SHT. 2).
- CONSTRUCT WHEELCHAIR RAMP (TYPE I) PER CITY OF RIVERSIDE STD. DWG. 304.
- SAW CUT AND TRIM EDGE OF EXISTING PAVING FOR SMOOTH JOINT.
- REMOVE EXISTING A.C. PAVEMENT.
- REMOVE EXISTING CURB AND GUTTER.
- ADJUST MANHOLE TO FINISHED GRADE.
- ADJUST WATER VALVE TO FINISHED GRADE (BY CITY FORCES).
- RELOCATE EXISTING STREET LIGHT BEHIND NEW CURB, PER CITY OF RIVERSIDE PUBLIC UTILITIES DEPARTMENT PLANS AT OWNERS EXPENSE.
- RELOCATE EXISTING POWER POLE AND/OR GUY ANCHOR BEHIND NEW CURB, BY CITY OF RIVERSIDE PUBLIC UTILITIES DEPARTMENT AT OWNERS EXPENSE.
- EXISTING PALM TREE TO BE RELOCATED PER THE APPROVED LANDSCAPE PLAN.
- INSTALL 6" PVC SEWER LATERAL WITH CLEANOUT & BACKFLOW VALVE AT RIGHT-OF-WAY LINE PER CITY STD. DWG. 562A.

PACIFIC BELL PHONE COMPANY APPROVED BY: <i>[Signature]</i> DATE: 6/24/02	SOUTHERN CALIFORNIA GAS COMPANY APPROVED BY: <i>[Signature]</i> DATE: 6/24/02	CITY OF RIVERSIDE - FIRE DEPARTMENT HYDRANT LOCATION ONLY APPROVED BY: <i>[Signature]</i> DATE: 6/25/02
CITY OF RIVERSIDE - PUBLIC UTILITIES, WATER APPROVED BY: <i>[Signature]</i> DATE: 7/1/02	CITY OF RIVERSIDE - PUBLIC UTILITIES, ELECTRIC APPROVED BY: <i>[Signature]</i> DATE: 6-25-02	CHARTER COMMUNICATIONS APPROVED BY: <i>[Signature]</i> DATE: 6-24-02
Underground Service Alert Call: TOLL FREE 1-800 227-2600 TWO WORKING DAYS BEFORE YOU DIG		

PALMYRITA AVENUE
STATION 51+40.00 TO STATION 57+04.00



PREPARED UNDER THE DIRECTION OF:
TERESITO N. TABOLO
REGISTERED CIVIL ENGINEER NO. 38826
EXPIRATION DATE: 3-31-05 DATE: 6-19-02

KCT CONSULTANTS, INC.
Civil Engineers - Surveyors - Planners
P.O. Box 6705 Riverside, CA 92517-0705
4341 Latham St., Suite 200, Riverside, CA 92501
Phone: 951-941-8940 Fax: 951-941-8945
e-mail: kctinfo@kctconsultants.com
CITY BUSINESS TAX CERTIFICATE NO. 69540 EXP. 4-7-03

MARK	REVISIONS	APPR.	DATE

CITY OF RIVERSIDE
PUBLIC WORKS DEPARTMENT
APPROVED BY: *[Signature]* DATE: 7/1/02
DEPUTY P.W. DIRECTOR
PRINCIPAL ENGINEER
TRAFFIC DIVISION
PARK DEPARTMENT

STREET IMPROVEMENT PLAN STREET PLAN AND PROFILE 935 PALMYRITA AVENUE MP-004-001	ACCOUNT NO. R-3666 SHEET 3 OF 5 FILE NO.: 1192-01
--	--

HORIZ. SCALE: 1"=40' VERT. SCALE: 1"=4'

INDEXED 7-23-02

980 LT 980 C 980 RT

PROP. TOP OF CURB GRADE
22' LEFT OF CONST. C/L (6" CF)

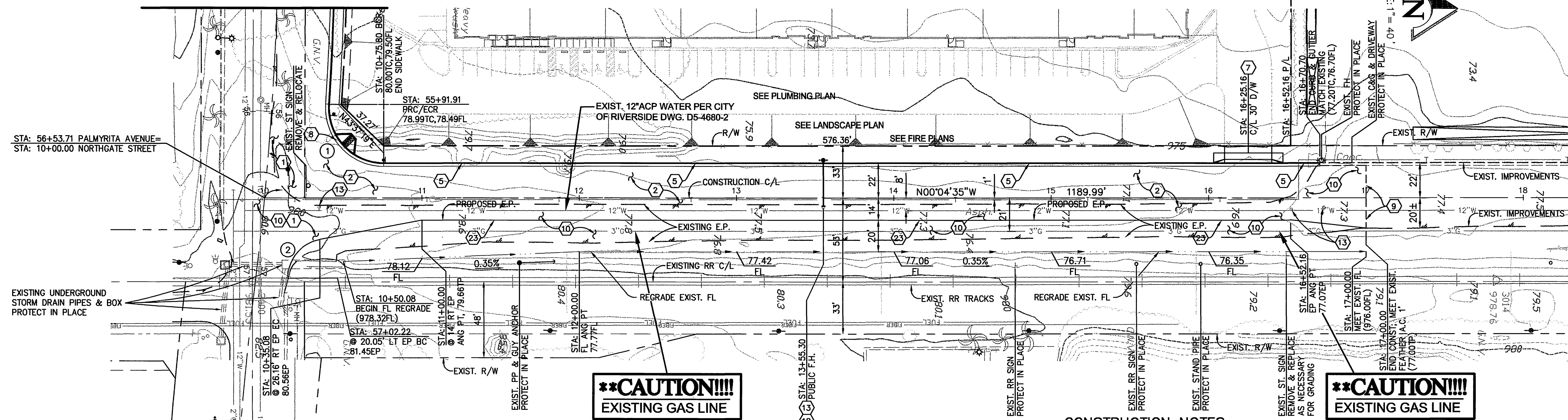
PROPOSED GRADE
AT CONST. C/L

PROP. GRADE AT 14'
RIGHT OF CONST. C/L

PROFILE SCALES

HORIZ: 1" = 40'
VERT: 1" = 4'

SEE SHEET NO. 3 PALMYRITA AVENUE



CURVE DATA				
CURVE	RADIUS	DELTA	LENGTH	TANGENT
1	35.00'	93°42'30"	57.24'	37.34'
2	25.00'	79°09'54"	34.54'	20.67'

PAVING LEGEND

- A.C. PAVEMENT
- A.C. REMOVAL
- A.C. OVERLAY

NOTE:

SEE SHEET 5 FOR SIGNING & STRIPING/STREET LIGHT PLAN AND ALL RELATED CONSTRUCTION.

CONSTRUCTION NOTES

- PLACE 4" A.C. PAVING OVER 8" CLASS II AGG. BASE PER S.R. 1592 R=77.
- PLACE 4" A.C. PAVING OVER 6" CLASS II AGG. BASE PER S.R. 1592 R=70.
- CONSTRUCT TYPE I CONCRETE CURB AND GUTTER (6" C.F.) PER CITY OF RIVERSIDE STD. DWG. 200.
- CONSTRUCT CONCRETE DRIVEWAY APPROACH "TYPE CURB-1" PER CITY OF RIVERSIDE STD. DWG. 302 (SEE SHT. 2).
- CONSTRUCT WHEELCHAIR RAMP (TYPE 1) PER CITY OF RIVERSIDE STD. DWG. 304.
- SAWCUT AND TRIM EDGE OF EXISTING PAVING FOR SMOOTH JOINT.
- REMOVE EXISTING A.C. PAVEMENT.
- ADJUST WATER VALVE TO FINISHED GRADE (BY CITY FORCES).
- INSTALL NEW SUPER FIRE HYDRANT ASSEMBLY TO EXISTING 6" VALVE PER CITY OF RIVERSIDE STD. DWG. CWD-700. (BY CITY FORCES)
- INSTALL 2" X 6" REDWOOD HEADER.

NORTHGATE STREET
STATION 10+00.00 TO STATION 17+00.00

PACIFIC BELL PHONE COMPANY APPROVED BY: <i>[Signature]</i> DATE: 6/2/02	SOUTHERN CALIFORNIA GAS COMPANY APPROVED BY: <i>[Signature]</i> DATE: 6/2/02	CITY OF RIVERSIDE - FIRE DEPARTMENT HYDRANT LOCATION ONLY APPROVED BY: <i>[Signature]</i> DATE: 6/2/02
CITY OF RIVERSIDE - PUBLIC UTILITIES, WATER APPROVED BY: <i>[Signature]</i> DATE: 7/1/02	CITY OF RIVERSIDE - PUBLIC UTILITIES, ELECTRIC APPROVED BY: <i>[Signature]</i> DATE: 6-25-02	CHARTER COMMUNICATIONS APPROVED BY: <i>[Signature]</i> DATE: 6-14-02

Underground Service Alert Call: TOLL FREE 1-800 227-2600 TWO WORKING DAYS BEFORE YOU DIG	PRIVATE ENGINEERING NOTE CONSTRUCTION CONTRACTOR AGREES THAT IN ACCORDANCE WITH GENERALITY ACCEPTED CONSTRUCTION PRACTICES, CONSTRUCTION CONTRACTOR WILL BE REQUIRED TO ASSUME SOLE AND COMPLETE RESPONSIBILITY FOR JOB SITE CONDITIONS DURING THE COURSE OF CONSTRUCTION OF THE PROJECT, INCLUDING SAFETY OF ALL PERSONS AND PROPERTY, THAT THIS REQUIREMENT SHALL BE MADE TO APPLY CONTINUOUSLY AND NOT BE LIMITED TO NORMAL WORKING HOURS, AND CONSTRUCTION CONTRACTOR FURTHER AGREES TO DEFEND, INDEMNIFY AND HOLD DESIGN PROFESSIONAL HARMLESS FROM ANY AND ALL LIABILITY, REAL OR ALLEGED, IN CONNECTION WITH THE PERFORMANCE OF WORK ON THIS PROJECT, EXCEPTING LIABILITY ARISING FROM THE SOLE NEGLIGENCE OF DESIGN PROFESSIONAL.	SEAL REGISTERED PROFESSIONAL ENGINEER (TERESITO N. TABOLO) RCE No. 38826 Exp. 3-31-05 STATE OF CALIFORNIA	PREPARED UNDER THE DIRECTION OF: <i>[Signature]</i> TERESITO N. TABOLO REGISTERED CIVIL ENGINEER NO. 38826 EXPIRATION DATE: 3-31-05 DATE: 6-19-02
--	---	--	---

KCT CONSULTANTS, INC.
Civil Engineers - Surveyors - Planners
P.O. Box 5705 Riverside, CA 92517-5705
4344 Latham St., Suite 200, Riverside, CA 92501
Phone: 909/941-8940 Fax: 909/941-8945
e-mail: kctinc@kctconsultants.com

CITY BUSINESS TAX CERTIFICATE NO. 69540 EXP. 4-7-03

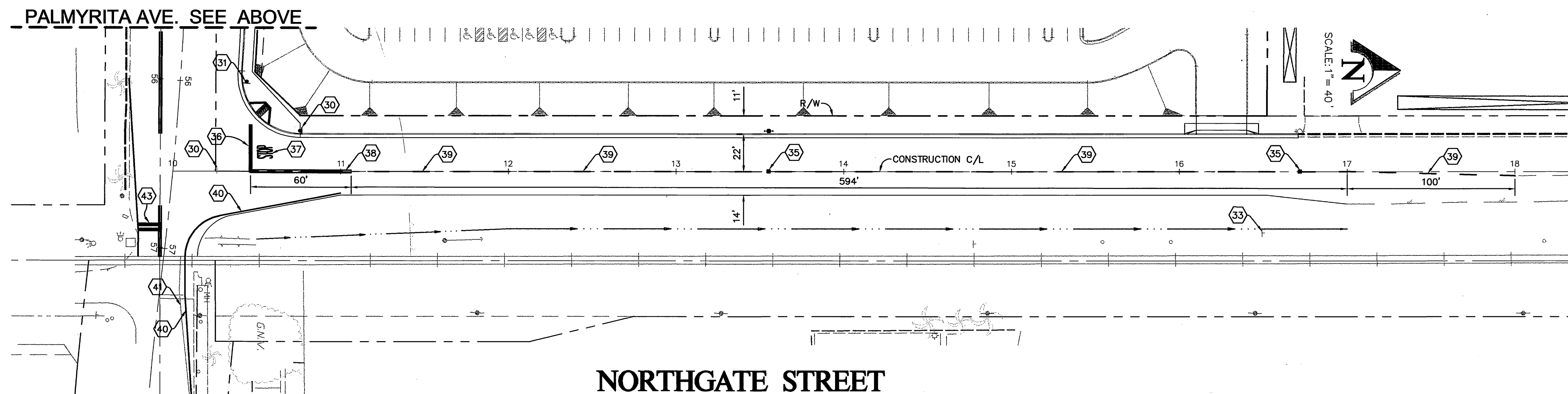
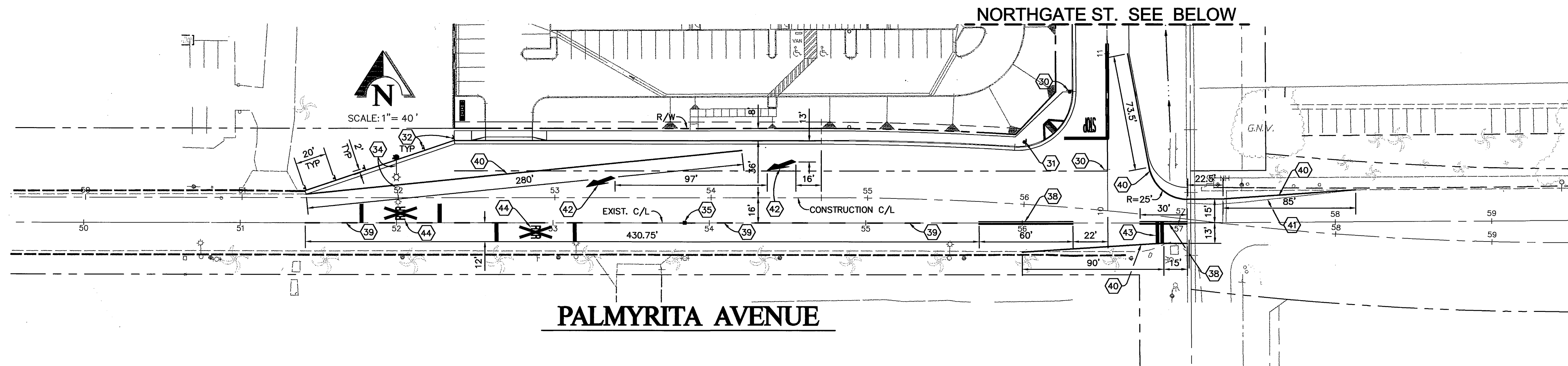
BENCHMARK:
CITY OF RIVERSIDE
POINT ID : J8-D3
ELEV. : 918.908
DESC : LEAD AND TACK IN THE TOP OF CURB 3.5' N'LY OF THE BCR OF THE N.W. CURB RETURN, PALMYRITA AND IOWA INTERSECTION

MARK	REVISIONS	APPR.	DATE

CITY OF RIVERSIDE PUBLIC WORKS DEPARTMENT			
APPROVED BY:	DATE:	BY:	APPROVED BY:
DEPUTY P.W. DIRECTOR	7/1/02	<i>[Signature]</i>	PUBLIC WORKS DIRECTOR
PRINCIPAL ENGINEER	7/1/02	<i>[Signature]</i>	
TRAFFIC DIVISION			
PARK DEPARTMENT			

STREET IMPROVEMENT PLAN		ACCOUNT NO.
STREET PLAN AND PROFILE		R-3666
NORTHGATE STREET		SHEET 4 OF 5
MP-004-001		FILE NO.: 1192-01
HORIZ. SCALE: 1"=40'	VERT. SCALE: 1"=4'	

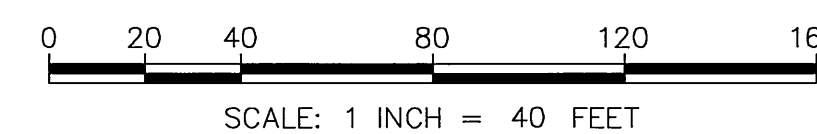
INDEXED 7-22-02



CONSTRUCTION NOTES

SIGNING AND STRIPING

- (30) RELOCATE EXISTING "STOP" SIGN PER CITY OF RIVERSIDE STD. DWG. 666.
- (31) INSTALL STREET NAME SIGN PER CITY OF RIVERSIDE STD. DWG. 662A.
- (32) INSTALL TYPE F-1 DELINEATORS AT 20' O/C PER CITY OF RIVERSIDE STD. DWG. 665.
- (33) REMOVE AND REPLACE EXISTING SPEED LIMIT SIGN AS NECESSARY FOR GRADING.
- (34) EXISTING RAILROAD CROSSING SIGN (W47) TO BE REPLACED ON RELOCATED STREET LIGHT.
- (35) PLACE BLUE REFLECTIVE HYDRANT MARKER PER CITY OF RIVERSIDE STD. CWD-700.
- (36) PLACE 12" THERMOPLASTIC LIMIT LINE PER CALTRANS STD. DWG. A24E.
- (37) PLACE THERMOPLASTIC "STOP" LEGEND PER CALTRANS STD. DWG. A24D.
- (38) PLACE DOUBLE YELLOW THERMOPLASTIC LINES PER CALTRANS STD. DWG. A20A, DETAIL 21.
- (39) PLACE 4" YELLOW CENTERLINE STRIPE PER CALTRANS STD. DWG. A20A, DETAIL 1.
- (40) PLACE 4" WHITE TRANSITION/EDGE LINE STRIPE PER CALTRANS STD. DWG. A20B, DETAIL 27B.
- (41) REMOVE EXISTING 4" WHITE TRANSITION/EDGE LINE STRIPE.
- (42) PLACE TYPE V(R) ARROW PER CALTRANS STD. DWG. A24A.
- (43) EXISTING DOUBLE LIMIT LINE TO BE REPLACED AFTER PAVING HAS BEEN COMPLETED PER CALTRANS STD. DWG. A24E & CALTRANS TRAFFIC MANUAL FIG. 6-40.
- (44) EXISTING RAILROAD CROSSING SYMBOL TO BE REPLACED AFTER PAVING HAS BEEN COMPLETED PER CALTRANS STD. DWG. A24C & CALTRANS TRAFFIC MANUAL FIG. 6-40.



Underground Service Alert

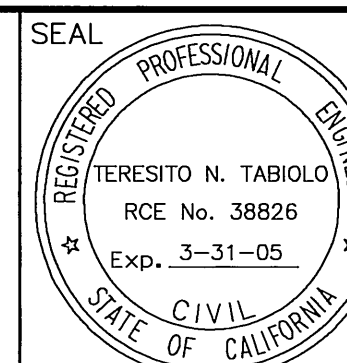


Call: TOLL FREE
1-800
227-2600

TWO WORKING DAYS BEFORE YOU DIG

PRIVATE ENGINEERING NOTE

CONSTRUCTION CONTRACTOR AGREES THAT IN ACCORDANCE WITH GENERALLY ACCEPTED CONSTRUCTION PRACTICES, CONSTRUCTION CONTRACTOR WILL BE REQUIRED TO ASSUME SOLE AND COMPLETE RESPONSIBILITY FOR JOB SITE CONDITIONS DURING THE COURSE OF CONSTRUCTION OF THE PROJECT, INCLUDING SAFETY OF ALL PERSONS AND PROPERTY, THAT THIS REQUIREMENT SHALL BE MADE TO APPLY CONTINUOUSLY AND NOT BE LIMITED TO NORMAL WORKING HOURS, AND CONSTRUCTION CONTRACTOR FURTHER AGREES TO DEFEND, INDEMNIFY AND HOLD DESIGN PROFESSIONAL HARMLESS FROM ANY AND ALL LIABILITY, REAL OR ALLEGED, IN CONNECTION WITH THE PERFORMANCE OF WORK ON THIS PROJECT, EXCEPTING LIABILITY ARISING FROM THE SOLE NEGLIGENCE OF DESIGN PROFESSIONAL.



PREPARED UNDER THE DIRECTION OF:

TERESITO N. TABOILLO
REGISTERED CIVIL ENGINEER NO. 38826
EXPIRATION DATE: 3-31-05 DATE: 6-19-02



KCT CONSULTANTS, INC.
Civil Engineers - Surveyors - Planners

P.O. Box 5705 Riverside, CA 92517-5705
4341 Latham St., Suite 200, Riverside, CA 92501
Phone: 951-541-8940 Fax: 951-541-8945
e-mail: kctinc@kctconsultants.com

EXP. 4-7-03

CITY BUSINESS TAX CERTIFICATE NO. 69540
BENCHMARK: CITY OF RIVERSIDE
POINT ID : J8-D3
ELEV: 918.908
DESC : LEAD AND TACK IN THE TOP OF CURB 3.5' N/LY OF THE BCR OF THE N.W. CURB RETURN, PALMYRITA AND IOWA INTERSECTION

MARK REVISIONS APPR. DATE
DESIGNED BY R.C. DRAWN BY L.B. CHECKED BY T.N.T.

CITY OF RIVERSIDE
PUBLIC WORKS DEPARTMENT

APPROVED BY:	DATE:	BY:	APPROVED BY:
DEPUTY P.W. DIRECTOR			
PRINCIPAL ENGINEER	7/1/02	7/1/02	7/1/02
TRAFFIC DIVISION			
PARK DEPARTMENT			

STREET IMPROVEMENT PLAN

ACCOUNT NO.

STREET PLAN AND PROFILE
SIGNING & STRIPING
MP-004-001

R-3666

SHEET 5 OF 5

HORIZ. SCALE: AS SHOWN VERT. SCALE: AS SHOWN FILE NO.: 1192-01

INDEXED 7-22-02 G.H.