

**CONSTRUCTION NOTES:**

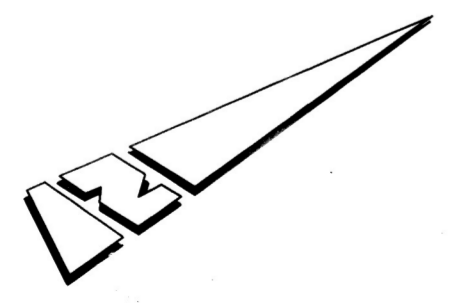
- NUMBERS ABOVE 100 IN A HEXAGON ON THE PLAN REFER TO THE RESPECTIVE STANDARD DRAWING AND SHALL BE CONSTRUCTED ACCORDINGLY. UNLESS MODIFICATIONS ARE NOTED ON THE PLAN OR COVER SHEET. ANY NUMBER SHOWN BELOW THE STANDARD DRAWING NUMBER INDICATES THE SPECIFIC ALTERNATE TO BE CONSTRUCTED.
- 200 REMOVE AND REPLACE P.C.C. CURB & GUTTER PER CITY STANDARD DRAWING 200.
- 302 REMOVE AND REPLACE P.C.C. DRIVEWAY APPROACH PER CITY STANDARD DRAWING 302. MATCH-UP LIMITS FOR DRIVEWAY MAY CHANGE AT THE TIME OF CONSTRUCTION FROM LIMITS NOTED ON PLANS TO ENSURE PROPER TRANSITION BETWEEN PROPOSED AND THE EXISTING IMPROVEMENTS. EARLY HIGH STRENGTH CONCRETE SHALL BE USED FOR DRIVEWAY REPLACEMENT.
- 304 CONSTRUCT P.C.C. WHEELCHAIR RAMP PER CITY STANDARD DRAWING 304. TYPE AND LOCATION OF RAMP MAY CHANGE DURING CONSTRUCTION TO FIT SITE CONDITION AS DIRECTED BY THE ENGINEER.
- 325 CONSTRUCT P.C.C. SIDEWALK PER CITY STANDARD NO 325
- ADJ ADJUST SEWER, STORM DRAIN, ELECTRIC, WATER MANHOLE COVERS OR GATE VALVES TO GRADE AS NOTED.
- REL RELOCATE EXISTING SIGN, TREE OR OBJECT, AS SHOWN ON PLANS, AS DIRECTED BY THE ENGINEER AND/OR PROPERTY OWNER.
- REM REMOVE AND DISPOSE EXISTING IMPROVEMENTS OR OBJECTS IN CONFLICT WITH PROPOSED CONSTRUCTION AND/OR IMPROVEMENTS.
- 1 COLD MILL EXISTING AC PAVEMENT AT A VARIABLE THICKNESS WITH A MIN. DEPTH OF 0.10' TO PROVIDE A MAX. OF 5% CROSSFALL AT THE WHEELCHAIR RAMPS. THE DEPTH OF THE COLD MILLING MAY VARY BETWEEN 0.10' TO 0.25'.
- 2 OVERLAY COLD MILLED AREAS WITH A VARIABLE THICKNESS OF DG+1. AT A MIN. 0.10' TO PROVIDE MAX. CROSSFALL OF 5% FOR THE WHEELCHAIR RAMPS. THE OVERLAY THICKNESS MAY VARY BETWEEN 0.10' TO 0.25'.
- 3 SLURRY PAVED AREA WITH TYPE II SLURRY BETWEEN THE LIMITS SHOWN ON PLAN.
- 4 REMOVE EXISTING CONCRETE SIDEWALK INCLUDING HANDICAP RAMP GROOVES AND REPLACE WITH 3.5" P.C.C. SIDEWALK PER CITY STD. 325 TO MEET A.D.A. REQUIREMENTS.

AS-BUILT PLAN  
BY KORMX, INC.  
AS PER NOTES

- ADDED Location 1 - Hole and Mitchell Av (See exhibit 2)
- ADDED Location 2 - Hole Av and California Av (See exhibit 2)
- ADDED Location 3 - Sherman Dr and Garfield St (See exhibit 3)
- ADDED Location 4 - Juniper Av and Birch St (See exhibit 4)
- ADDED Location 5 - Redwood Dr and Glenwood Dr. (See exhibit 5)
- ADDED Location 6 - Pine St and Second St (See exhibit 6)
- ADDED Location 7 - Harrison St and Bellavista Av (See exhibit 7)
- ADDED Location 8 - Fifth St & Lemon St (See exhibit 8)
- ADDED Location 9 - Phoenix Av and Arlington Av (See exhibit 9)
- ADDED Location 10 - Crest Av and Beau Av (See exhibit 10)

NO WORK PERFORMED  
DUE TO MACADAM MATERIAL  
W/C RAMP ONLY

As Built 5/09/23 B.O



Underground Service Alert  
Call: TOLL FREE  
1-800-227-2600  
TWO WORKING DAYS BEFORE YOU DIG



**ENGINEER IN RESPONSIBLE CHARGE**  
*Uralim Homaid*  
IBRAHIM A. MASSOUD  
R.C.E. No. 64224 EXPIRES: 6-30-11  
DATE: 4/30/2010

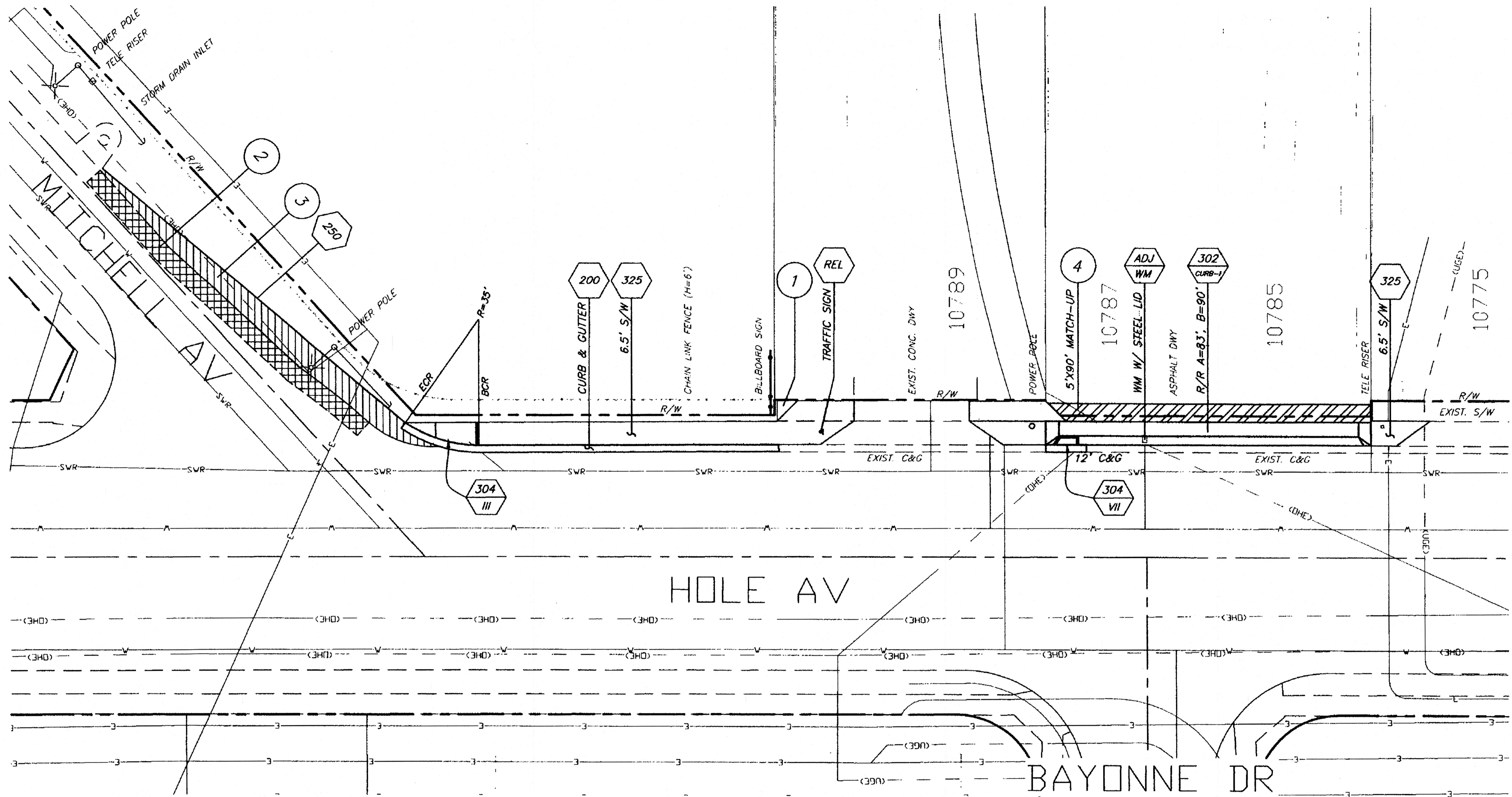


DESIGNED BY	D.M.C.	DRAWN BY	D.M.C.	CHECKED BY	IT
As Built revisions					
APPROVED BY	DATE	APPROVED BY	DATE	APPROVED BY	DATE
PRINCIPAL ENGINEER	5/4/10	CONSTRUCTION ADMIN.	5/5/10	SURVEYOR	
STREET SERVICES	5-4-10	TRAFFIC ENGINEER			

CITY OF RIVERSIDE, CALIFORNIA  
PUBLIC WORKS DEPARTMENT  
APPROVED BY  
*Alan B. S.*  
CITY ENGINEER  
DATE: 5/5/10

LEMON ST. IMPROVEMENTS  
FOURTEENTH ST. TO TENTH ST.  
ADA IMPROVEMENTS  
HORIZ. SCALE: 1"=40'

ACCT. NO.  
W.O. NO.  
**R-4166**  
SHEET 1 OF 1  
FILE NO.



**CONSTRUCTION NOTES:**

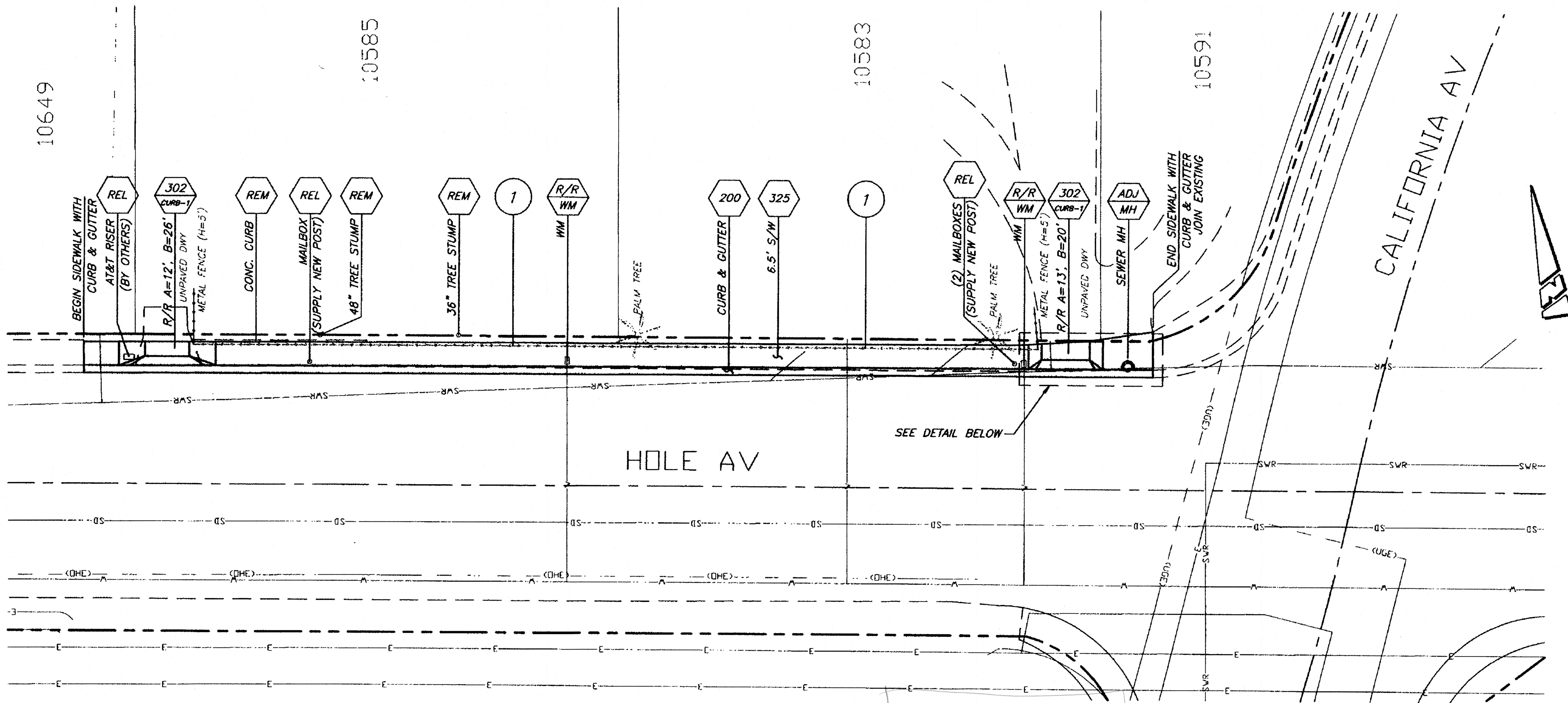
- 325 CONSTRUCT P.C.C. SIDEWALK PER CITY STANDARD NO. 325
- 302 CURB CONSTRUCT P.C.C. DRIVEWAY APPROACH PER CITY STANDARD DRAWING 302. MATCH-UP LIMITS FOR DRIVEWAYS MAY CHANGE AT THE TIME OF CONSTRUCTION FROM LIMITS NOTED ON PLANS TO ENSURE PROPER TRANSITION BETWEEN PROPOSED AND THE EXISTING IMPROVEMENTS.
- 200 CONSTRUCT P.C.C. CURB & GUTTER PER CITY STANDARD NO. 200

- 304 I CONSTRUCT P.C.C. WHEELCHAIR RAMP PER CITY STANDARD NO. 304
- 250 CONSTRUCT AC BERM PER CITY STANDARD NO. 250 (H=6")
- ADJ WM ADJUST WATER METER VAULT AND COVER TO GRADE
- REL RELOCATE EXISTING SIGN AS SHOWN TO PROVIDE A MIN. 36" CLEAR ACCESS. PROVIDE NEW POST.
- 1 REMOVE EXISTING PORTION OF SIDEWALK. AREA TO REMAIN UNIMPROVED.

- 2 REMOVE 5' WIDE STRIP OF EXISTING DETERIORATED AC PAVEMENT. PAVE REMOVAL AREA WITH DGAC AT A DEPTH OF 6" OVER COMPACTED NATIVE.
- 3 PAVE WITH 6" THICK DGAC OVER COMPACTED NATIVE.
- 4 AC PAVEMENT MATCH-UP, 3" THICK.

*As-Built Plan  
by Kormax, Inc.  
as per plans*

**EXHIBIT #1**

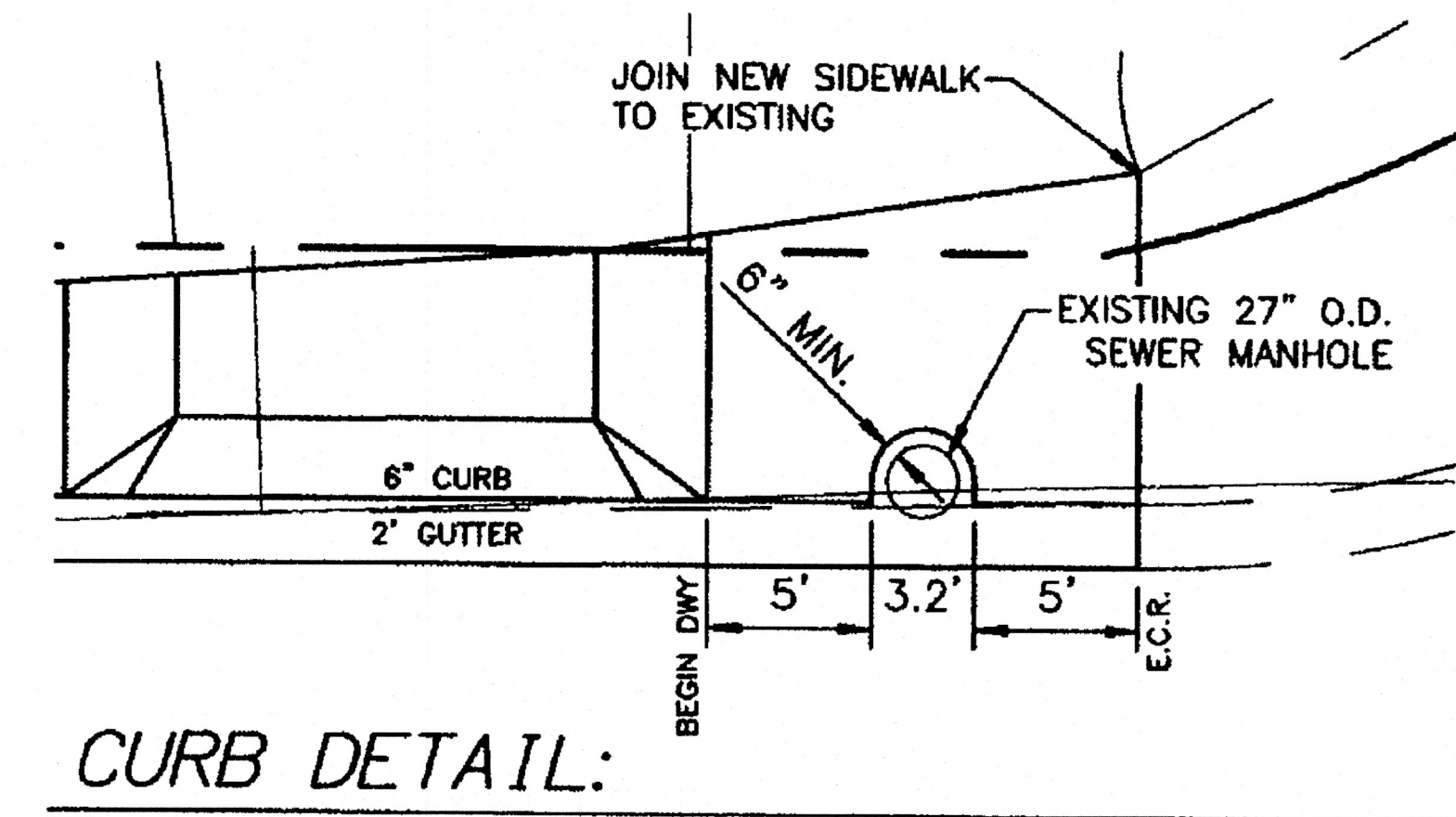


As-built plans  
by Korms Inc.  
as per plans.

**CONSTRUCTION NOTES:**

- 325** CONSTRUCT P.C.C. SIDEWALK PER CITY STANDARD NO 325
- 302 CURB** CONSTRUCT P.C.C. DRIVEWAY APPROACH PER CITY STANDARD DRAWING 302. MATCH-UP LIMITS FOR DRIVEWAYS MAY CHANGE AT THE TIME OF CONSTRUCTION FROM LIMITS NOTED ON PLANS TO ENSURE PROPER TRANSITION BETWEEN PROPOSED AND THE EXISTING IMPROVEMENTS.
- 200** CONSTRUCT P.C.C. CURB & GUTTER PER CITY STANDARD NO 200
- ADJ MH** ADJUST SEWER MANHOLE COVER TO GRADE. MANHOLE COVER SHALL BE SEALED (BY CITY FORCES).

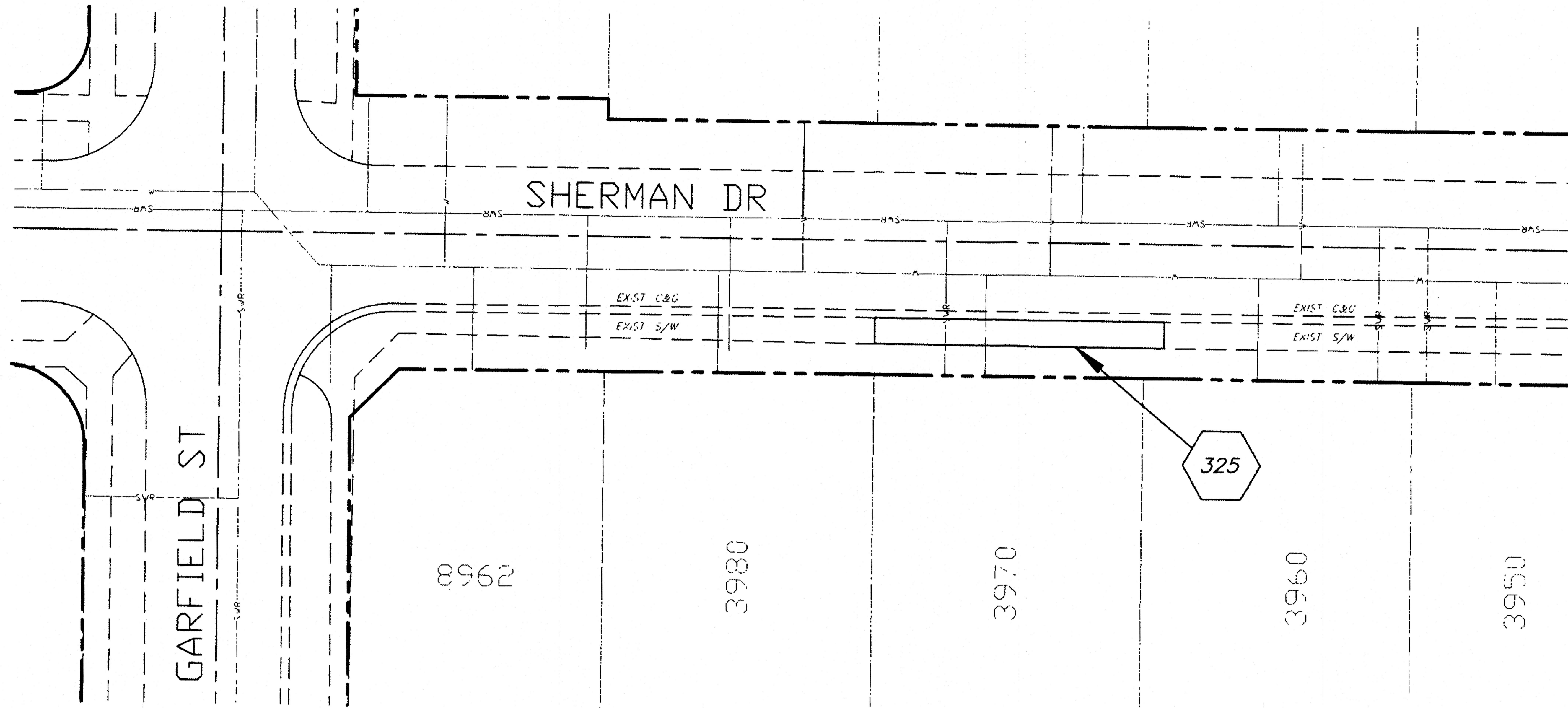
- R/R WM** REMOVE AND REPLACE EXISTING WATER METER VAULT AND COVER TO GRADE
- REM** REMOVE AND DISPOSE OF EXISTING OBSTRUCTIONS TO ALLOW FOR NEW CONSTRUCTION.
- REL** RELOCATE EXISTING OBJECT AS SHOWN ON PLANS AND AS DIRECTED BY THE ENGINEER AND/OR OWNER.
- 1** REMOVE EXISTING WIRE MESH FENCING AND POSTS BETWEEN BOTH DRIVEWAYS AND INSTALL NEW CHAIN LINK FENCE (H=6') AT R.O.W. ATTACH TO REMAINING PORTION OF METAL FENCING, per std. dwg. 380.



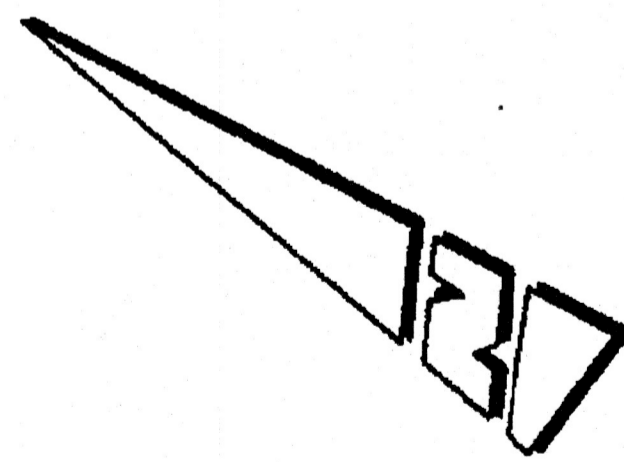
**CURB DETAIL:**

N. T. S.

**EXHIBIT #2**



As-built plan  
by Kormig Inc  
as per plans.



CONSTRUCTION NOTES:


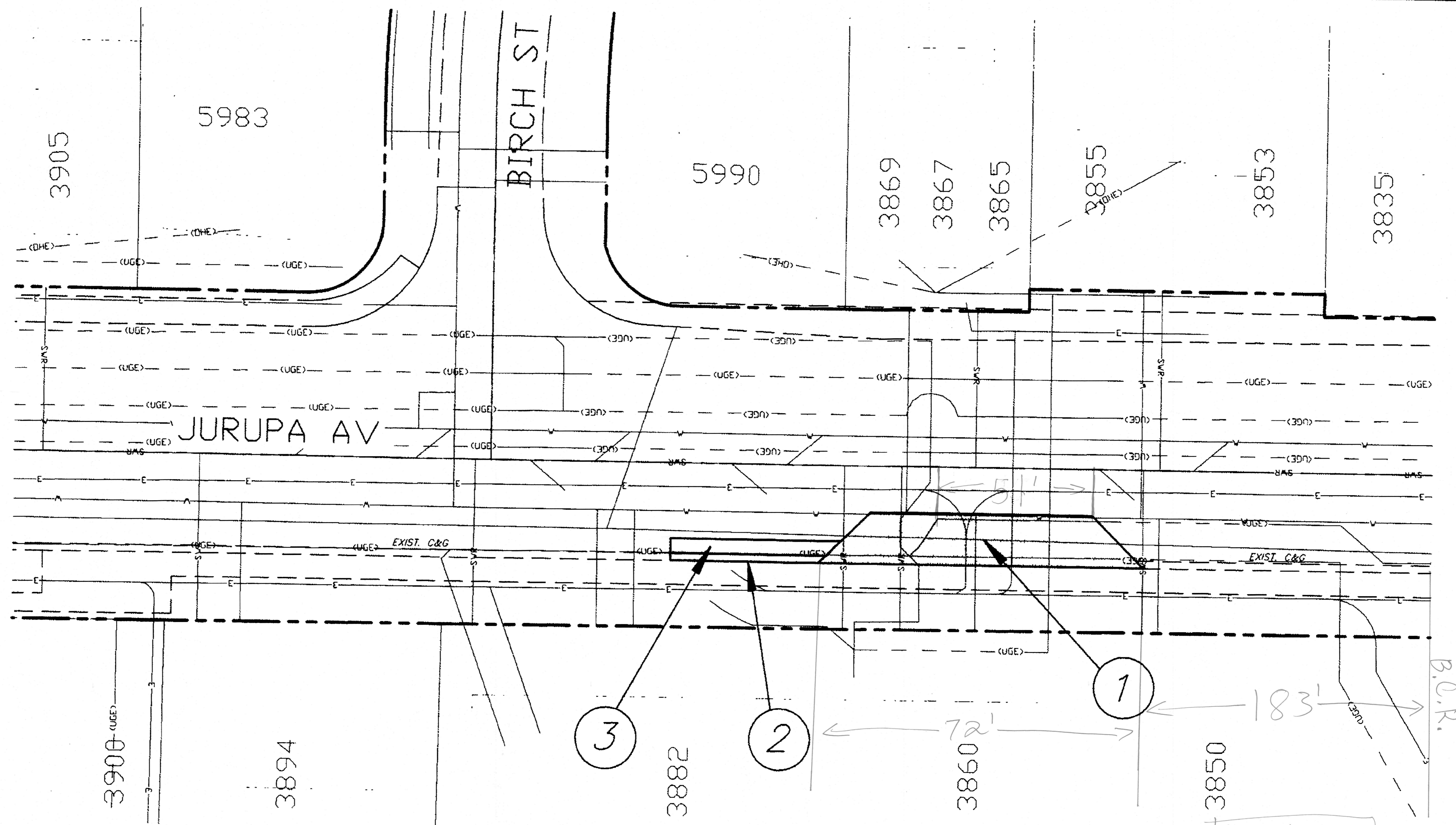
 CONSTRUCT P.C.C. SIDEWALK PER CITY STANDARD NO. 325. PROPOSED SIDEWALK IS 420 S.F. AND SHALL BE JOINED AND MATCHED TO EXISTING SIDEWALK.

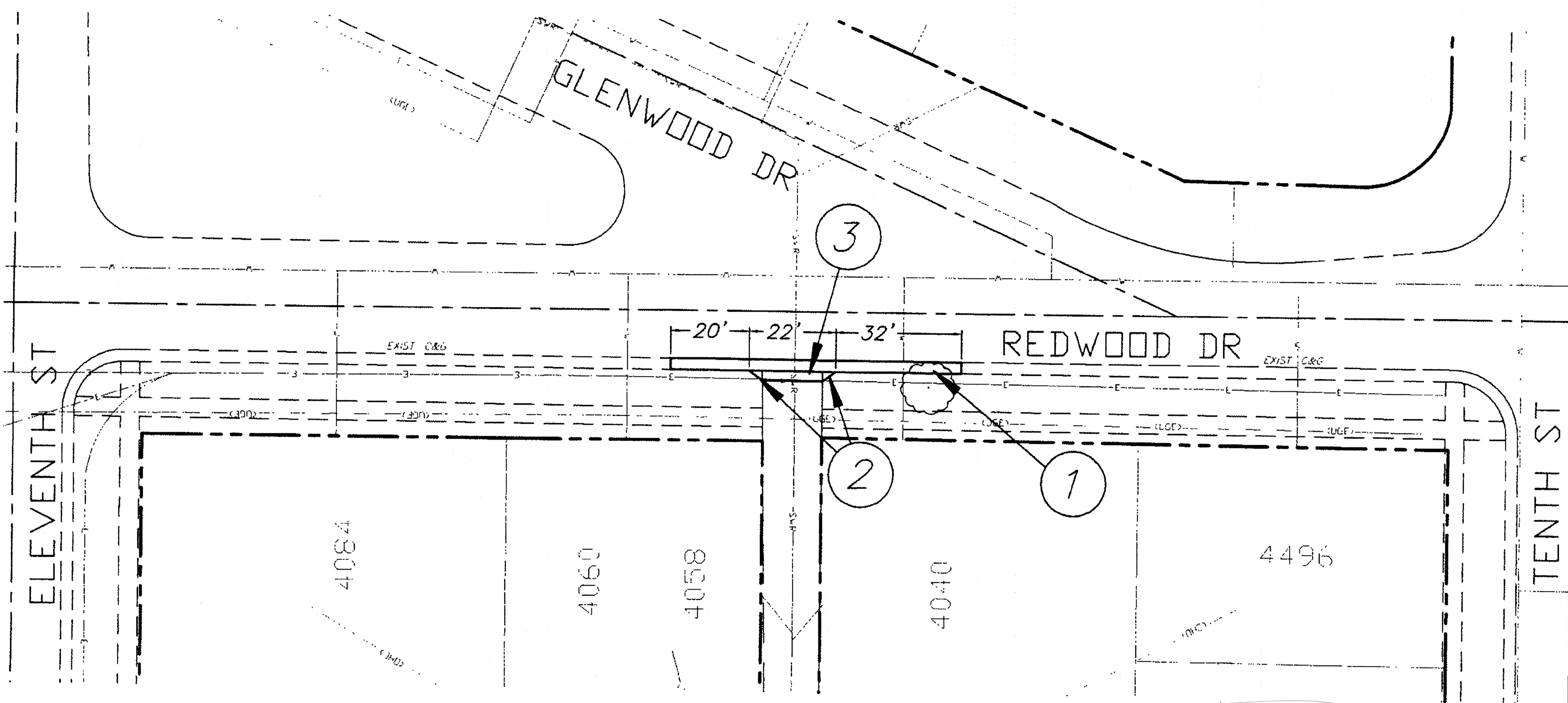
EXHIBIT #3



**CONSTRUCTION NOTES:**

- 1 CONSTRUCT P.C.C. BUS STOP PAD PER STANDARD BUS STOP PAD DETAIL. PAD IS 1,036 S.F.
- 2 REMOVE AND REPLACE P.C.C. CURB AND GUTTER PER CITY STANDARD 200. (H=6"-10") PROPOSED CURB AND GUTTER IS 40 L.F.
- 3 REMOVE AND REPLACE A.C. PAVMENT (4' WIDE X 40' LONG) 10" OVER COMPACTED NATIVE/BASE = 10 TON.

**EXHIBIT #4**

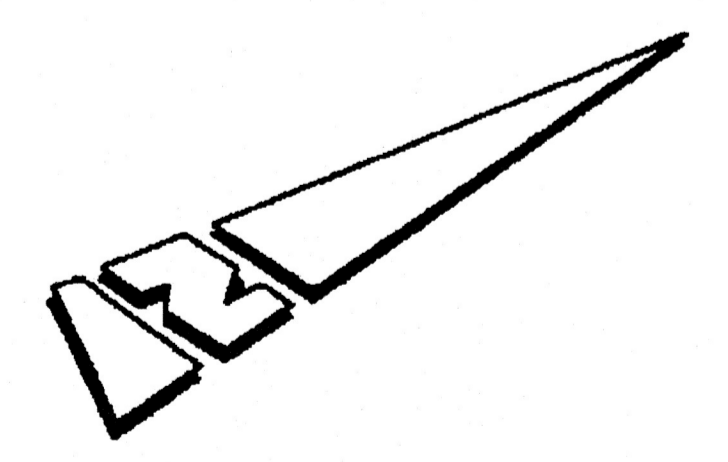


As-built plan  
by Kormys Inc.  
as per plans

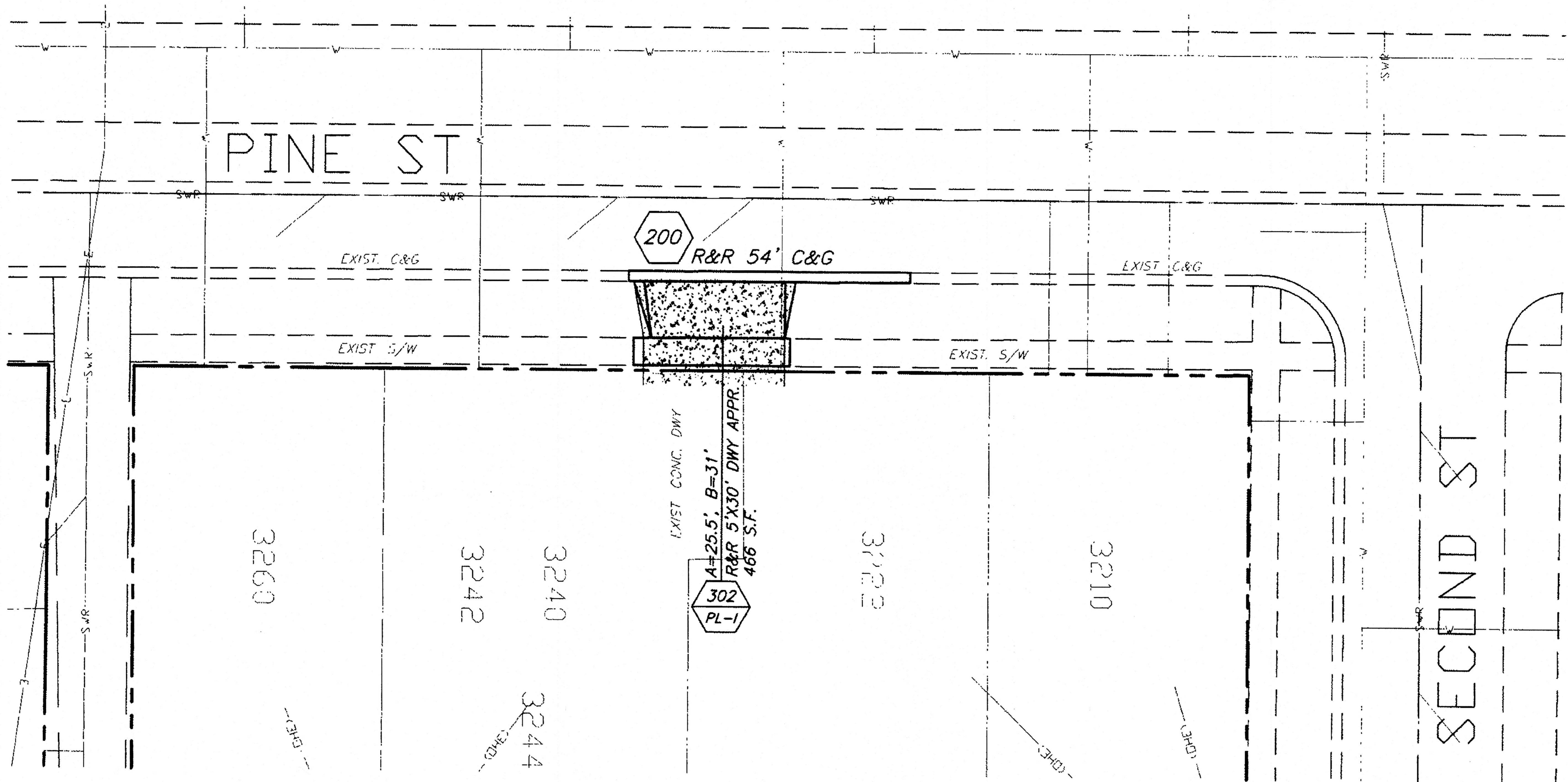
**CONSTRUCTION NOTES:**

- ① CONSTRUCT P.C.C. CURB AND GUTTER PER CITY STANDARD NO. 200. PROPOSED CURB AND GUTTER IS 74 L.F. WITH A 3" GUTTER AND SHALL BE JOINED AND MATCHED TO EXISTING.
- ② CONSTRUCT P.C.C. RETAINING CURB (0"-6"). PROPOSED CURB IS 10 L.F.


- ③ CONSTRUCT P.C.C. DRIVEWAY APPROACH TO MATCH EXISTING AREA DRIVEWAYS. PROPOSED DRIVEWAY APPROACH IS 60 S.F. AND SHALL BE JOINED AND MATCHED TO EXISTING DRIVEWAY, per std. dwg 302.



**EXHIBIT #5**

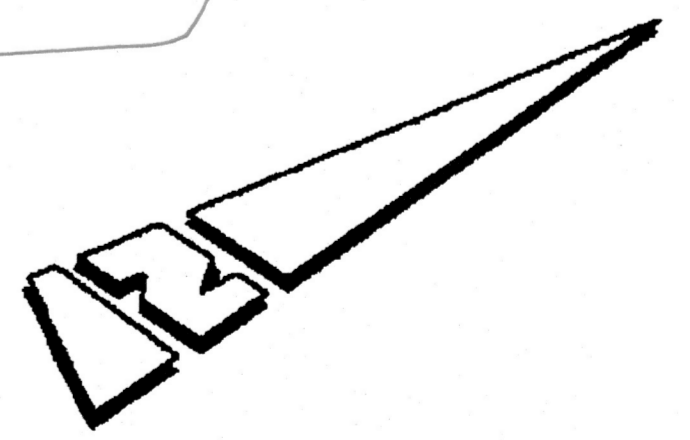


**CONSTRUCTION NOTES:**

 REMOVE AND REPLACE EXISTING P.C.C. CURB & GUTTER PER CITY STANDARD NO. 200.

 REMOVE AND REPLACE EXISTING P.C.C. DRIVEWAY APPROACH PER CITY STANDARD DRAWING 302.

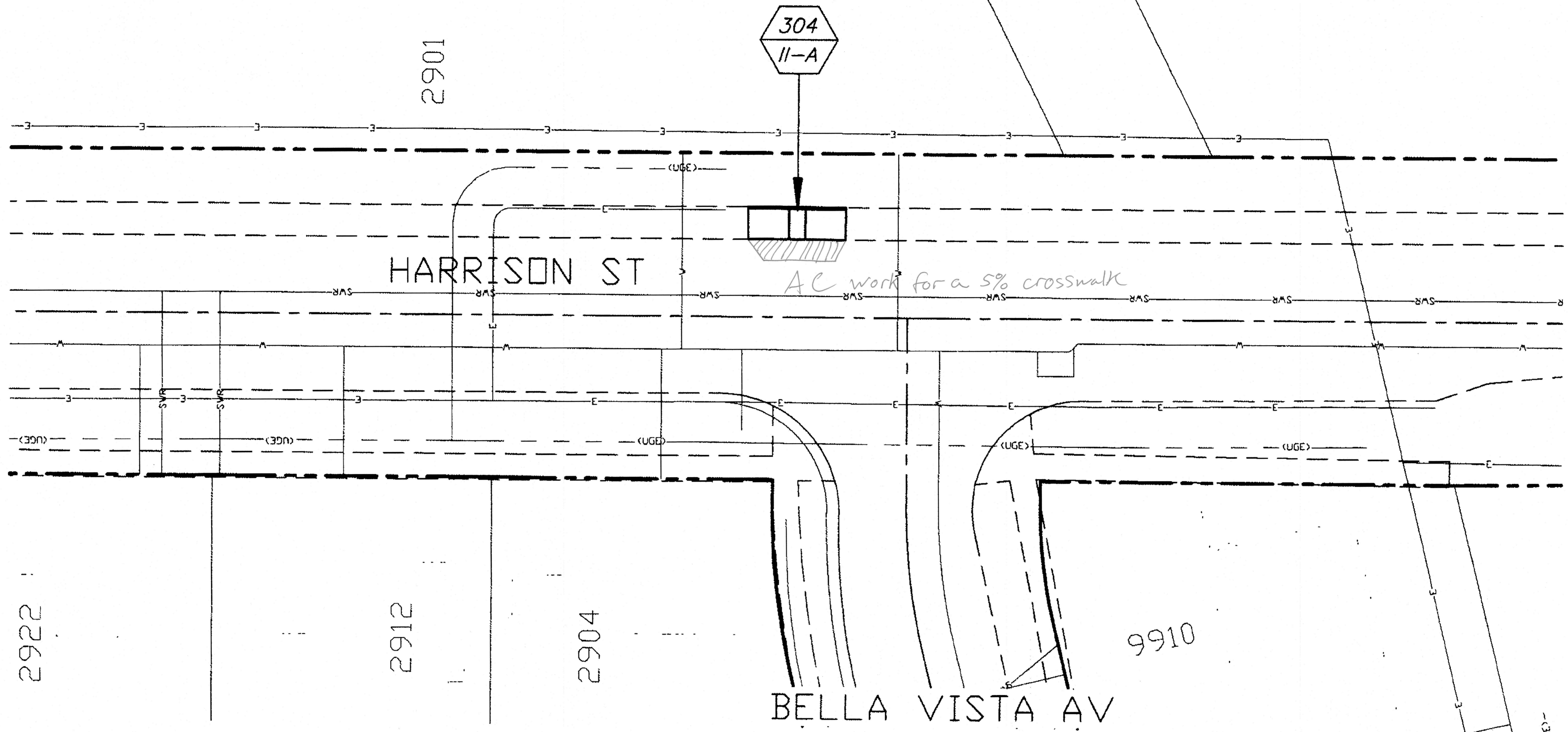
As-built plans  
by Kormx, Inc  
as per plans.




**EXHIBIT #6**

HARRISON SCHOOL

HARRISON PARK



CONSTRUCTION NOTES:

 COMPLETELY REMOVE AND DISPOSE OF EXISTING CONCRETE WHEELCHAIR RAMP. CONSTRUCT P.C.C. WHEELCHAIR RAMP PER CITY STANDARD NO. 304.

As-built plan  
by Kormys Inc.  
as per notes.

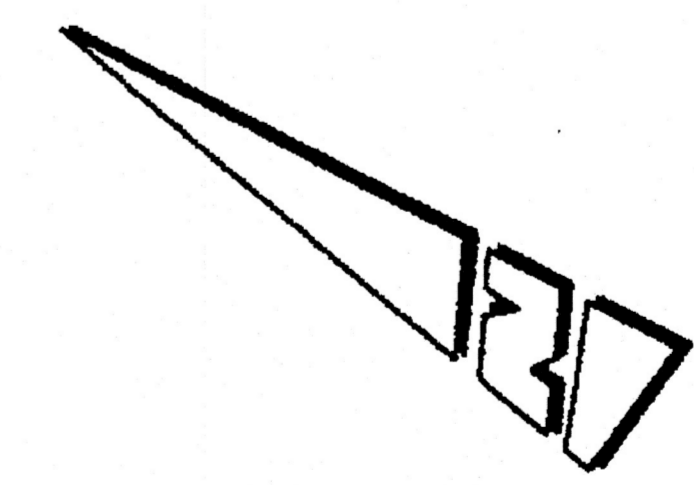
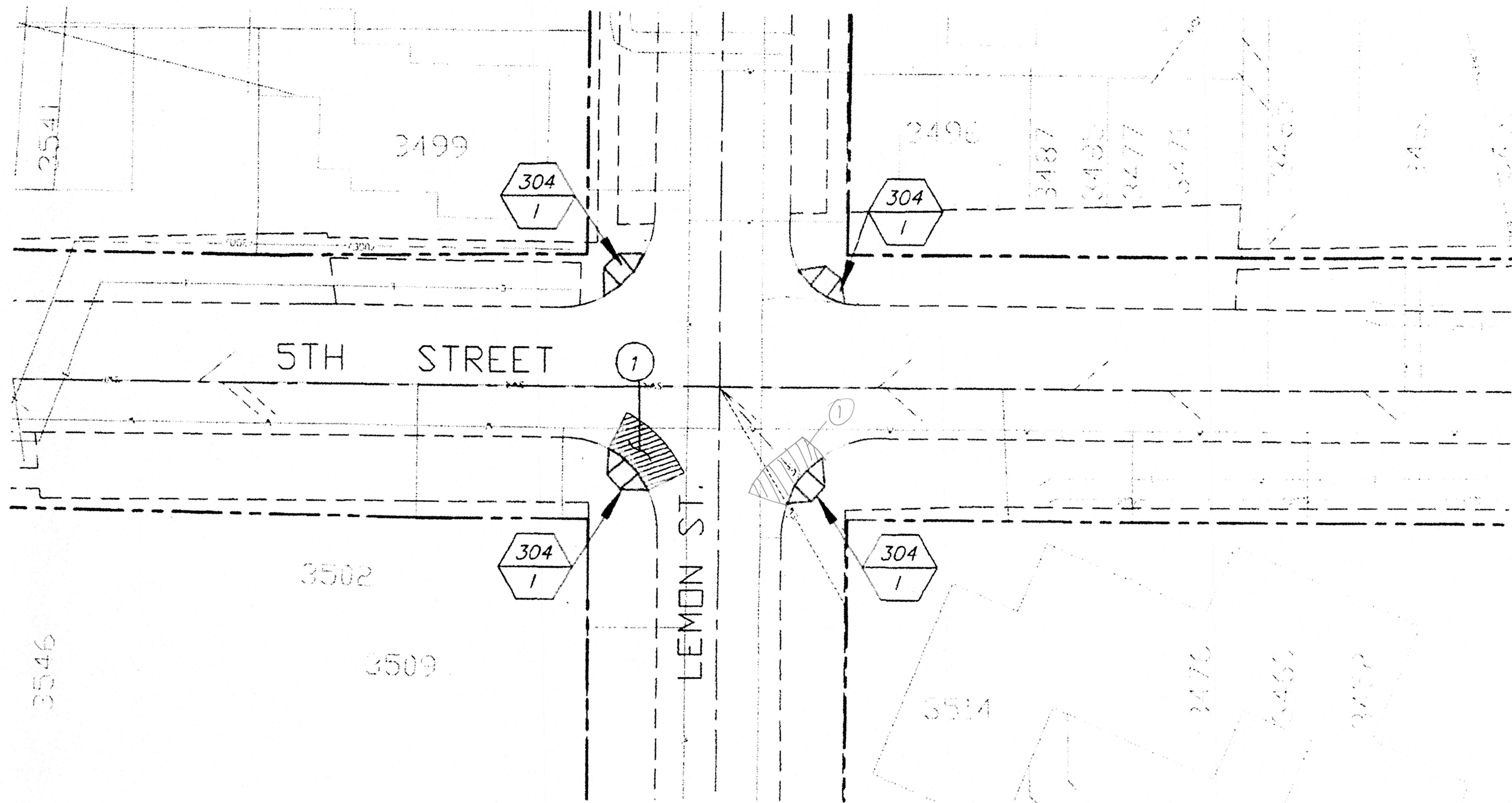


EXHIBIT #7

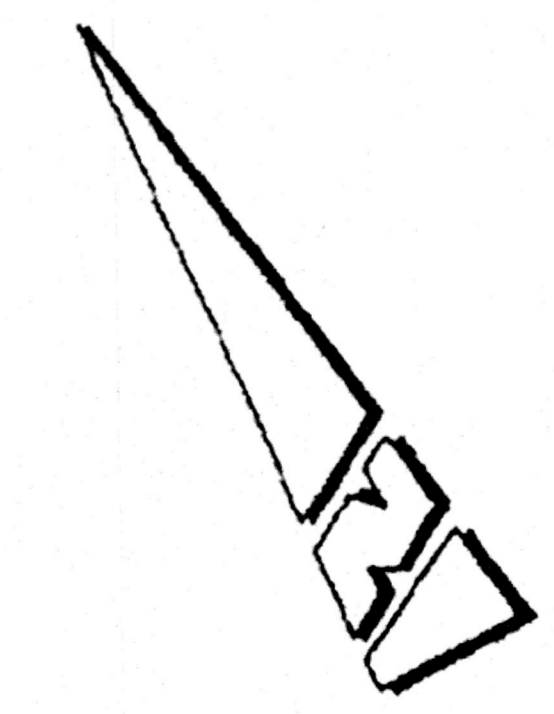


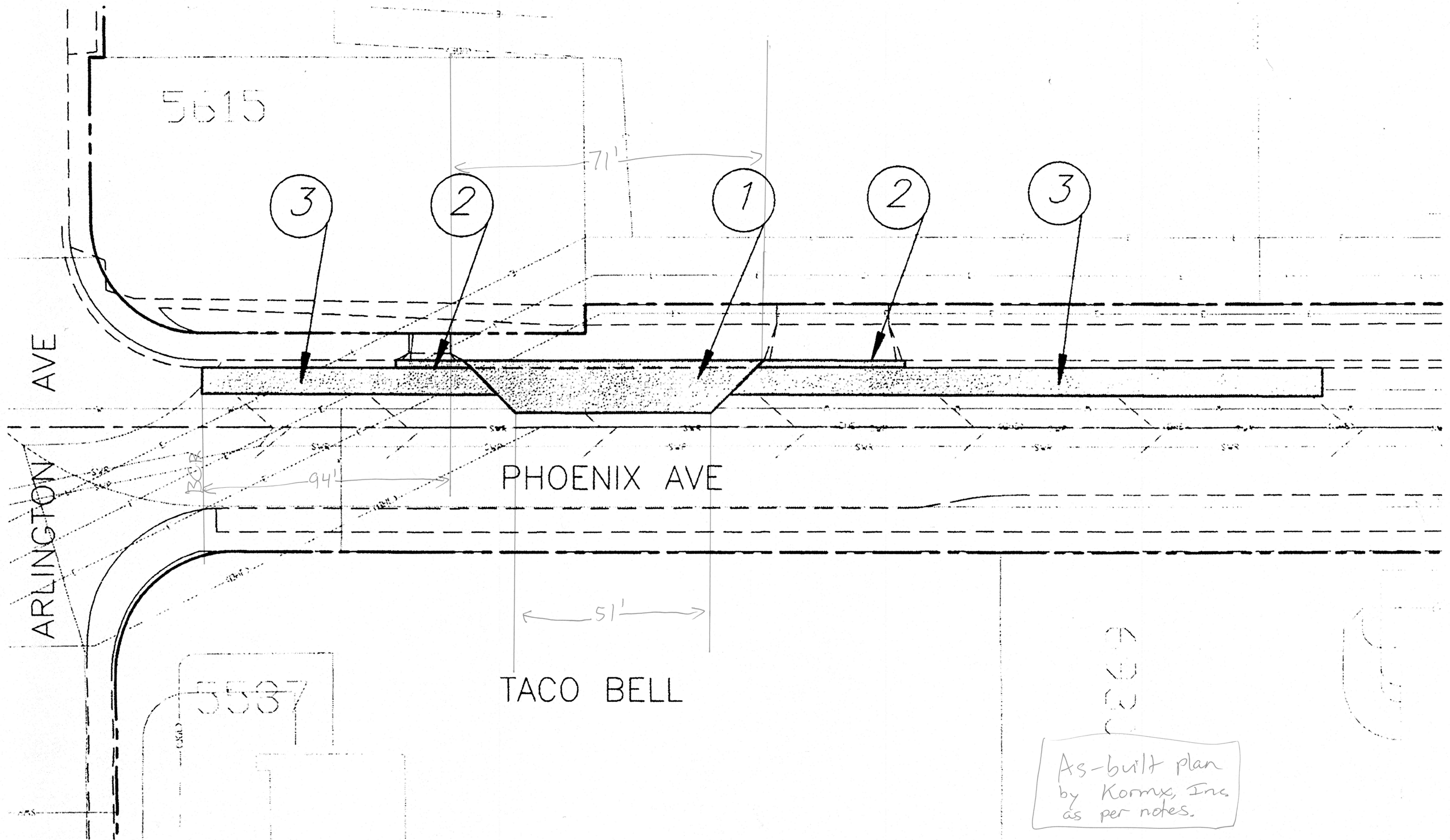


**CONSTRUCTION NOTES:**

- 304 COMPLETELY REMOVE AND DISPOSE OF EXISTING CONCRETE WHEELCHAIR RAMP. CONSTRUCT P.C.C. WHEELCHAIR RAMP PER CITY STANDARD NO. 304.
- 1 R&R 10' WIDE STRIP OF AC PAVEMENT AS SHOWN TO PROVIDE 5% MAXIMUM CROSSFALL.

As-Built plan  
by Korms Inc.  
as per notes.



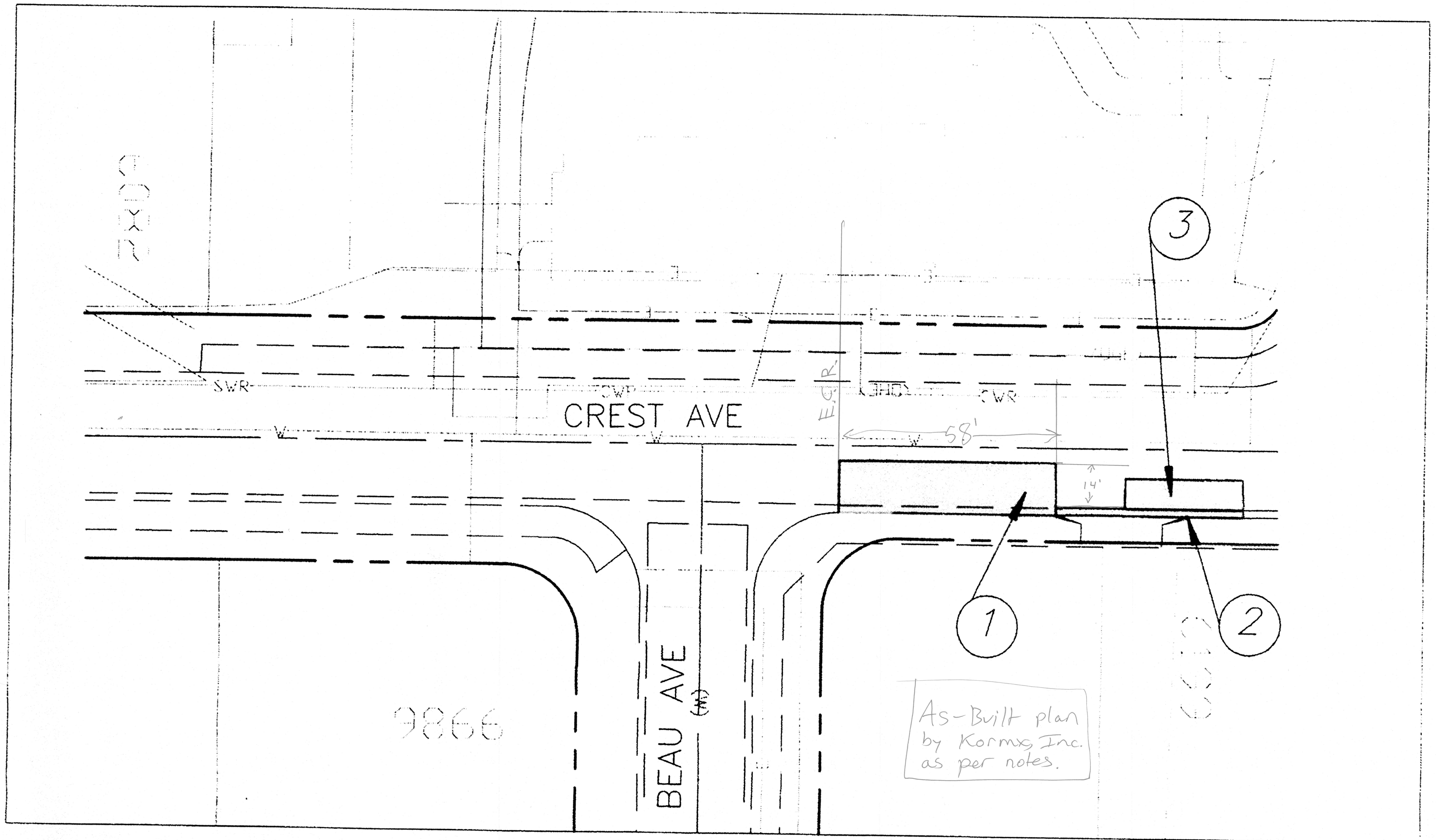


**CONSTRUCTION NOTES:**

- ① CONSTRUCT P.C.C. BUS STOP PAD PER STANDARD BUS STOP PAD DETAIL. PAD IS 1,036 S.F.
- ② REMOVE AND REPLACE P.C.C. CURB AND GUTTER PER CITY STANDARD 200. (H=1"-6") PROPOSED CURB AND GUTTER IS 65 L.F.

- ③ REMOVE AND REPLACE A.C. PAVMENT (7' WIDE X 210' LONG) 6" OVER COMPACTED NATIVE/BASE = 56 TON.

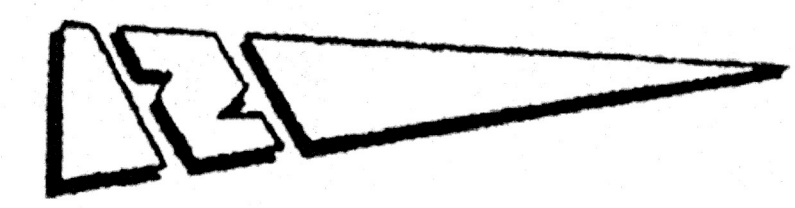
**EXHIBIT #9**



**CONSTRUCTION NOTES:**

- ① CONSTRUCT P.C.C. BUS STOP PAD PER STANDARD BUS STOP PAD DETAIL MODIFIED TO NOT INCLUDE FLARES. PAD IS 840 S.F.
- ② REMOVE AND REPLACE P.C.C. CURB AND GUTTER PER CITY STANDARD 200. (H=1"-6") PROPOSED CURB AND GUTTER IS 50 L.F.

- ③ REMOVE AND REPLACE A.C. PAVMENT (8 WIDE X 26' LONG) 6" OVER COMPACTED NATIVE/BASE = 8 TON.



**EXHIBIT #10**