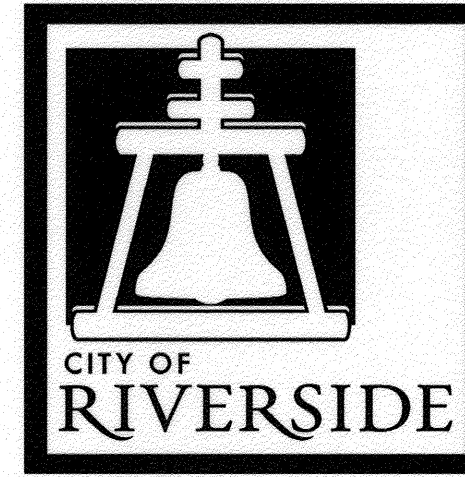


RIVERSIDE



CALIFORNIA

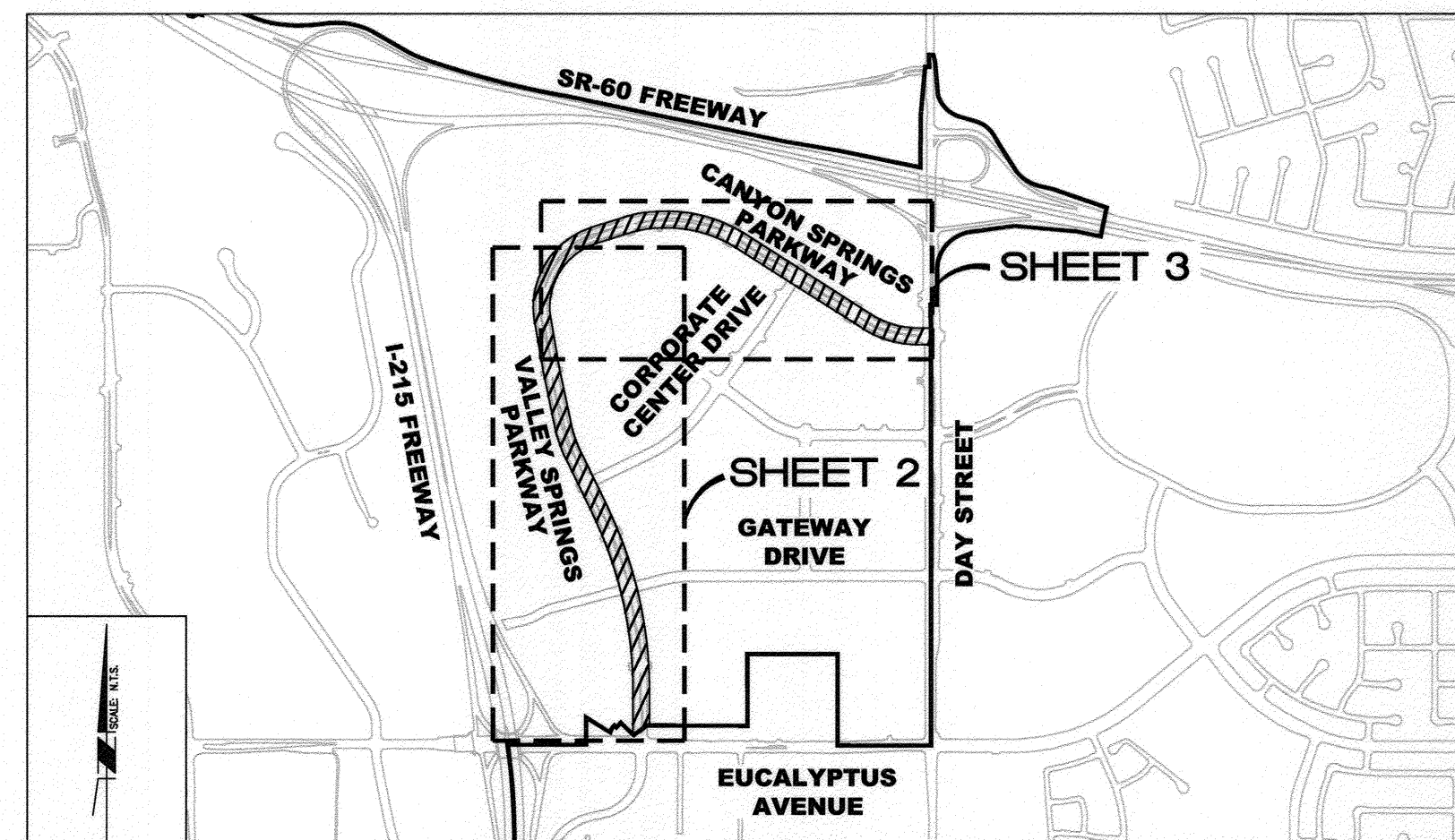
GENERAL CONSTRUCTION NOTES

- 1 THE CONTRACTOR SHALL PROVIDE AND MAINTAIN TRAFFIC AS INDICATED IN THE ASSOCIATED PROJECT SPECIAL PROVISIONS.
- 2 CONSTRUCTION SHALL BE IN ACCORDANCE WITH THE CITY OF RIVERSIDE STANDARD DRAWINGS AND STANDARD SPECIFICATIONS FOR PUBLIC WORKS CONSTRUCTION, 2009 EDITION.
- 3 EXISTING UTILITIES SHOWN ON THIS PLAN ARE PLOTTED FROM UTILITY RECORDS. THE CONTRACTOR IS REQUIRED TO TAKE DUE PRECAUTIONARY MEASURES TO LOCATE AND PROTECT ALL UTILITIES WHETHER OR NOT SHOWN ON THIS PLAN.
- 4 CONFLICTING UTILITIES SHOWN WITHIN CONSTRUCTION AREA WILL BE RELOCATED PRIOR TO CONSTRUCTION.
- 5 ALL STREET PULL BOXES, AFFECTED BY CONSTRUCTION, SHALL BE ADJUSTED TO THE PROPOSED GRADE.
- 6 PRIME CONTRACTOR BIDDING THIS WORK SHALL HAVE A CLASS "A" OR "C-12".
- 7 THE SEAM BETWEEN PASSES OF THE AC OVERLAY SHALL COINCIDE, AS CLOSE AS POSSIBLE, TO THE LANE LINES.
- 8 COLD MILLING SHALL BE AS DESCRIBED ON THE PLANS AND SPECIAL PROVISIONS OR AS DIRECTED BY THE ENGINEER.
- 9 ANY DISTRESSED EXISTING PAVEMENT SHALL BE REMOVED AND REPLACED AS DIRECTED BY THE ENGINEERING AFTER COLD-MILLING AND PRIOR TO PLACEMENT OF DGAC.
- 10 CONTRACTOR SHALL REMOVE ALL VEGETATION WITHIN ALL SIDEWALK PANELS WITHIN THE PROJECT LIMITS.
- 11 ALL EXISTING IMPROVEMENTS SHOWN HEREON SHALL BE PROTECTED IN PLACE UNLESS OTHERWISE NOTED.
- 12 SEE STRIPING IMPROVEMENT PLANS FOR REMOVAL & REPLACEMENT OF EXISTING STRIPING AND SIGN LOOPS.
- 13 EXISTING IRRIGATION SHALL BE PROTECTED OR MODIFIED AS NECESSARY TO CONSTRUCT NEW CONCRETE IMPROVEMENTS.
- 14 ALL FENCE POSTS SHALL BE PROTECTED OR MODIFIED AS NECESSARY IF POST FOUNDATION IS WITHIN A SIDEWALK PANEL THAT HAS BEEN CALLED OUT FOR REPLACEMENT.

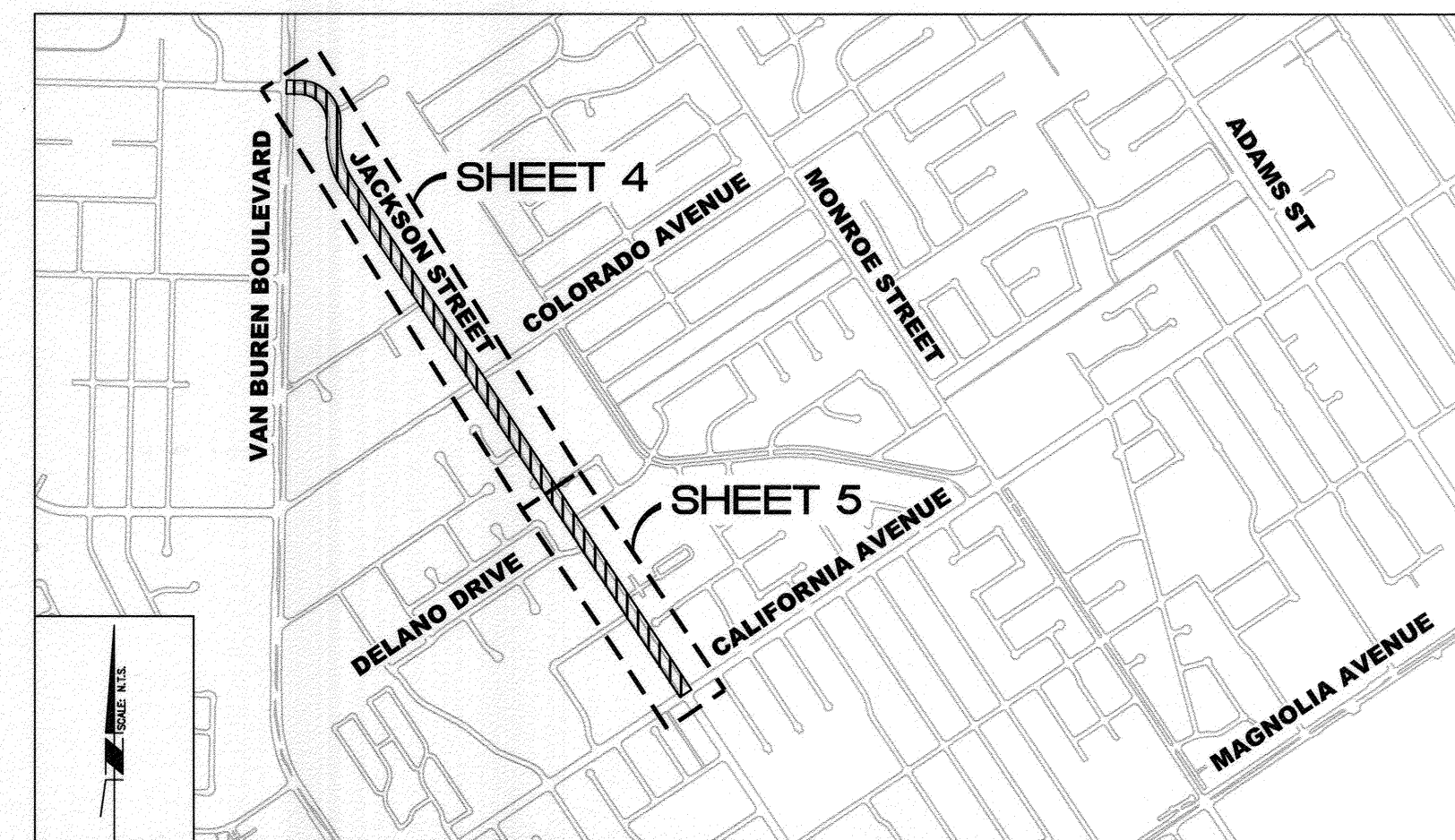
SPECIFIC CONSTRUCTION NOTES

- NUMBERS ABOVE 100 IN A HEXAGON ON THE PLAN REFER TO THE RESPECTIVE STANDARD DRAWING AND SHALL BE CONSTRUCTED ACCORDINGLY, UNLESS MODIFICATIONS ARE NOTED ON THE PLAN OR COVER SHEET. ANY NUMBER SHOWN BELOW THE STANDARD DRAWING NUMBER INDICATES THE SPECIFIC ALTERNATE TO BE CONSTRUCTED.
- ADJUST EXISTING FACILITY TO GRADE. THE FOLLOWING IS THE LEGEND:
GV = GATE VALVE OR GAS VALVE; MH = MANHOLE COVER (ELECTRIC, TELEPHONE, STORM DRAIN OR SEWER); WM = WATER METER
- 10' WIDE UNIFORM 0.12' MINIMUM DEPTH COLD MILL ALONG EDGE OF PROJECT LIMITS. REPLACE WITH 0.12' MINIMUM DEPTH ARHM OVERLAY.
- UNIFORM 0.12' MINIMUM DEPTH COLD MILL AND 0.12' MINIMUM DEPTH ARHM OVERLAY BETWEEN EDGES OF PAVEMENT OR AS OTHERWISE INDICATED ON PLAN.
- UNIFORM 0.32' MINIMUM DEPTH COLD MILL BETWEEN EDGES OF PAVEMENT. REPLACE WITH 0.2' DGAC AND 0.12' MINIMUM DEPTH ARHM OVERLAY.
- REMOVE AND REPLACE EXISTING IMPROVEMENT (XX = IMPROVEMENT PER CITY STANDARDS). THE FOLLOWING IS THE LEGEND:
200 = TYPE 1 CURB AND GUTTER (DIMENSIONS TO MATCH EXISTING);
220 = CROSS GUTTER (WIDTH TO MATCH EXISTING);
302 = DRIVEWAY (TYPE PER PLAN);
325 = SIDEWALK (DIMENSIONS TO MATCH EXISTING);
410 = PARKWAY DRAIN (S=2')
- PROTECT IN PLACE (XX = TYPE PER PLAN). THE FOLLOWING IS THE LEGEND:
CB = CATCH BASIN; SL = STREET LIGHT; PP = POWER POLE;
WM = WATER METER; FH = FIRE HYDRANT; TR = TREE;
RMP = PROTECT IN PLACE EXISTING HANDICAP ACCESSIBLE RAMP;
INLET = CURB SIDE INLET; VLT = VAULT
- CONSTRUCT/RECONSTRUCT WHEELCHAIR RAMP PER CITY STANDARD 304:
I=TYPE I; II=TYPE II; III=TYPE III; IV=TYPE IV;
V=TYPE V; VI=TYPE VI; VII=TYPE VII;
GRD= GRIND EXISTING CONCRETE LIP AT BOTTOM OF RAMP
M1= CONSTRUCT TYPE I RAMP WITH RETAINING CURB ON ONE SIDE ONLY AS INDICATED ON PLAN.
- CONSTRUCT PCC SIDEWALK PER CITY STANDARD 325. PROVIDE A THICKNESS OF 6" ADJACENT TO EXISTING DRIVEWAY APPROACH.
- SAWCUT AND REMOVE THE TOP 24" OF THE EXISTING CATCH BASIN. PROTECT IN PLACE THE EXISTING R.C.P. CONNECTION AND MAINTAIN EXISTING "V" DEPTH. DOWEL INTO EXISTING BOX WALLS. INSTALL REBAR AND CONSTRUCT NEW CATCH BASIN TOP PER CITY STANDARD 405 WITH CURB AND GUTTER.
- REMOVE EXISTING IMPROVEMENT (XX = EXISTING IMPROVEMENT). THE FOLLOWING IS THE LEGEND FOR "XX":
RMP = WHEELCHAIR RAMP
- REMOVE ALL DIRT AND VEGETATION WITHIN ALL SIDEWALK PANELS

PUBLIC WORKS DEPARTMENT PAVEMENT MAINTENANCE PROGRAM FY2012/2013 ARTERIALS MAINTENANCE - PHASE 1A



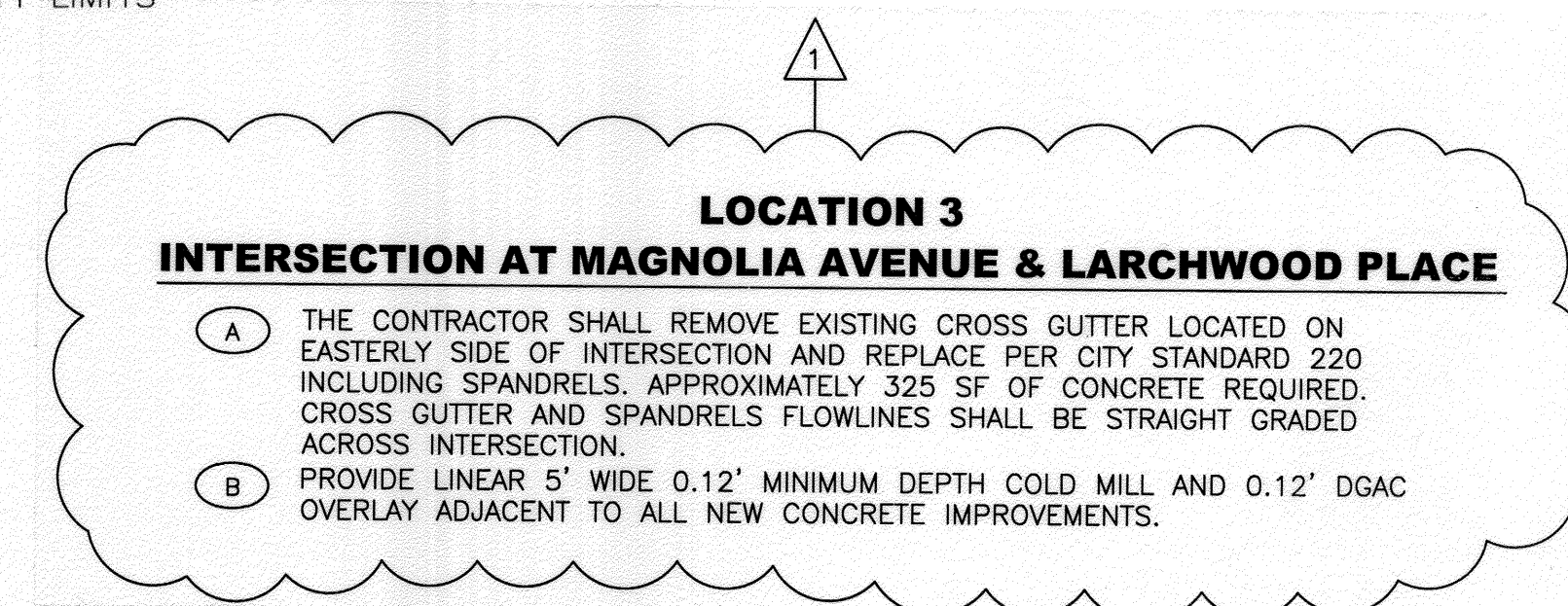
LOCATION 1 MAP / SHEET INDEX
CANYON SPRINGS PARKWAY (EUCALYPTUS - DAY)
N.T.S.



LOCATION 2 MAP / SHEET INDEX
JACKSON STREET (VAN BUREN - CALIFORNIA)
N.T.S.

LEGEND

PROJECT LOCATION
SHEET LIMITS
CITY LIMITS



**** NOTE ****

COLD-IN-PLACE RECYCLING (CIR) IS AN ALTERNATIVE OPTION FOR THE REMOVAL AND REPLACEMENT OF ASPHALT PAVEMENT. THE CITY MAY CHOOSE TO USE THIS METHOD IN ALL AREAS LABELED ON THIS PLAN BY THE NOTATION "CM3/S1".

CONSTRUCTION LEGEND

- | | |
|------------------------------------------------------------|-------------------------------------------------------------|
| CM1/OL (10' WIDE)
COLDMILL TYPE 1
0.12' ARHM OVERLAY | CM3/S1
COLDMILL TYPE 3
REPLACE 0.3' DGAC & 0.12' ARHM |
| CM2/OL
COLDMILL TYPE 2
0.12' ARHM OVERLAY | PROPOSED
CONCRETE
SURFACE |

STREET IMPROVEMENT PLAN INDEX (R-4248)

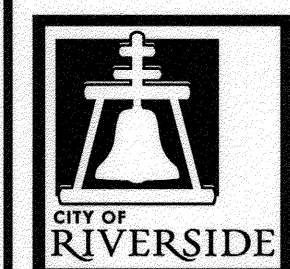
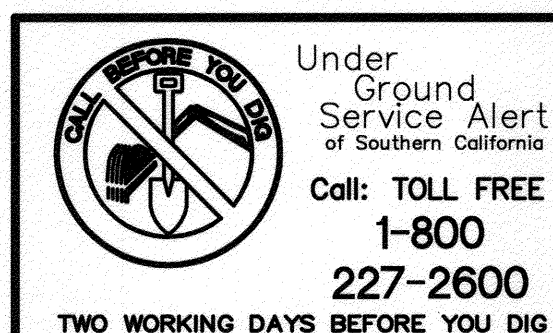
SHEET NO.	DESCRIPTION
1	TITLE SHEET AND NOTES
2	CANYON SPRINGS (EUCALYPTUS - DAY)
3	CANYON SPRINGS (EUCALYPTUS - DAY)
4	JACKSON (VAN BUREN - CALIFORNIA); ALBION (JACKSON - END)
5	JACKSON (VAN BUREN - CALIFORNIA)

STRIPING PLAN INDEX (XL-698 & XL-699)

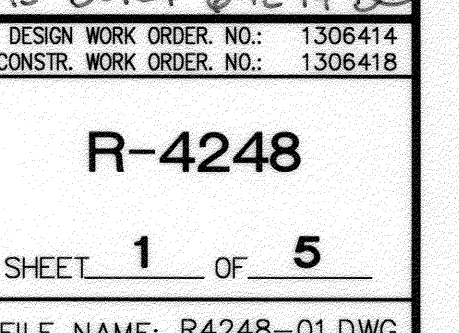
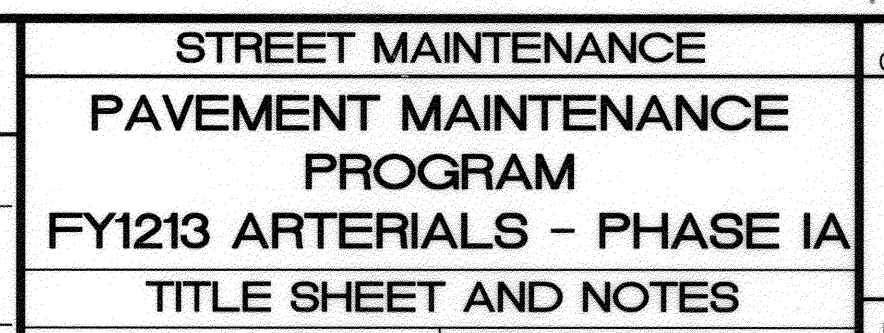
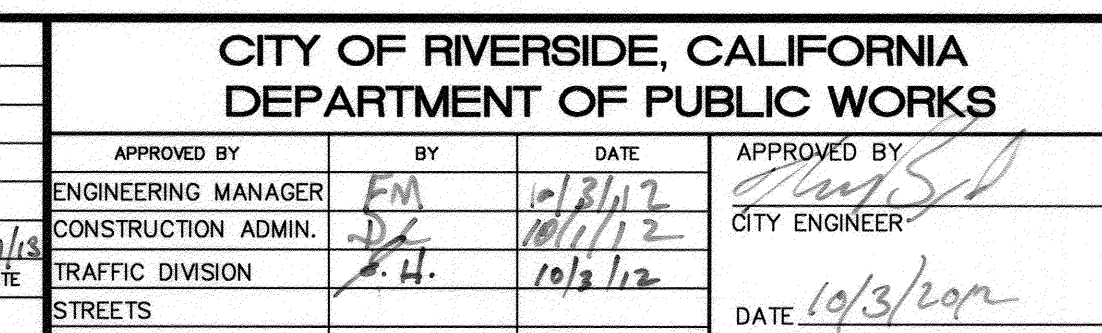
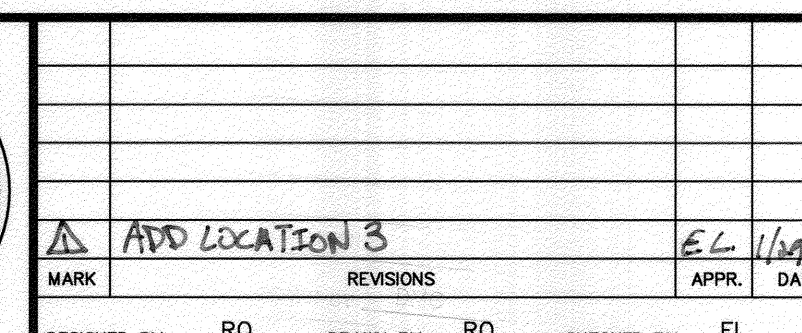
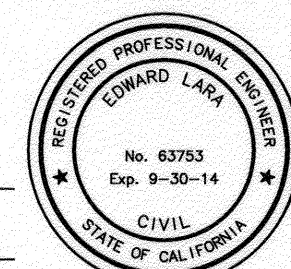
PLAN NO.	# OF SHEETS	DESCRIPTION
XL-698	3	VALLEY SPRINGS PARKWAY (EUCALYPTUS AVENUE- DAY STREET)
XL-700	3	JACKSON STREET (VAN BUREN BOULEVARD- CALIFORNIA AVENUE)

TRAFFIC SIGNAL PLAN INDEX (X-238A)

PLAN NO.	DESCRIPTION
X-238A	TRAFFIC SIGNAL MODIFICATION AT JACKSON STREET AND DELANO DRIVE



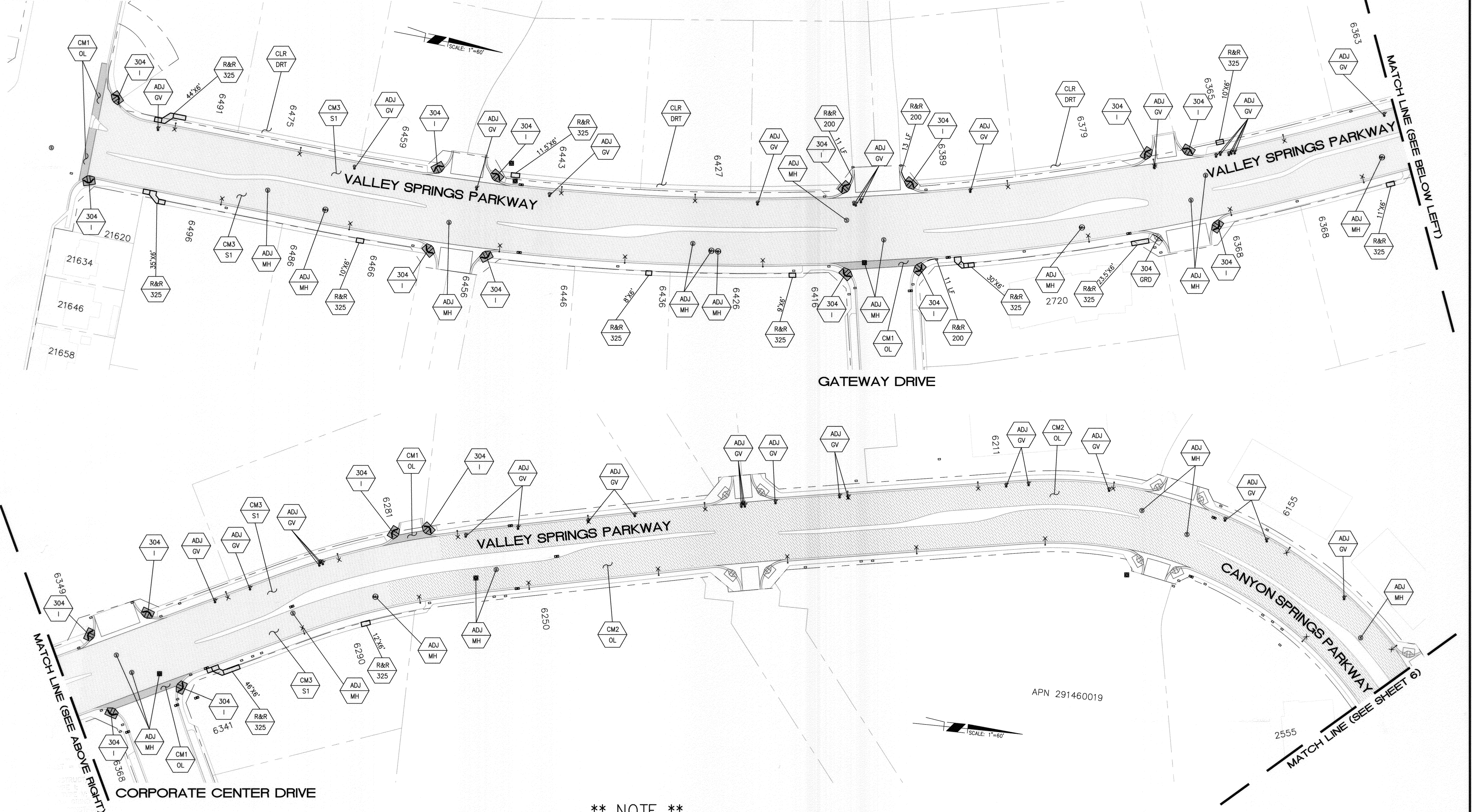
ENGINEER IN
RESPONSIBLE CHARGE
Edward Lara
Edward Lara
R.C.E. No. 63753 EXPIRES: 9-30-14
DATE *September 27, 2013*



FILE NAME: R4248-01.DWG

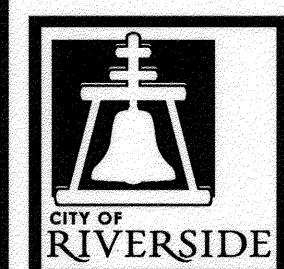
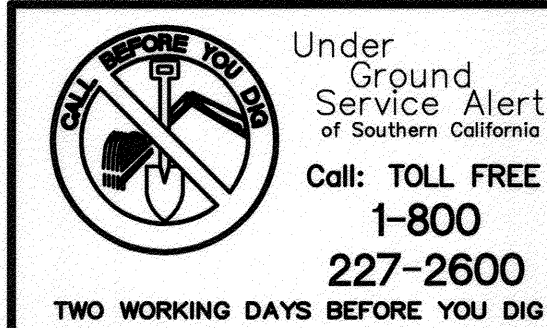
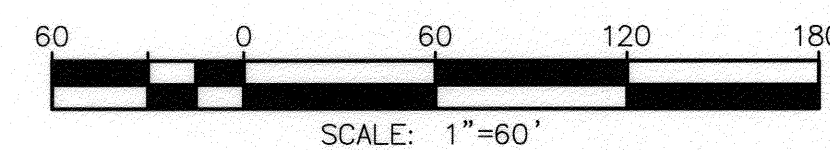
INDEXED 6-12-14 DC

EUCALYPTUS AVENUE

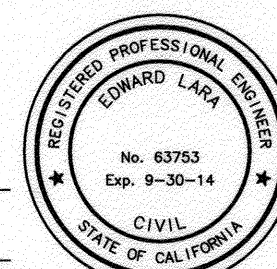


**** NOTE ****

COLD-IN-PLACE RECYCLING (CIR) IS AN ALTERNATIVE OPTION FOR THE REMOVAL AND REPLACEMENT OF ASPHALT PAVEMENT. THE CITY MAY CHOOSE TO USE THIS METHOD IN ALL AREAS LABELED ON THIS PLAN BY THE NOTATION "CM3/S1".



ENGINEER IN RESPONSIBLE CHARGE
Edward Lara
Edward Lara
R.C.E. No. 63753 EXPIRES: 9-30-14
DATE: September 27, 2012

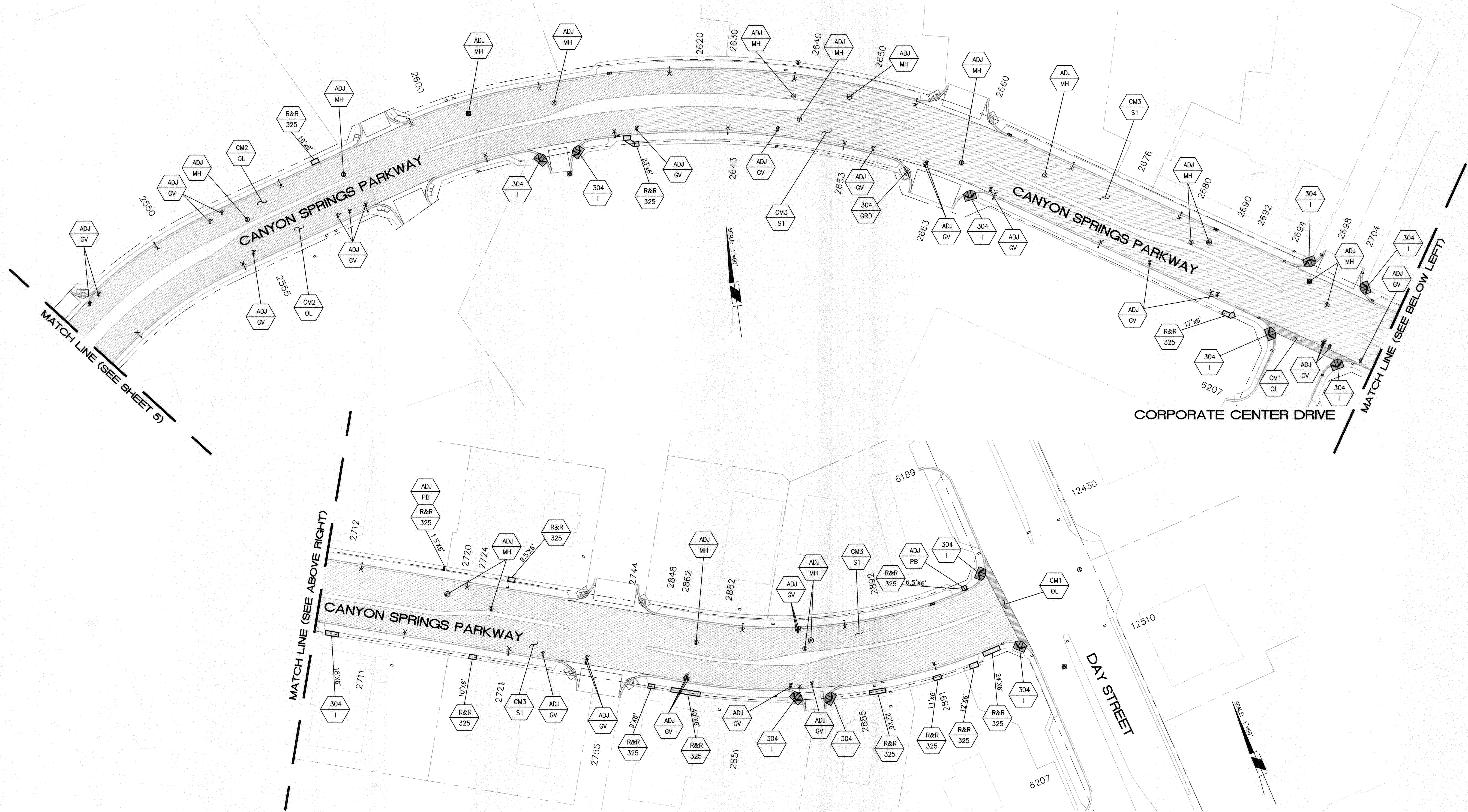


MARK	REVISIONS	APPR.	DATE
DESIGNED BY	RO	DRAWN BY	RO
CHECKED BY	EL		

CITY OF RIVERSIDE, CALIFORNIA DEPARTMENT OF PUBLIC WORKS			
APPROVED BY	BY	DATE	APPROVED BY
ENGINEERING MANAGER	FM	10/31/12	CITY ENGINEER
CONSTRUCTION ADMIN.	SC	10/11/12	
TRAFFIC DIVISION		10/3/12	
STREETS			

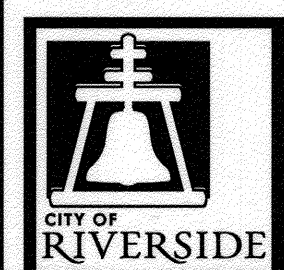
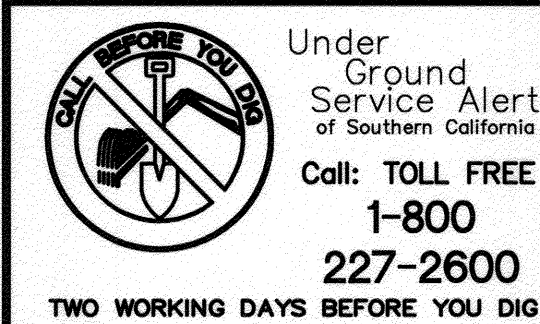
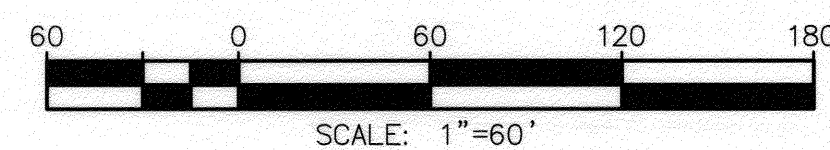
STREET MAINTENANCE PAVEMENT MAINTENANCE PROGRAM FY1213 ARTERIALS - PHASE IA CANYON SPRINGS (EUCALYPTUS - DAY)	
HORIZ. SCALE: 1"=60'	VERT. SCALE: NA

DESIGN ORDER NO.: 1306414 CONSTR. WORK ORDER NO.: 1306418
R-4248
SHEET 2 OF 5
FILE NAME: R4248-02.DWG

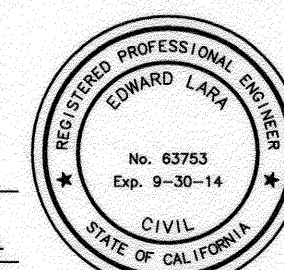


**** NOTE ****

COLD-IN-PLACE RECYCLING (CIR) IS AN ALTERNATIVE OPTION FOR THE REMOVAL AND REPLACEMENT OF ASPHALT PAVEMENT. THE CITY MAY CHOOSE TO USE THIS METHOD IN ALL AREAS LABELED ON THIS PLAN BY THE NOTATION "CM3/S1".



ENGINEER IN RESPONSIBLE CHARGE
Edward Lara
 Edward Lara
 R.C.E. No. 63753 EXPIRES: 9-30-14
 DATE: September 27, 2014



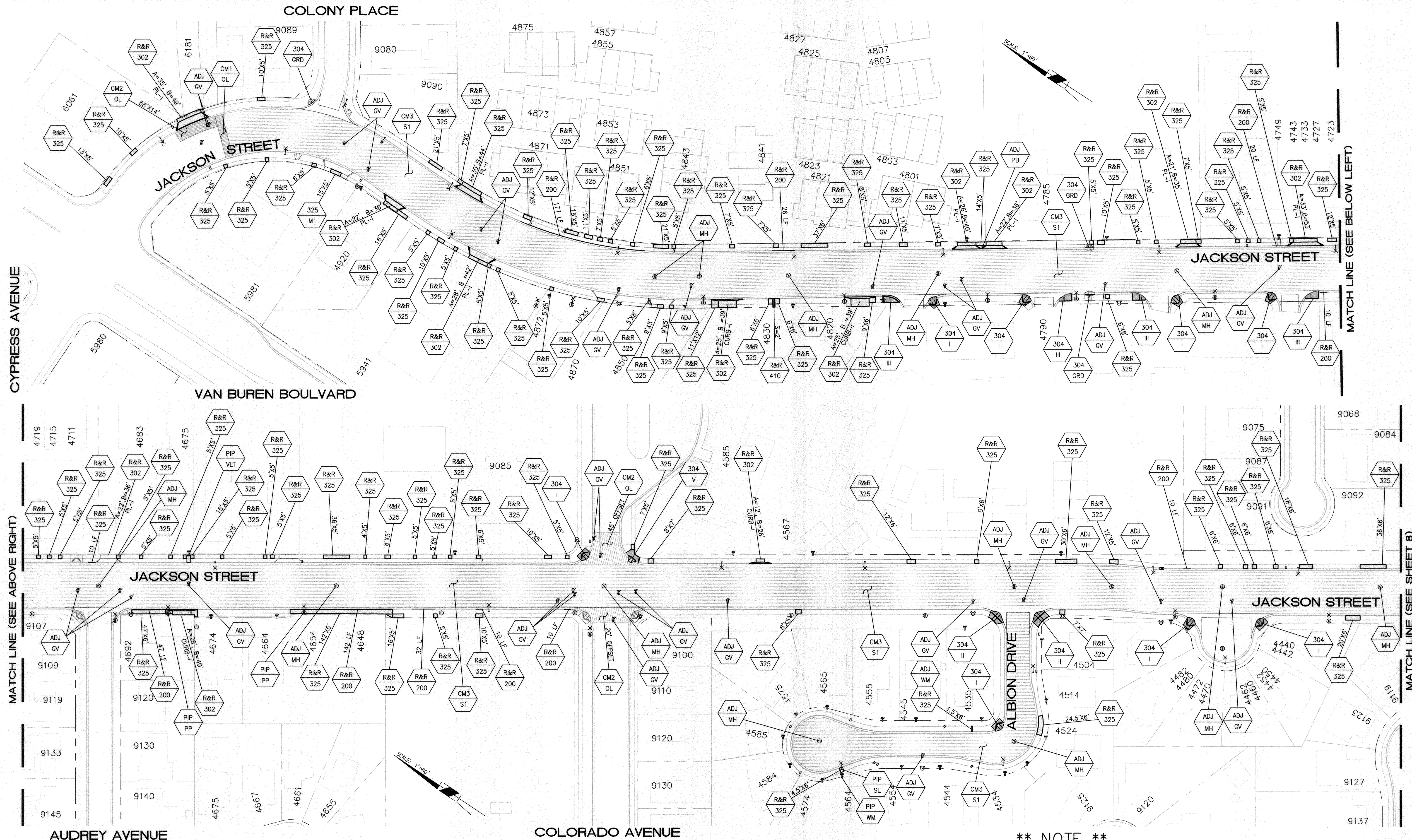
MARK	REVISIONS	APPR.	DATE
DESIGNED BY	RO	DRAWN BY	RO
CHECKED BY	EL		

**CITY OF RIVERSIDE, CALIFORNIA
 DEPARTMENT OF PUBLIC WORKS**

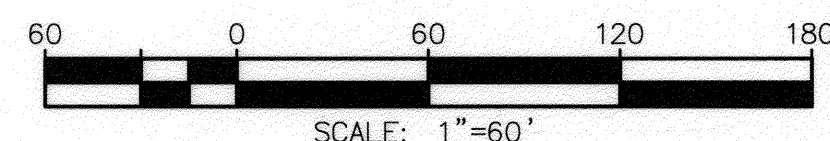
APPROVED BY	BY	DATE	APPROVED BY
ENGINEERING MANAGER	FM	10/3/12	CITY ENGINEER
CONSTRUCTION ADMIN.	DC	10/11/12	
TRAFFIC DIVISION	E.H.	10/12/12	
STREETS			DATE: 10/3/2012

**STREET MAINTENANCE
 PAVEMENT MAINTENANCE
 PROGRAM
 FY1213 ARTERIALS - PHASE 1A
 CANYON SPRINGS (EUCALYPTUS - DAY)**
 HORIZ. SCALE: 1"=60' VERT. SCALE: NA

DESIGN WORK ORDER NO.: 1306414
 CONSTR. WORK ORDER NO.: 1306418
R-4248
 SHEET **3** OF **5**
 FILE NAME: R4248-03.DWG



**** NOTE ****
COLD-IN-PLACE RECYCLING (CIR) IS AN ALTERNATIVE OPTION FOR THE REMOVAL AND REPLACEMENT OF ASPHALT PAVEMENT. THE CITY MAY CHOOSE TO USE THIS METHOD IN ALL AREAS LABELED ON THIS PLAN BY THE NOTATION "CM3/S1", EXCLUDING THE PAVEMENT SECTION ON ALBION DRIVE.



Under Ground Service Alert
Call: TOLL FREE 1-800-227-2600
TWO WORKING DAYS BEFORE YOU DIG

ENGINEER IN RESPONSIBLE CHARGE
Edward Lara
R.C.E. No. 63753 EXPIRES: 9-30-14
DATE: September 27, 2014

MARK	REVISIONS	APPR.	DATE

**CITY OF RIVERSIDE, CALIFORNIA
DEPARTMENT OF PUBLIC WORKS**

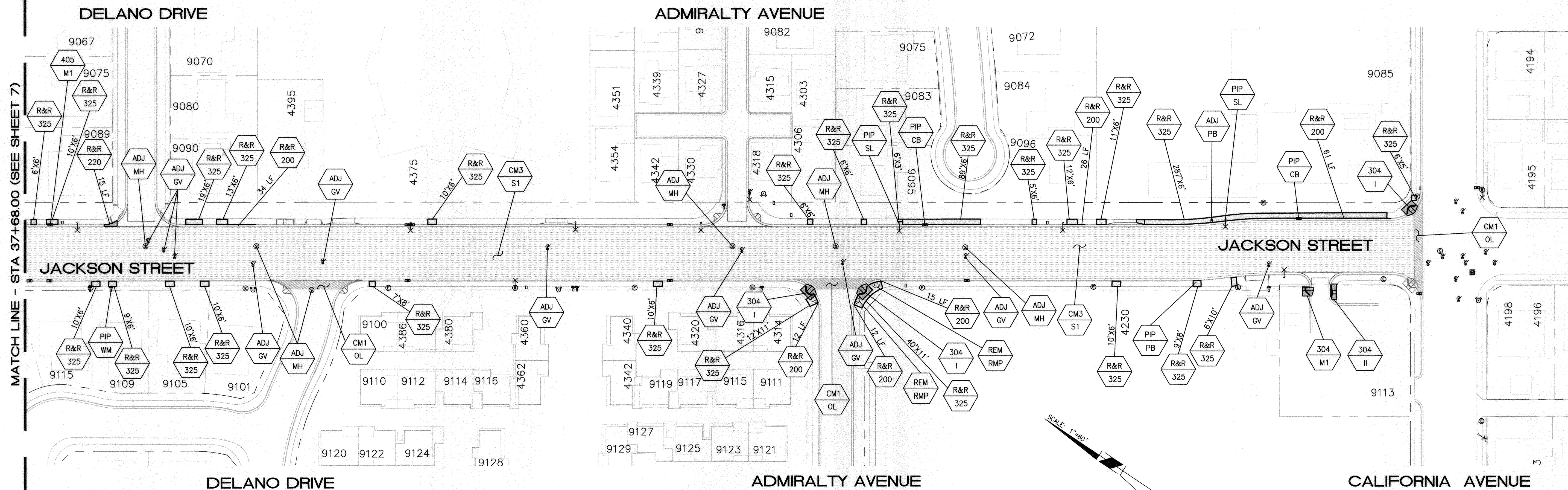
APPROVED BY	BY	DATE	APPROVED BY
ENGINEERING MANAGER	Fm	10/31/12	
CONSTRUCTION ADMIN.	PS	11/11/12	CITY ENGINEER
TRAFFIC DIVISION		10/31/12	
STREETS			

DESIGNED BY: RO DRAWN BY: RO CHECKED BY: EL

**STREET MAINTENANCE
PAVEMENT MAINTENANCE
PROGRAM
FY1213 ARTERIALS - PHASE 1A
JACKSON (VAN BUREN - CALIFORNIA)**

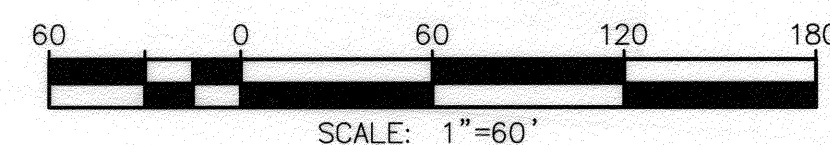
HORIZ. SCALE: 1"=60' VERT. SCALE: NA

DESIGN WORK ORDER NO.: 1306414
CONSTR. WORK ORDER NO.: 1306418
R-4248
SHEET **4** OF **5**
FILE NAME: R4248-04.DWG

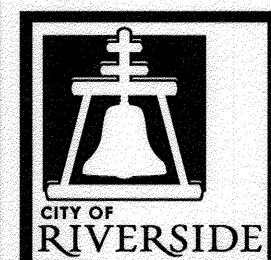


**** NOTE ****

COLD-IN-PLACE RECYCLING (CIR) IS AN ALTERNATIVE OPTION FOR THE REMOVAL AND REPLACEMENT OF ASPHALT PAVEMENT. THE CITY MAY CHOOSE TO USE THIS METHOD IN ALL AREAS LABELED ON THIS PLAN BY THE NOTATION "CM3/S1".

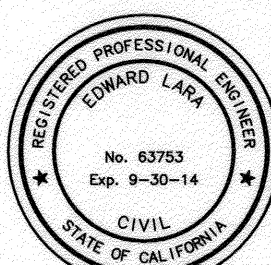


Under Ground Service Alert
of Southern California
Call: TOLL FREE
1-800
227-2600
TWO WORKING DAYS BEFORE YOU DIG



ENGINEER IN
RESPONSIBLE CHARGE

Edward Lara
Edward Lara
R.C.E. No. 63753 EXPIRES: 9-30-14
DATE: September 27, 2013



MARK	REVISIONS	APPR.	DATE
DESIGNED BY	RO	DRAWN BY	RO
CHECKED BY	EL		

CITY OF RIVERSIDE, CALIFORNIA
DEPARTMENT OF PUBLIC WORKS

APPROVED BY	BY	DATE	APPROVED BY
ENGINEERING MANAGER	FM	10/3/12	CITY ENGINEER
CONSTRUCTION ADMIN.			
TRAFFIC DIVISION			
STREETS			

STREET MAINTENANCE
PAVEMENT MAINTENANCE
PROGRAM
FY1213 ARTERIALS - PHASE 1A
JACKSON (VAN BUREN - CALIFORNIA)

HORIZ. SCALE: 1"=60' VERT. SCALE: NA

DESIGN WORK ORDER NO.: 1306414
CONSTR. WORK ORDER NO.: 1306418
R-4248
SHEET 5 OF 5
FILE NAME: R4248-05.DWG