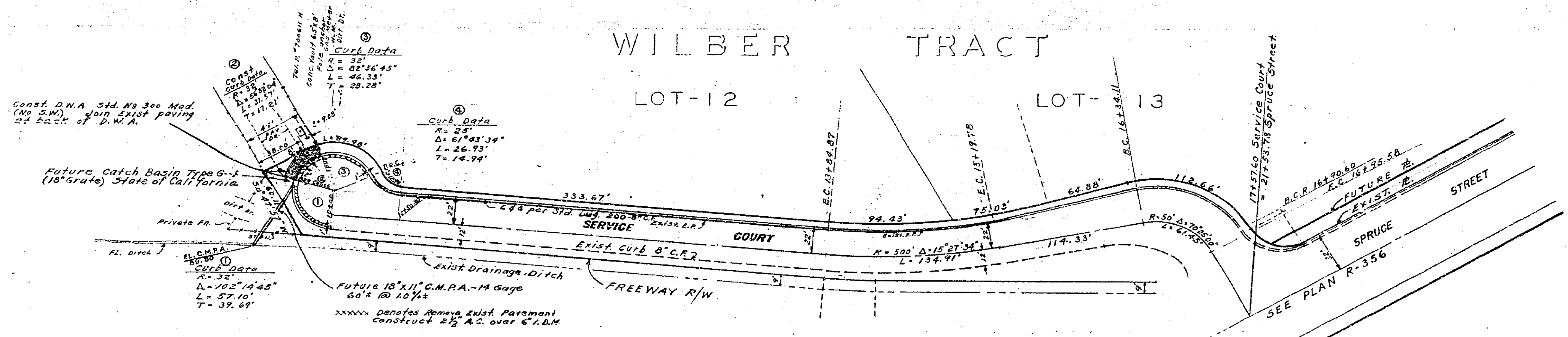


B.M. = 897.55 - Stone Div. of Highways conc. mns. with brass top on S.W. side of Spruce St. at sta. 15+03, approx. 13' off E. Spruce St. near comb. P. N. 4941-J

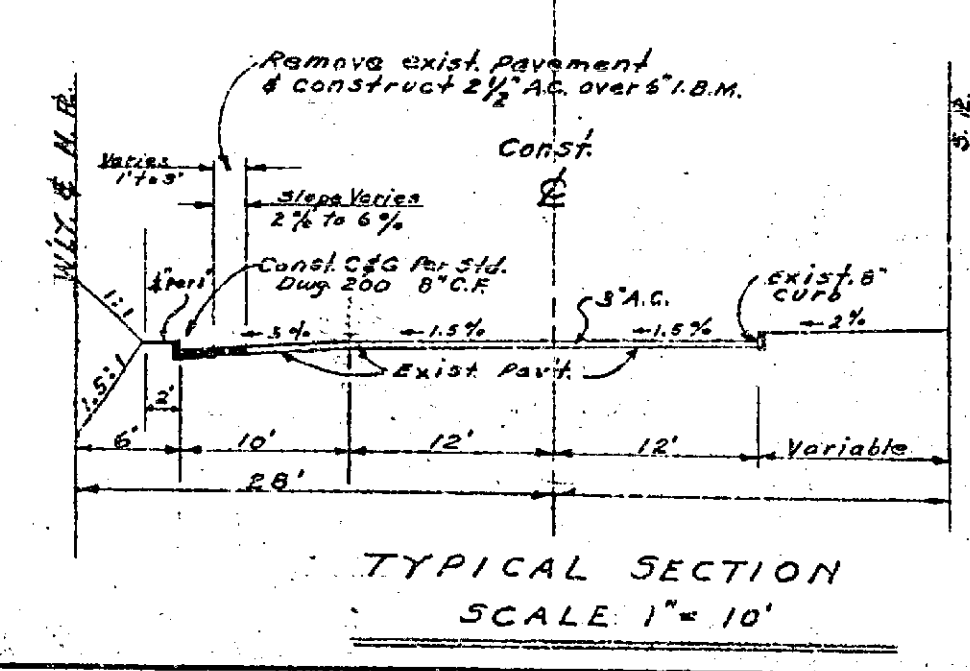
F.B. = 12x18, U-2/22, 23, 24

SCALE = Horiz. 1" = 50' Vert. 1" = 3'

PROJECT	DATE
APPROVED	
NOTED	
DESIGNED	
DRAWN	
CHECKED	
RECOMMENDED	



NOTE: All construction shall be in accordance with the Standards and Specifications No. 461 of the City of Riverside, Dept. of Public Works.



PLAN	DATE
APPROVED	
NOTED	
DESIGNED	
DRAWN	
CHECKED	
RECOMMENDED	

REVISIONS		CITY OF RIVERSIDE CALIFORNIA DEPARTMENT OF PUBLIC WORKS	
MARK	DATE	DESCRIPTION	
			SERVICE COURT
			WESTERLY FROM SPRUCE STREET AT FREEWAY OVERCROSSING
DESIGNED BY	D.H.A.	CHECKED BY	<i>[Signature]</i>
DRAWN BY	S.C. M.H.	APPROVED BY	<i>[Signature]</i>
RECOMMENDED BY	<i>[Signature]</i>	DIRECTOR OF PUBLIC WORKS	R-487
ASSISTANT CITY ENGINEER		DATE	1-11-62
		SHEET	OF 1