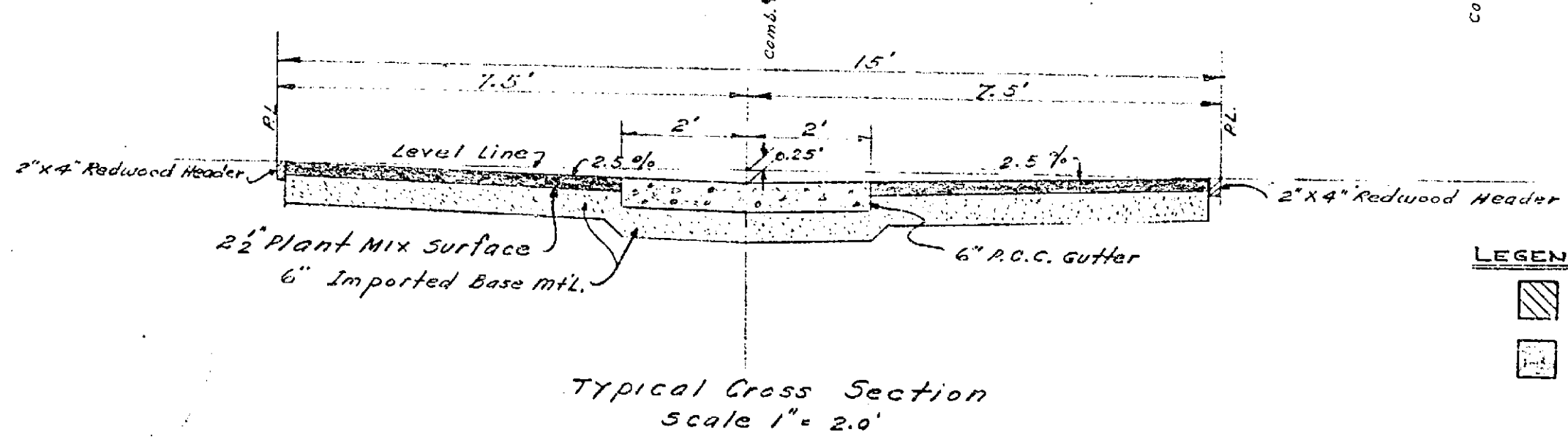
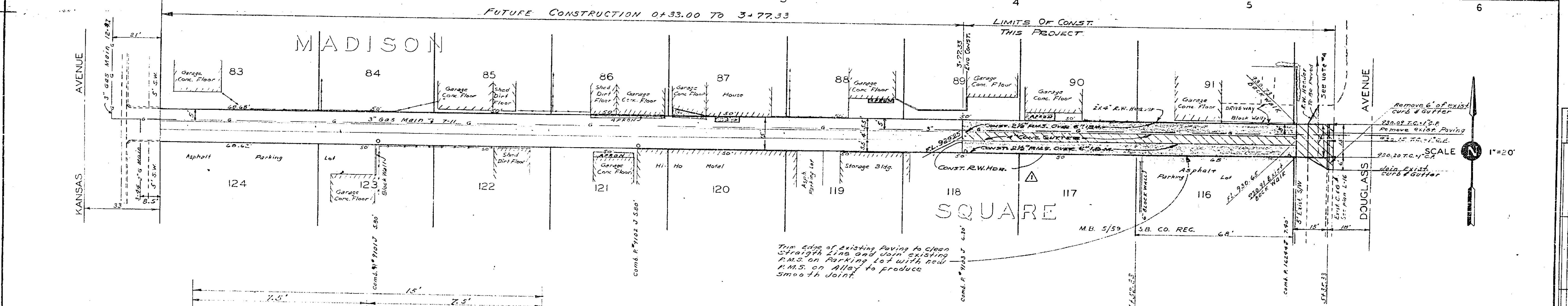
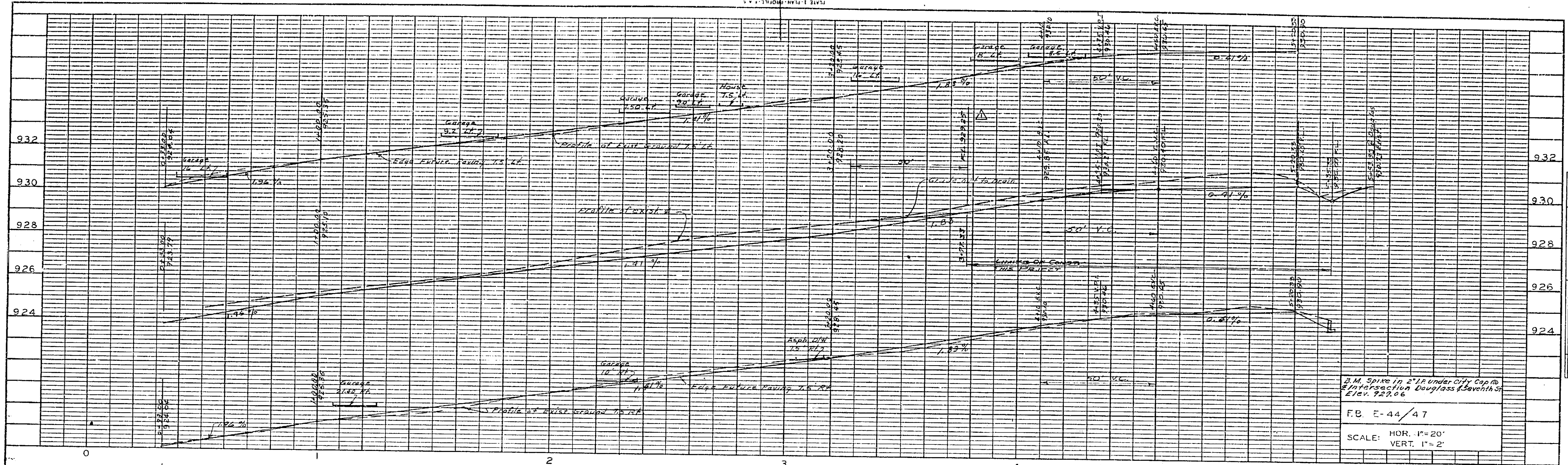


DATE: 11/15/61
DRAWN BY: W.J.G.-D.R.B.
CHECKED BY: W.J.G.-D.R.B.
APPROVED BY: G.R. J...
DIRECTOR OF PUBLIC WORKS



LEGEND

- CONST. CONC. VALLEY GUTTER
- CONST. 2 1/2" R.M.S. OVER 6" I.B.M.

NOTES:

1. All construction shall be in accordance with Standards and Specifications No. 461 of the City of Riverside Dept. of Public Works.
2. Redwood Headers required at edge of A.M.S. wherever edge is not protected by other structural materials, such as existing pavement concrete, etc.
3. PRIME COAT AND PAINT BINDER WILL BE REQUIRED.
4. GRADE TO DRAIN TO EXIST. CURB RETURN AT 7th STREET.
5. CONST. D/W APPROACH PER STD. DWG. #302 A-15, B-29

| REVISIONS | | | CITY OF RIVERSIDE CALIFORNIA DEPARTMENT OF PUBLIC WORKS | |
|-------------|---------------|--|--|----------------|
| MARK | DATE | DESCRIPTION | ALLEY KANSAS AVE. TO DOUGLASS AVE. BETWEEN SEVENTH ST. & EIGHTH ST. | |
| Δ | 3-27-61 | EXTEND LIMITS OF CONST. TO STA. 3+77.33 A.W. 1965 O.A.P. 210 | APPROVED BY: DIRECTOR OF PUBLIC WORKS R-493 SHEET 1 OF 1 | |
| DESIGNED BY | D.R.B. | CHECKED BY | | |
| DRAWN BY | W.J.G.-D.R.B. | RECOMMENDED BY | | DATE: 11/15/61 |

| | | |
|-----|------|-----------|
| NO. | DATE | REVISIONS |
| | | |
| | | |