

**CAUTION**  
 30" High Pressure  
 Gas Main

**CAUTION**  
 30" High Pressure  
 Gas Main

IMP CURVE DATA:  
 $\Delta = 42^\circ 29' 47''$   
 $R = 700'$   
 $L = 519.15'$   
 $T = 272.15'$

IMP CURVE DATA:  
 $\Delta = 34^\circ 29' 47''$   
 $R = 700'$   
 $L = 445.89'$   
 $T = 230.80'$

**BENCH MARK**  
 2x nail in 5th curb Arlington Ave. W. West  
 of curb Return B.C.R. of Victoria Ave.  
 E.L. 966.316. F.B. 11/1.

REVISION		
MARK	DATE	DESCRIPTION

**ALBERT A. WEBB ASSOCIATES**  
 CIVIL ENGINEERS - RIVERSIDE, CALIFORNIA  
 APPROVED: *Ernest N. Webb* DATE 4-25-63  
 19976

**CITY OF RIVERSIDE, CALIFORNIA**  
 DEPARTMENT OF PUBLIC WORKS

**PLAN AND PROFILE**  
**ARLINGTON AVE.**  
 BETWEEN  
 VICTORIA AVE. & ALESSANDRO  
 BLVD.

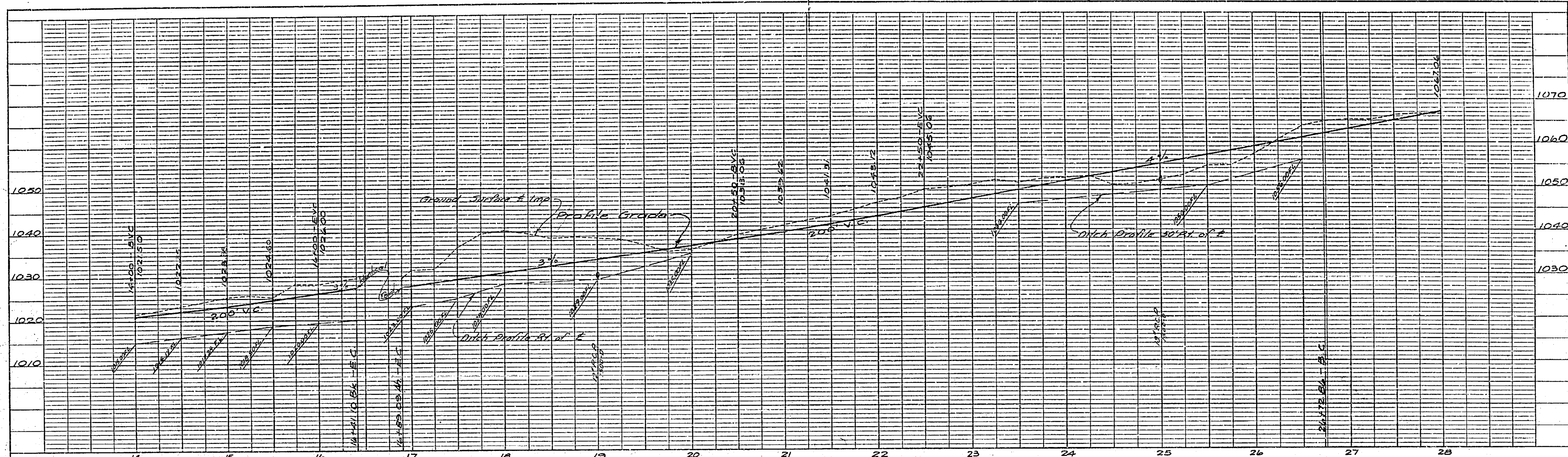
DATE: 3/16/61  
 DRAWN: AB1  
 CHECKED: I-J-K-LL  
 CITY OF RIVERSIDE

SCALE: HORIZ. 1" = 50'  
 VERT. 1" = 5'  
 APPROVED BY: *Ernest N. Webb*  
 DIRECTOR OF PUBLIC WORKS  
 DATE: 7-23-63  
 SHEET 2 OF 11

PROFILE  
 NO. 1020  
 1010  
 1000  
 990  
 1020  
 1015  
 1010

PLAN  
 NO. 1020  
 1010  
 1000  
 990  
 1020  
 1015  
 1010

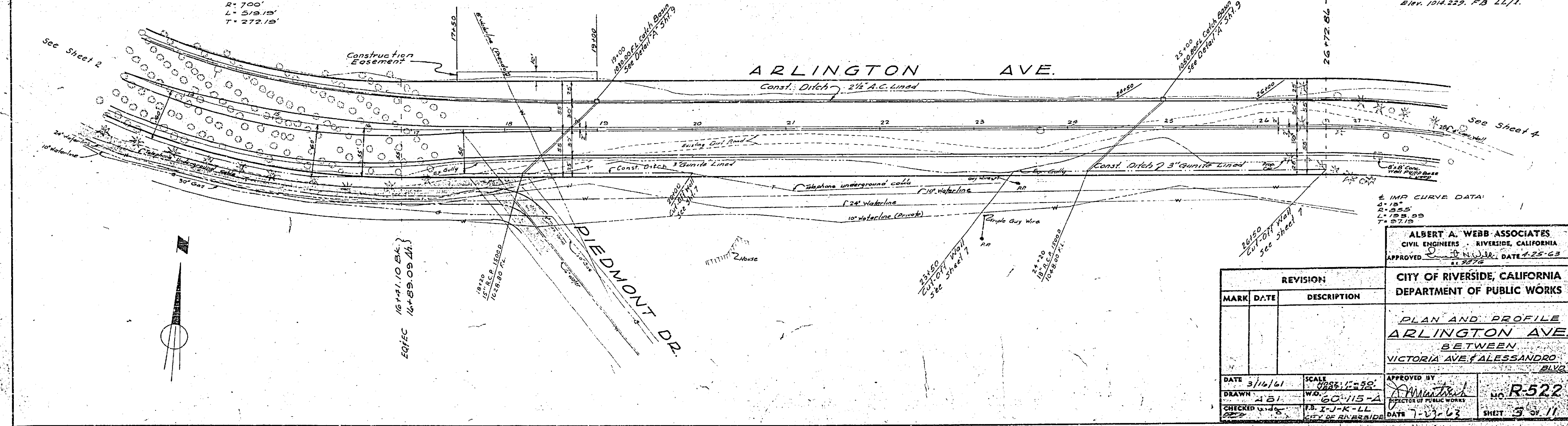
PLATE 1 PLAN, PROFILE & IMP. STANDARDS  
 R. C. CO., INC. 347 1/2 W. 4TH ST. NEW YORK, N. Y.  
 RUFFEL & RICE CO., NEW YORK



PROFILE	
DATE	7-23-63
SCALE	1"=20'
PROJECT	PLAN AND PROFILE OF ARLINGTON AVE. BETWEEN VICTORIA AVE. & ALESSANDRO BLVD.
NO. OF SHEETS	11
SHEET NO.	3

± IMP CURVE DATA  
 Δ = 42° 29' 47"  
 R = 700'  
 L = 519.19'  
 T = 272.19'

BENCH MARK  
 R.R. spike in Palm Tree Way,  
 side Hangman Dr. 15' S of  
 Quacken Dr.  
 Elev. 1044.22, FB LL/1.



PLAN	
DATE	7-23-63
SCALE	1"=20'
PROJECT	PLAN AND PROFILE OF ARLINGTON AVE. BETWEEN VICTORIA AVE. & ALESSANDRO BLVD.
NO. OF SHEETS	11
SHEET NO.	3

ALBERT A. WEBB ASSOCIATES  
 CIVIL ENGINEERS RIVERSIDE, CALIFORNIA  
 APPROVED *[Signature]* DATE 7-25-63

CITY OF RIVERSIDE, CALIFORNIA  
 DEPARTMENT OF PUBLIC WORKS

PLAN AND PROFILE  
 ARLINGTON AVE.  
 BETWEEN  
 VICTORIA AVE. & ALESSANDRO  
 BLVD.

REVISION	
MARK	DESCRIPTION

DATE 3/16/61  
 DRAWN A.B.I.  
 CHECKED J.K.S.  
 SCALE 1"=20'  
 W.O. 60-115-A  
 P.E. J-J-R-LL  
 CITY OF RIVERSIDE  
 DATE 7-23-63

APPROVED BY *[Signature]*  
 PROJECT ENGINEER  
 NO. R-522  
 SHEET 3 of 11

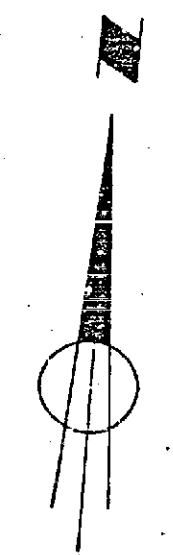
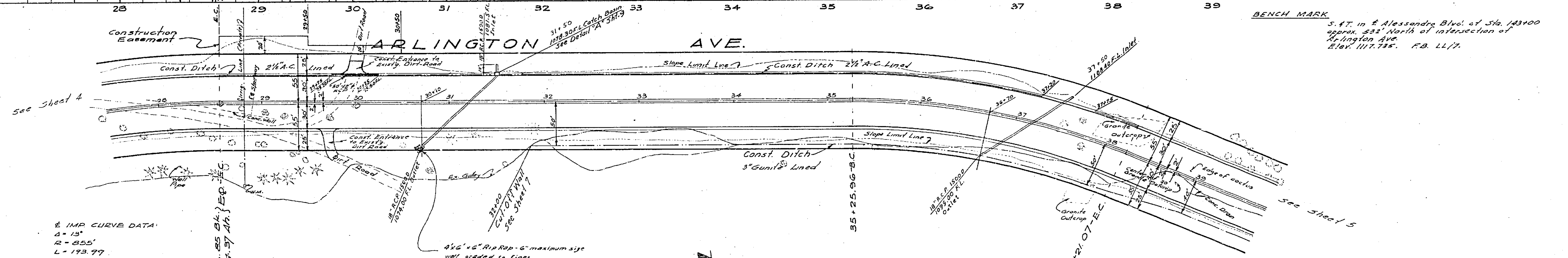
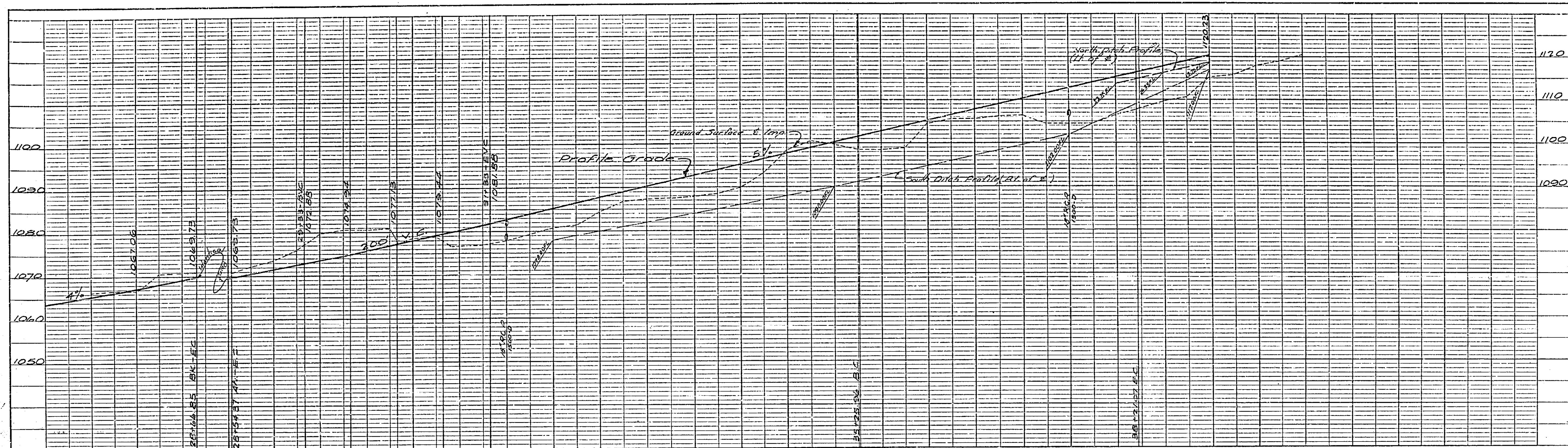
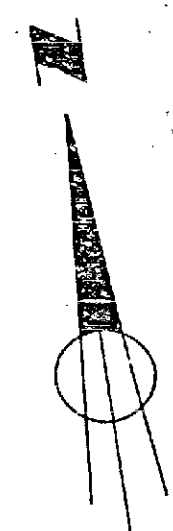


PLATE 1 - PLAN, PROFILE OF P. M. & E. STANBRO  
 ENGINEERS & ARCHITECTS  
 1001 W. 11th St. - RIVERSIDE, CALIF.



IMP CURVE DATA:  
 R = 13'  
 Q = 855'  
 L = 193.97'  
 T = 77.17'

IMP CURVE DATA:  
 R = 24' 09" 15"  
 Q = 700'  
 L = 295.11'  
 T = 149.78'



PROFILE	DATE
1/31	3/17/61

PLAN	DATE
1/31	3/17/61

ALBERT A. WEBB ASSOCIATES  
 CIVIL ENGINEERS - RIVERSIDE, CALIFORNIA  
 APPROVED: *[Signature]* DATE 6-25-63

REVISION		DESCRIPTION
MARK	DATE	

CITY OF RIVERSIDE, CALIFORNIA  
 DEPARTMENT OF PUBLIC WORKS

PLAN AND PROFILE  
 ARLINGTON AVE.  
 BETWEEN  
 VICTORIA AVE. & ALESSANDRO  
 BLVD.

APPROVED BY: *[Signature]*  
 DIRECTOR OF PUBLIC WORKS

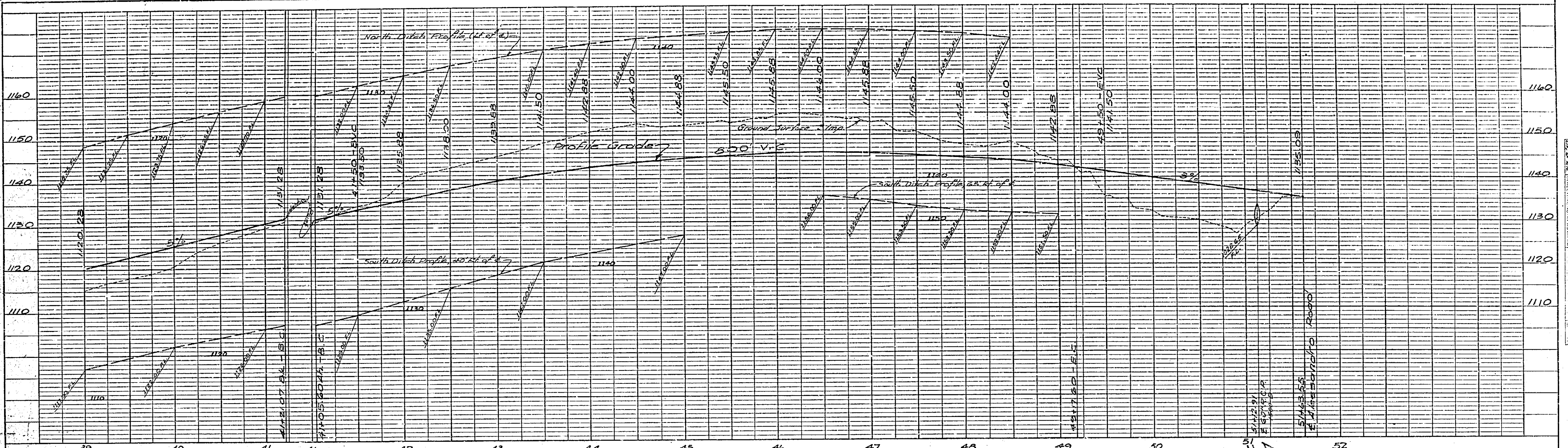
DATE 7-17-63

NO. R-522  
 SHEET 4 OF 11

DATE 3/17/61  
 DRAWN ABI  
 CHECKED WJS

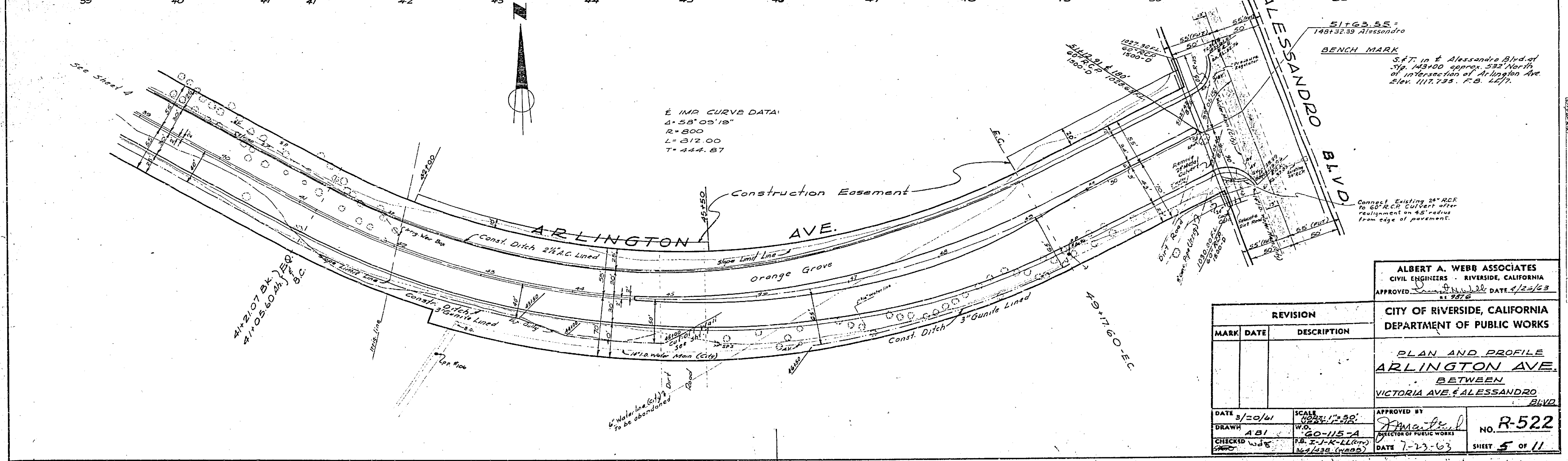
SCALE: VERT. 1"=30'  
 HORIZ. 1"=30'

W.D. 60-115-2  
 F.S. I-J-K-L-L  
 CITY OF RIVERSIDE



**PROFILE**

DATE	7-23-63
DRAWN	A.B.I.
CHECKED	F.B. J-K-LL (Lem)
APPROVED	[Signature]



**PLAN**

DATE	7-23-63
DRAWN	A.B.I.
CHECKED	F.B. J-K-LL (Lem)
APPROVED	[Signature]

**BENCH MARK**  
 51+63.55 = 148+32.39 Alessandro  
 5.47' in E Alessandro Blvd. at Sta. 143+00 approx. 532' North of intersection of Arlington Ave. Elev. 1117.735. F.B. L.E.T.

**ALBERT A. WEBB ASSOCIATES**  
 CIVIL ENGINEERS - RIVERSIDE, CALIFORNIA  
 APPROVED [Signature] DATE 7/23/63

**CITY OF RIVERSIDE, CALIFORNIA**  
 DEPARTMENT OF PUBLIC WORKS

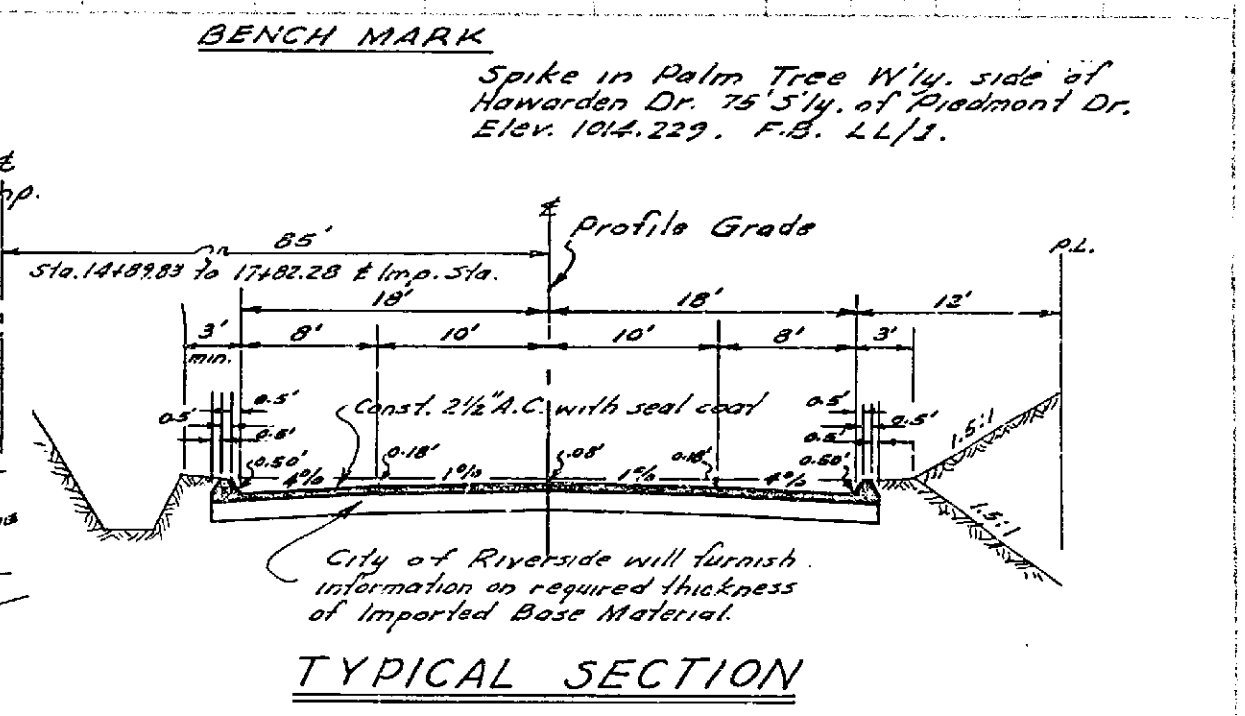
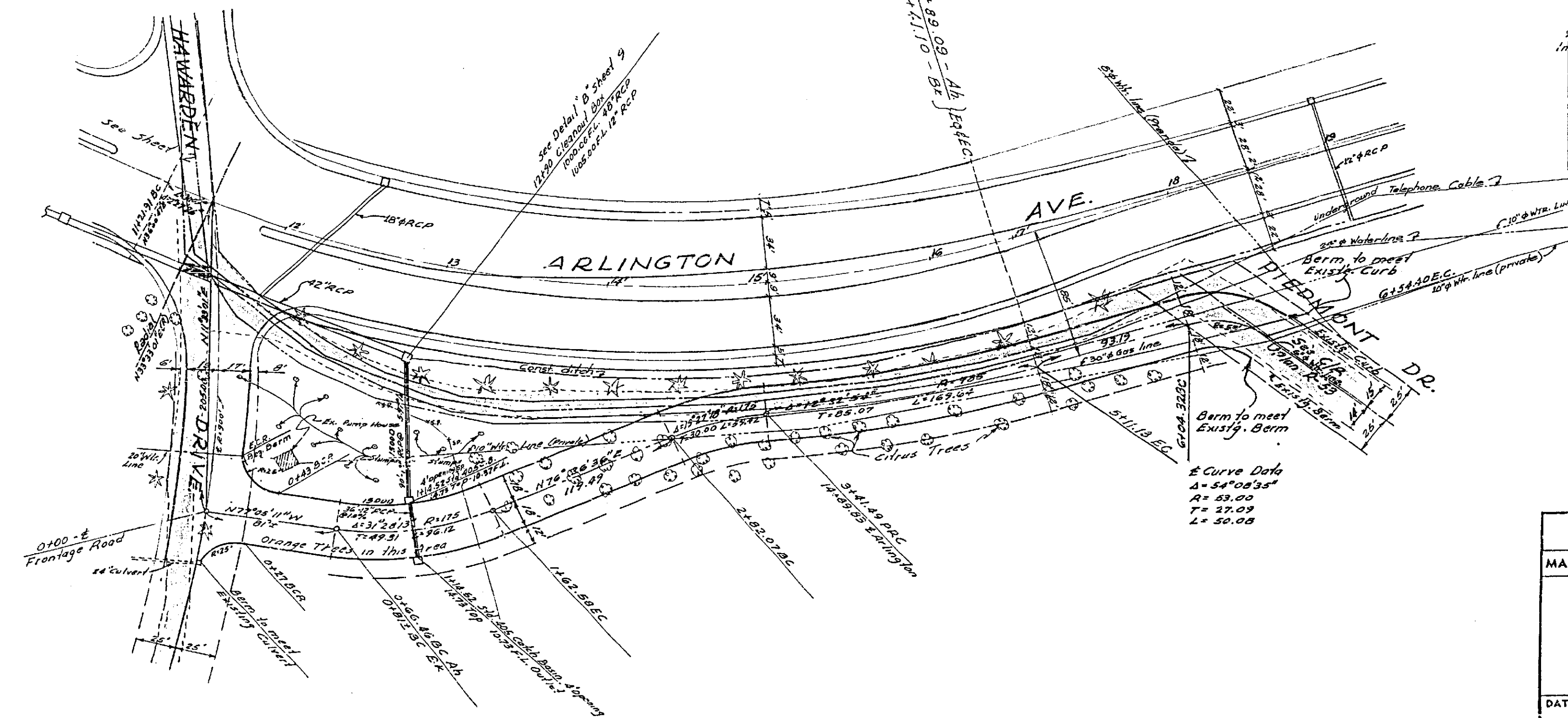
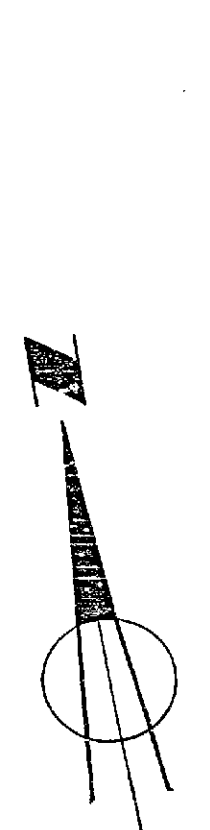
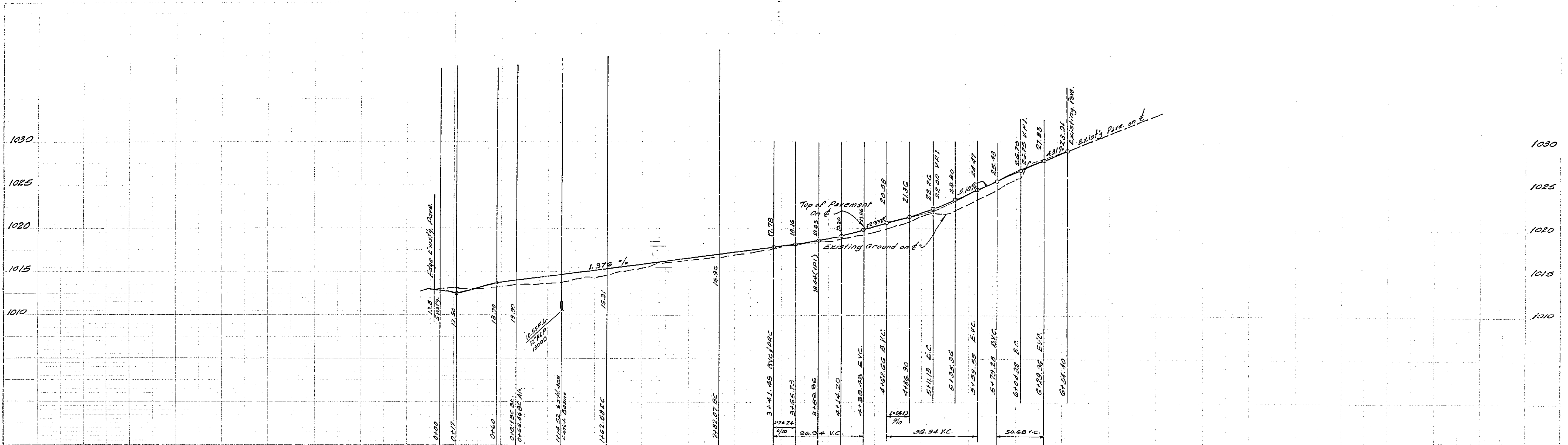
**PLAN AND PROFILE**  
**ARLINGTON AVE.**  
 BETWEEN  
 VICTORIA AVE. & ALESSANDRO BLVD.

REVISION		
MARK	DATE	DESCRIPTION

APPROVED BY [Signature]  
 DIRECTOR OF PUBLIC WORKS  
 NO. **R-522**  
 DATE 7-23-63  
 SHEET 5 OF 11

See Sheet 4

Waterline (6") to be abandoned



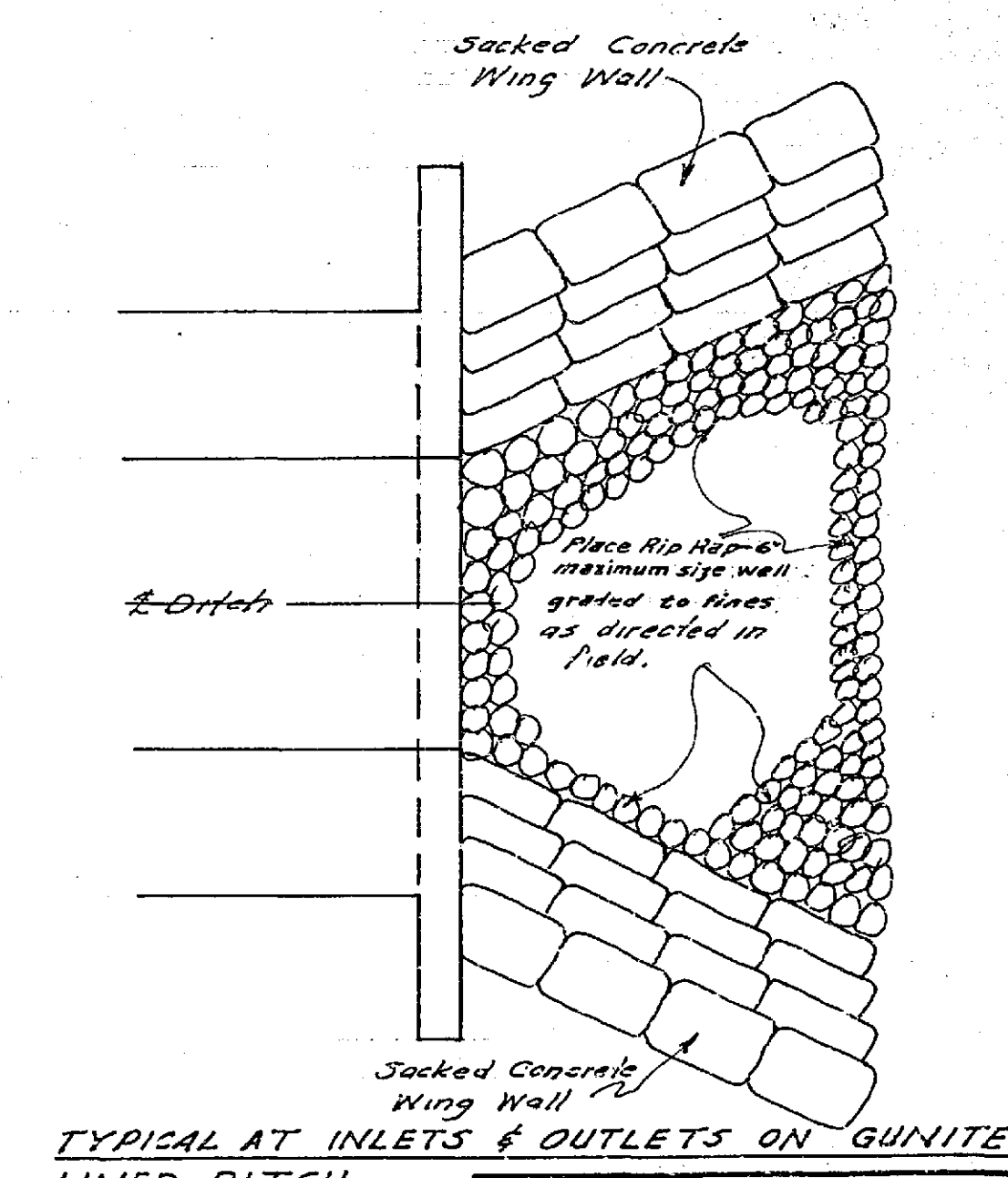
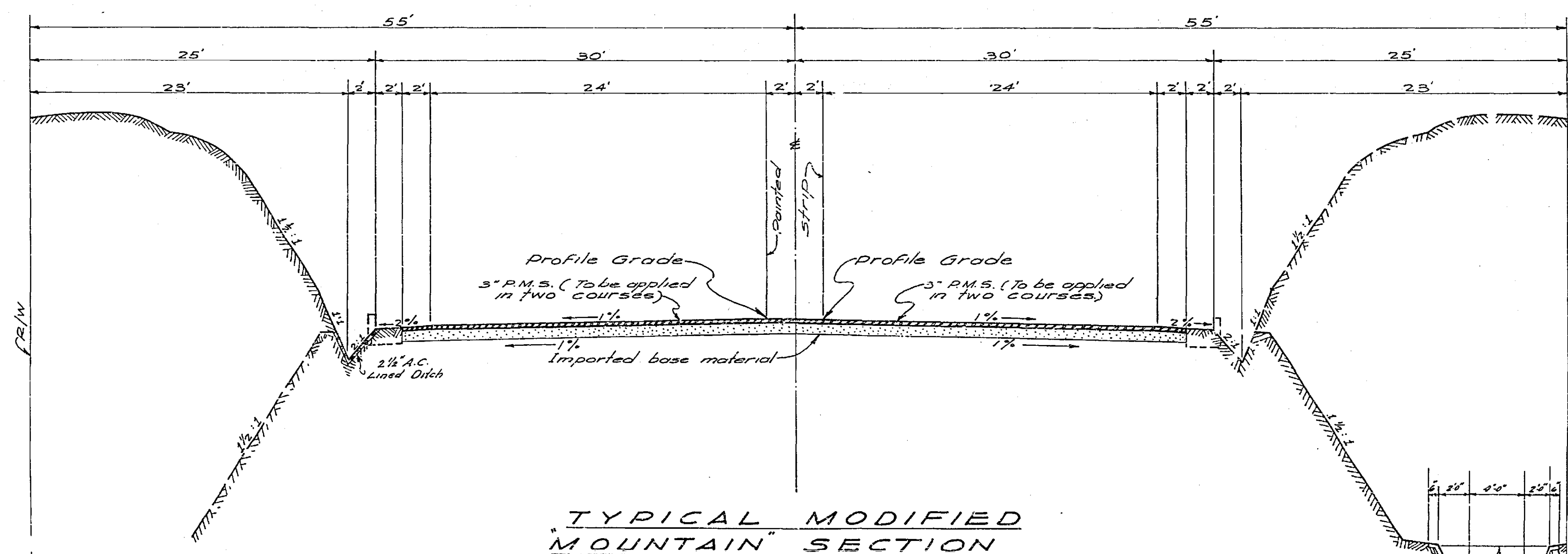
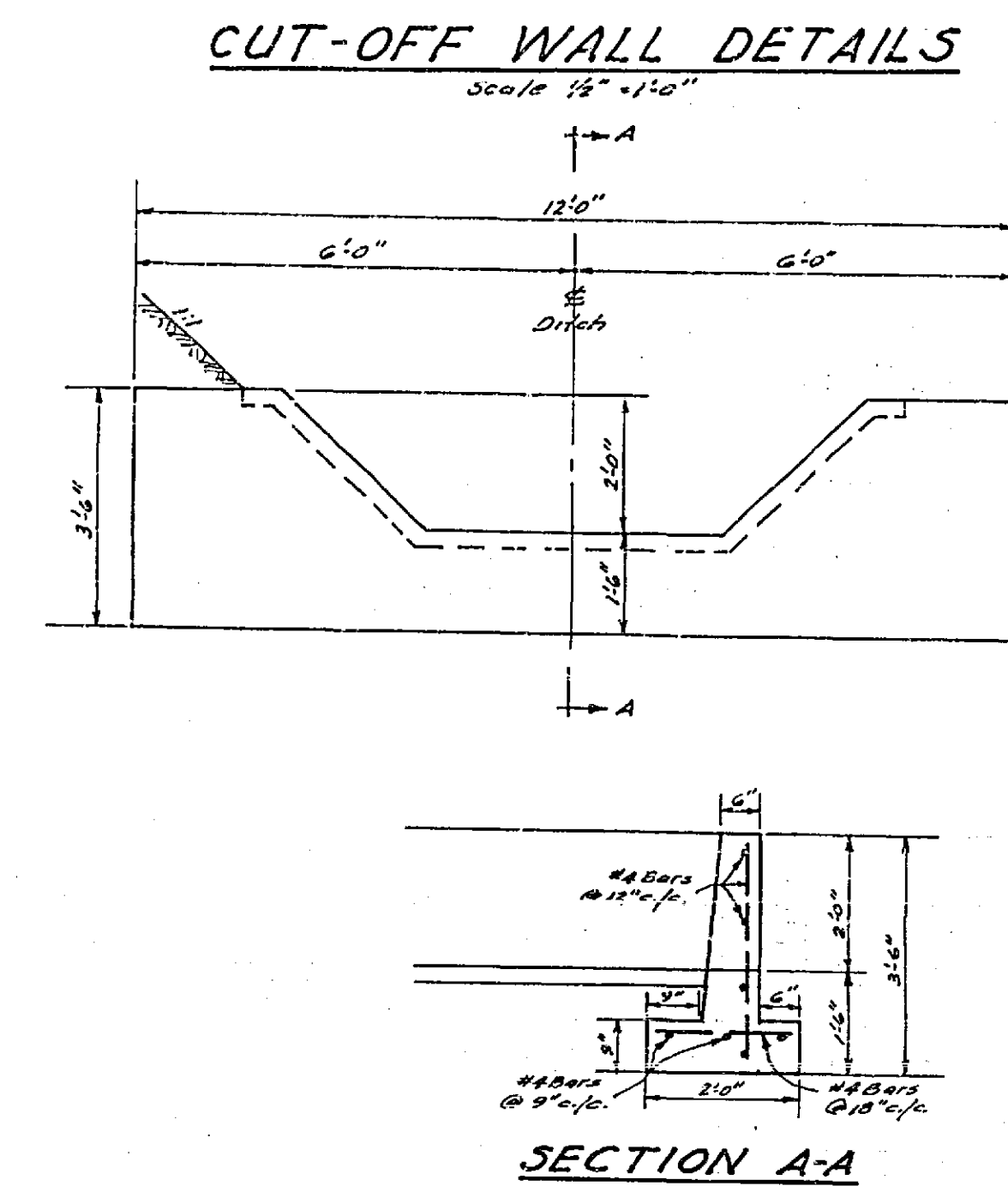
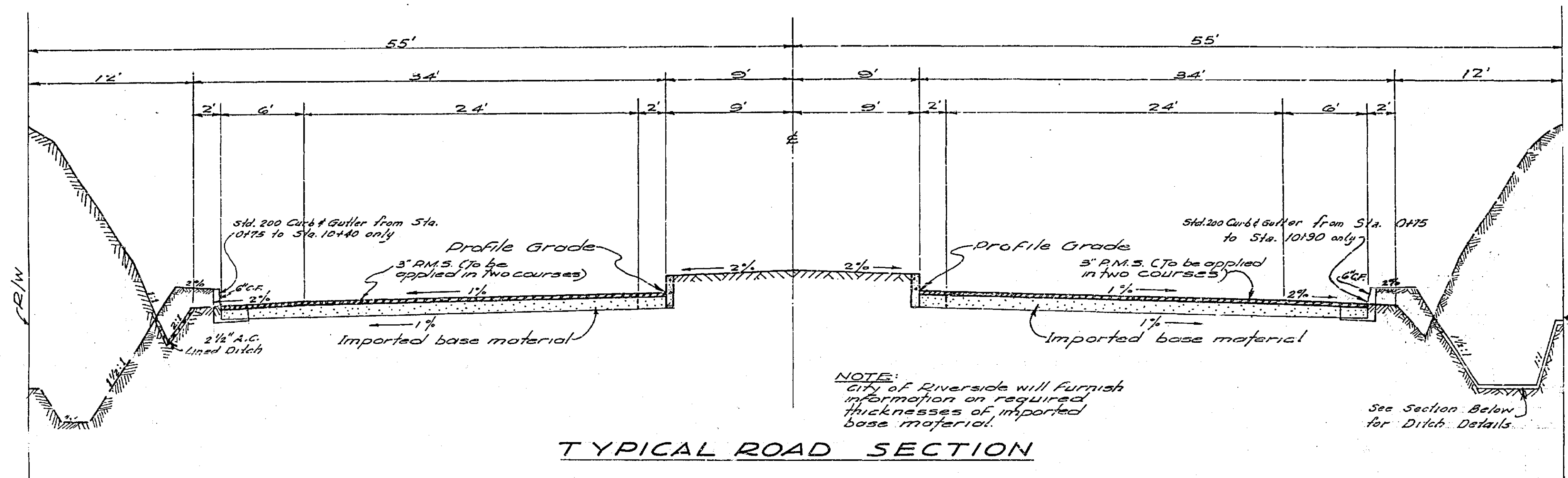
ALBERT A. WEBB ASSOCIATES  
 CIVIL ENGINEERS - RIVERSIDE, CALIFORNIA  
 APPROVED: [Signature] DATE: 4/25/63  
 11 9870

CITY OF RIVERSIDE, CALIFORNIA  
 DEPARTMENT OF PUBLIC WORKS

REVISION		
MARK	DATE	DESCRIPTION
	11/16/61	Profile Revised to 75' from width

**FRONTAGE ROAD  
 ARLINGTON AVE.  
 BETWEEN  
 HAWARDEN DRIVE & PIEDMONT DR.**

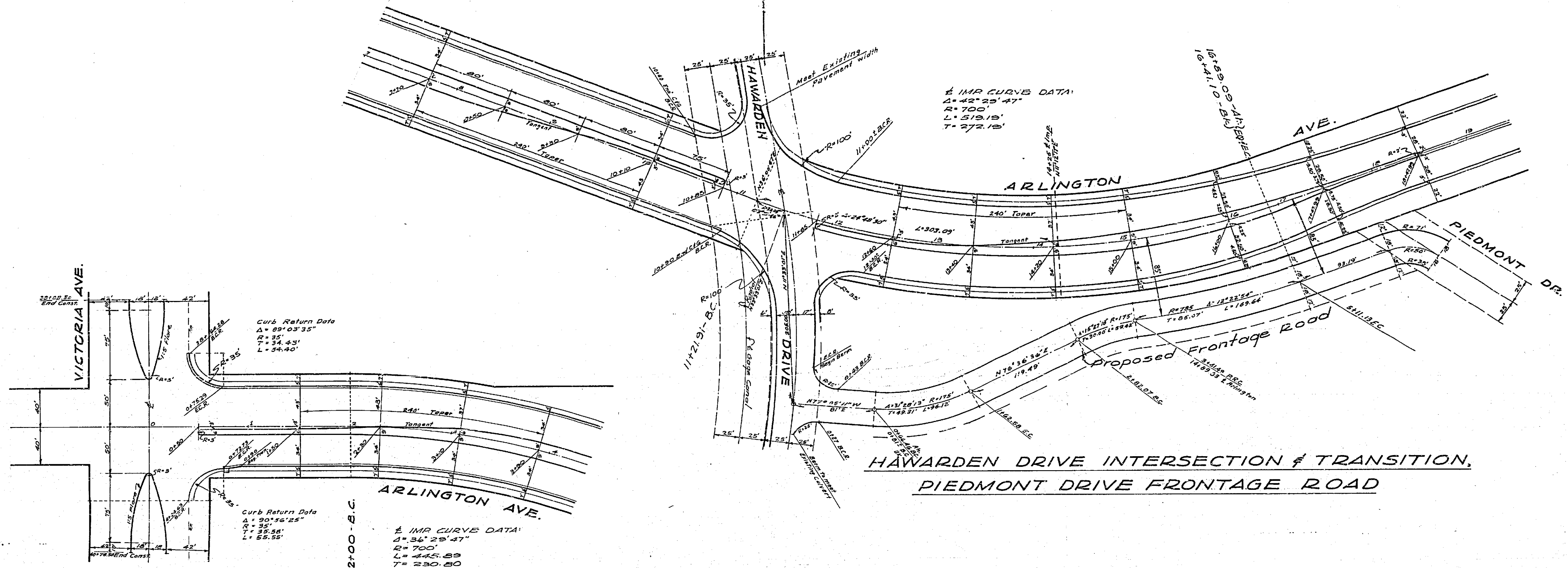
DATE: 1/16/61	SCALE: 1"=50'	APPROVED BY: [Signature]	NO. R-522
DRAWN: A.S.C.	W.D. 20-115	DIRECTOR OF PUBLIC WORKS	
CHECKED: [Signature]	F.S.	DATE: 7-23-63	SHEET 6 OF 11



4" Weep holes 30" o.c. on both sides of Ditch 6" above Flow Line & 6" of Filter Material continuous horizontally.

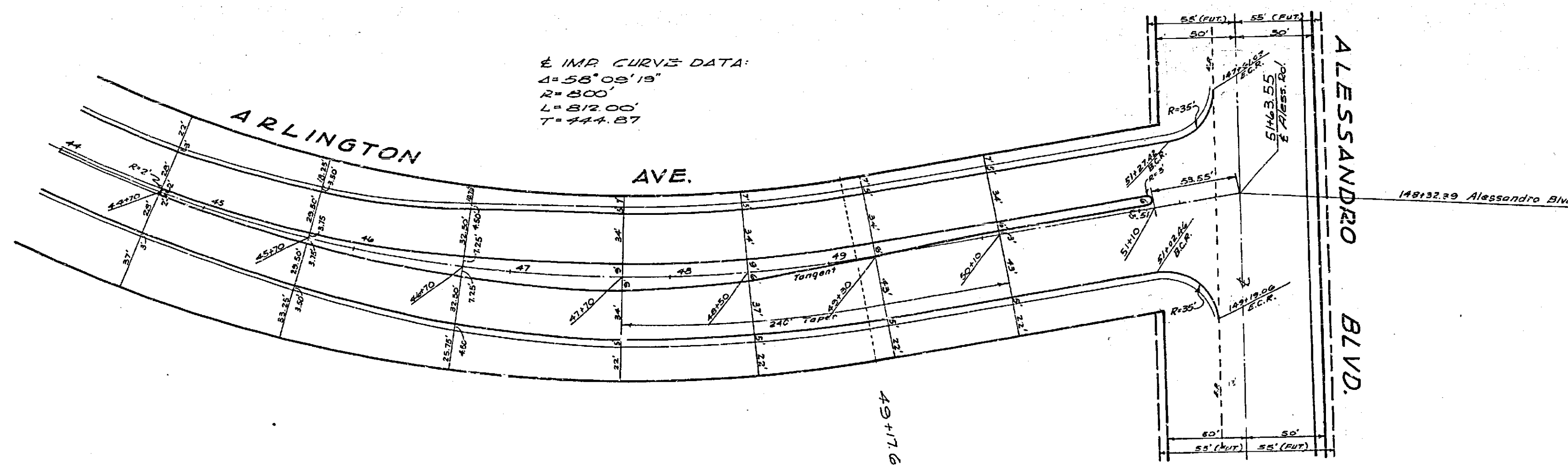
5" Air-Blown Mortar Lining with #2 x 8 ga. 5-3/8 x 10 ga. welded wire reinforcement.

REVISION		ALBERT A. WEBB ASSOCIATES CIVIL ENGINEERS - RIVERSIDE, CALIFORNIA	
MARK	DATE	DESCRIPTION	APPROVED BY [Signature] DATE 1/25/63
			CITY OF RIVERSIDE, CALIFORNIA DEPARTMENT OF PUBLIC WORKS
			<b>ROAD SECTIONS</b> <b>ARLINGTON AVE.</b> <b>BETWEEN</b> <b>VICTORIA AVE. &amp; ALESSANDRO BL.</b>
DATE	3/30/61	SCALE	1" = 5' HORIZ. 1/2" = 5' VERT.
DRAWN	[Signature]	W.D.	60-115-A
CHECKED	[Signature]	F.B.	
		APPROVED BY [Signature]	NO. <b>R-522</b>
		DATE	1-23-63
			SHEET 7 OF 11



VICTORIA AVE INTERSECTION & TRANSITION

HAWARDEN DRIVE INTERSECTION & TRANSITION, PIEDMONT DRIVE FRONTAGE ROAD

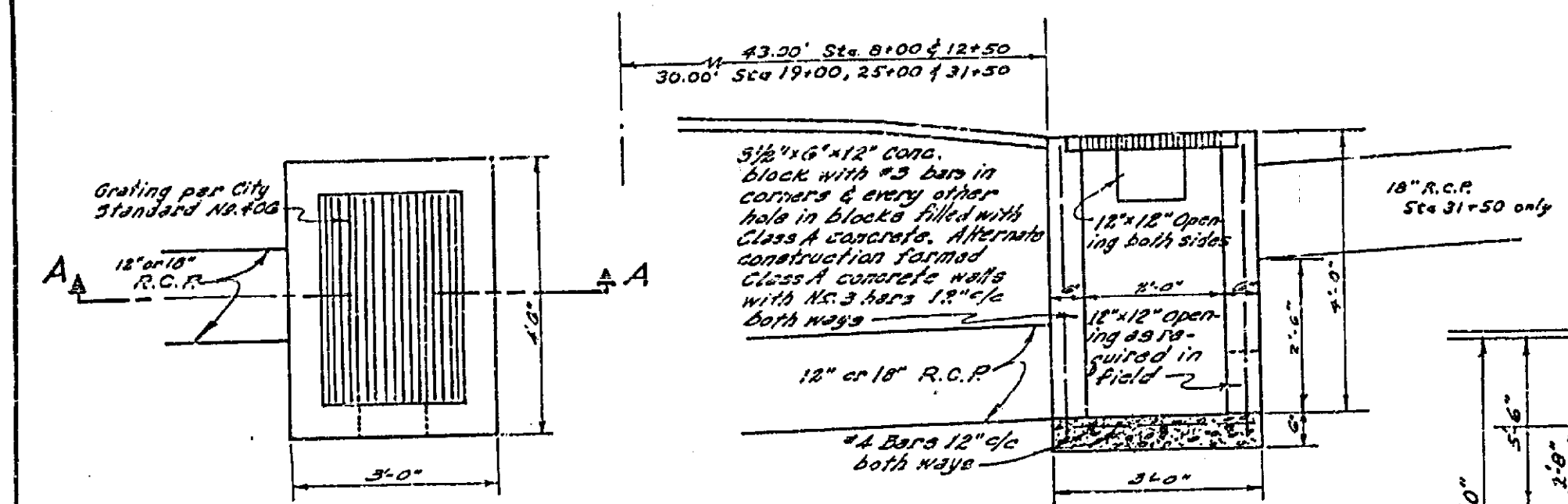


ALESSANDRO BLVD. INTERSECTION & TRANSITION

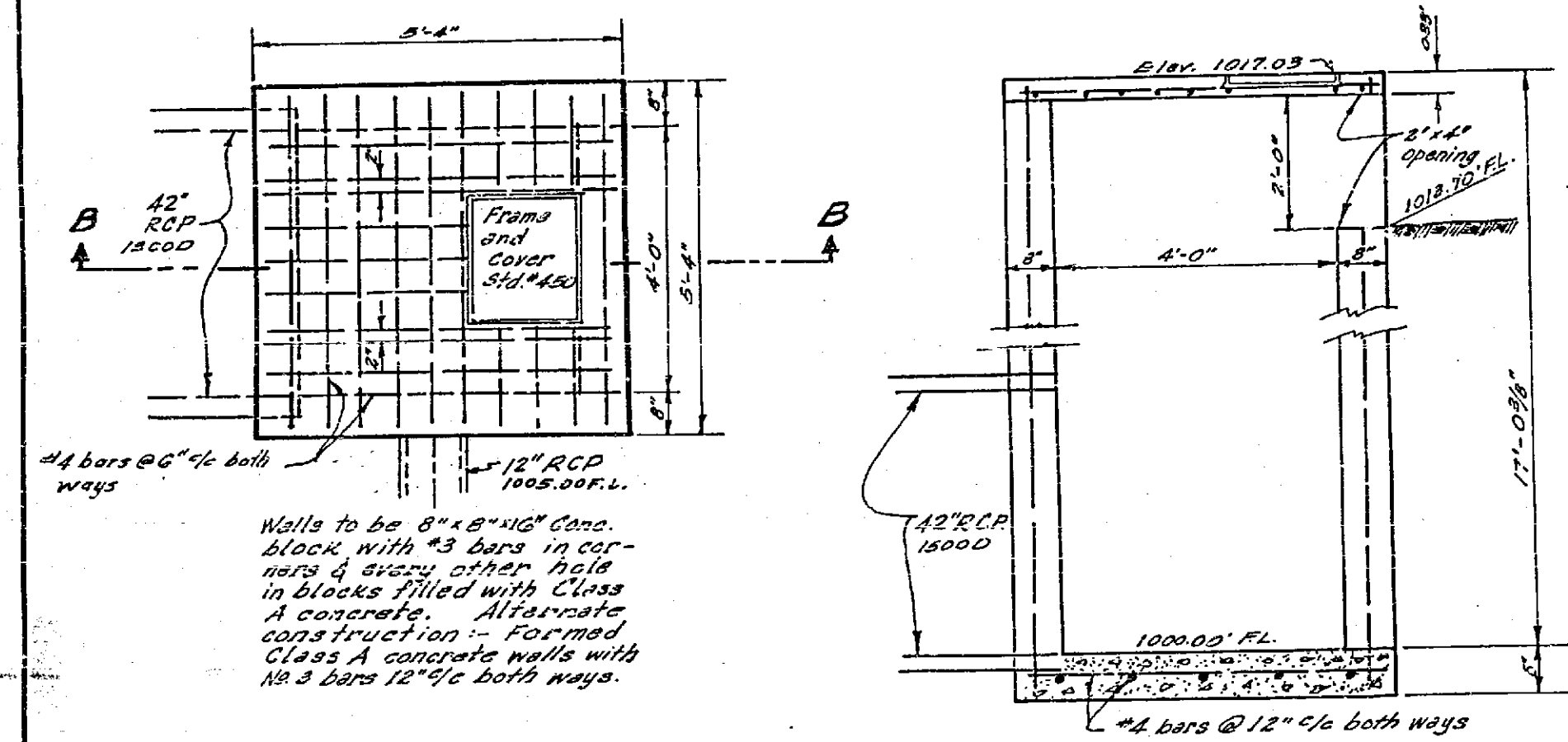
NOTE: See Sheets 1,2&5 For Topo.

ALBERT A. WEBB ASSOCIATES CIVIL ENGINEERS - RIVERSIDE, CALIFORNIA APPROVED: <i>[Signature]</i> DATE: 1/15/63 11-2876		CITY OF RIVERSIDE, CALIFORNIA DEPARTMENT OF PUBLIC WORKS
REVISION MARK DATE DESCRIPTION		TRANSITION DETAILS ARLINGTON AVE BETWEEN VICTORIA AVE & ALESSANDRO BLVD.
DATE	3/29/61	APPROVED BY
DRAWN	ABI	NO. R-522
CHECKED	W.B.	DATE 7-23-63
		SHEET 8 OF 11

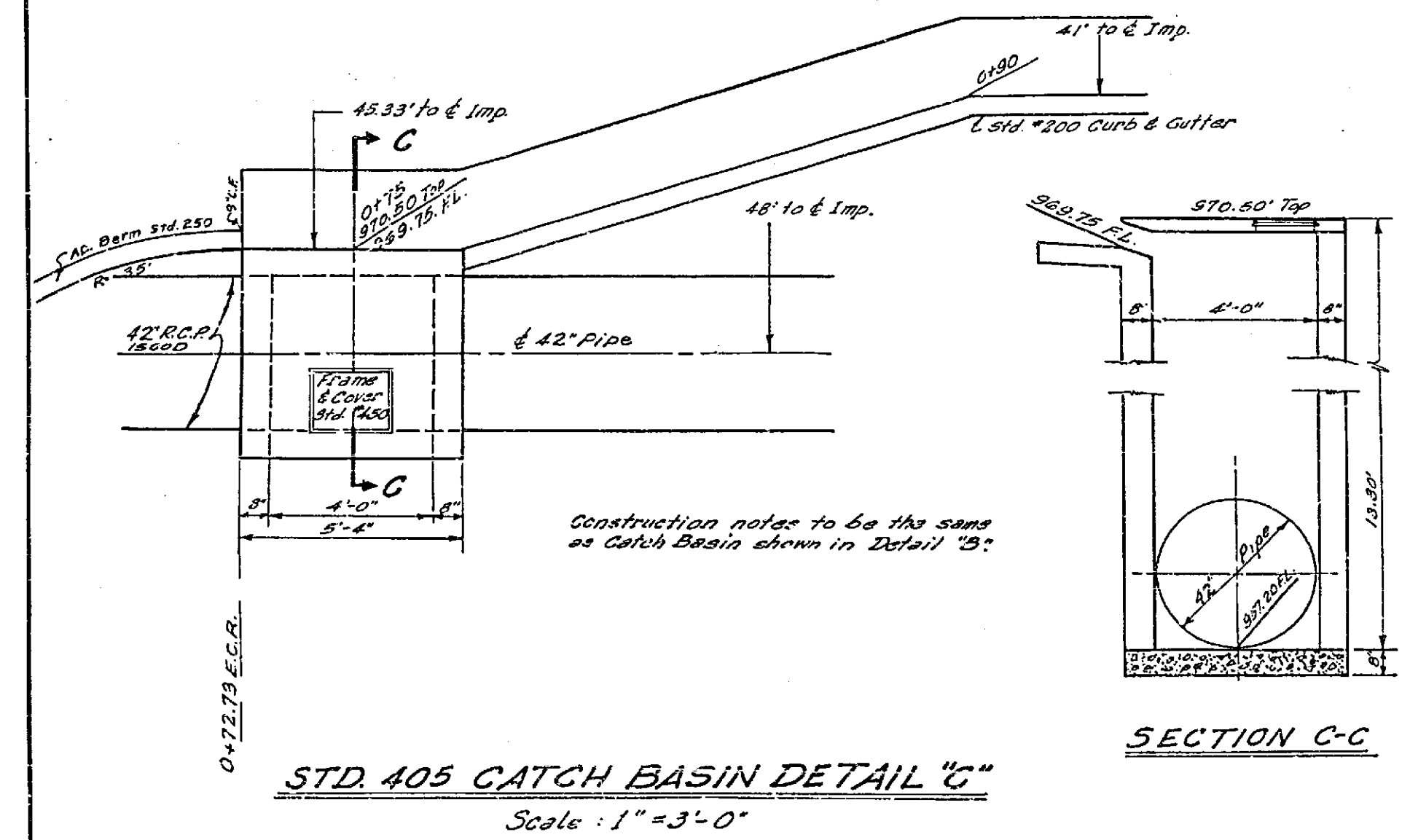
**4'0" x 8'0" BOX CULVERT FOR GAGE CANAL**



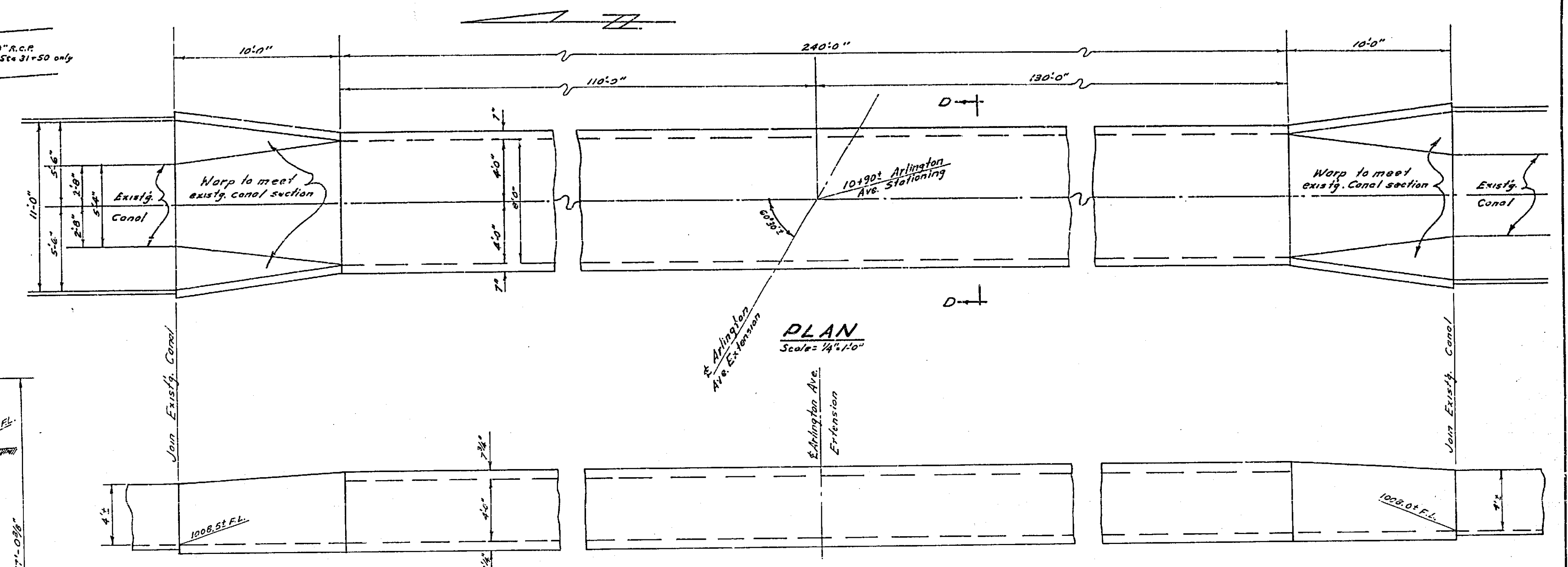
**SECTION A-A**  
**CATCH BASIN DETAIL "A"**  
Scale: 1" = 2'-0"



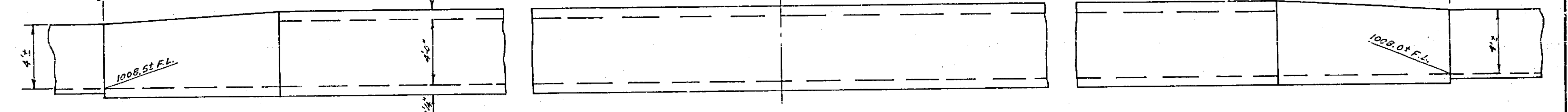
**SECTION B-B**  
**CLEANOUT BOX & CATCH BASIN DETAIL "B"**  
Scale: 1" = 2'-0"



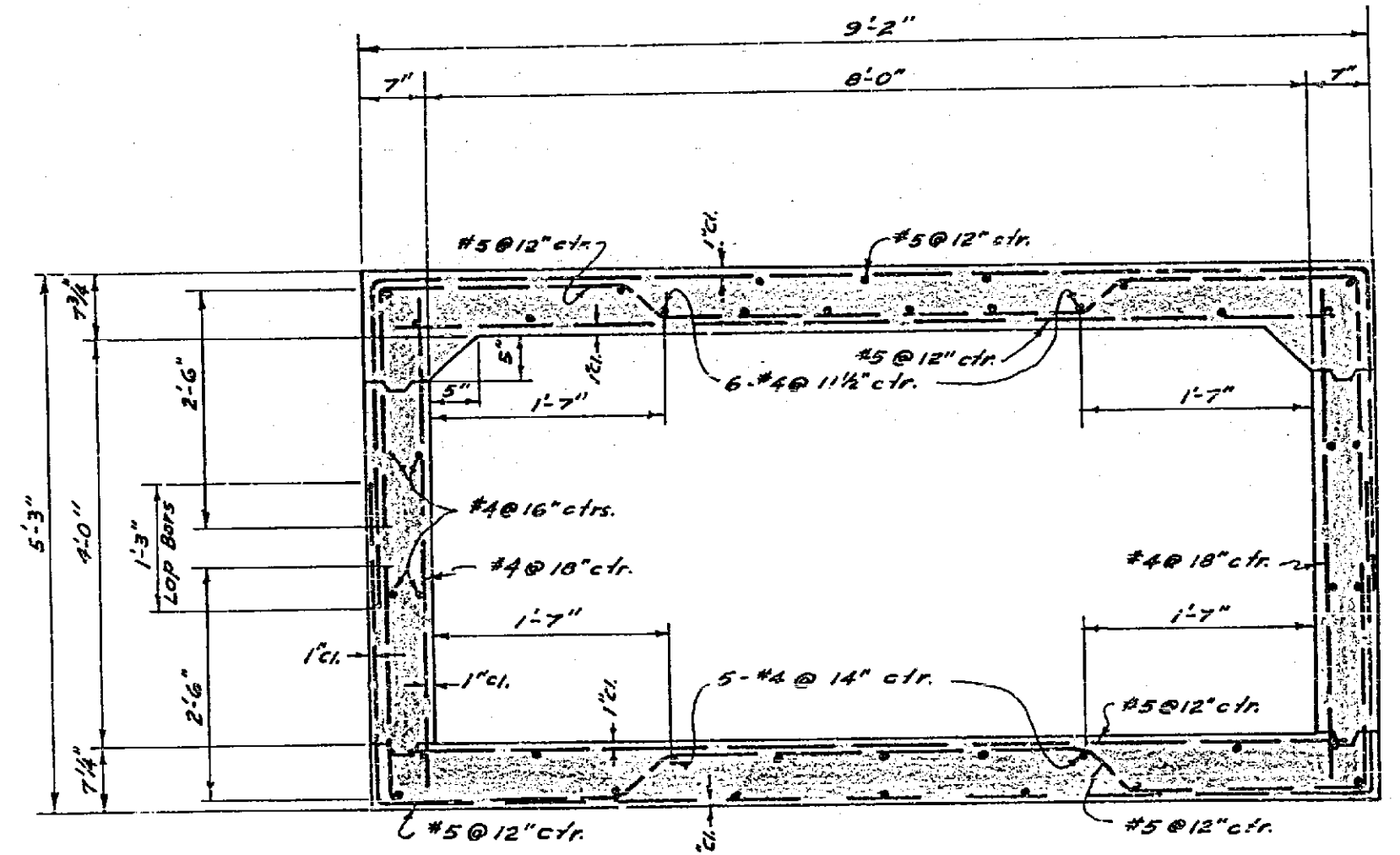
**SECTION C-C**  
**STD. 405 CATCH BASIN DETAIL "C"**  
Scale: 1" = 3'-0"



**PLAN**  
Scale: 1/4" = 1'-0"



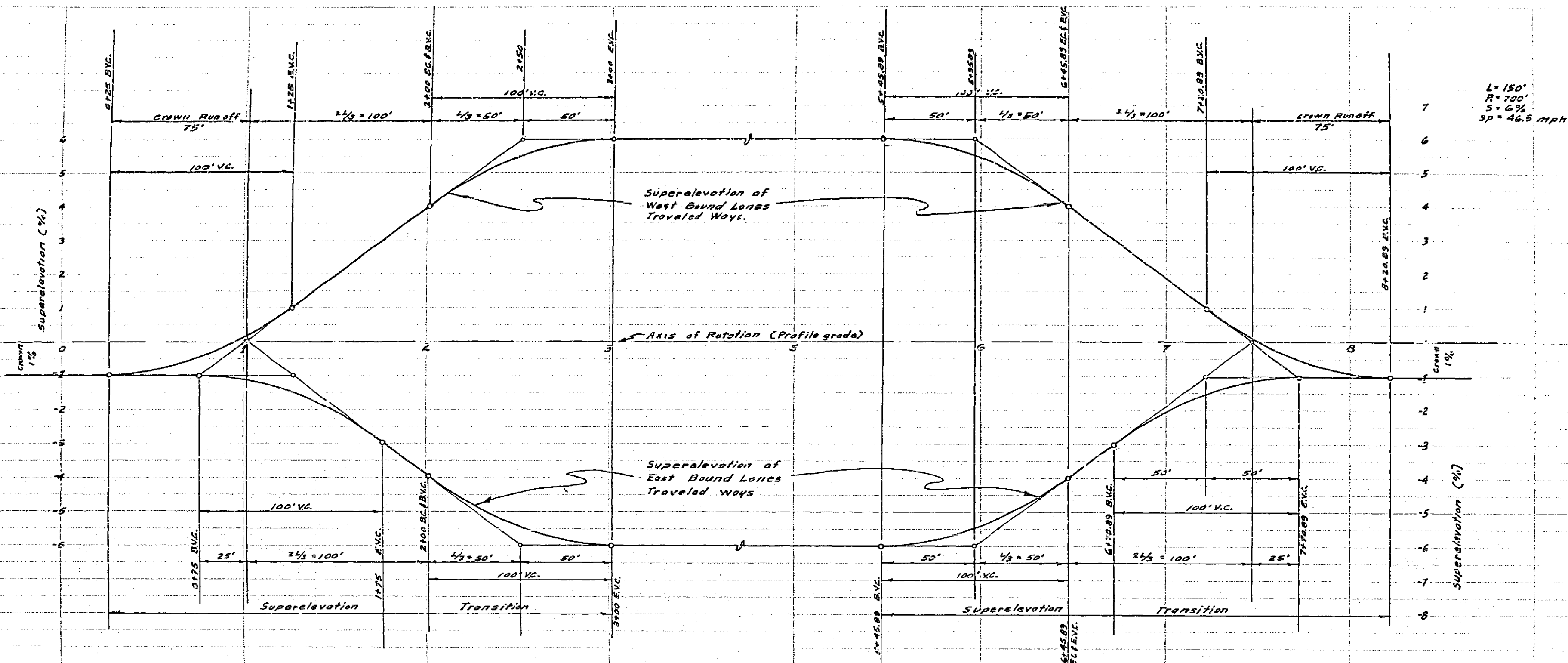
**ELEVATION**  
Scale: 1/4" = 1'-0"



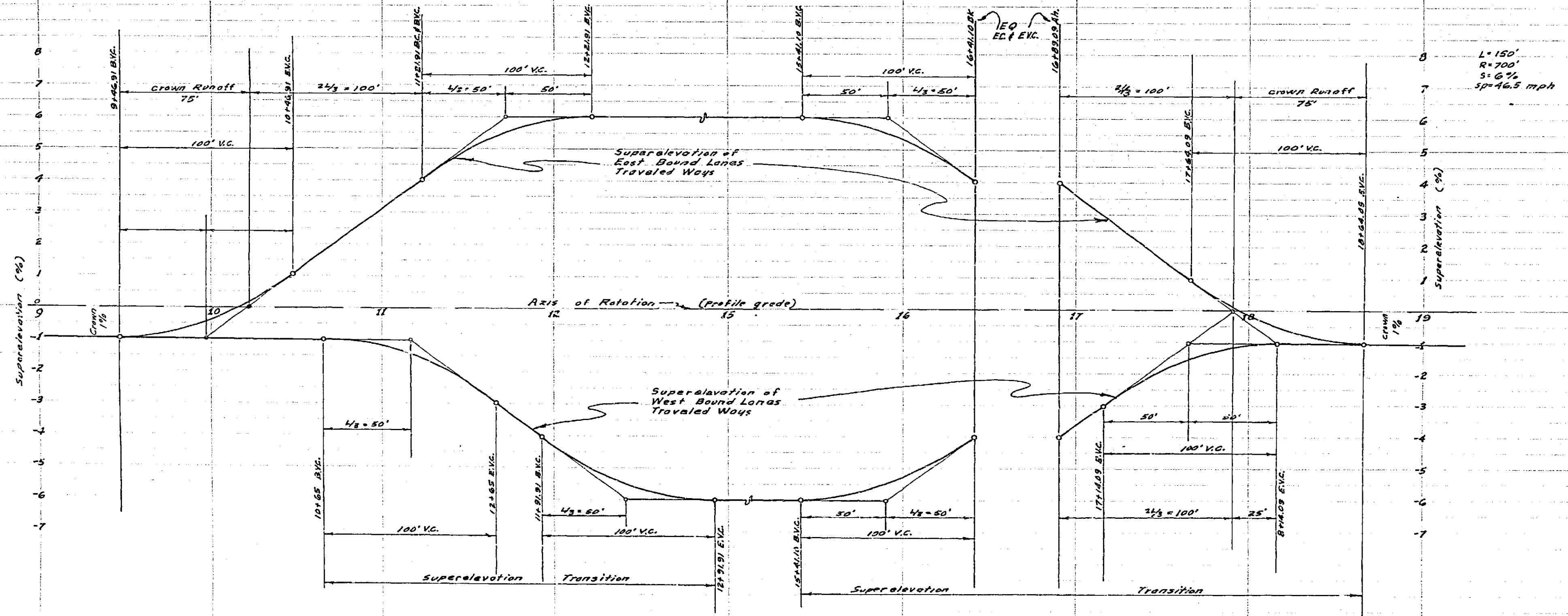
**SECTION D-D**  
Scale: 3/4" = 1'-0"

Gage Canal		ALBERT A. WEBB ASSOCIATES CIVIL ENGINEERS - RIVERSIDE, CALIFORNIA APPROVED: <i>[Signature]</i> DATE: 1/25/63 #13876	
REVISION		CITY OF RIVERSIDE, CALIFORNIA DEPARTMENT OF PUBLIC WORKS	
MARK	DATE	DESCRIPTION	
		DETAILS OF STRUCTURES ARLINGTON AVE. BETWEEN VICTORIA AVE. & ALESSANDRO BLVD.	
DATE	1/15/68	SCALE	As Noted
DRAWN	N.C.C./B.E.L.	W.O.	60-115
CHECKED	wdg	P.S. City of Riverside	1, 5, 10, & 44
		APPROVED BY	<i>[Signature]</i>
		DATE	7-23-63
		NO.	R-522
		SHEET	9 of 11





L = 150'  
 R = 700'  
 S = 6%  
 SP = 46.5 mph



L = 150'  
 R = 700'  
 S = 6%  
 SP = 46.5 mph

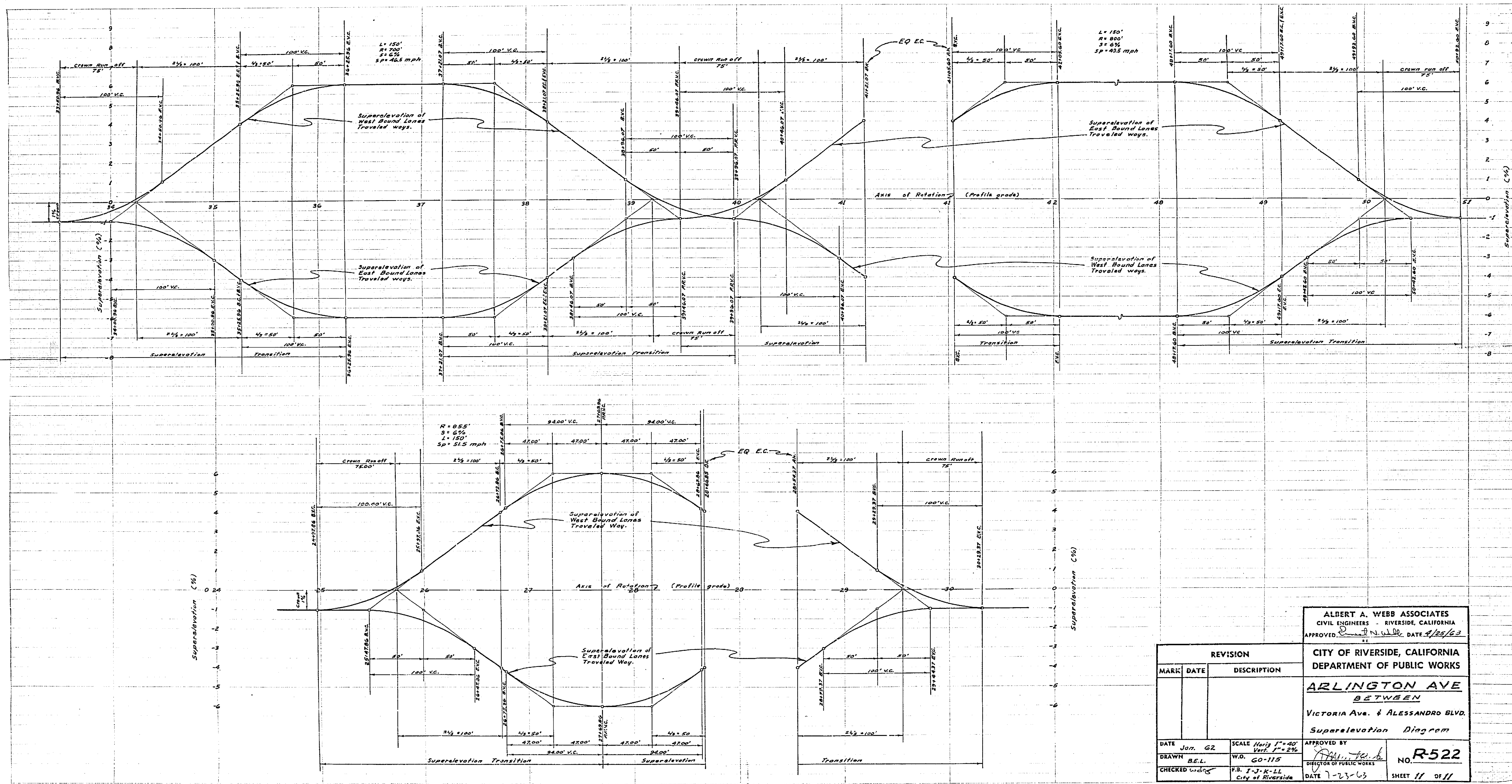
REVISION		
MARK	DATE	DESCRIPTION

ALBERT A. WEBB ASSOCIATES  
 CIVIL ENGINEERS - RIVERSIDE, CALIFORNIA  
 APPROVED *[Signature]* DATE 4/25/63

CITY OF RIVERSIDE, CALIFORNIA  
 DEPARTMENT OF PUBLIC WORKS

**ARLINGTON AVE.**  
 BETWEEN  
 VICTORIA AVE. & ALESSANDRO BLVD.  
 Superelevation Diagram

DATE Jan. 62 SCALE Horiz. 1" = 40'  
 DRAWN B.E.L. W.O. 60-115 Vert. 1" = 2%  
 CHECKED *[Signature]* F.B. 3-1-K-LL City of Riverside APPROVED BY *[Signature]* DIRECTOR OF PUBLIC WORKS NO. R-522  
 DATE 7-23-63 SHEET 10 OF 11



<b>ALBERT A. WEBB ASSOCIATES</b> CIVIL ENGINEERS - RIVERSIDE, CALIFORNIA APPROVED <i>Albert A. Webb</i> DATE 4/25/63	
<b>CITY OF RIVERSIDE, CALIFORNIA</b> DEPARTMENT OF PUBLIC WORKS <b>ARLINGTON AVE</b> BETWEEN VICTORIA AVE. & ALESSANDRO BLVD. Superelevation Diagram	
DATE Jan. 62 DRAWN B.E.L. CHECKED <i>W.D.</i>	SCALE Horiz 1"=40' Vert 1"=2%' W.D. 60-115 P.B. T-J-K-LL City of Riverside
APPROVED BY <i>Albert A. Webb</i> DIRECTOR OF PUBLIC WORKS DATE 7-23-63	NO. <b>R-522</b> SHEET 11 OF 11