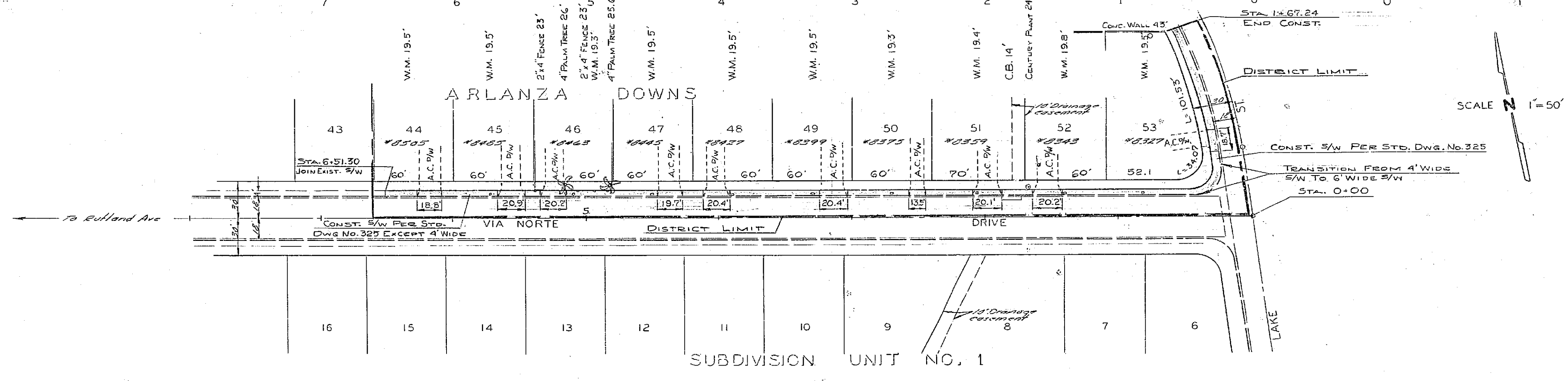


PROFILE	DATE
NO. 1	6-12-63
NO. 2	
NO. 3	
NO. 4	
NO. 5	
NO. 6	
NO. 7	
NO. 8	
NO. 9	
NO. 10	
NO. 11	
NO. 12	
NO. 13	
NO. 14	
NO. 15	
NO. 16	
NO. 17	
NO. 18	
NO. 19	
NO. 20	
NO. 21	
NO. 22	
NO. 23	
NO. 24	
NO. 25	
NO. 26	
NO. 27	
NO. 28	
NO. 29	
NO. 30	
NO. 31	
NO. 32	
NO. 33	
NO. 34	
NO. 35	
NO. 36	
NO. 37	
NO. 38	
NO. 39	
NO. 40	
NO. 41	
NO. 42	
NO. 43	
NO. 44	
NO. 45	
NO. 46	
NO. 47	
NO. 48	
NO. 49	
NO. 50	
NO. 51	
NO. 52	
NO. 53	
NO. 54	
NO. 55	
NO. 56	
NO. 57	
NO. 58	
NO. 59	
NO. 60	
NO. 61	
NO. 62	
NO. 63	
NO. 64	
NO. 65	
NO. 66	
NO. 67	
NO. 68	
NO. 69	
NO. 70	
NO. 71	
NO. 72	
NO. 73	
NO. 74	
NO. 75	
NO. 76	
NO. 77	
NO. 78	
NO. 79	
NO. 80	
NO. 81	
NO. 82	
NO. 83	
NO. 84	
NO. 85	
NO. 86	
NO. 87	
NO. 88	
NO. 89	
NO. 90	
NO. 91	
NO. 92	
NO. 93	
NO. 94	
NO. 95	
NO. 96	
NO. 97	
NO. 98	
NO. 99	
NO. 100	

B.M. 735.88 ON PK NAIL IN S.W. COR. LAKE & VIA NORTE
F.B. R-2 26-31
Horiz: 1"=50'
Scale Vert: 1"=5'

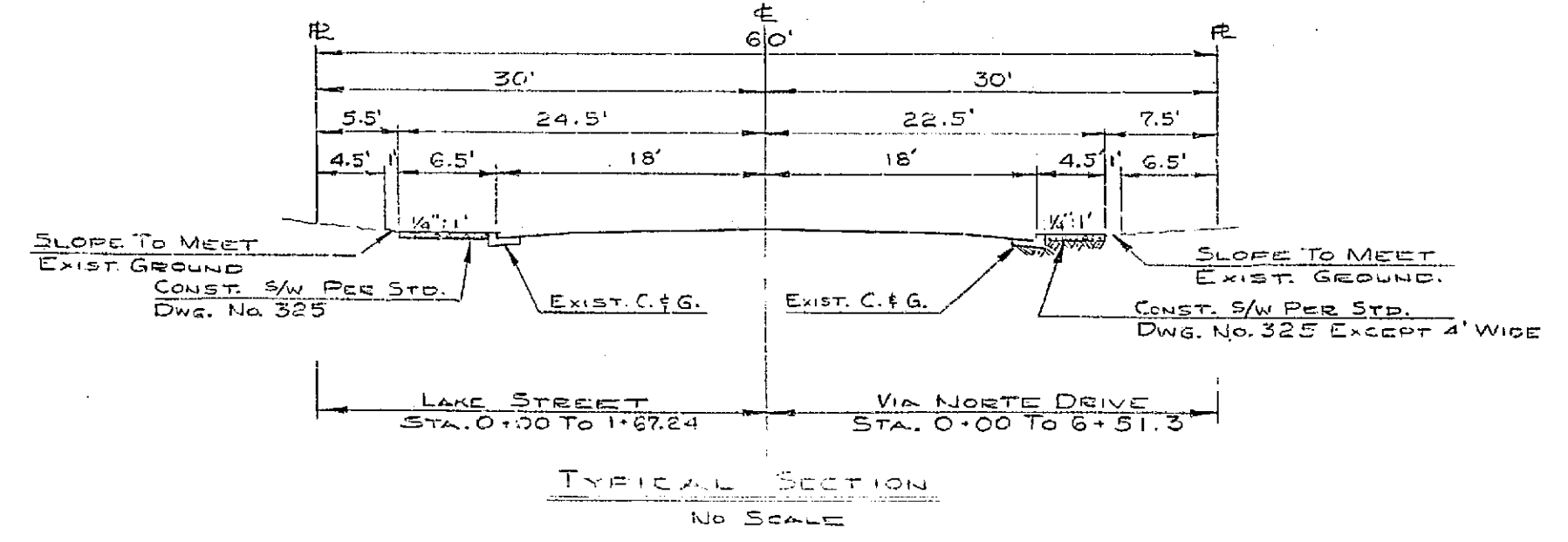


- NOTES:
1. SIDEWALKS TO BE 4' WIDE ON VIA NORTE; 6' WIDE ON LAKE.
 2. OVERLAY EXIST. A.C. P/W'S OR REMOVE EXIST. A.C. IN P/W'S AND CONST. 2 1/2" A.C. TO PRODUCE A SMOOTH DRIVE.
 3. P/W APPROACHES PER STD. DWG. NO. 325, EXCEPT DIMENSION "B" SHALL CONFORM TO EXISTING CURBS, DEPRESSIONS AND DIMENSION "A" SHALL CONFORM TO EXISTING A.C. DRIVEWAYS. "B" DIMENSIONS ARE NOTED ON THE PLAN FOR ESTIMATING PURPOSES.

QUANTITY ESTIMATE
CONCRETE SIDEWALK ----- 2367 S.F.
CONCRETE DRIVEWAY APPROACH ----- 809 S.F.
A.C. OVERLAY AND/OR REPLACEMENT ----- L.S.

LEGEND
[Symbol] CONST. S/W & P/W APPROACHES

PLAN	DATE
NO. 1	6-12-63
NO. 2	
NO. 3	
NO. 4	
NO. 5	
NO. 6	
NO. 7	
NO. 8	
NO. 9	
NO. 10	
NO. 11	
NO. 12	
NO. 13	
NO. 14	
NO. 15	
NO. 16	
NO. 17	
NO. 18	
NO. 19	
NO. 20	
NO. 21	
NO. 22	
NO. 23	
NO. 24	
NO. 25	
NO. 26	
NO. 27	
NO. 28	
NO. 29	
NO. 30	
NO. 31	
NO. 32	
NO. 33	
NO. 34	
NO. 35	
NO. 36	
NO. 37	
NO. 38	
NO. 39	
NO. 40	
NO. 41	
NO. 42	
NO. 43	
NO. 44	
NO. 45	
NO. 46	
NO. 47	
NO. 48	
NO. 49	
NO. 50	
NO. 51	
NO. 52	
NO. 53	
NO. 54	
NO. 55	
NO. 56	
NO. 57	
NO. 58	
NO. 59	
NO. 60	
NO. 61	
NO. 62	
NO. 63	
NO. 64	
NO. 65	
NO. 66	
NO. 67	
NO. 68	
NO. 69	
NO. 70	
NO. 71	
NO. 72	
NO. 73	
NO. 74	
NO. 75	
NO. 76	
NO. 77	
NO. 78	
NO. 79	
NO. 80	
NO. 81	
NO. 82	
NO. 83	
NO. 84	
NO. 85	
NO. 86	
NO. 87	
NO. 88	
NO. 89	
NO. 90	
NO. 91	
NO. 92	
NO. 93	
NO. 94	
NO. 95	
NO. 96	
NO. 97	
NO. 98	
NO. 99	
NO. 100	



REVISIONS		CITY OF RIVERSIDE, CALIFORNIA DEPARTMENT OF PUBLIC WORKS
MARK	DATE	
		VIA NORTE DRIVE SIDEWALK IMPROVEMENT DISTRICT LAKE STREET TO 650' WEST
DESIGNED BY	SUBMITTED BY	APPROVED BY
DRAWN BY	PARK DEPT.	TRAFFIC DIV.
CHECKED BY	RECOMMENDED BY	DATE
		6-12-63
		PROJ. NO. 6041
		R-687
		SHEET 1 OF 1