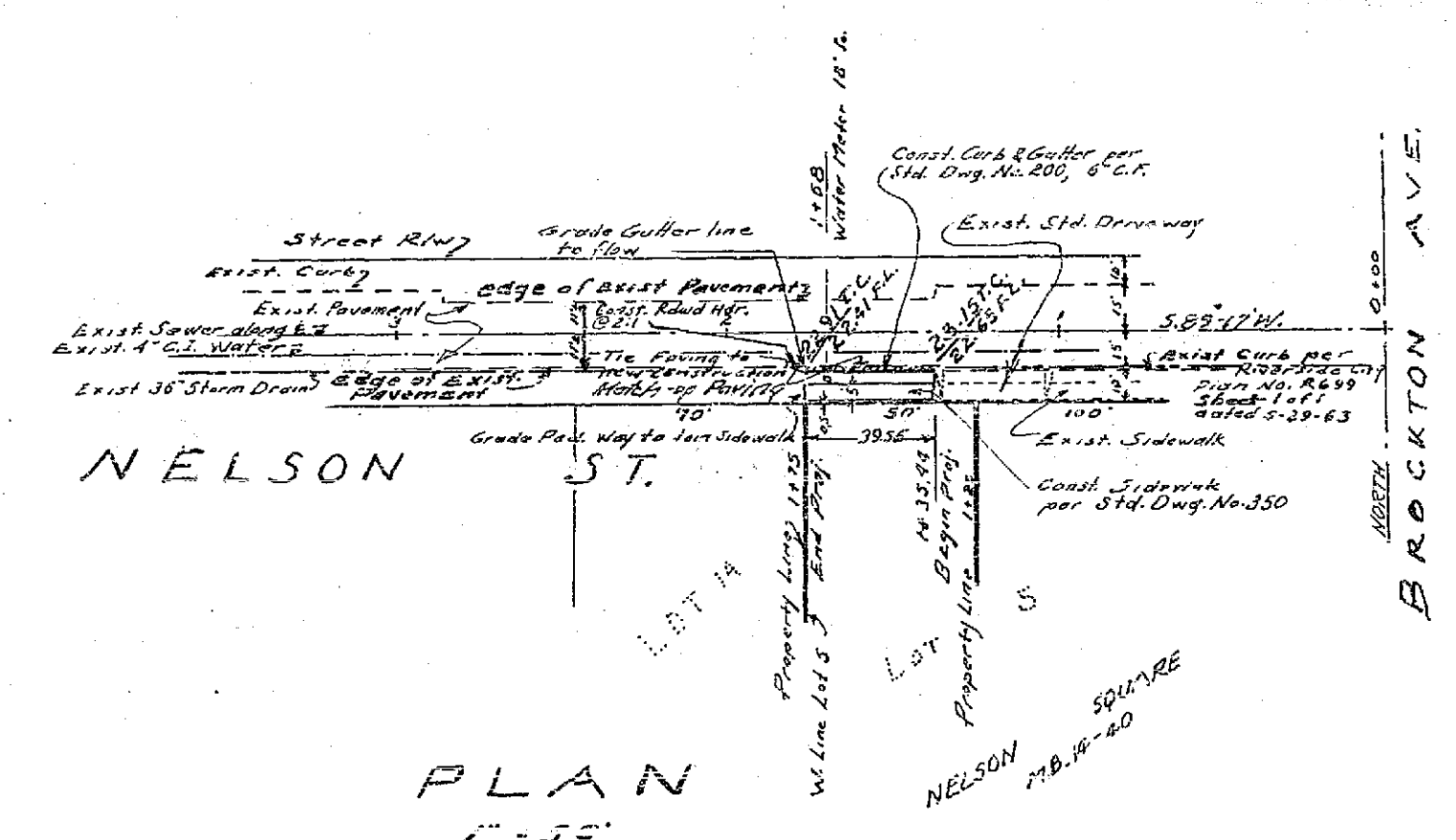
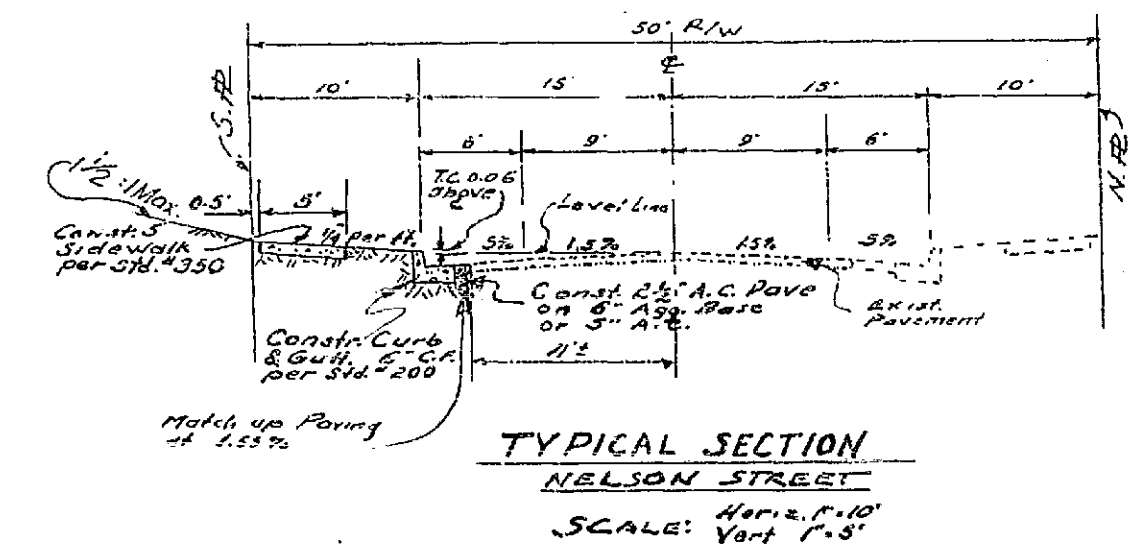


BENCH MARK: 820.85
 1.00 CURB ABOVE CATCH BASIN
 at Magnolia & School Circle



- GENERAL NOTES -
1. IT SHALL BE THE RESPONSIBILITY OF THE CONTRACTOR TO CLEAR THE RIGHTS-OF-WAY IN ACCORDANCE WITH THE PROVISIONS OF LAW AS IT AFFECTS EACH UTILITY INCLUDING IRRIGATION LINES AND ADJACIENCES AND AT NO COST TO THE CITY.
 2. CONSTRUCTION SHALL BE IN ACCORDANCE WITH THE CITY OF RIVERSIDE DEPARTMENT OF PUBLIC WORKS, SPECIFICATION NO. 41 AND STANDARD DRAWINGS.
 3. PRIME COAT, SEAL COAT, AND PAINT BINDER ARE REQUIRED.
 4. GRADING WILL REQUIRE A PERMIT UNDER ORDINANCE 3093 FOR A CUT OR FILL EXCEEDING 100 CUBIC YARDS, OR A FILL OVER ONE FOOT IN DEPTH.
 5. PAVE EDGE OF EXISTING PAVEMENT WHERE NEW PAVING JOINS EXISTING PAVEMENT TO A CLEAN, STRAIGHT LINE. CONSTRUCT MATCH-UP PAVING AS SHOWN AND OVERLAY PAVING AS DIRECTED IN THE FIELD TO PRODUCE A SMOOTH CROWN 3/8\"/>



J. F. DAVIDSON ASSOCIATES CIVIL ENGINEERS - SURVEYORS - PLANNERS RIVERSIDE, CALIFORNIA		CITY OF RIVERSIDE, CALIFORNIA DEPARTMENT OF PUBLIC WORKS		PROJECT NO. R-699-A
APPROVED BY: <i>J. F. Davidson</i> R.E. No. 862	DATE: 4-14-69	APPROVED BY: <i>[Signature]</i> DIRECTOR OF PUBLIC WORKS	DATE: 5-26-69	SHEET 1 OF 1
W.O. 12261 FOR: <i>DOV 862</i> P.B. 805		DESIGNED BY: <i>[Signature]</i> DRAWN BY: <i>[Signature]</i> CHECKED BY: <i>[Signature]</i>		HORIZ. SCALE: 1" = 50' VERT. SCALE: 1" = 5' FILE NO. 2746