

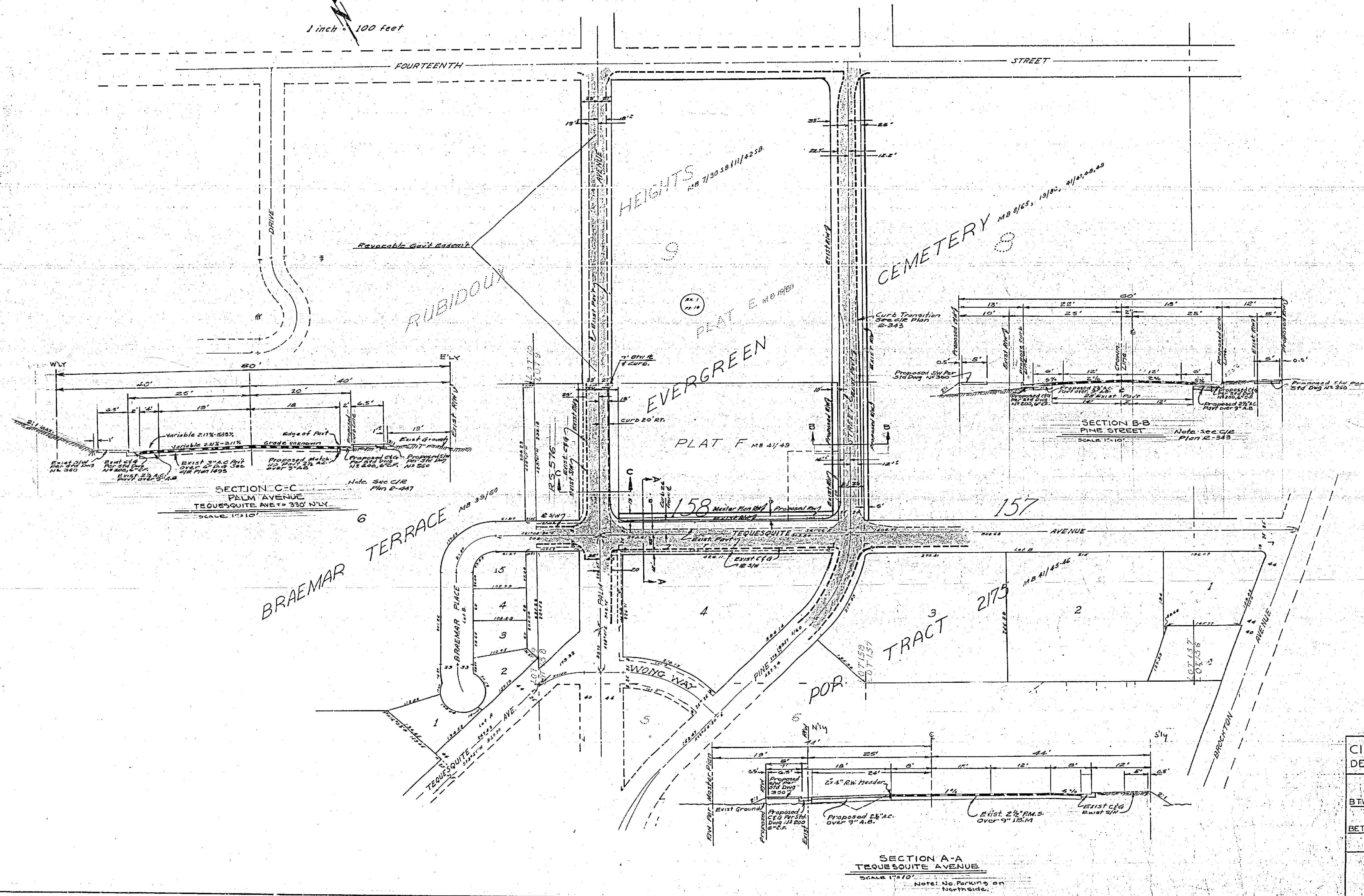
2-14

S. C. C. A.

Riverside City

2-14

1 inch = 100 feet



CITY OF RIVERSIDE, CALIFORNIA
 DEPARTMENT OF PUBLIC WORKS

PROPOSED IMPROVEMENTS TO
 PALM AVENUE AND PINE STREET
 BETWEEN TEQUESQUITE AVE. AND 14TH STREET
 AND
 TEQUESQUITE AVENUE
 BETWEEN PALM AVENUE AND PINE STREET

R-760