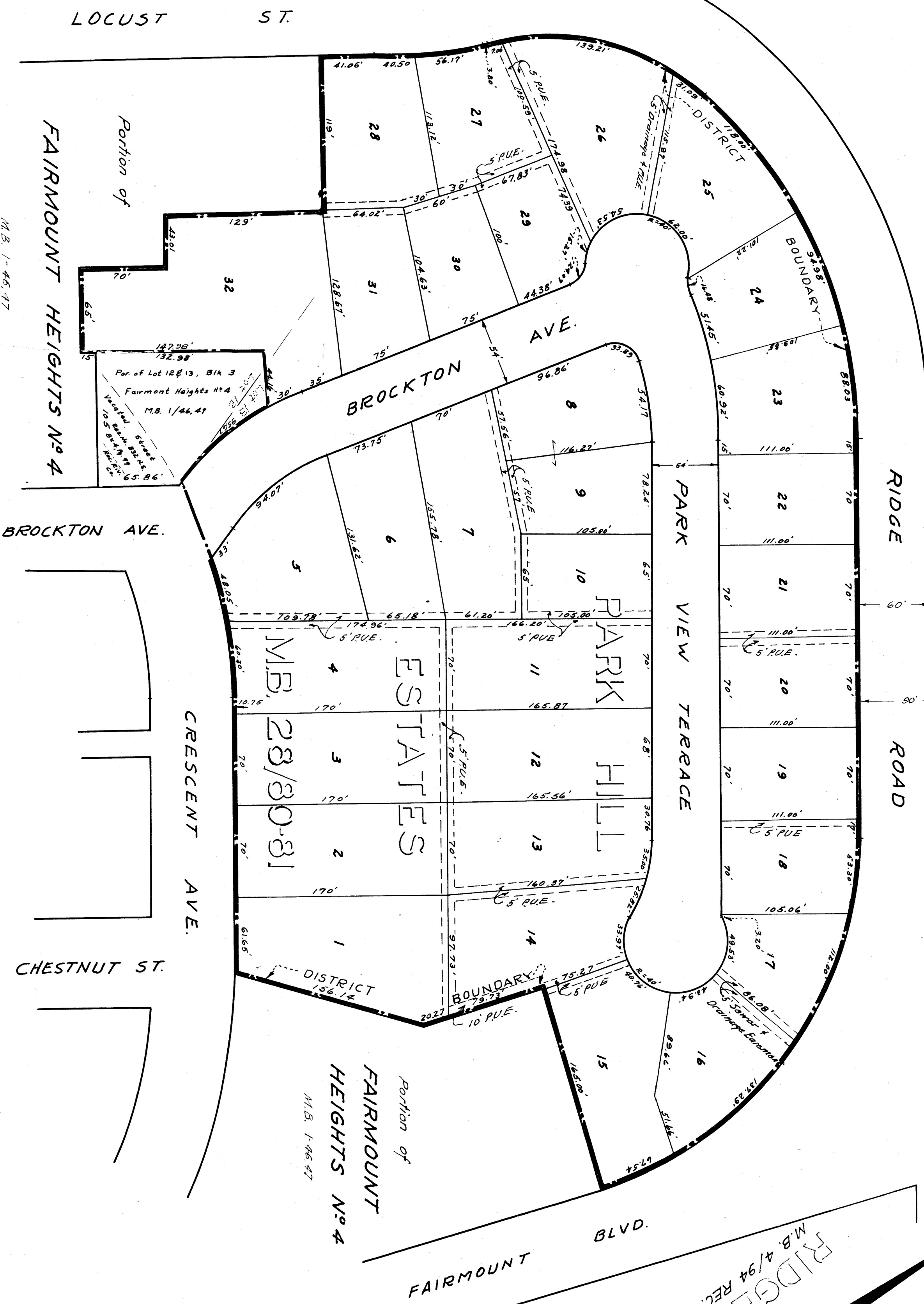


FAIRMOUNT

HEIGHTS
M.B. 1/A, 5, 43 REC. RIV. CO.

TRACT



OVERLOOK

FAIRMOUNT
BLVD.
M.B. 4/94 REC. RIV. CO.

TRACT

FAIRMOUNT HEIGHTS No. 4

BROCKTON AVE.

CRESCENT AVE.

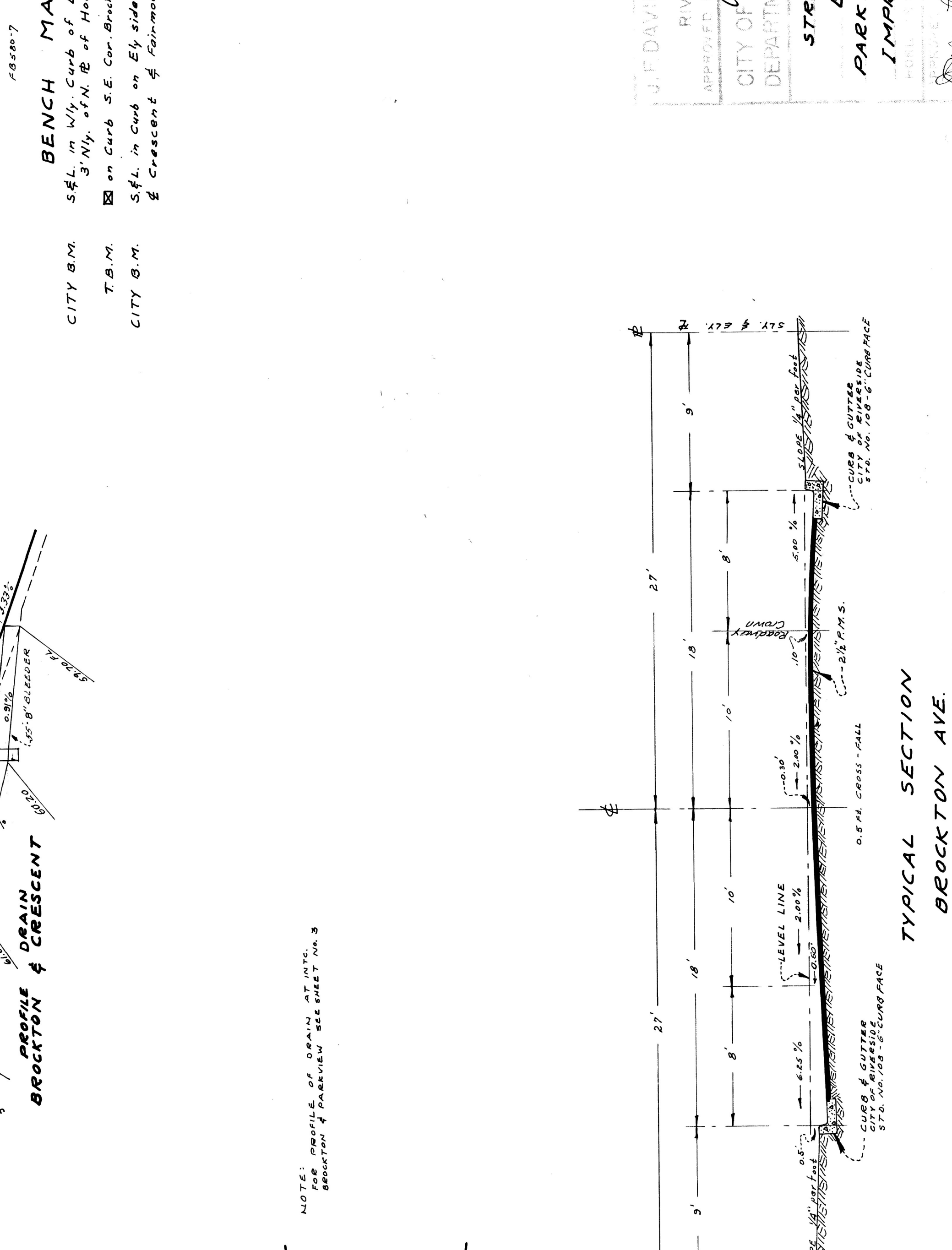
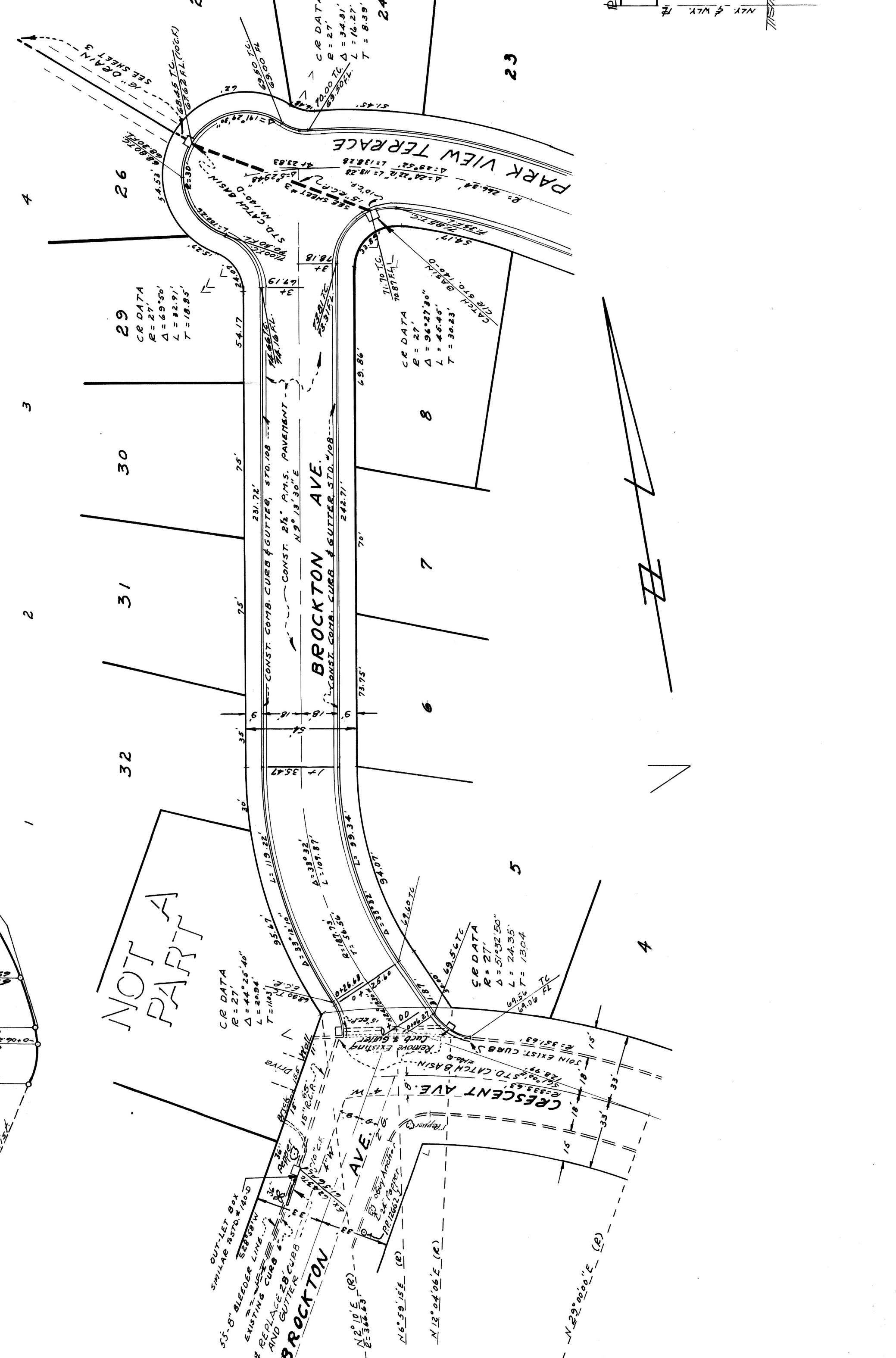
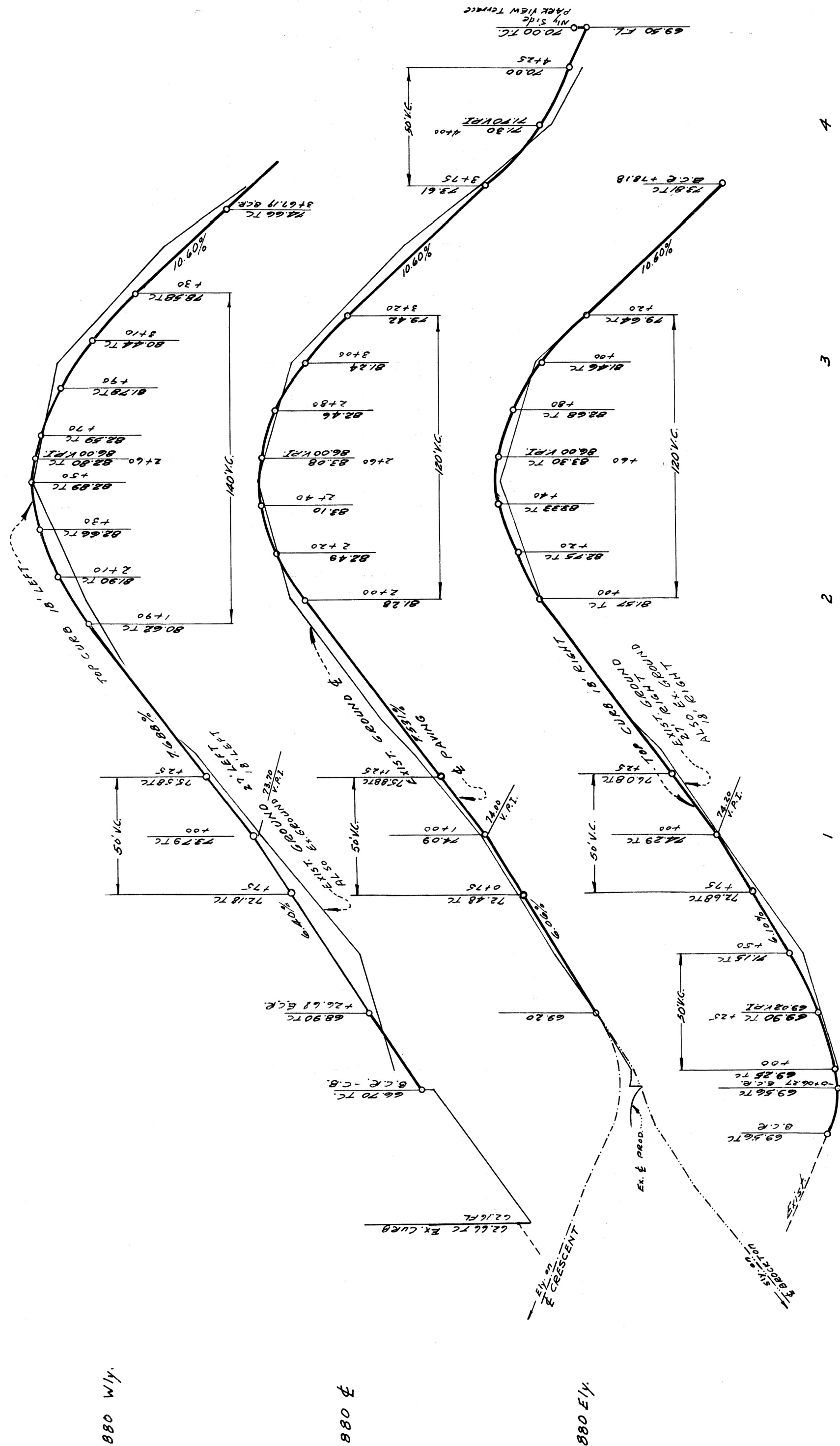
CHESTNUT ST.

RIDGE ROAD

MAP SHOWING THE LANDS INCLUDED WITHIN THE ASSESSMENT DISTRICT TO BE BENEFITED BY THE CONSTRUCTION OF CURBS, GUTTERS, PAVING, SEWERS, DRAINS, & STREET LIGHTS.

DISTRICT BOUNDARY SHOWN THUS: - - - - -

J. F. DAVIDSON-CIVIL ENGINEER	
RIVERSIDE, CALIFORNIA	
RE No. 862	
APPROVED BY: <i>[Signature]</i> DATE: 12-27-26	
CITY OF RIVERSIDE, CALIFORNIA	
DEPARTMENT OF PUBLIC WORKS	
MAP SHOWING	
PARK HILL ESTATES	
IMPROVEMENT DIST.	
HORIZ. SCALE 1"=60' VERT. SCALE NONE	
APPROVED BY: <i>[Signature]</i>	NO. R-99 A
DIRECTOR OF PUBLIC WORKS	SHEET 1 OF 10
DATE: March 24, 1927	



880 W/4
880 E
880 E 1/4

BENCH MARKS

CITY B.M. S.F.L. in W/4. Curb of Locust St. E.L. = 848.80
 3 N/4. of N. 1/2 of Houghton Ave. E.L. = 848.20

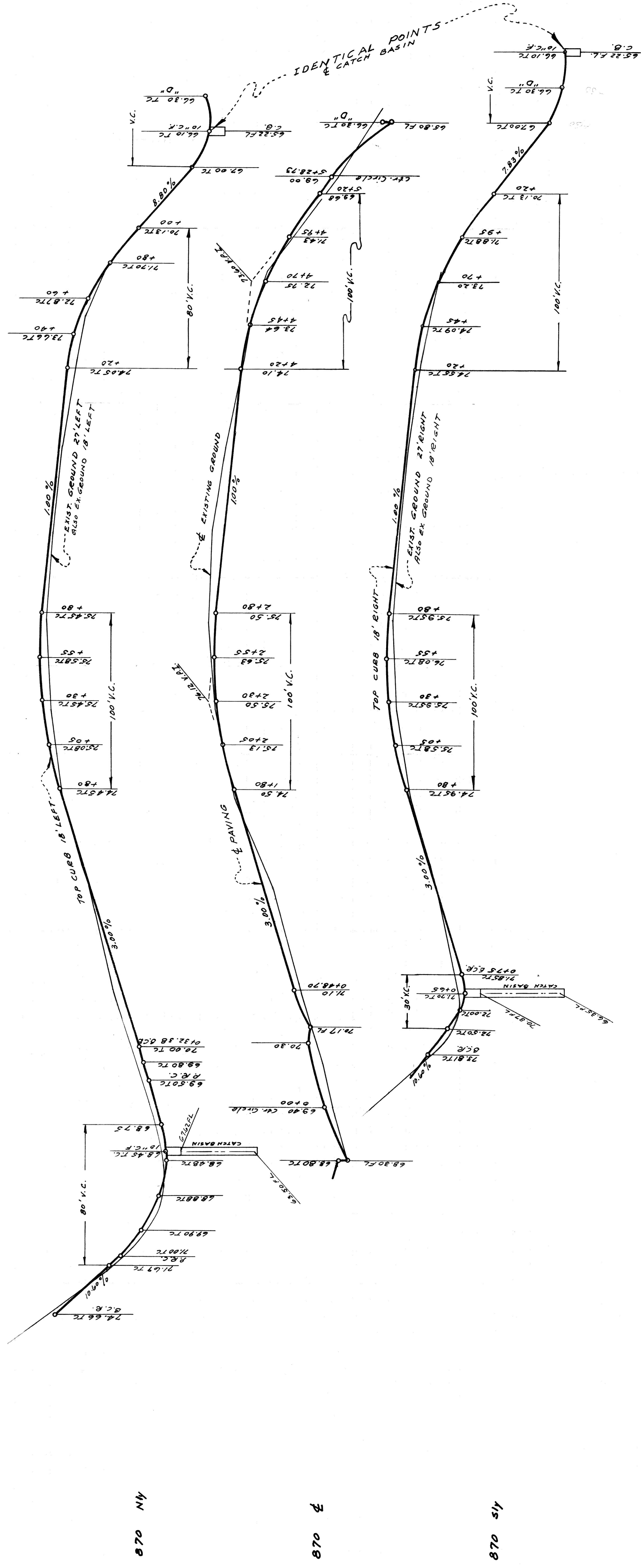
T.B.M. on Curb S.E. Cor. Brockton & Crescent E.L. = 846.20

CITY B.M. S.F.L. in Curb on Ely side of Park in E Crescent & Fairmount Ave. E.L. = 849.88

PROFILE DRAIN BROCKTON & CRESCENT

TYPICAL SECTION BROCKTON AVE. PARK VIEW TERRACE

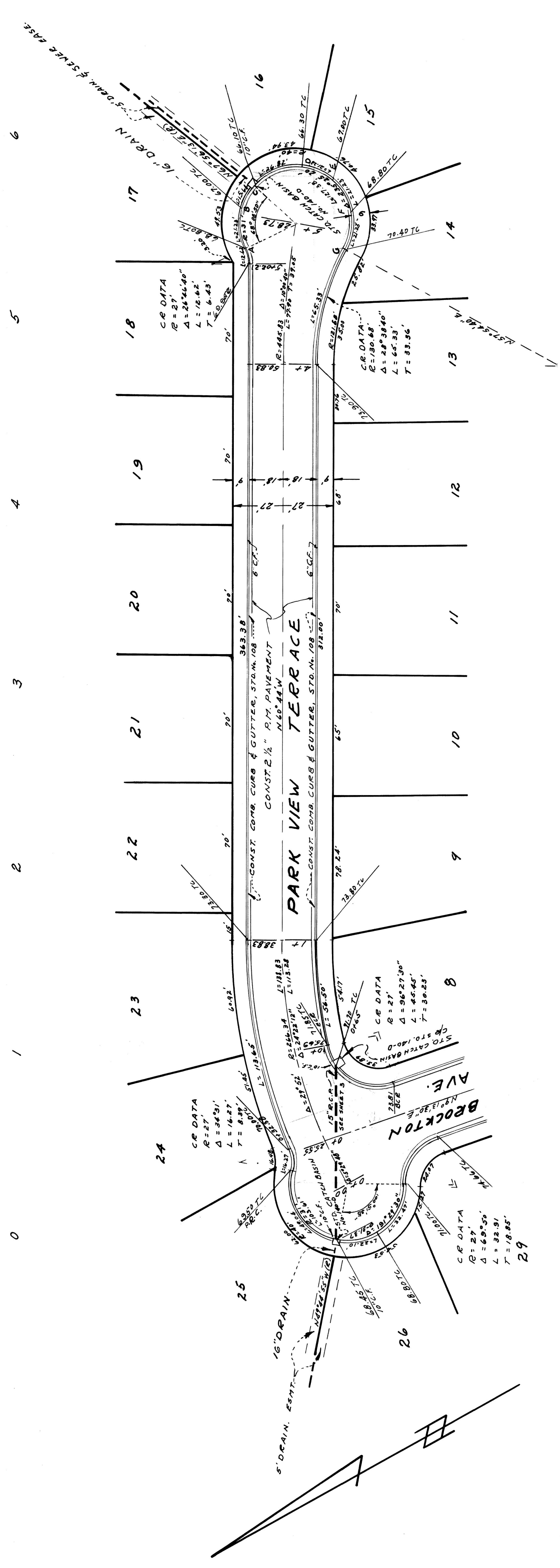
SCALE: 1" = 5'



870 NY

870 E

870 SY



FOR TYPICAL SECTION
 SEE SHEET NO. 1

48500-7

- BENCH MARKS -

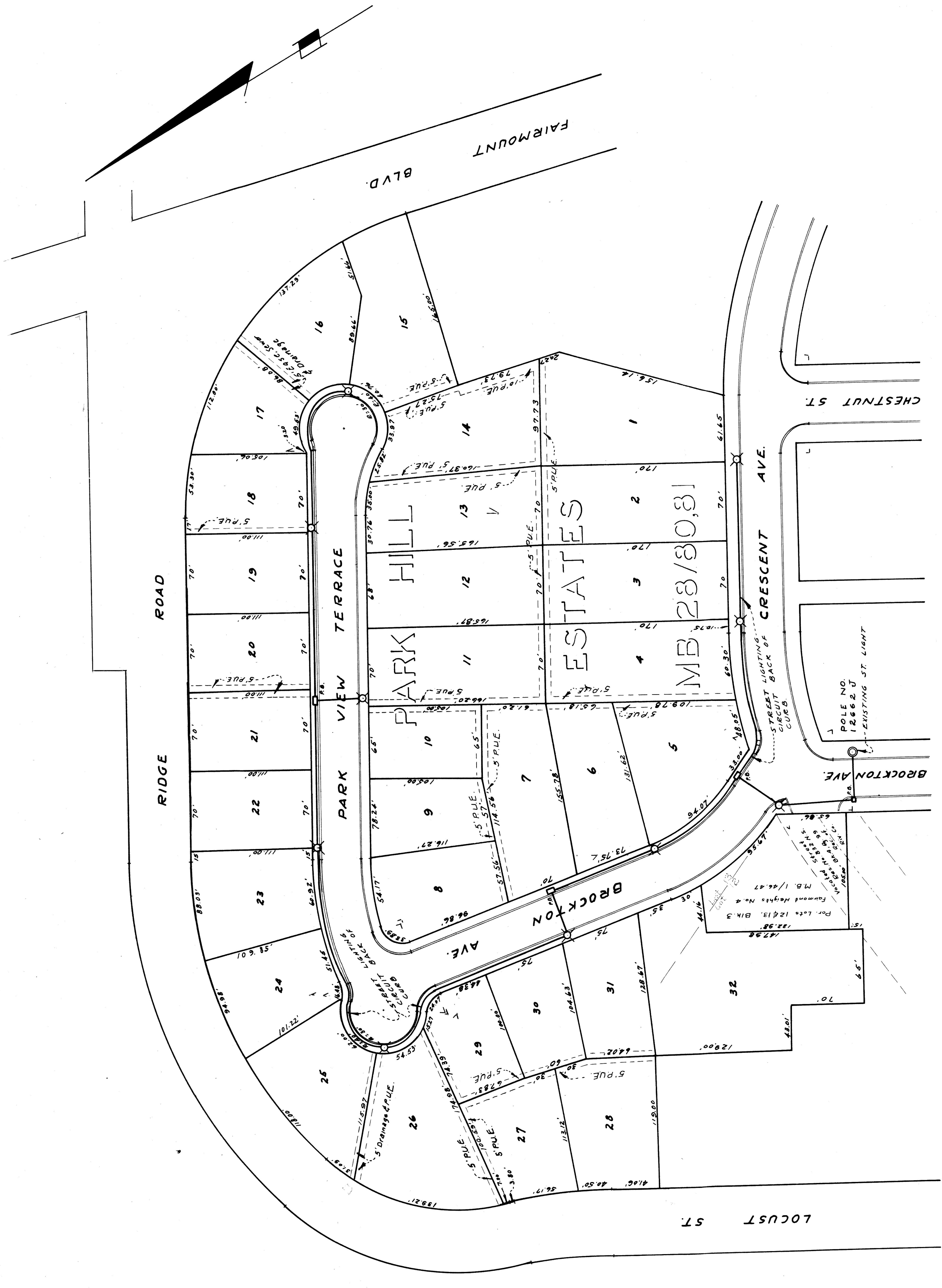
- CITY B.M. S&L IN WLY CURB OF LOCUST ST. 3 FT NLY. OF N. E. OF HOUGHTON AVE. EL. = 848.80
- CITY B.M. S&L IN CURB ON ELY. SIDE OF PARK IN & CRESCENT & FAIRMOUNT AVE. EL. = 849.88
- T.B.M. ON CURB S.E. COR. BROCKTON & CRESCENT. EL. = 866.20

J. J. Dunbar
 11-29-56

STREET
 PARK VIEW TERRACE
 PARK HILL ESTATES
 IMPROVEMENT DIST.
 1"=40'

INDEXED 1957

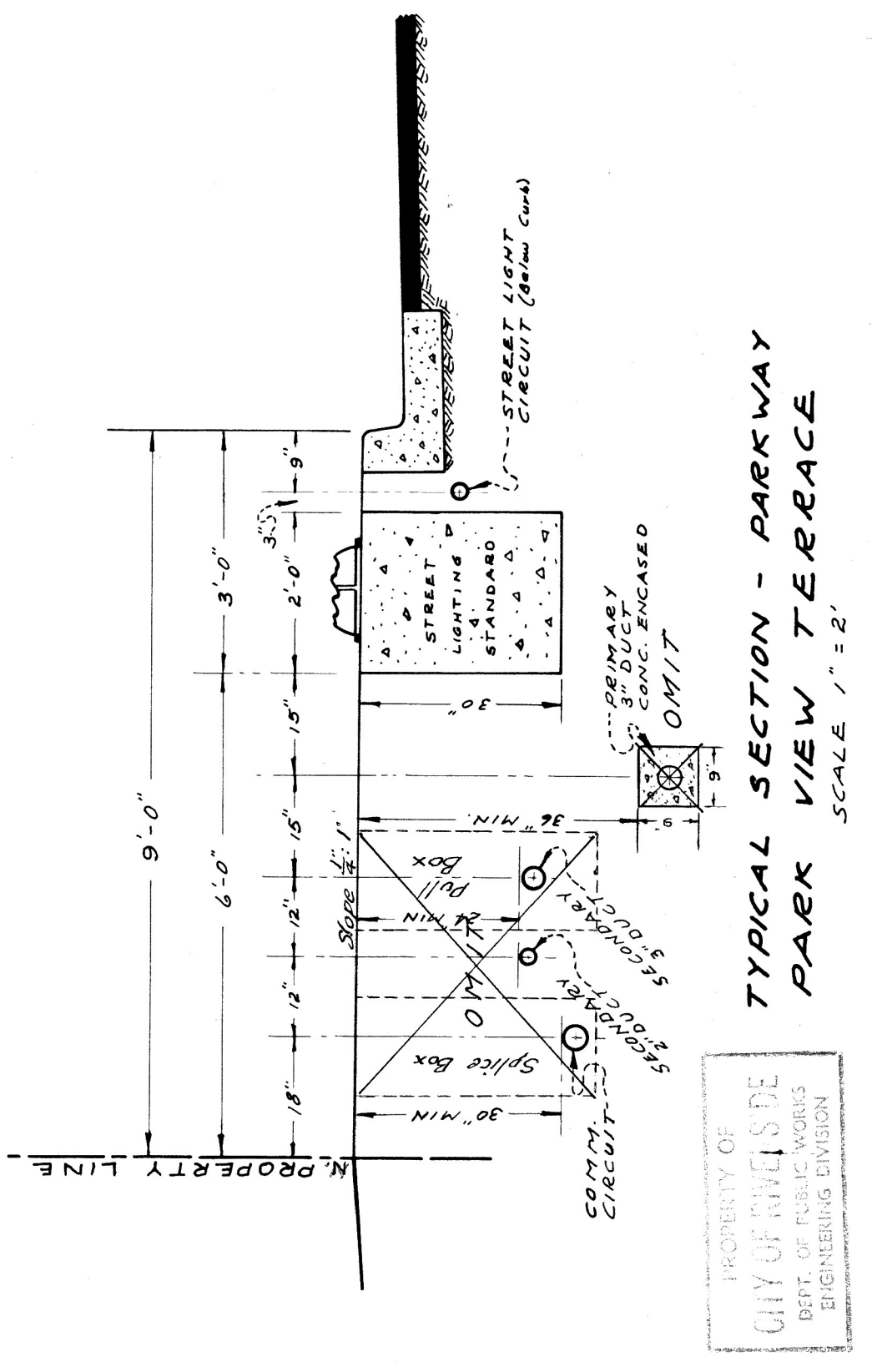
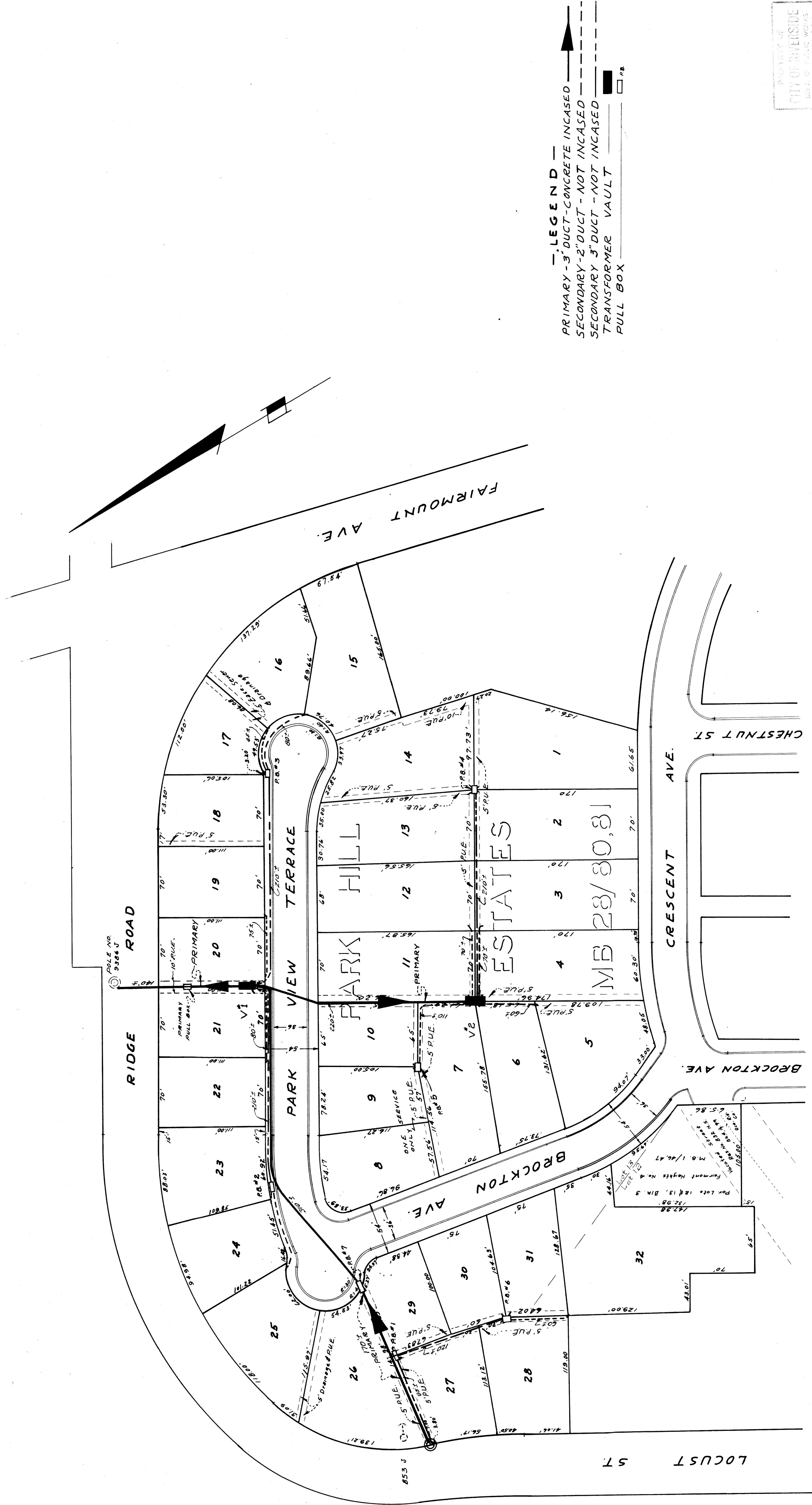
R-99
 3 10
 Nov 29 1957



Lighting Standard - Drawing No L5-11211
Pull Box - Drawing No U2-11133

For location of conduit and lighting standard
in relation to curb,
see Standard Drawing No L5-11211
Definite location of lighting standards
and pull boxes on the streets will be
determined in the field.

INDEXED 1957



NOTE:
ALL CONSTRUCTION SHOWN ON THIS PLAN IS NOT A PART OF THE "PARK HILL ESTATES IMPROVEMENT DISTRICT".

REVISION:
REVISED TO ELIMINATE UNDERGROUND COMMUNICATION AND ELECTRIC POWER SYSTEM.
APPROVED BY Don Campbell
DATE 5/20/57
UTILITIES ENGINEER

NOTE:
INSTALLATION TO BE IN ACCORDANCE WITH CITY OF RIVERSIDE LIGHT & WATER DEPT'S UNDERGROUND ELECTRICAL CONSTRUCTION REQUIREMENTS.
PULL BOX DWG. NO. U2-11237
VAULT DWG. NO. U2-10005

ALL DUCTS, VAULTS AND PULL BOXES WILL BE DEFINITELY LOCATED IN THE FIELD
INDEXED 1957

LEGEND
PRIMARY 3" DUCT - CONCRETE INCASED
SECONDARY 2" DUCT - NOT INCASED
SECONDARY 3" DUCT - NOT INCASED
TRANSFORMER VAULT
PULL BOX

PROPERTY OF
CITY OF RIVERSIDE
DEPT. OF PUBLIC WORKS
ENGINEERING DIVISION

J.F. DAVIDSON - CIVIL ENGINEER
RIVERSIDE, CALIFORNIA
RE. No. 862
APPROVED BY J.F. Davidson DATE 4/22/56

CITY OF RIVERSIDE, CALIFORNIA
DEPARTMENT OF PUBLIC WORKS

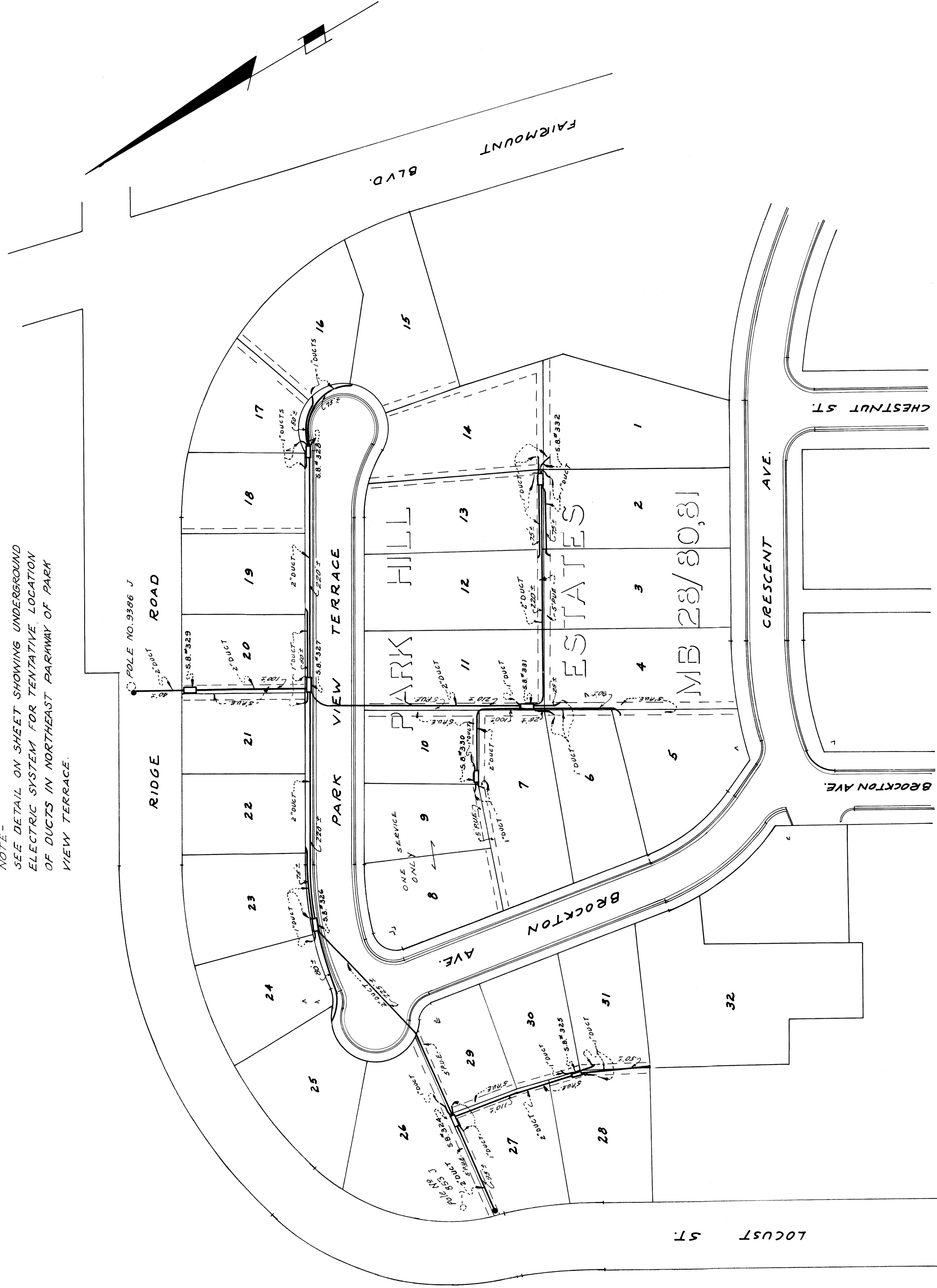
MAP SHOWING UNDERGROUND
ELECTRIC POWER SYSTEM
PARK HILL ESTATES
IMPROVEMENT DIST.

HORIZ. SCALE 1" = 60' VERT. SCALE 1/8" = 10'

APPROVED BY
Don Campbell
DEPT. OF LIGHT & WATER
DATE 11-29-56

NO. R-99
SHEET 6 OF 10

NOTE -
SEE DETAIL ON SHEET SHOWING UNDERGROUND
ELECTRIC SYSTEM FOR TENTATIVE LOCATION
OF DUCTS IN NORTHEAST PARAWAY OF PARK
VIEW TERRACE.



— LEGEND —
SERVICE DUCT - NOT INCASED s.g.
SPlicing BOX s.g.
COMMUNICATION DUCTS MAY BE LOCATED
12" FROM ELECTRIC POWER DUCTS.
ALL DUCT RUNS AND SPlicing BOXES
WILL BE DEFINITELY LOCATED IN THE
FIELD.

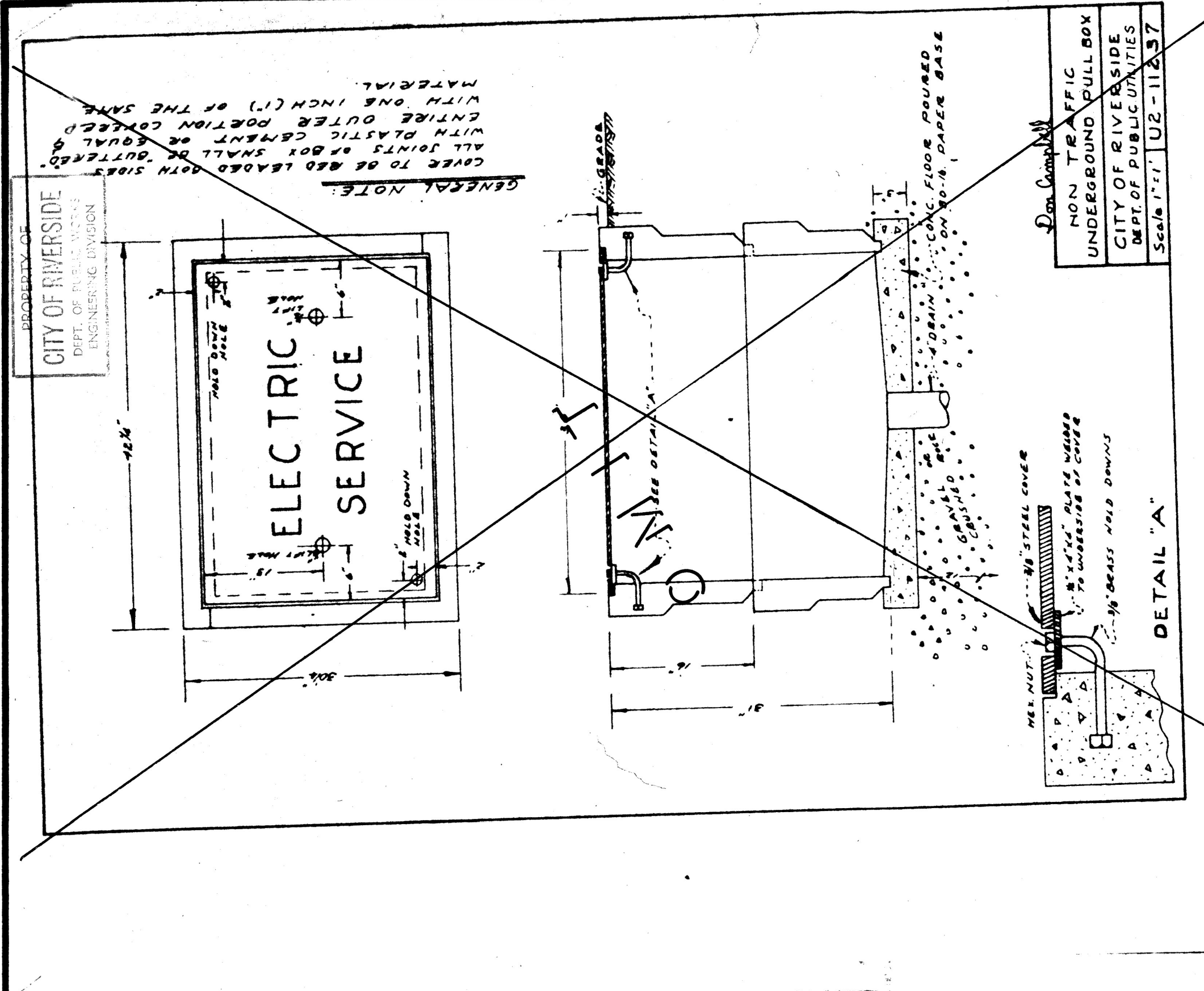
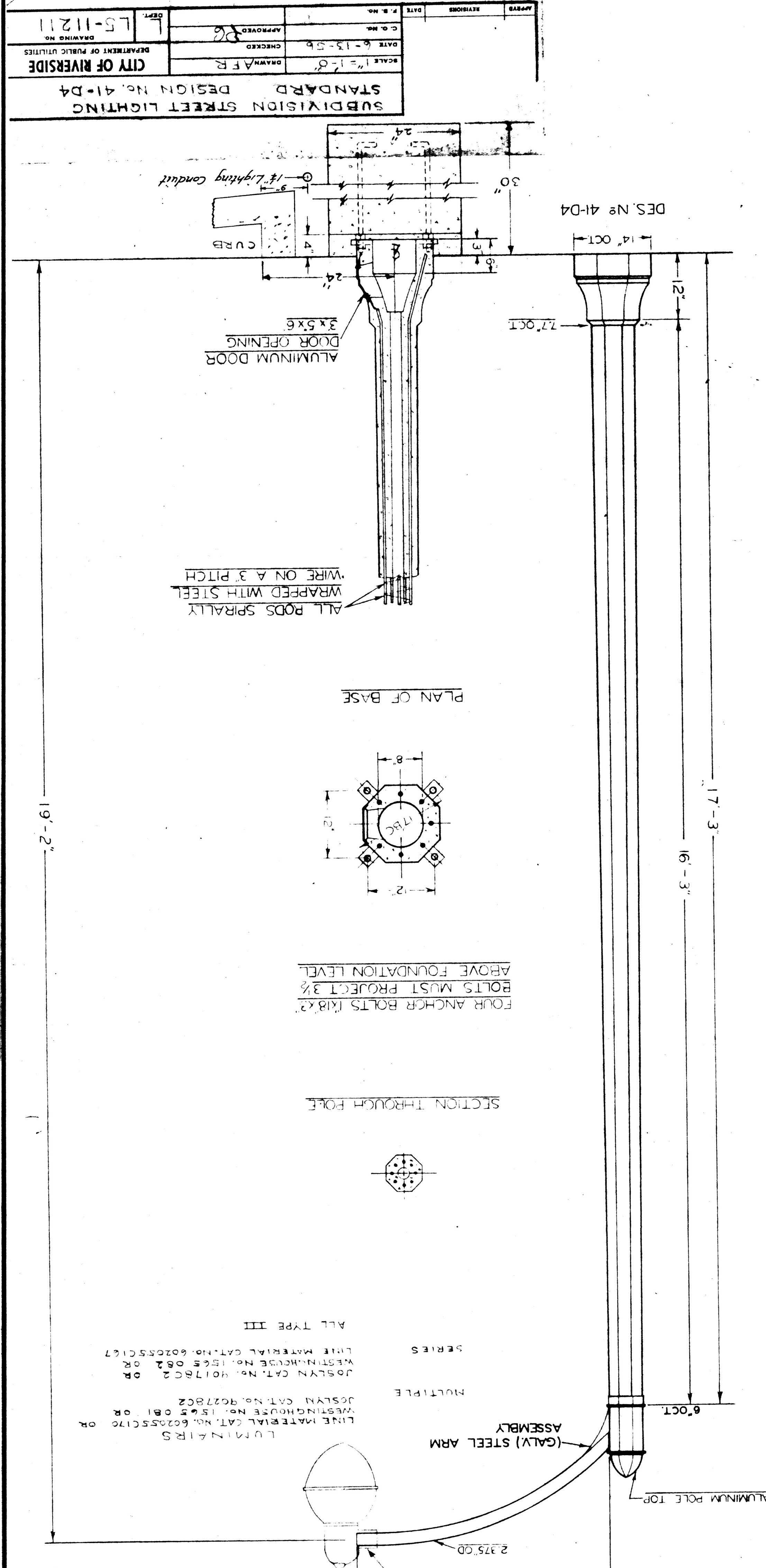
APPROVED AS TO PLAN
SUBJECT TO INSTALLATION ACCORDING
TO PACIFIC TEL. & TEL. CO. STANDARDS
John C. Quinn
DISTRICT PLANT ENGINEER
PACIFIC TEL. & TEL. CO.
DATE 4-9-57

REVISION
REVISED TO ELIMINATE UNDERGROUND
COMMUNICATION AND ELECTRIC POWER
SYSTEM.
APPROVED
Wm. J. ...
DIRECTOR OF PUBLIC WORKS
DATE 10-20-57

NOTE:
ALL CONSTRUCTION SHOWN ON
THIS PLAN IS NOT A PART OF
THE "PARK HILL ESTATES
IMPROVEMENT DISTRICT".

MAP SHOWING UNDERGROUND
COMMUNICATION SYSTEM
PARK HILL ESTATES
IMPROVEMENT DIST.
1"=60'

INDEXED 1957
R-99
7 10



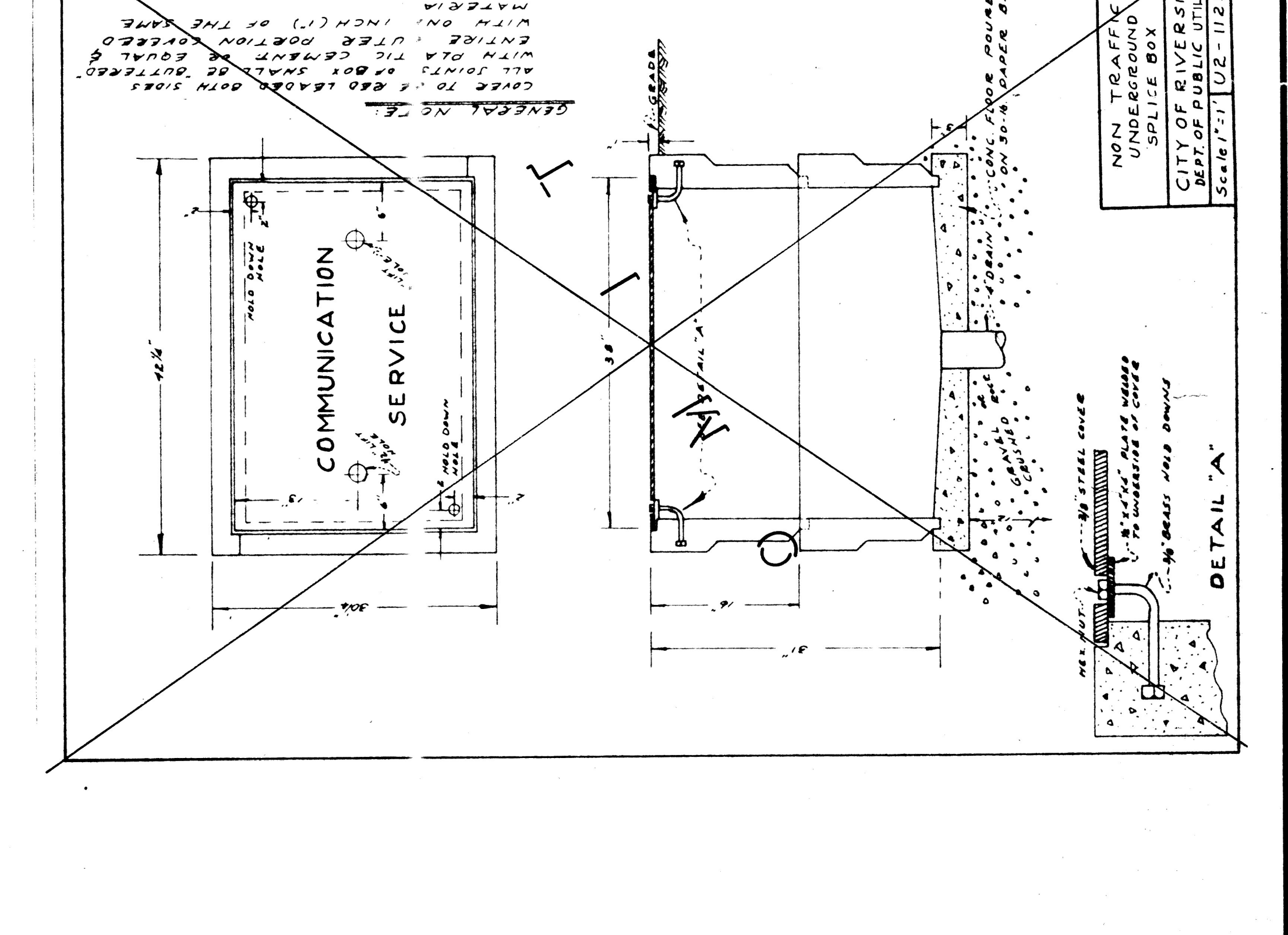
NON TRAFFIC UNDERGROUND PULL BOX
CITY OF RIVERSIDE
DEPT. OF PUBLIC UTILITIES
Scale 1/2" = 1'-0"

APPROVED BY: *J. F. Davidson* DATE: 11-28-56

J. F. DAVIDSON-CIVIL ENGINEER
RIVERSIDE, CALIFORNIA
RE. NO. 862

CITY OF RIVERSIDE
DEPT. OF PUBLIC UTILITIES
NO. R-99
SHEET 8 OF 10

STANDARD PLANS
STRUCTURAL DETAILS
PARK HILL ESTATES
IMPROVEMENT DISTRICT
HORIZ. SCALE 1" = 10'-0" VERT. SCALE 1" = 2'-0"



PROPERTY OF
CITY OF RIVERSIDE
DEPT. OF PUBLIC UTILITIES
ENGINEERING DIVISION

APPROVED BY: *J. F. Davidson* DATE: 11-28-56

J. F. DAVIDSON-CIVIL ENGINEER
RIVERSIDE, CALIFORNIA
RE. NO. 862

CITY OF RIVERSIDE
DEPT. OF PUBLIC UTILITIES
NO. R-99
SHEET 8 OF 10

STANDARD PLANS
STRUCTURAL DETAILS
PARK HILL ESTATES
IMPROVEMENT DISTRICT
HORIZ. SCALE 1" = 10'-0" VERT. SCALE 1" = 2'-0"

NOTE
ROCK BASE SHALL BE 1/4" INCH GRAVEL
CRUSHED ROCK-MINIMUM 1/2 CUYD
WOOD FORM SHALL BE OF 1X12 INCH
FORM LUMBER & BE REMOVED AFTER
CONCRETE HAS SET
CONCRETE SHALL BE CLASS B &
ENVELOP ENTIRE FORM & PORTION
OF BOX AS SHOWN
FLOOR 4" 2" MINIMUM DRAIN PIPE TO BE
INSTALLED FOR BALLAST INSTALLATION
ONLY

SPECIFICATION
CONCRETE BOX MFG. BY BROOKS PRODUCTS, INC.
330 S. FAIR OAK S., PASADENA, CALIF. OR EQUAL.
COVER LETTERING: 1" INCISED, LETTERS AS
SPECIFIED - TRAFFIC SIGNAL - STREET
LIGHTING - HIGH VOLTAGE

No. 5 - 15X25X12 PULL BOX - FOR
TRAFFIC SIGNAL & STREET LIGHTING

SCALE NONE DRAWN A.F.R.
DATE 1-25-56 CHECKED BY: *J. F. Davidson* APPROVED BY: *J. F. Davidson*

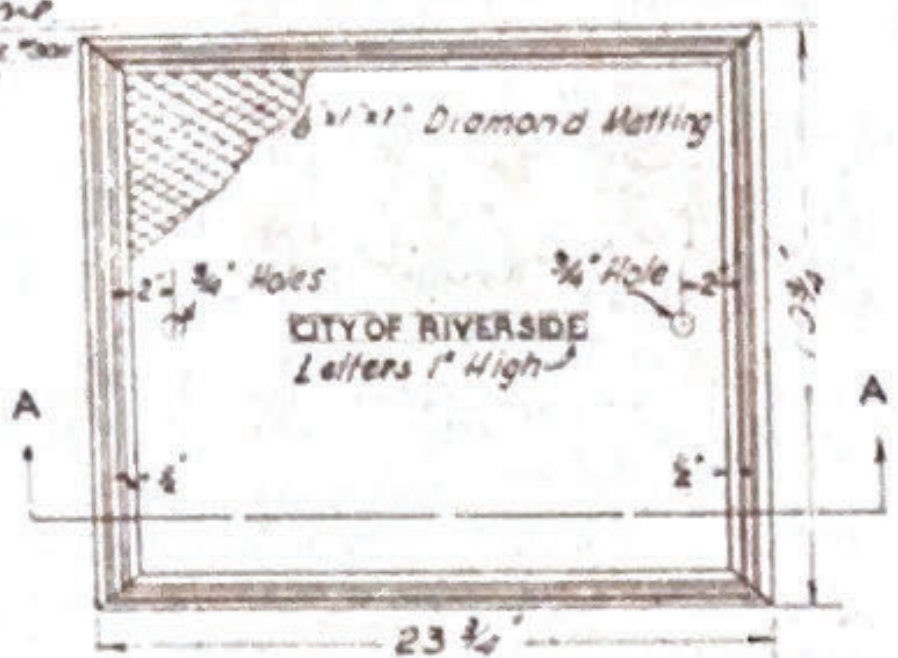
CITY OF RIVERSIDE
DEPT. OF PUBLIC UTILITIES
DRAWING NO. U2-1113

INDEXED 1057

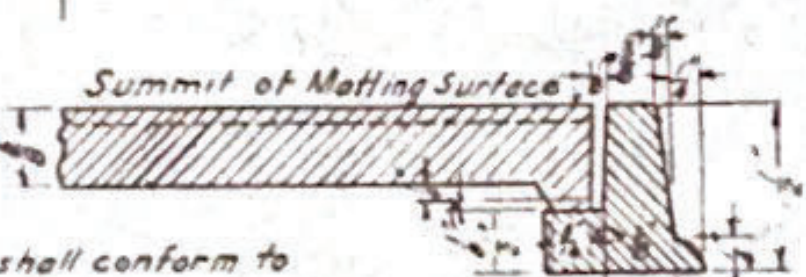
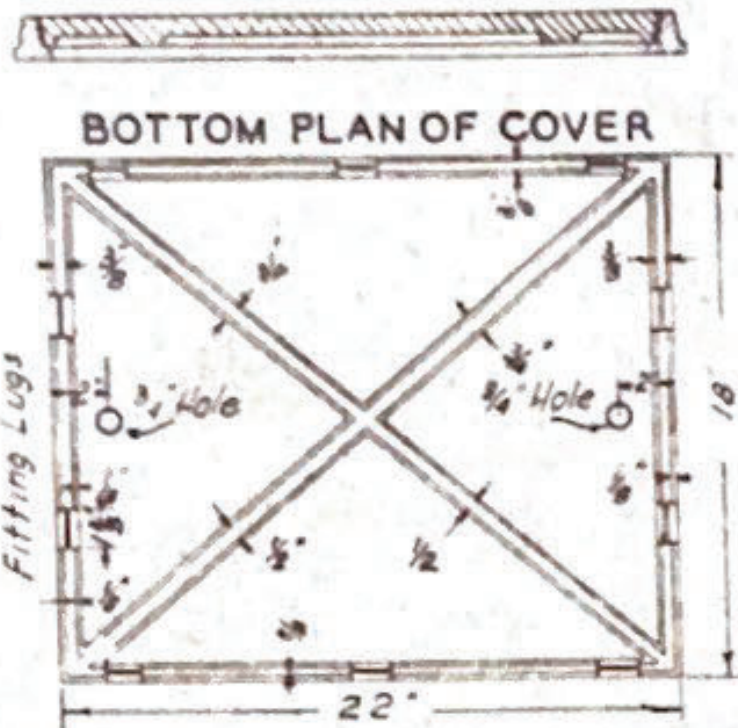
PROPERTY OF
CITY OF RIVERSIDE
DEPT. OF PUBLIC WORKS
ENGINEERING DIVISION

DETAILS OF
CATCH BASIN FRAME AND COVER
CITY OF RIVERSIDE
PLAN OF FRAME AND COVER

APPROVED: *M. N. Irvine*
M.H. IRVINE, REG. CE NO. 3001
CITY ENGINEER



SECTION A-A

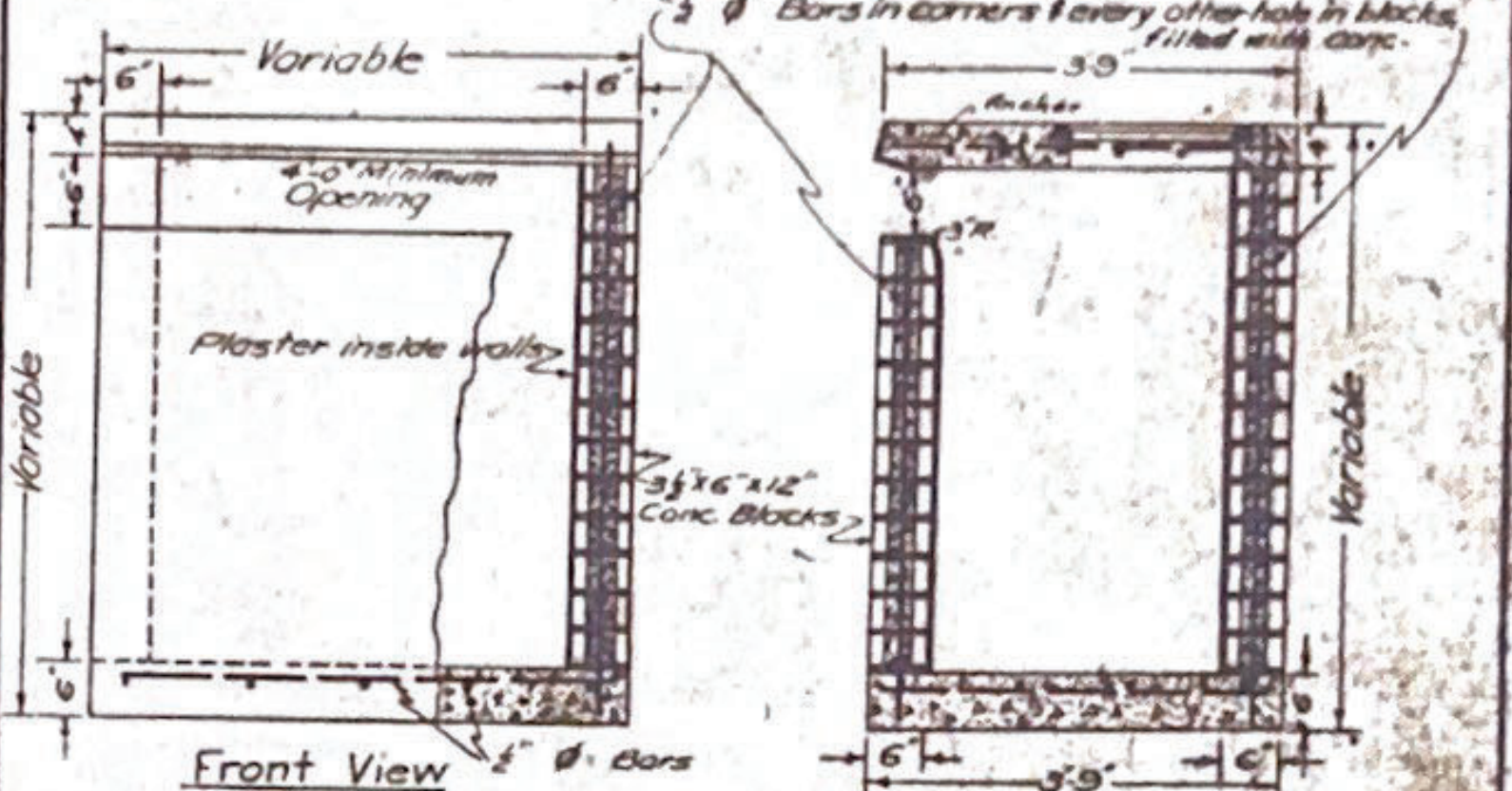
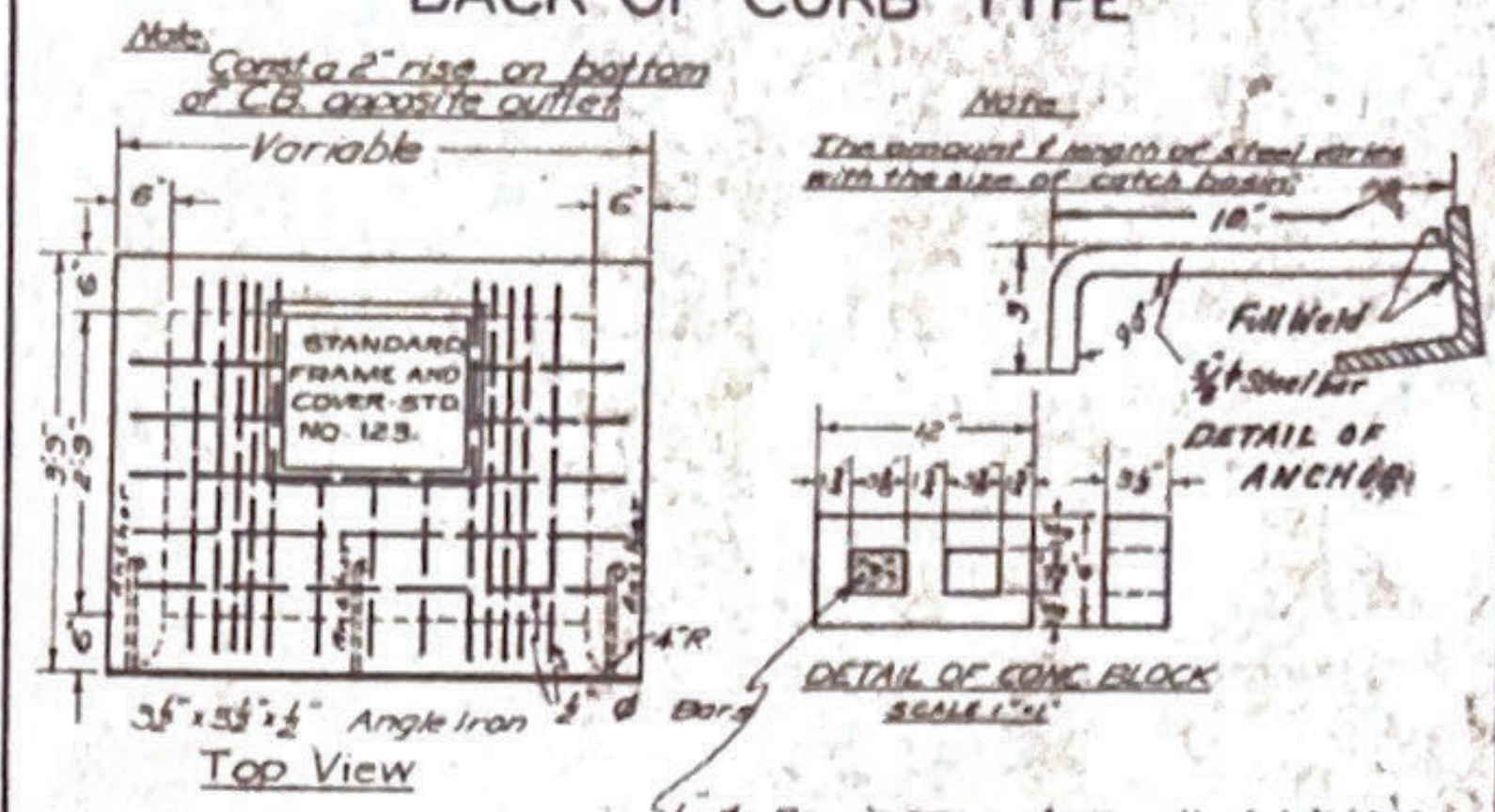


Note:
a. The material and finish shall conform to the Specifications applicable thereto.
b. Cover shall fit in either position.
c. Locate frame so as to bear over ends of corrugated Culverts.
d. Frame and cover shall be set to sidewalk elevations.

SHEET NO. 123

PLAN OF
STORM WATER CATCH BASIN
BACK OF CURB TYPE

STD. NO. 140-D



Side View

Note:
Pipe size and outlet to be shown on General Plans.
Standard C.B. 4'-0\"/>

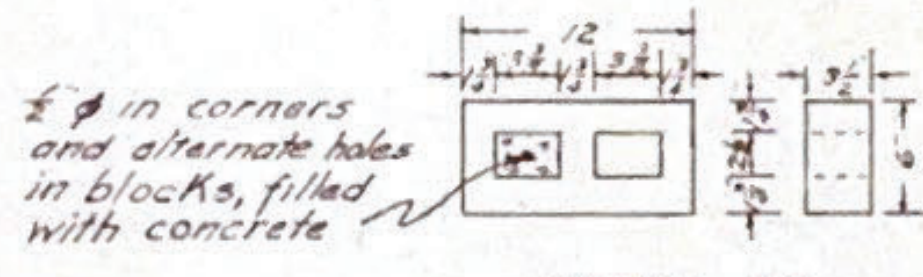
City of Riverside
Eng. Dept.
Scale
1/2\"/>

STANDARD PLAN
NO. 140-E
CONCRETE BLOCK CLEANOUT BOX
FOR STORM DRAINS

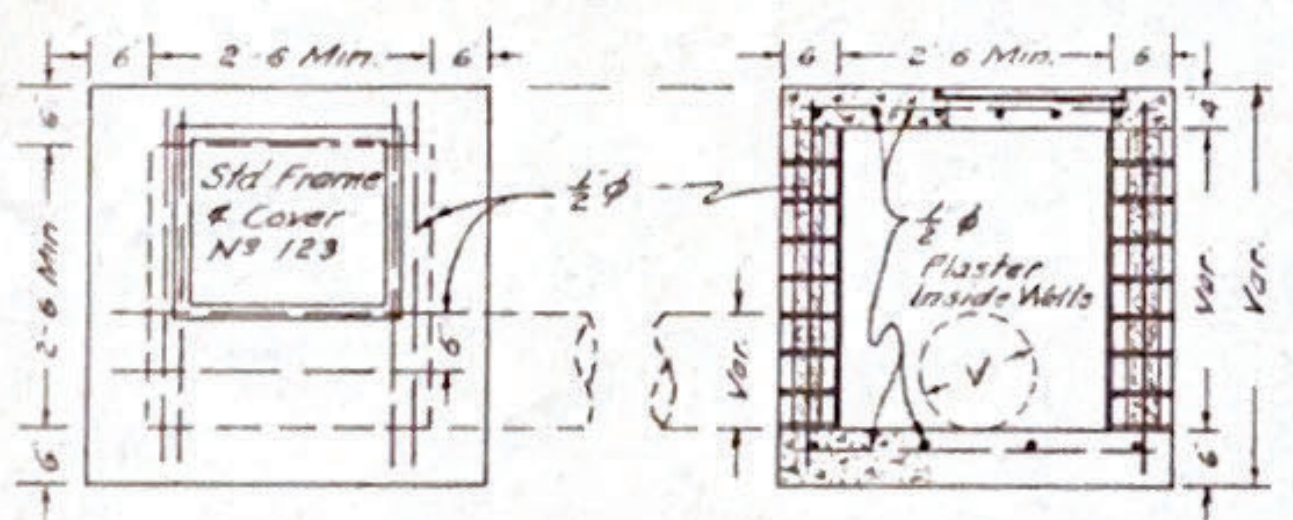
CITY OF RIVERSIDE - ENGINEER DEPT.

NOTE: BOX AND PIPE SIZES TO BE SHOWN ON GENERAL PLANS

APPROVED: *M. N. Irvine*
M.H. IRVINE - CITY ENGINEER
REG. CE NO. 3011



DETAIL OF CONCRETE BLOCK
SCALE: 1\"/>



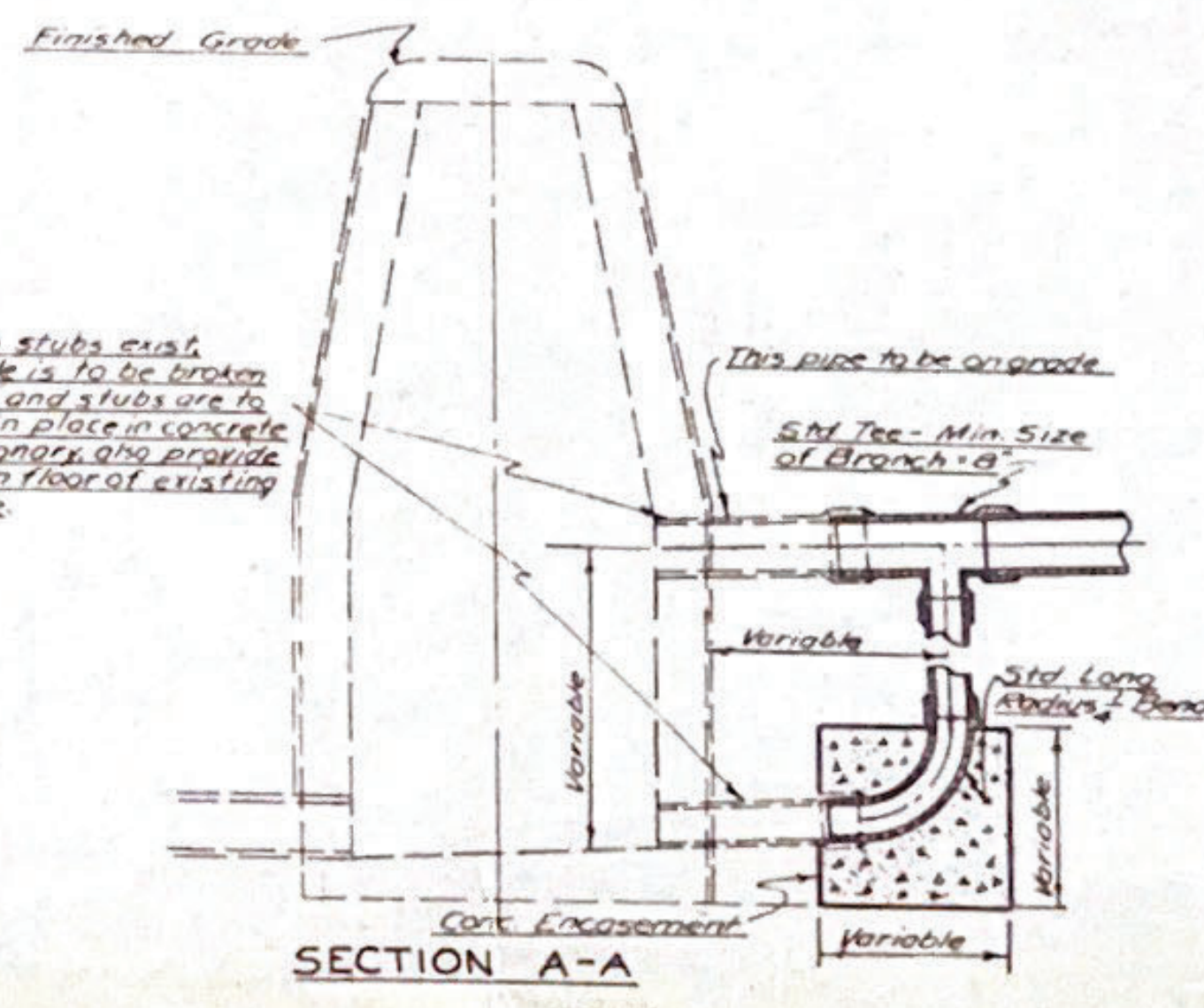
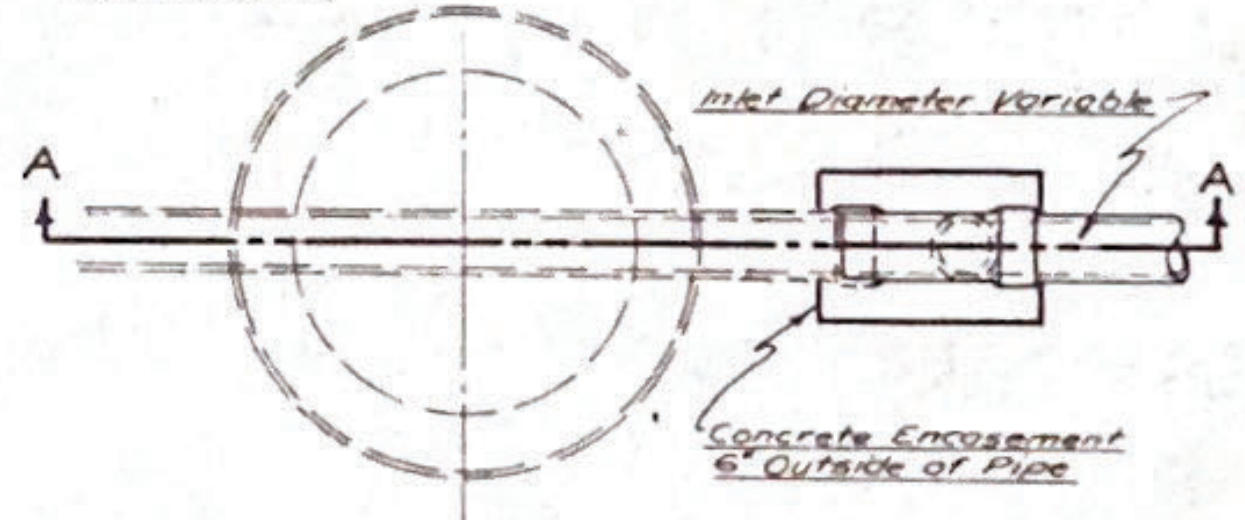
PLAN SIDE ELEVATION

DETAILS OF CLEANOUT BOX
SCALE: 1\"/>

PROPERTY OF
CITY OF RIVERSIDE
DEPT. OF PUBLIC WORKS
ENGINEERING DIVISION

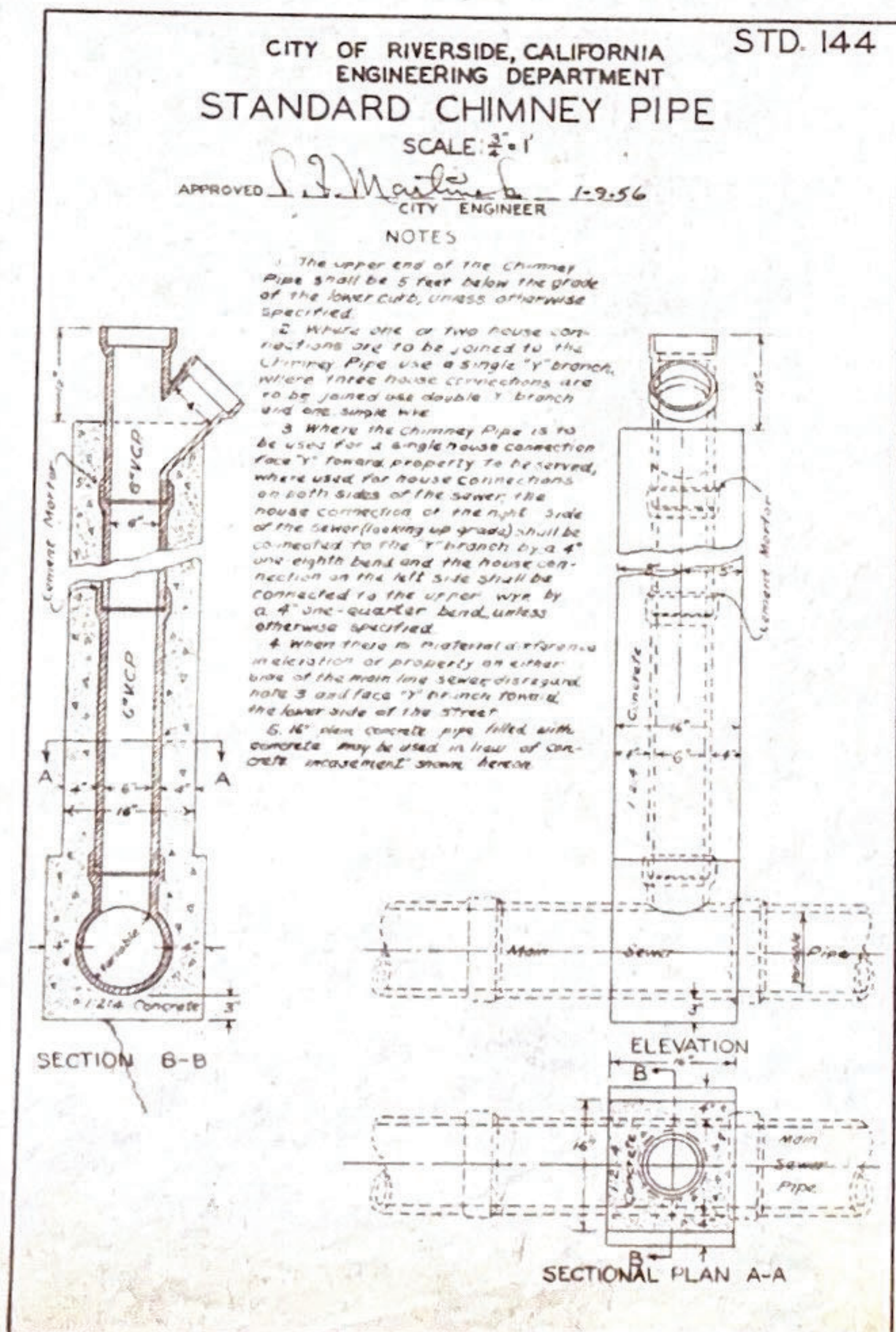
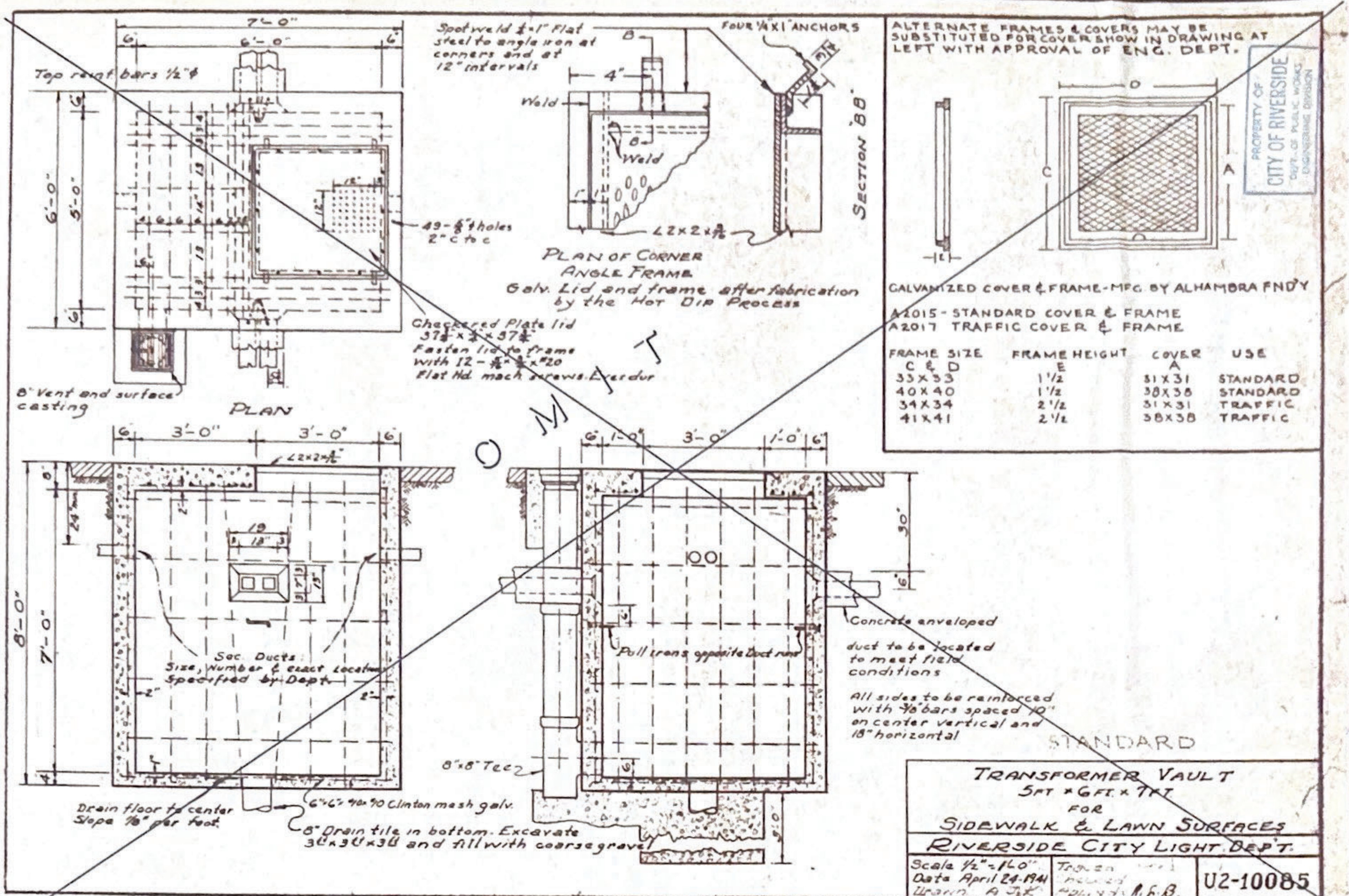
CITY OF RIVERSIDE, CALIFORNIA
ENGINEERING DEPARTMENT
STD. DROP ONLY TO EXISTING MANHOLE
SCALE: 3/8\"/>

APPROVED: *M. N. Irvine*
M.H. IRVINE, REG. CE NO. 3011
CITY ENGINEER



NOTE: If no stubs exist, manhole is to be broken through and stubs are to be set in place in concrete or masonry, also provide cover in floor of existing manhole.

141-H



INDEXED 1957

PROPERTY OF CITY OF RIVERSIDE DEPT. OF PUBLIC WORKS ENGINEERING DIVISION

J.F. DAVIDSON-CIVIL ENGINEER
RE No 862
RIVERSIDE, CALIFORNIA
APPROVED BY *J.F. Davidson* DATE *1/22/56*

CITY OF RIVERSIDE, CALIFORNIA
DEPARTMENT OF PUBLIC WORKS

STANDARD PLANS
STRUCTURAL DETAILS
PARK HILL ESTATES
IMPROVEMENT DISTRICT

HORIZ SCALE AS SHOWN VERT SCALE AS SHOWN

APPROVED BY *J.P. Martin*
Director of Public Works
DATE *March 29, 1957*

NO. R-99
SHEET 10 OF 10