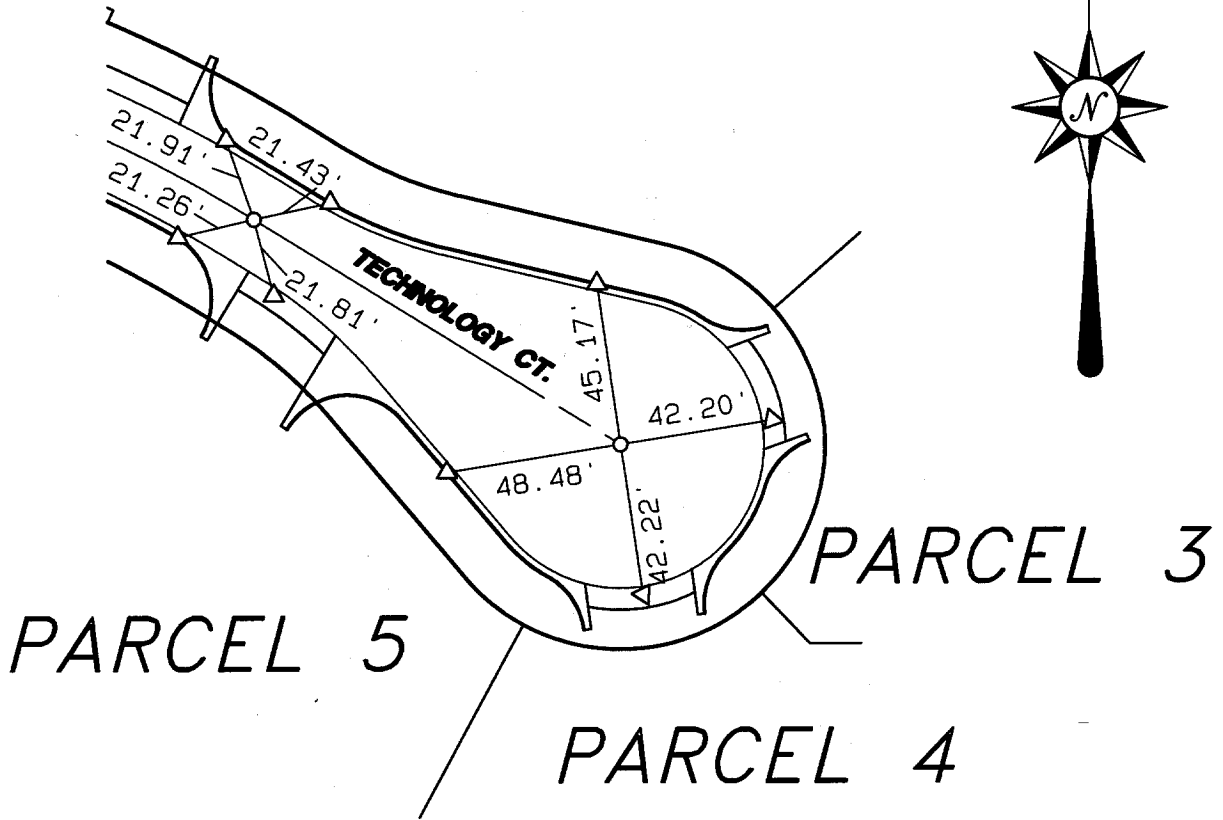


PARCEL MAP NO. 29161

PARCEL 2



- INDICATES BOAT SPIKE & WASHER TAGGED L.S. 5529
- △ INDICATES "RAM-SET" NAIL



G:\1998\98-TIES\TIES.pro

STREET TECHNOLOGY COURT
10062 TIF
X-STREET CUL-DE-SAC
OFFICE USE ONLY

SCALE: N.T.S.

DATE: 8-6-2001

DR. BY: MLA

W.O.: 98-417

F.B.: 1998/534-544

OFFICIAL TIE PLAT CITY OF RIVERSIDE

PREPARED BY: ALBERT A. WEBB ASSOCIATES
ENGINEERING CONSULTANTS
3788 MCCRAY ST. RIVERSIDE, CA. 92506

SHEET

4

OF 4 SHEETS

FILE NO.: TIES.PRO