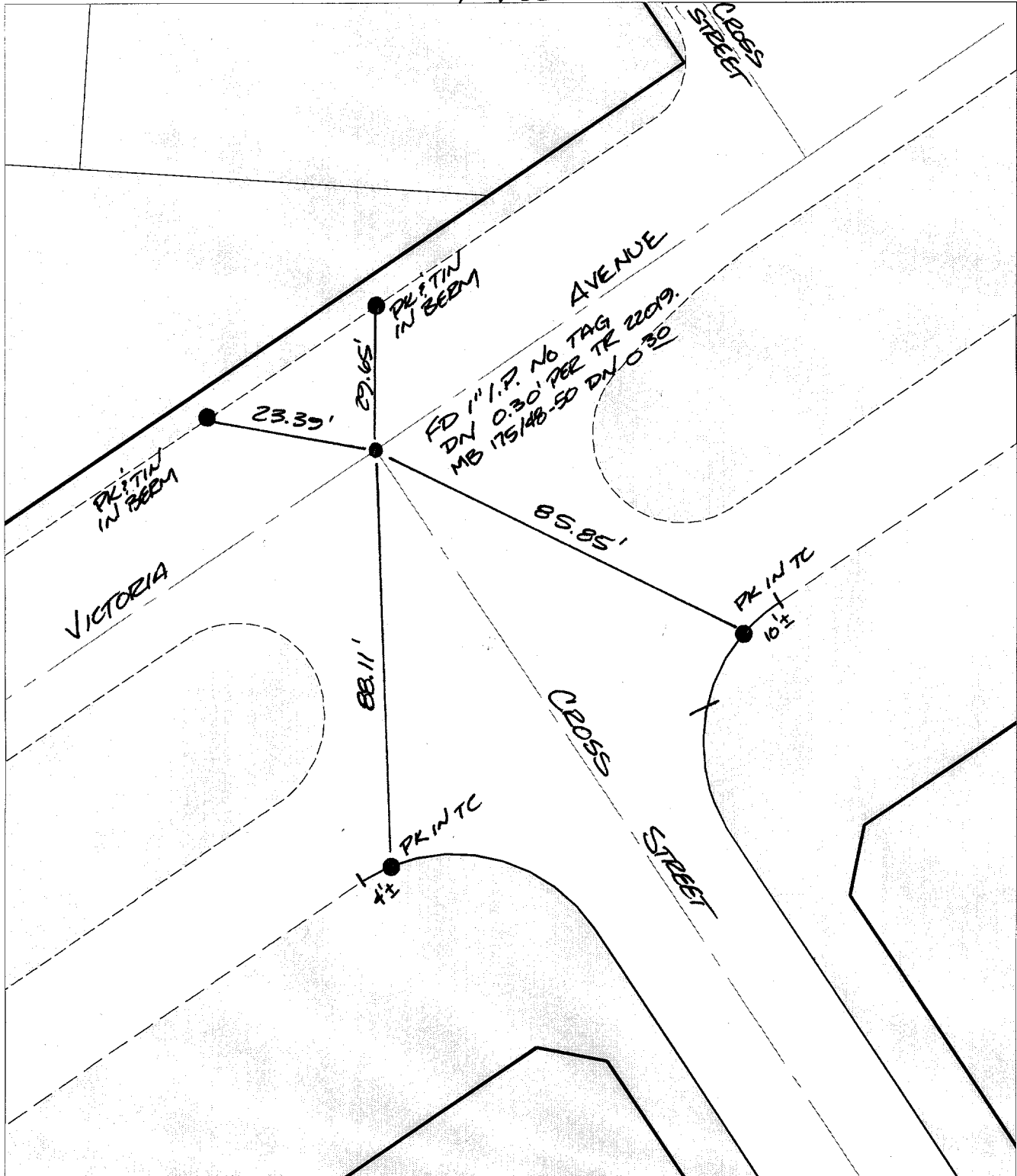


SWING TIES



Street: 10137

VICTORIA AVE TIE

X-Street: OFFICIAL USE ONLY

CROSS ST (S'LY)

- ✕ FD. Ramset Nail on T/C    ● FD. LD. & TK. on T/C
- FD. "C" Nail on T/C      ○ Set LD. & TK. on T/C

P.K. and City Engineer tag to be set @ surface after street construction is complete. (If possible)

Scale: 1" = 30'  
 Date: 04/22/02  
 Drawn by: survey  
 F.B.:  
 TR-Sec: T3SR6W-24

## OFFICIAL TIE PLAT

### CITY OF RIVERSIDE

*These ties are for the purpose of perpetuating the found monumentation. No claim is made as to the relationship of the points or lines shown hereon to true boundary locations.*



Sheet 1 of 1  
 Cadme MB: 80-8