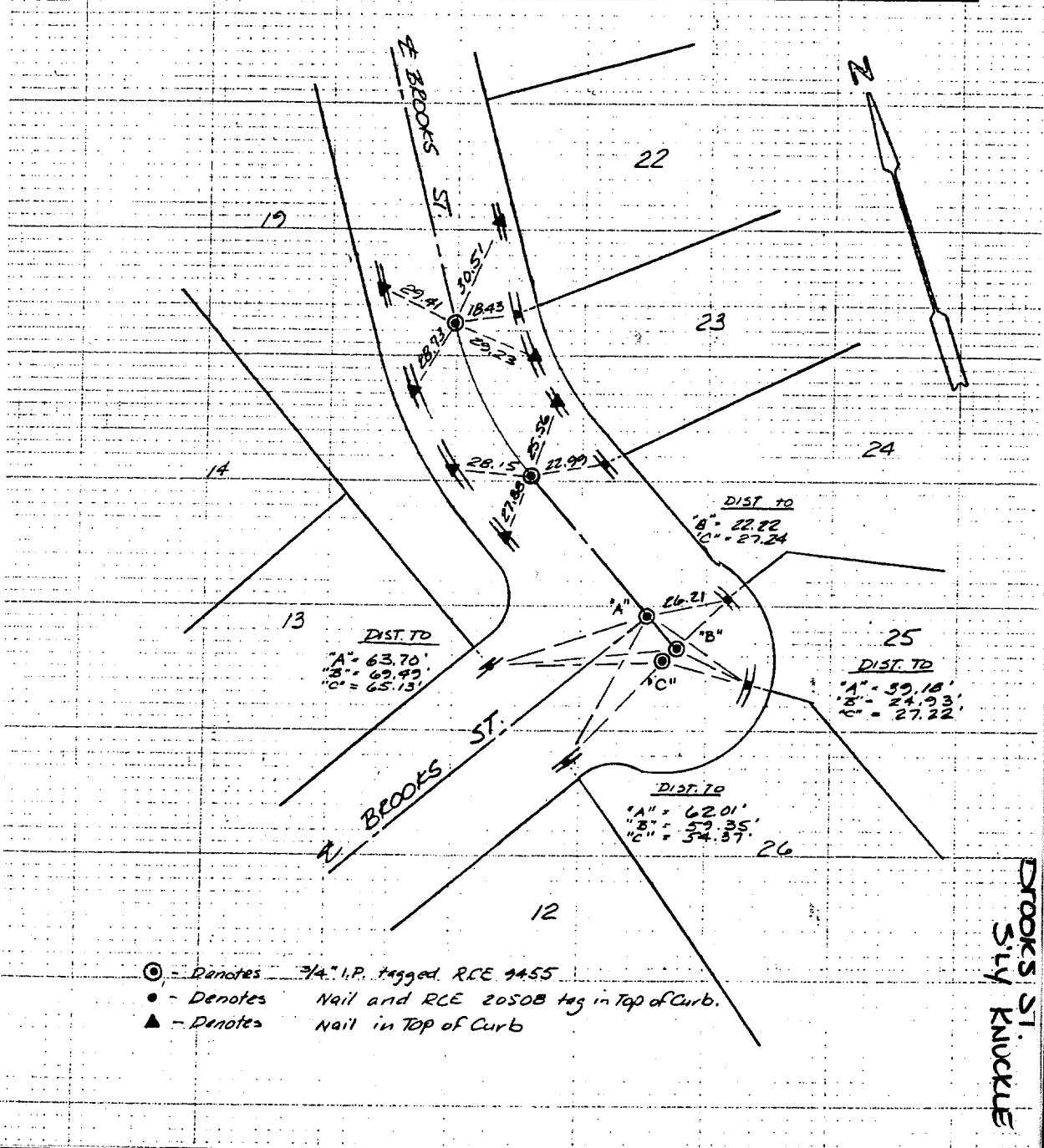


**SHALLER & LOHR, INC.**  
 1503 SOUTH COAST DRIVE - SUITE 203  
 COSTA MESA, CALIFORNIA 92626  
 (714) 754-5714  
 LAND PLANNING - CIVIL ENGINEERING -  
 SURVEYING

*E Ties on Brooks St.*  
 Tr. 17488 Riverside

JOB NO. \_\_\_\_\_  
 BY \_\_\_\_\_  
 DATE 10-4-85  
 SHT. 2 OF 4



Street: **BROOKS ST**  
 10196 TIF  
 X-Street: **BROOKS ST**  
 OFFICIAL USE ONLY  
 DROOKS ST. SLY KNUCKLE

- ✕ FD. Ramset Nail on T/C
- FD. "C" Nail on T/C
- FD. LD. & TK. on T/C
- Set LD. & TK. on T/C

Scale: \_\_\_\_\_  
 Date: \_\_\_\_\_  
 Drawn by: \_\_\_\_\_  
 N.O.: \_\_\_\_\_  
 F.B.: \_\_\_\_\_

**OFFICIAL TIE PLAT**  
**CITY OF RIVERSIDE**

*These ties are for the purpose of perpetuating the found monumentation. No claim is made as to the relationship of the points or lines shown hereon to true boundary locations.*

Sheet 1 of 1  
 File No.: \_\_\_\_\_