

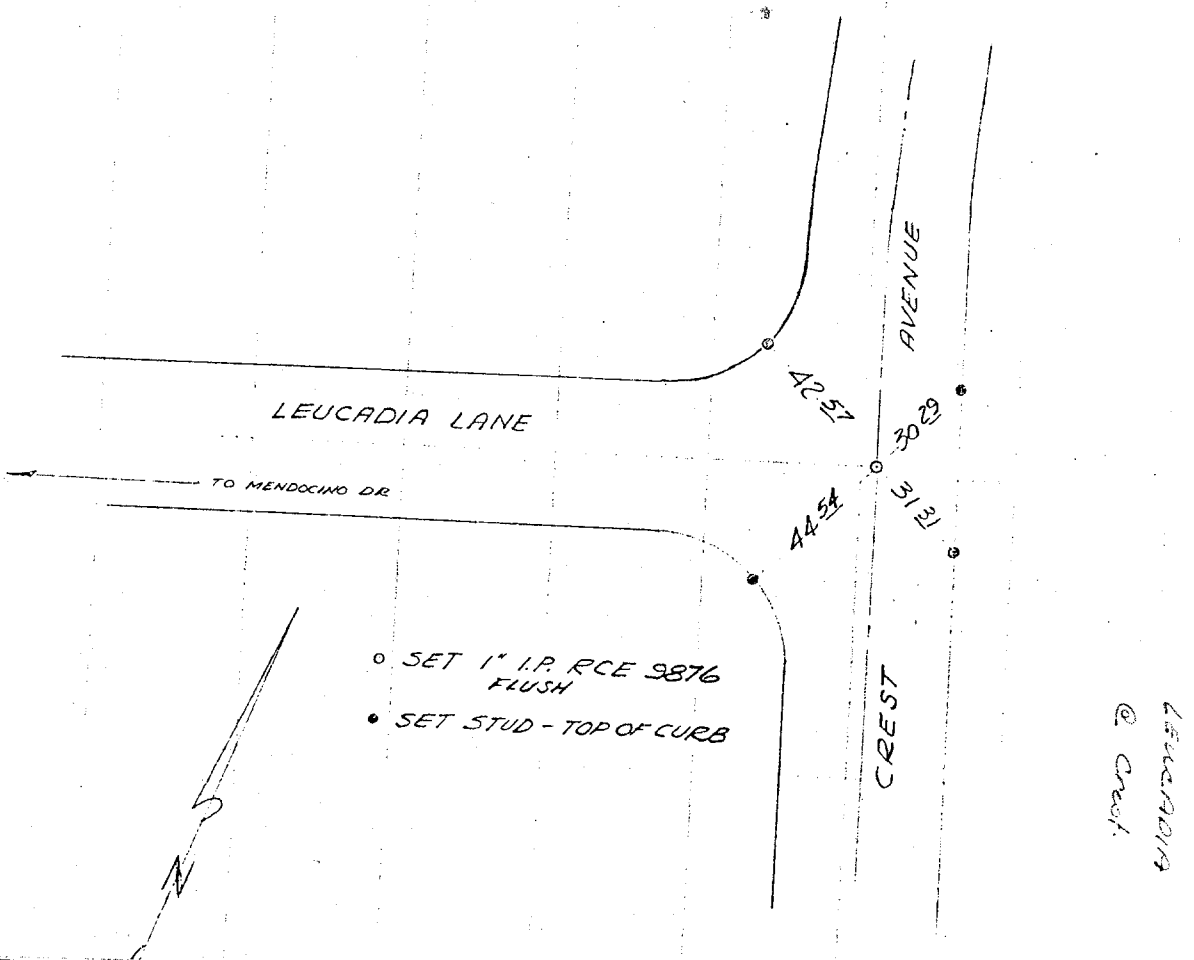
HISTORICAL DATA  
 A. WEBB FB 1031/193  
 TRACT 5522-1

☒ TIES  
 CREST AVE  
 LEUCADIA LANE

CREW  
 AGUILERA  
 EVANS  
 ROBERTSON  
 DEC 23, 1975

Street: **Leucadia**  
 10294 TIF

OFFICIAL USE ONLY  
 X-Street: **CREST**



- ☒ FD. Ramset Nail on T/C
- FD. LD. & TK. on T/C
- FD. "C" Nail on T/C
- Set LD. & TK. on T/C

Scale:  
 Date:  
 Drawn by:  
 P.O.:  
 B.:

**OFFICIAL TIE PLAT**  
**CITY OF RIVERSIDE**

*These ties are for the purpose of perpetuating the found monumentation. No claim is made as to the relationship of the points or lines shown hereon to true boundary locations.*

Sheet 1 of 1  
 File No.: