

Street: **ORANGE ST**  
10304 TIE

X-Street: **14TH**  
OFFICIAL USE ONLY

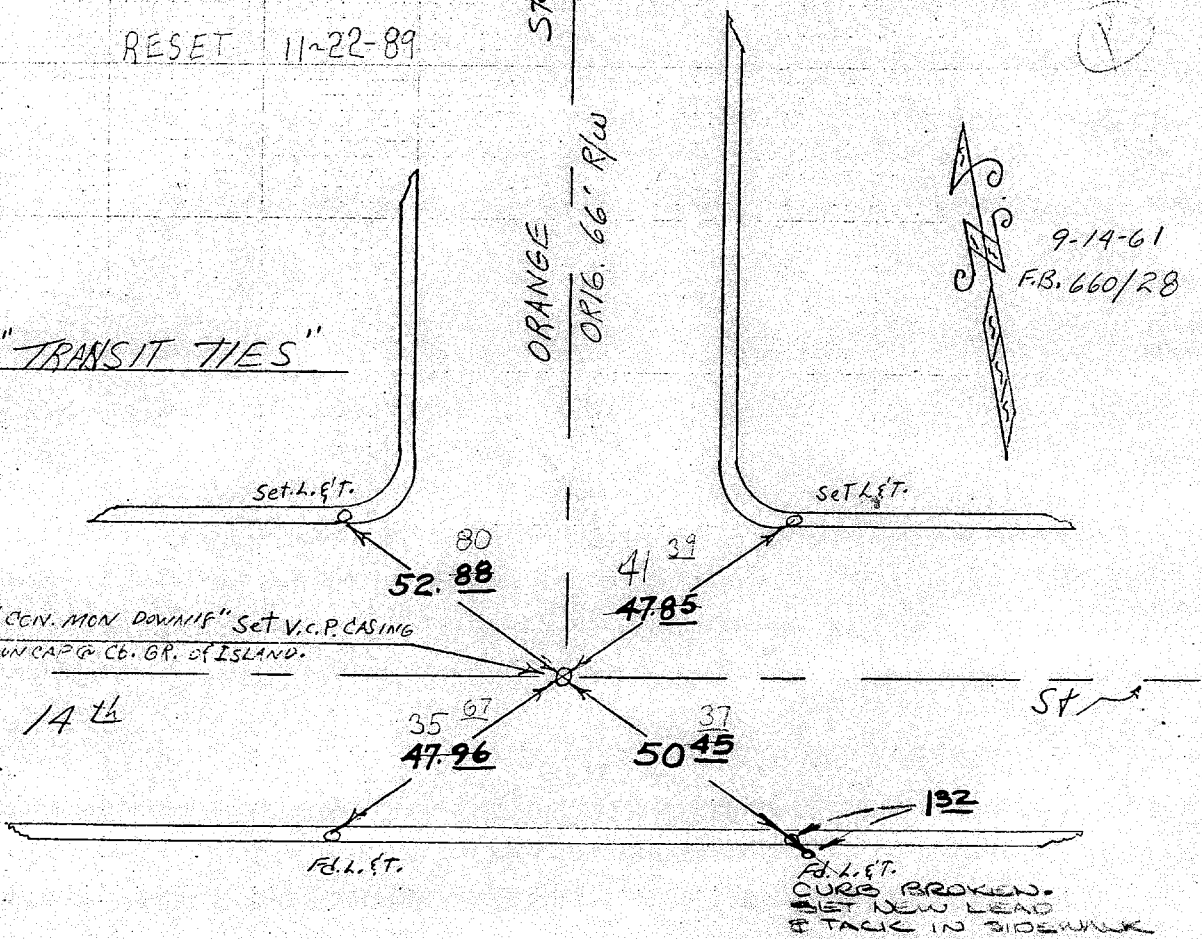
ORANGE ST.  
1-23-65 d.k.

RESET 11-22-89

ORANGE ST.  
ORIG. 66' R/W

9-14-61  
F.B. 660/28

"TRANSIT TIES"



B.M. = NAIL & LD. IN S.E. CB. ORANGE ST.  
& 14th ST. 25' ± S. OF S. R 14th ST.  
(ELEV = 847.144)

FIELD CKD  
MARCH 1972  
Hede

14TH STREET 21

- ✕ FD. Ramset Nail on T/C
- FD. "C" Nail on T/C

- FD. LD. & TK. on T/C
- Set LD. & TK. on T/C

# OFFICIAL TIE PLAT

## CITY OF RIVERSIDE

These ties are for the purpose of perpetuating the found monumentation. No claim is made as to the relationship of the points or lines shown hereon to true boundary locations.

Scale:  
Date:  
Drawn by:  
W.O.:  
F.B.:

Sheet 1 of 1  
File No.: