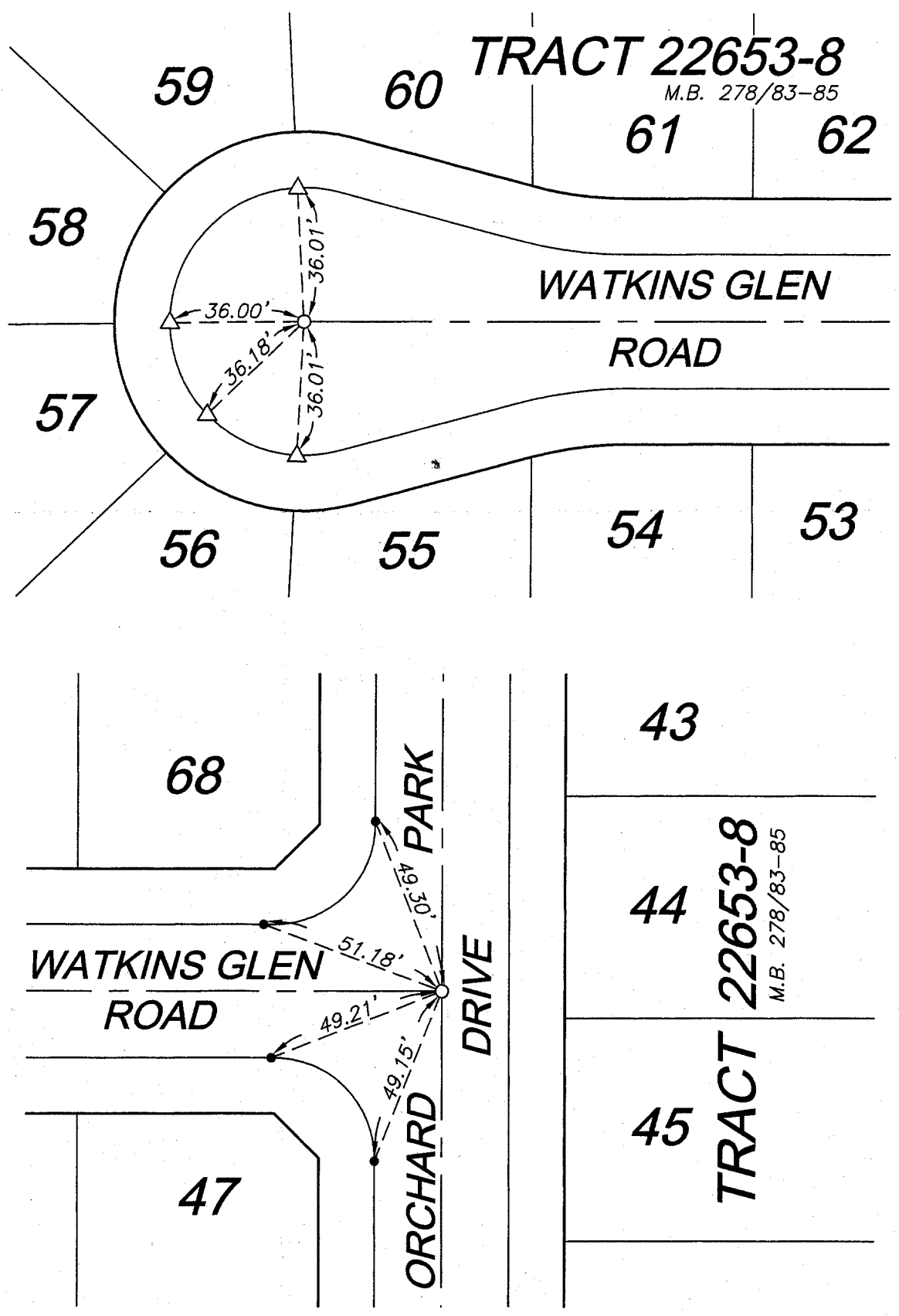


10659.TIF

STREET WATKINS GLEN RD. X-STREET ORCHARD PK DR./CUL-DE-SAC OFFICE USE ONLY

LEGEND

- -Set Ramset Nail On T.C.
- -Set 1" I.P. w/plastic plug stamped R.C.E. 17550, Flush.
- △ -Set Nail w/R.C.E. 17550 tag on top of curb at prolongation of side lot lines.
- x -Fd. lead & tack on top of concrete curb.



TRACT 22653-8

--- OFFICIAL TIE PLAT ---

CITY OF RIVERSIDE

SCALE: 1" = 40'
 DATE: 9-10-02
 DR. BY: C.E.G.
 W.O.: 1001-001

PREPARED BY: **C.E.G.** Canty Engineering Group, Inc.
 CIVIL ENGINEERING PLANNING SURVEYING
 2020 IOWA Avenue, Suite 102, Riverside, CA 92507
 P.O. Box 52050, Riverside, CA 92517 (909) 683-5234 FAX (909) 683-5301

SHEET
4
 OF 5 SHEETS