

STREET JOHN F. KENNEDY DR. / PALM VIEW LN. X-STREET BRANDING & IRON LN. / STROUT LN
 10774.TIF OFFICE USE ONLY

LEGEND

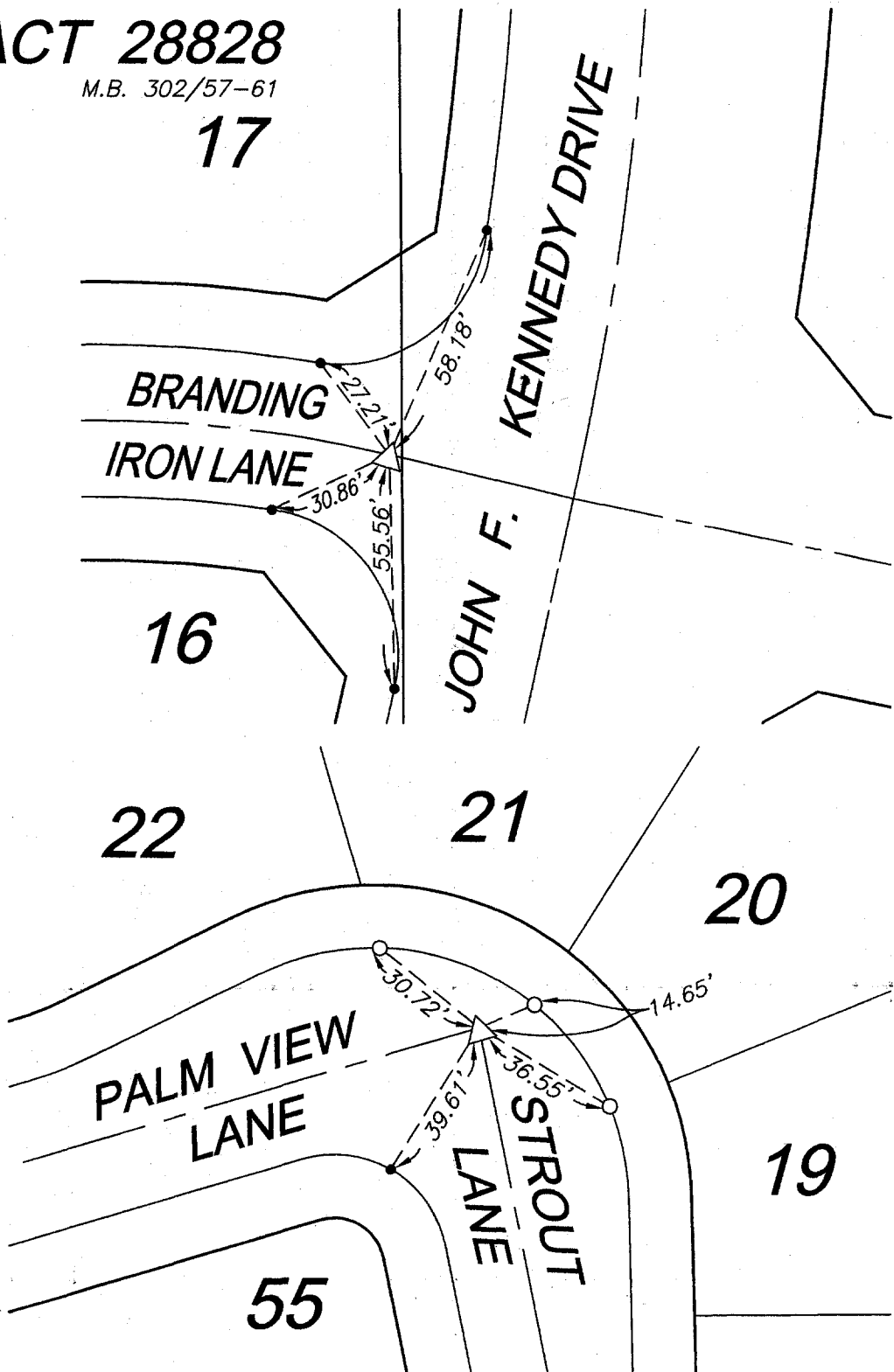
- -Set Nail on T.C.
- -Set Nail and R.C.E. 17550 Tag in top of curb at the prolongation of side lot lines.
- △ -Set 1/2" Spike w/R.C.E. 17550 tag, Flush.



TRACT 28828

M.B. 302/57-61

17



SCALE: 1" = 40'

DATE: 02-26-03

DR. BY: C.E.G.

W.O.: 1090-007

--- OFFICIAL TIE PLAT ---
CITY OF RIVERSIDE

PREPARED BY: **C.E.G.** Canty Engineering Group, Inc.
 CIVIL ENGINEERING PLANNING SURVEYING

2020 IOWA Avenue, Suite 102, Riverside, CA 92507
 P.O. Box 52050, Riverside, CA 92517 (909) 683-5234 FAX (909) 683-5301

SHEET

7

OF 7 SHEETS