

Scale:
Date:
Drawn by:
W.O.:
F.B.:

OFFICIAL TIE PLAT

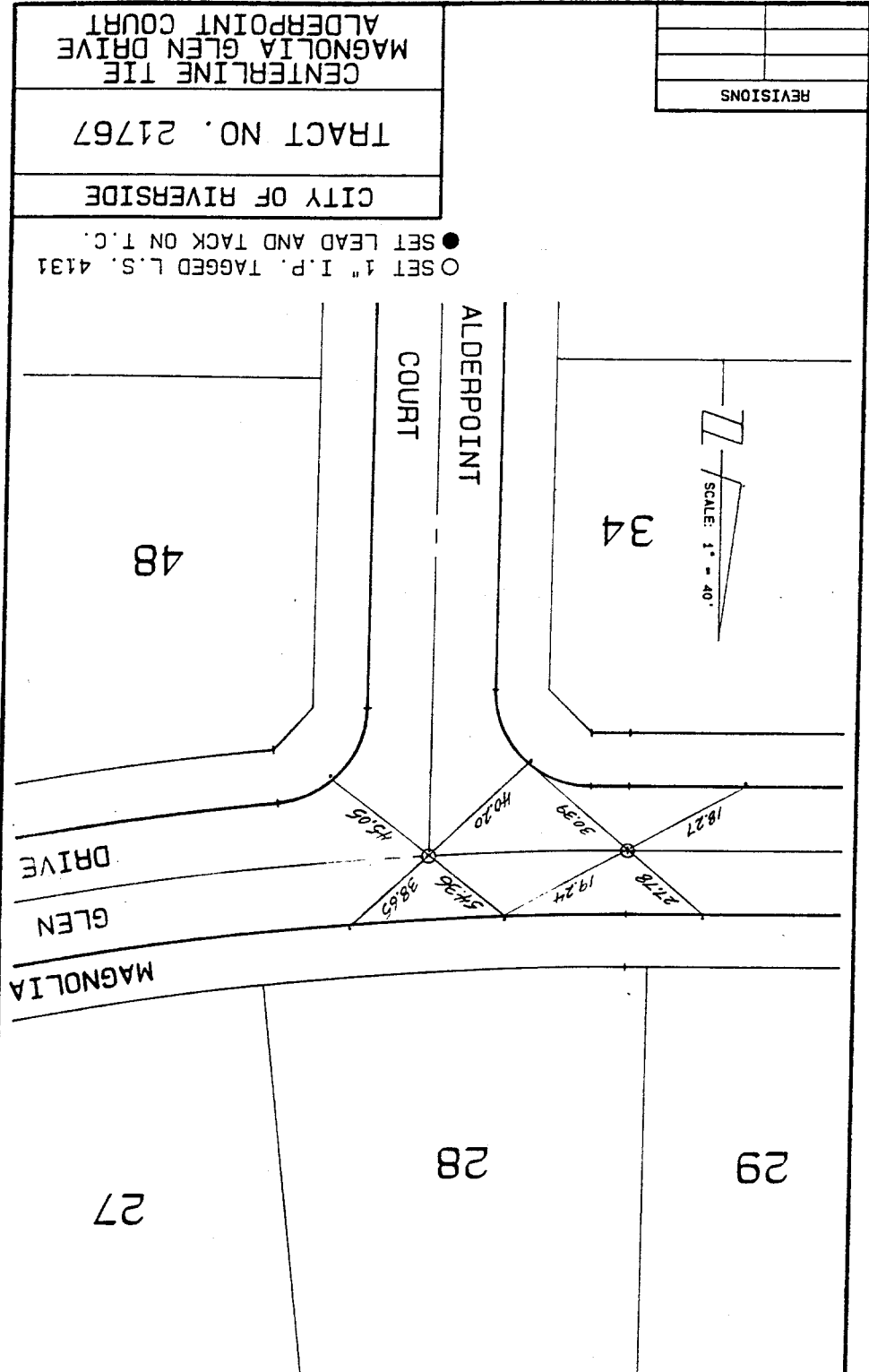
CITY OF RIVERSIDE

These ties are for the purpose of perpetuating the found monumentation. No claim is made as to the relationship of the points or lines shown hereon to true boundary locations.

File No.:
Sheet 1 of 1

FD. Ramset Nail on T/C
 FD. "C" Nail on T/C
 Set LD. & TK. on T/C
 FD. LD. & TK. on T/C

REVISIONS	



109.71F

Street: ALDERPOINT CT X-Street: MAGNOLIA GLEN DR
OFFICIAL USE ONLY

MAGNOLIA GLEN DRIVE