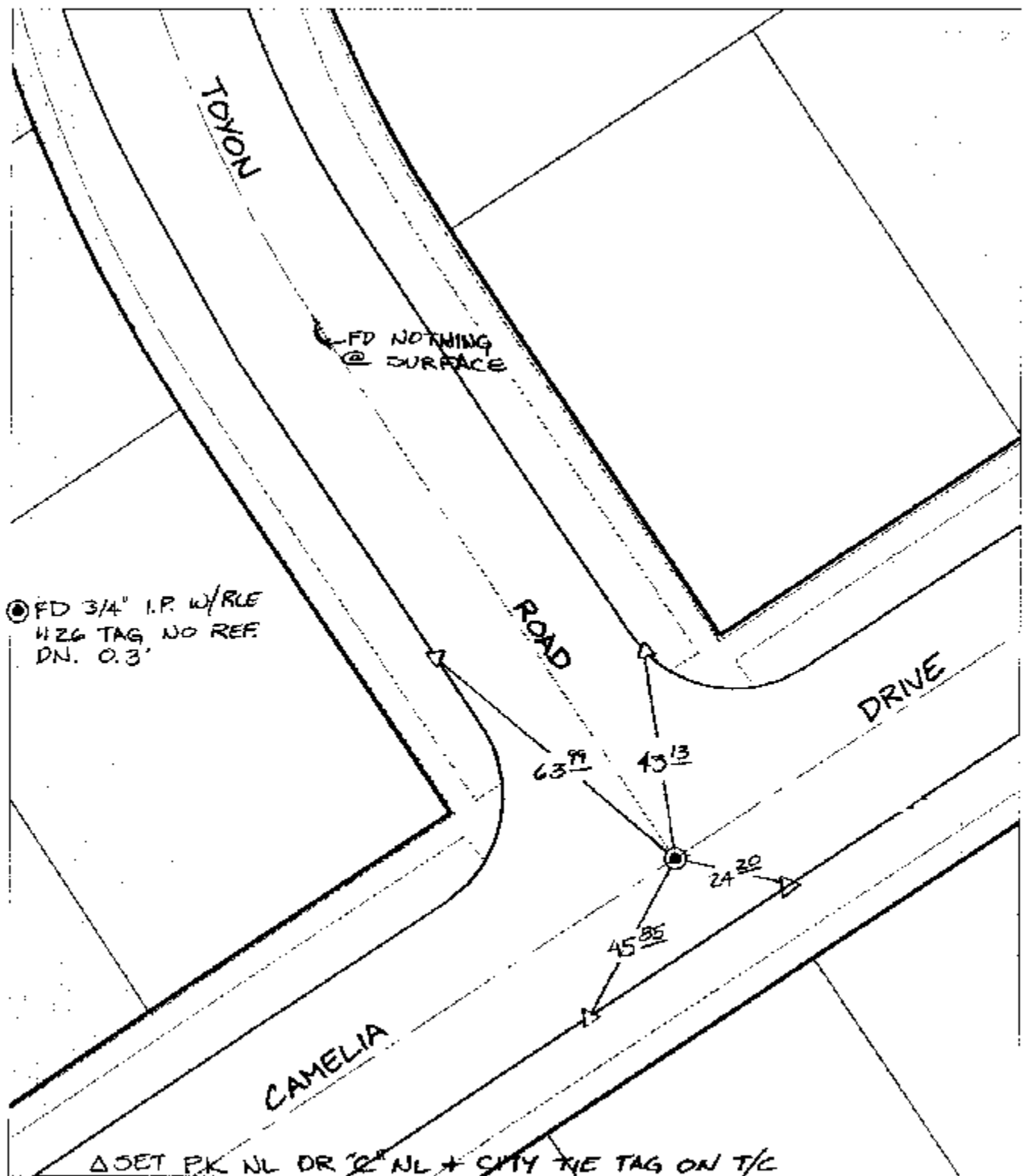


11258.715

Street: CAMELIA DRIVE X-Street: TOYON ROAD  
OFFICIAL USE ONLY



- 

Scale: 1" = 30'  
 Date: 12/24/03  
 Drawn by: SURVEY  
 F.B.:  
 TR-Sec: T3SR5W-6

## OFFICIAL TIE PLAT

### CITY OF RIVERSIDE

*These ties are for the purpose of perpetuating the found monumentation. No claim is made as to the relationship of the points or lines shown hereon to true boundary locations.*



Sheet 1 of 1  
 Cadme MB: 51-8