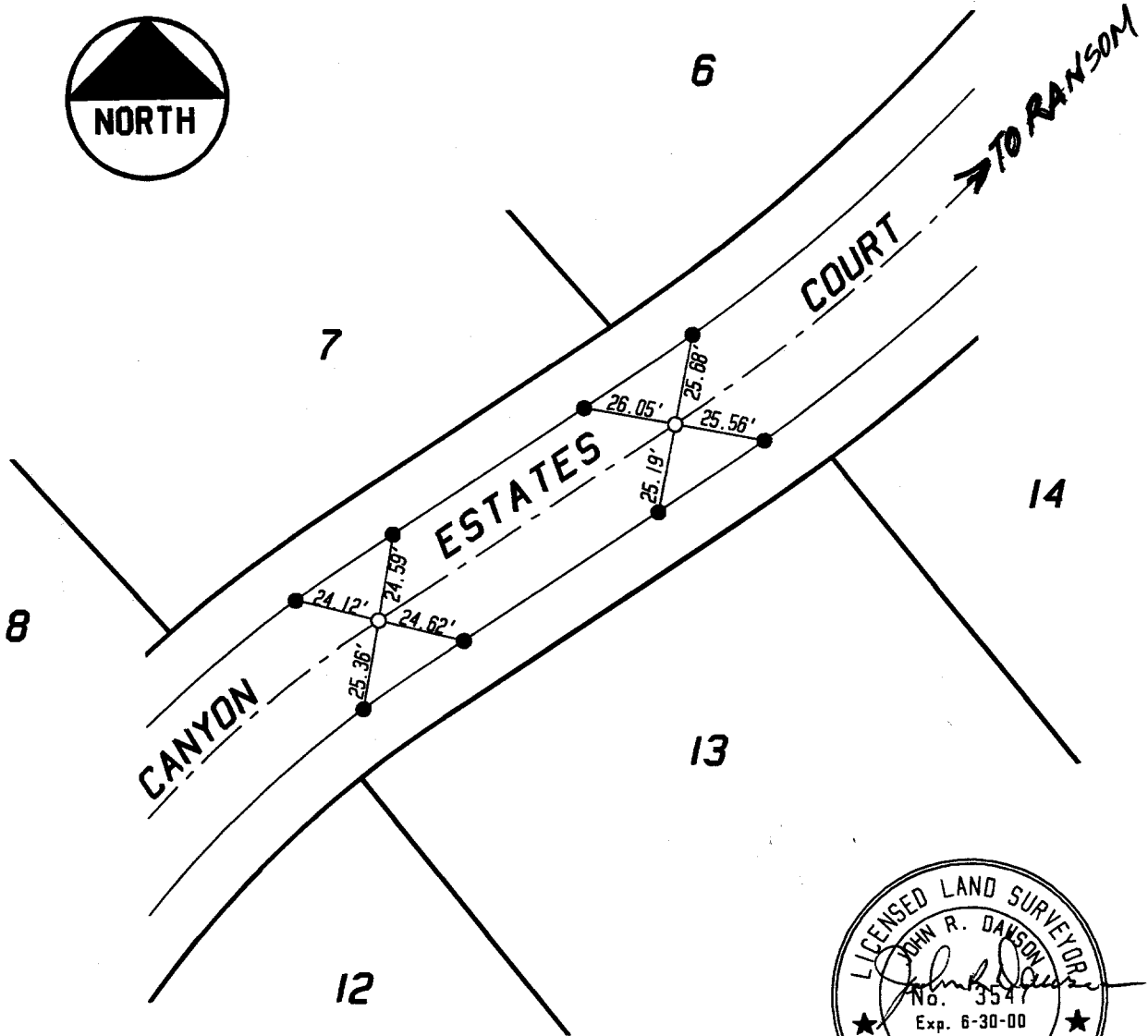


TRACT 25486-3

RECORDED IN M.B. 264/43-46

ALL TIES ARE TRANSIT TIES UNLESS OTHERWISE NOTED

- INDICATES SET 8" BOAT SPIKE AND WASHER FLUSH TAGGED L.S. 3547
- INDICATES SET NAIL IN TOP OF CURB
- ⊙ INDICATES SET NAIL AND L.S. TAG IN CURB ON LOT LINE PROJECTED UNLESS OTHERWISE NOTED



STREET CANYON ESTATES CT X-STREET B.C. & E.C. OFFICE USE ONLY

W.D. 128.06 DNG. TIESHTS IBERENI 25486-32

1142. TIF

SCALE: 1" = 50'
 DATE: 5-11-98
 DR. BY: SRD
 W.O.: 128.06
 F.B.: 1

OFFICIAL TIE PLAT CITY OF RIVERSIDE

PREPARED BY: **INTEGRA ENGINEERING, INC.**
 LAND SURVEYORS • CIVIL ENGINEERS
 621 E. CARNEGIE DRIVE, #120, SAN BERNARDINO, CA 92408
 TELEPHONE (909) 383-0200 FAX (909) 383-0203

SHEET 2
 OF 3 SHEETS
 FILE No.: