

Street: CANYON HILL DR

OFFICIAL USE ONLY

X-Street:

RECEIVED
APR 6 1989

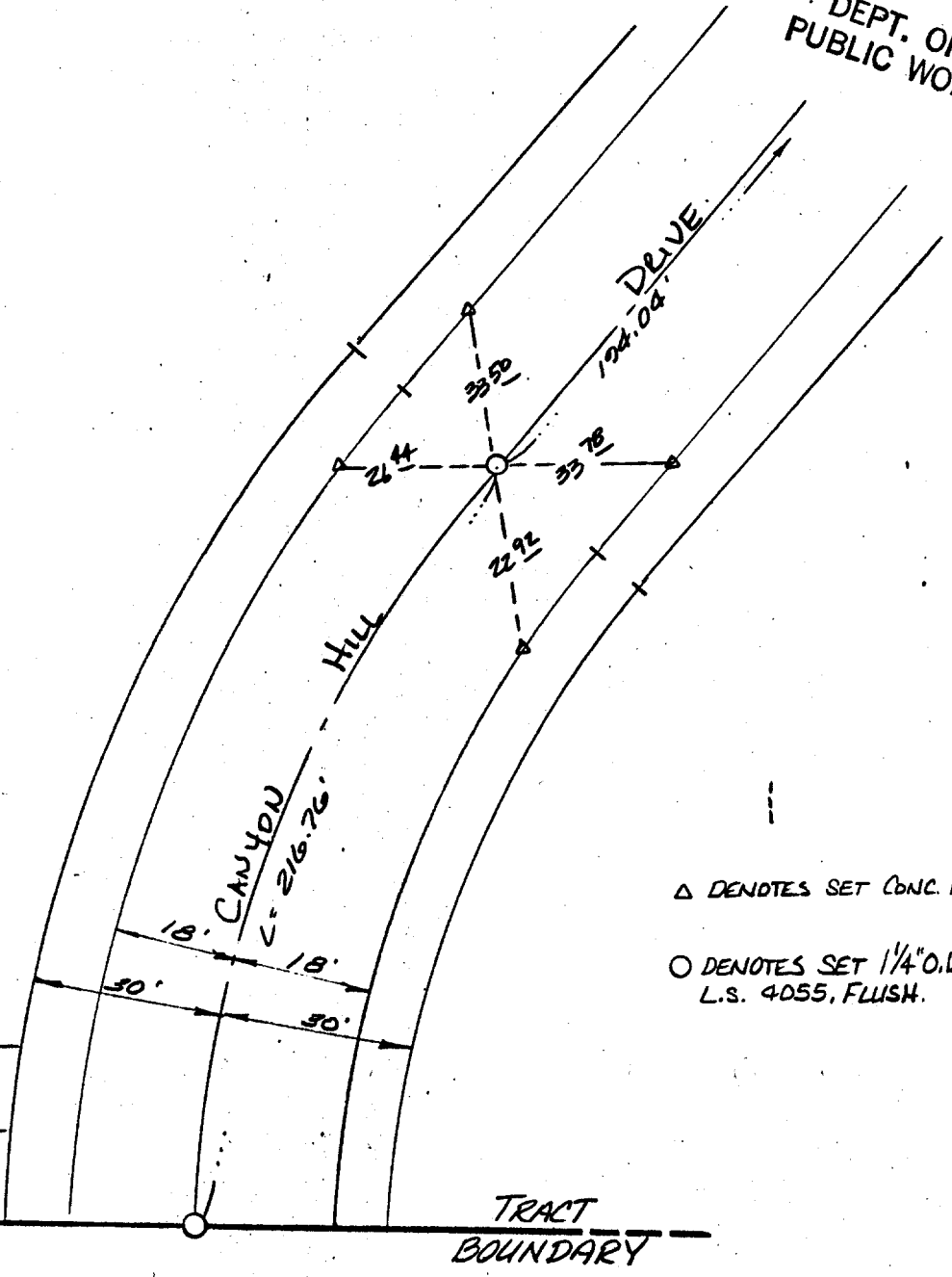
DEPT. OF
PUBLIC WORKS

1147. TIF



2

3
4



△ DENOTES SET CONC. NAIL IN

○ DENOTES SET 1/4" O.D.I.P. TAGG
L.S. 4055, FLUSH.

× FD. Ramset Nail on T/C
■ FD. "C" Nail on T/C

● FD. LD. & TK. on T/C
○ Set LD. & TK. on T/C

OFFICIAL TIE PLAT

CITY OF RIVERSIDE

These ties are for the purpose of perpetuating the found monumentation. No claim is made as to the relationship of the points or lines shown hereon to true boundary locations.

TRACT 21156-2

Sheet 1 of 1
File No.:

Scale:
Date:
Drawn by:
W.O.:
F.B.: