

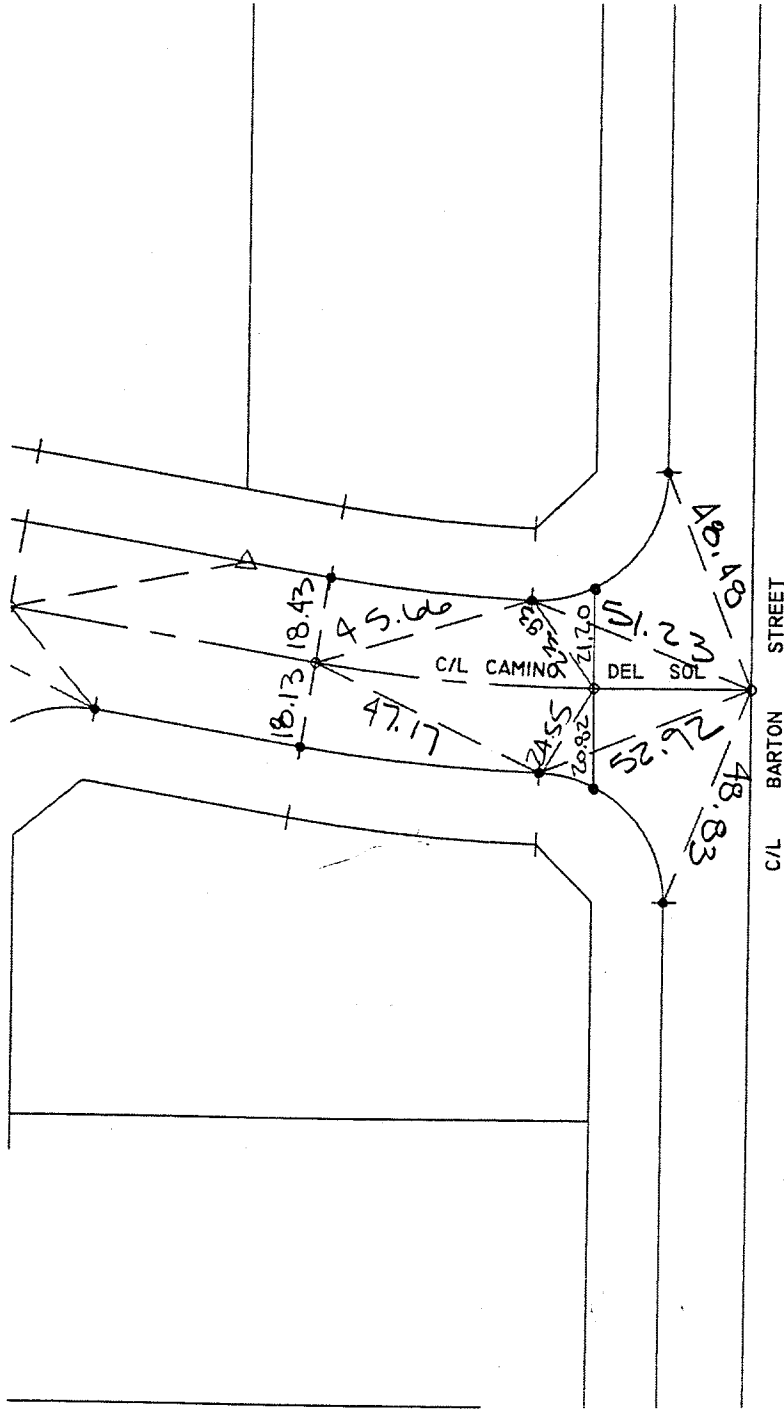
PADILLA, COLAYSIU 9-398

STREET: CAMINO DEL SOL X-STREET BARTON STREET

OFFICE USE ONLY

**LEGEND**

- O -- SET 1" I.P. w/RCE 17550 PASTIC PLUG FLUSH
- -- SET RAMSET NAIL ON T.C.
- △ -- SET NAIL w/RCE 17550 TAG ON T.C.
- ⊙ -- SET SPIKE w/WASHER STAMPED RCE 17550 FLUSH



TR.27982-3

SCALE: 1"=40'

DATE: 9.3.98

DR. BY: PAP

F.B.:

# OFFICIAL TIE PLAT CITY OF RIVERSIDE



CANTY ENGINEERING GROUP, INC.  
CIVIL ENGINEERING - PLANNING - SURVEYING

2020 IOWA AVENUE, SUITE A-102, P.O. BOX 52050, RIVERSIDE, CA 92517  
TEL (909) 683 - 5234 FAX (909) 683 - 5301

SHEET

1

OF 9 SHEETS

FILE NO:

1092-006

1160-FIF