

11667.TIF

Street:

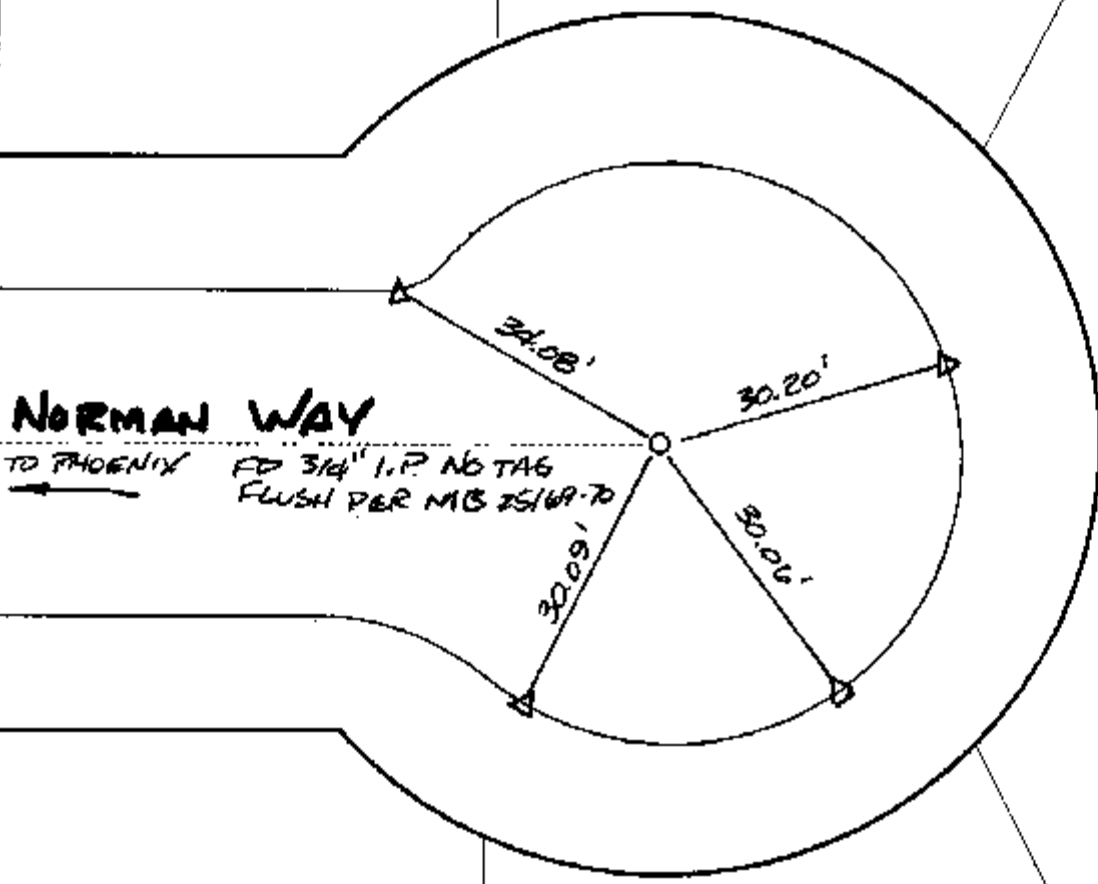
NORMAN WAY

X-Street:

CUL-DE-SAC E.L.Y

OFFICIAL USE ONLY

SURV TIES



NORMAN WAY

TO PHOENIX FD 3/4" I.P. NO TAG
FLUSH PER MB 25169-70

△ SET C-NAIL CITY TIE TAG IN T.C.

REF. MB 25169-70

- × FD. Ramset Nail on T/C ● FD. LD. & TK. on T/C
- FD. "C" Nail on T/C ○ Set LD. & TK. on T/C

P.K. and City Engineer tag to be set @ surface after street construction is complete. (if possible)

Scale: 1" = 20'
 Date: 02/11/05
 Drawn by: scurtis
 F.B.:
 TR-Sec: T2SR5W-32

OFFICIAL TIE PLAT

CITY OF RIVERSIDE



These ties are for the purpose of perpetuating the found monumentation. No claim is made as to the relationship of the points or lines shown hereon to true boundary locations.

Sheet 1 of 1
 Cadme MB: 52-1