

11468.71F

Street:

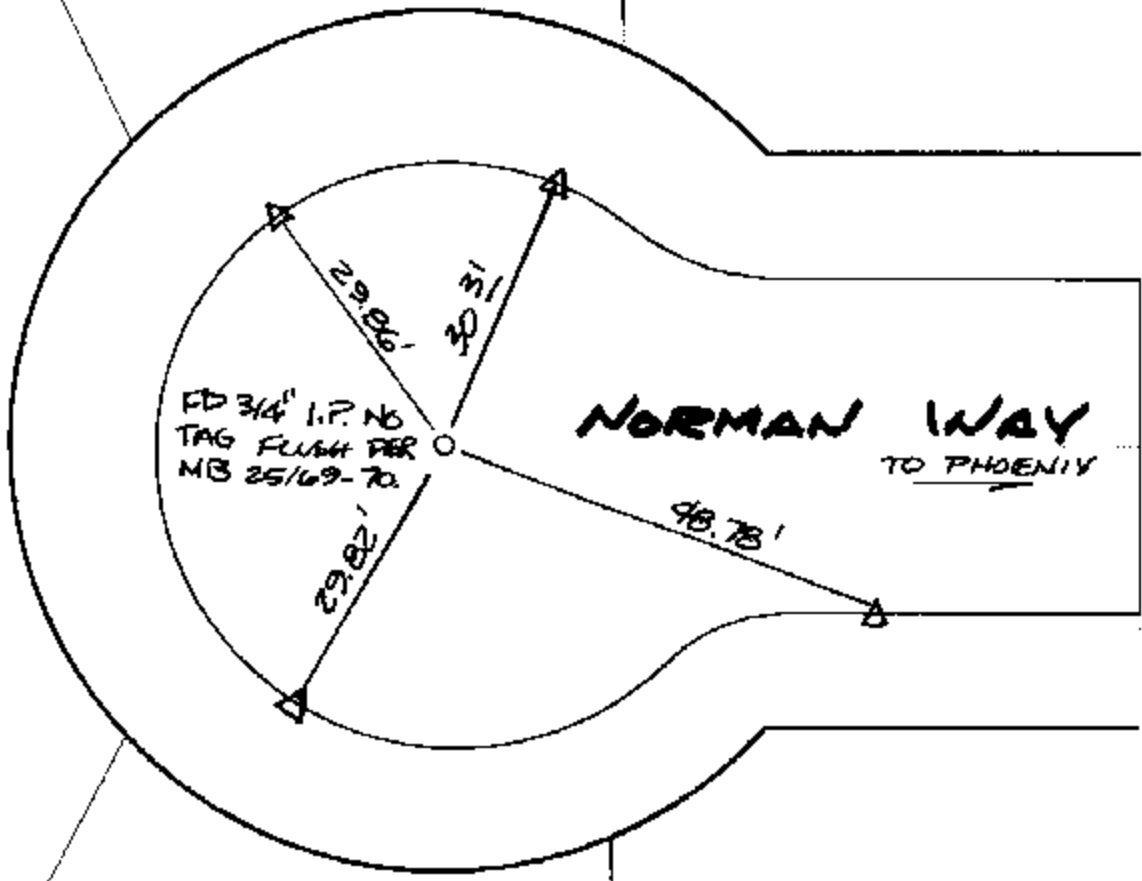
NORMAN WAY

X-Street:

CUL-DE-SAC

OFFICIAL USE ONLY

OWNERS TIES



NORMAN WAY
TO PHOENIX

FD 3/4" I.P. NO
TAG FLUSH PER
MB 25/69-70

△ - SET C-NAIL & CITY TIE TAG IN T.C.

REF. M.B. 25/69-70

- ✕ FD. Ramset Nail on T/C ● FD. LD. & TK. on T/C
- FD. "C" Nail on T/C ○ Set LD. & TK. on T/C

P.K. and City Engineer tag to be set @ surface after street construction is complete. (If possible)

Scale: 1" = 20'
 Date: 02/11/05
 Drawn by: scurtis
 F.B.:
 TR-Sec: T2SR5W-32

OFFICIAL TIE PLAT

CITY OF RIVERSIDE

These ties are for the purpose of perpetuating the found monumentation. No claim is made as to the relationship of the points or lines shown hereon to true boundary locations.



Sheet 1 of 1
 Cadme MB: 52-1