

11703.TIF

Street:

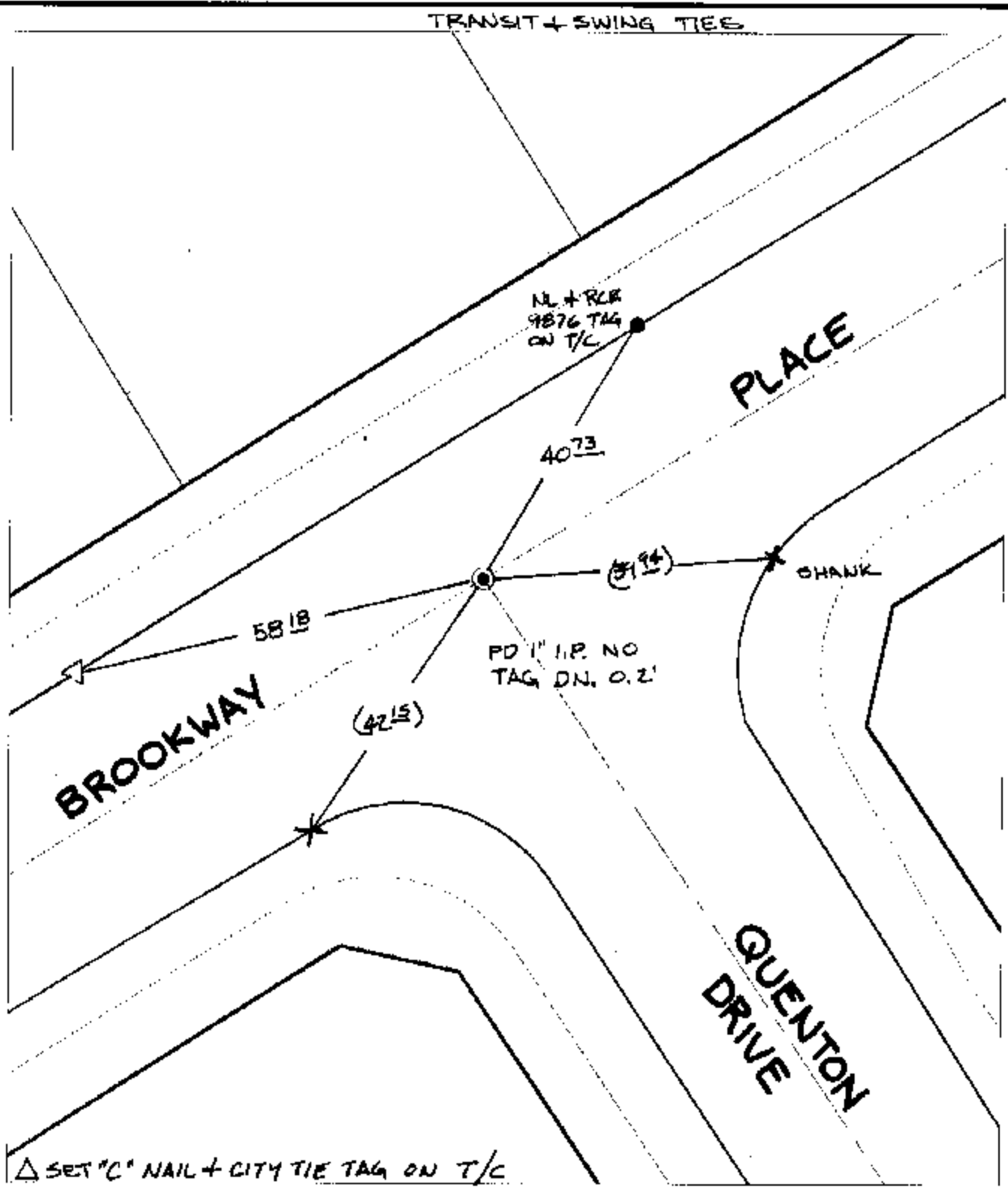
BROOKWAY PLACE

OFFICIAL USE ONLY

X-Street:

QUENTON DRIVE

TRANSIT + SWING TIES



△ SET "C" NAIL + CITY TIE TAG ON T/C

- × FD. Ramset Nail on T/C
- FD. LD. & TK. on T/C
- FD. "C" Nail on T/C
- Set LD. & TK. on T/C

P.K. and City Engineer tag to be set @ surface after street construction is complete. (If possible)

Scale: 1" = 20'  
 Date: 11/20/04  
 Drawn by: survey  
 F.B.:  
 TR-Sec: T3SR6W-12

## OFFICIAL TIE PLAT

### CITY OF RIVERSIDE

*These ties are for the purpose of perpetuating the found monumentation. No claim is made as to the relationship of the points or lines shown hereon to true boundary locations.*



Sheet 1 of 1  
 Cadme MB: 64-6