

# TRACT 28491-4

M.B. 293/56-58

11825.TIF

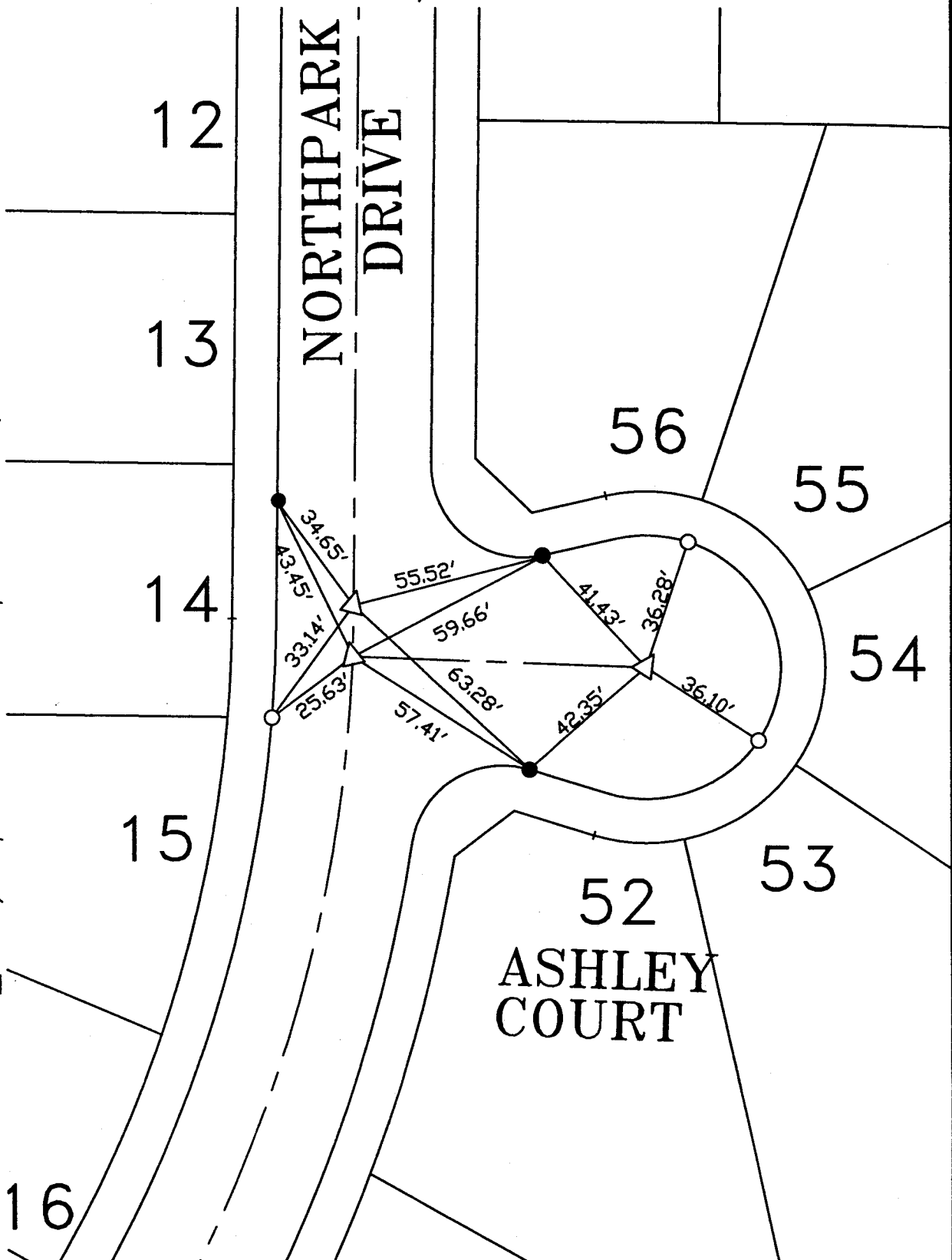
X-STREET NORTH PARK DR.

STREET ASHLEY CT.

OFFICE USE ONLY

**LEGEND**

- -Set Nail on T.C.
- -Set Nail and R.C.E. 17550 Tag in top of curb at the prolongation of side lot lines.
- △ -Set 1/2" Spike with Washer Stamped R.C.E. 17750, Flush.



SCALE: 1" = 40'

DATE: 11/21/03

DR. BY: C.E.G.

W.O.: 1009-03

**--- OFFICIAL TIE PLAT ---**  
CITY OF RIVERSIDE

PREPARED BY: **C.E.G.** *Canty Engineering Group, Inc.*  
CIVIL ENGINEERING PLANNING SURVEYING

2010 IOWA Avenue, Suite 110, Riverside, CA 92507  
P.O. Box 52050, Riverside, CA 92517 (951) 683-5234 FAX (951) 683-5301

SHEET

**3**

OF 6 SHEETS