

11832.TIF

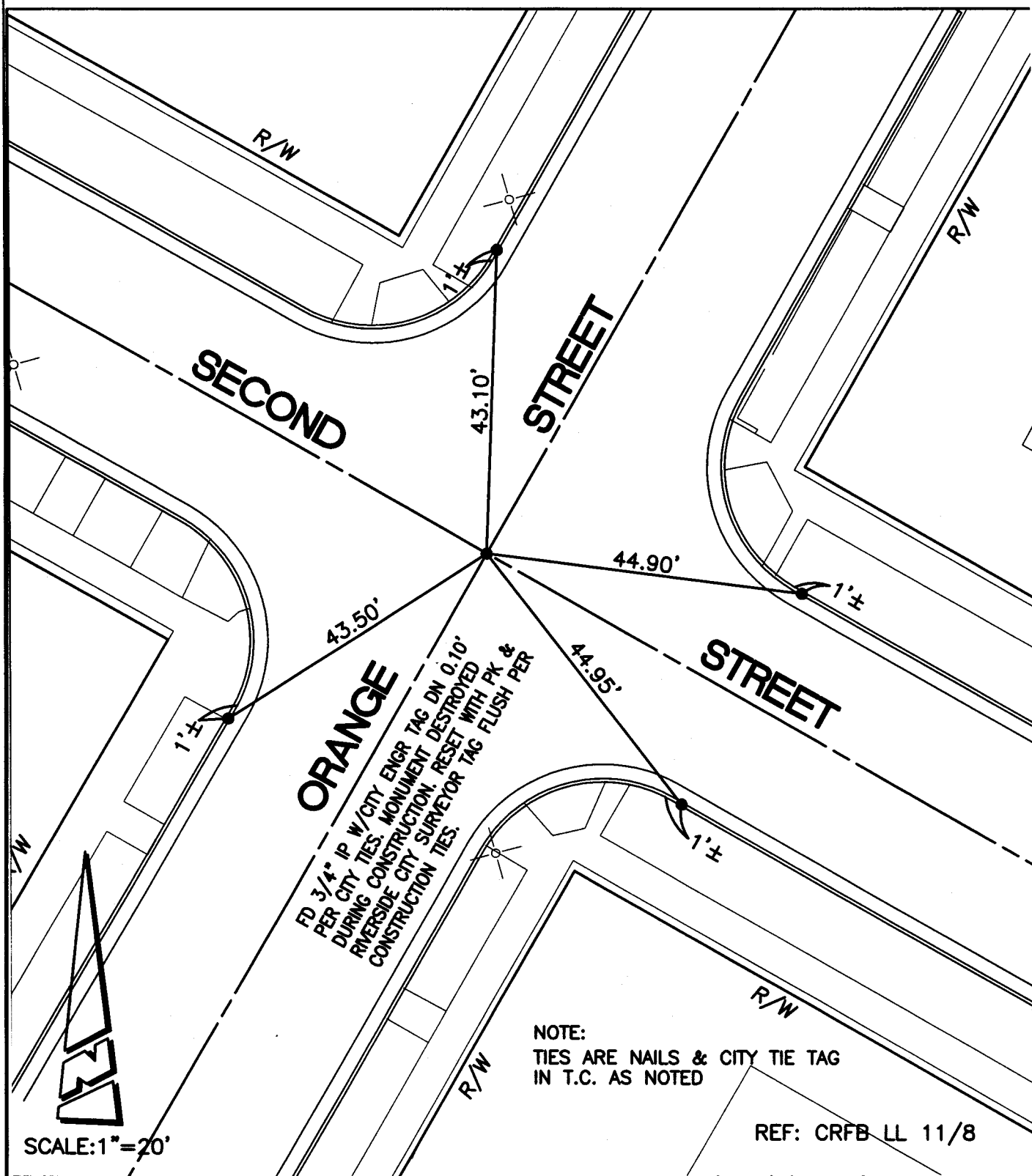
Street:

2ND STREET

X-Street:
OFFICIAL USE ONLY

ORANGE STREET

SWING TIES



FD 3/4" IP W/CITY ENGR TAG DN 0.10'
 PER CITY TIES. MONUMENT DESTROYED
 DURING CONSTRUCTION. RESET WITH PK &
 RIVERSIDE CITY SURVEYOR TAG FLUSH PER
 CONSTRUCTION TIES.

NOTE:
 TIES ARE NAILS & CITY TIE TAG
 IN T.C. AS NOTED

REF: CRFB LL 11/8

SCALE: 1" = 20'

Scale: 1" = 20'
 Date: 12/14/05
 Drawn by: scurtis
 F.B.:
 TR-Sec: T3SR4W-5

OFFICIAL TIE PLAT CITY OF RIVERSIDE

These ties are for the purpose of perpetuating the found monumentation. No claim is made as to the relationship of the points or lines shown hereon to true boundary locations.



Sheet 1 of 1
 Cadme MB: 57-8