

RECOVERY NOTES

BN 34

38

SEG 7 TWP 2 S RGE 4 W  
 Date 11-7-73 Temp 70° WO\*  
 Party SHER, CONNER, NEAL, MARTINEZ Origination Riv. Co. Sur.

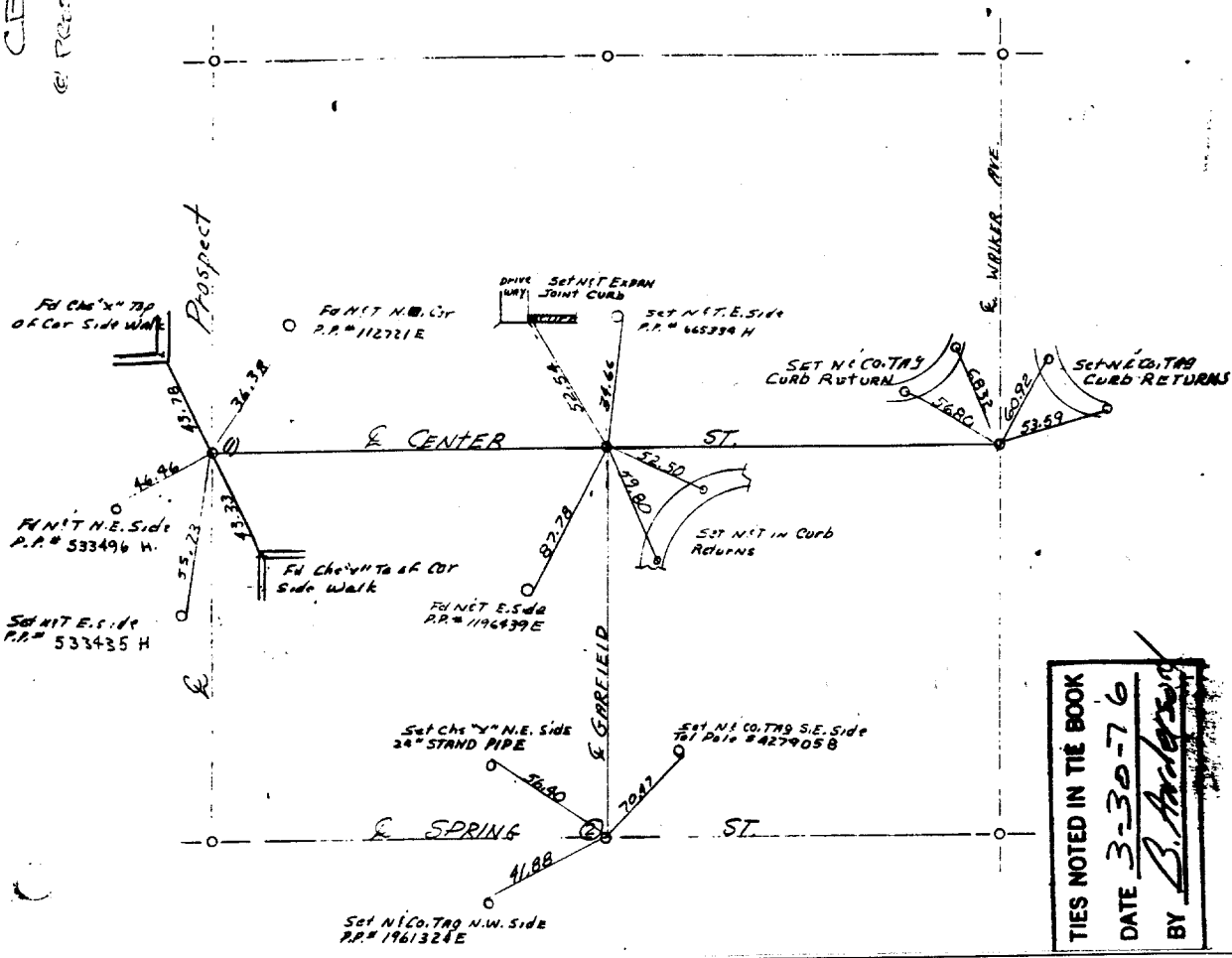
REFERENCES & NOTES

- ① FD 1 1/2" I.D. AN 10° No. TAG Pavement X° Ties See TBS/24, 25, 29
- ② FD 2 1/2" X° TIES FOR INTERSECTIONS OF GARFIELD ST. & SPRING ST.
- ③ FD 1 1/2" I.D. No. TAG AN 15° Pavement X° Ties
- ④ FD 1 1/2" I.D. For Enter of Center St. & Walker Ave

TB 34/38

2265 T.F.  
 CENTER ST.  
 PROSPECT & WALKER

Street: CENTER ST.  
 X-Street: PROSPECT & WALKER  
 OFFICIAL USE ONLY



TIES NOTED IN THE BOOK  
 DATE 3-30-76  
 BY B. Anderson

- ✕ FD. Ramset Nail on T/C
- FD. LD. & TK. on T/C
- FD. "C" Nail on T/C
- Set LD. & TK. on T/C

Scale:  
 Date:  
 Drawn by:  
 W.O.:  
 F.B.:

OFFICIAL TIE PLAT  
 CITY OF RIVERSIDE

These ties are for the purpose of perpetuating the found  
 monumentation. No claim is made as to the relationship of  
 the points or lines shown hereon to true boundary locations.

Sheet 1 of 1  
 File No.: