

TRANSIT TIES @ INT.

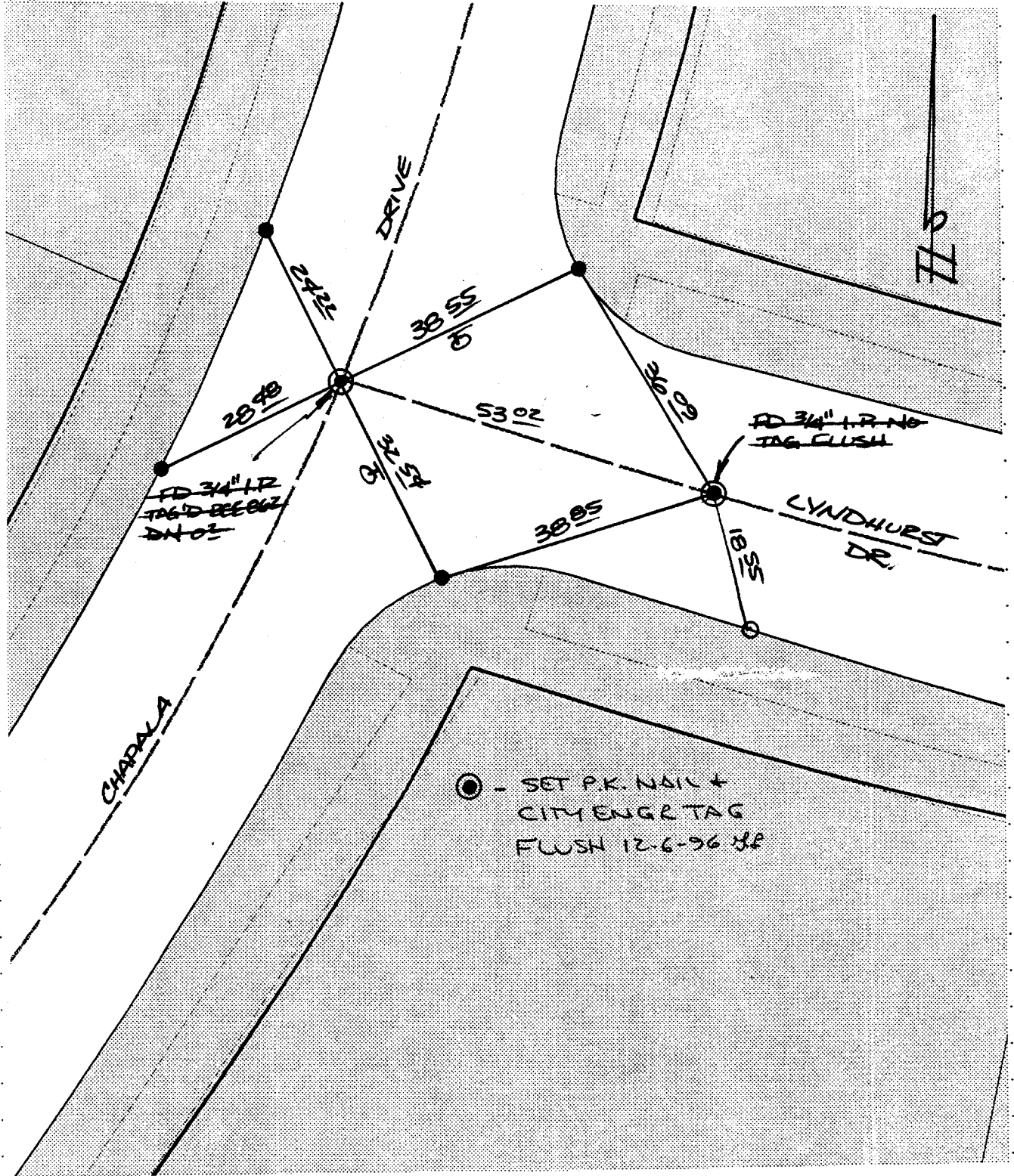
SWING TIES @ B.C.

1302. TIF

X-STREET CHAPALA DRIVE

OFFICE USE ONLY

STREET LINDHURST DRIVE



- ✕ FD. Ramset Nail on T/C
- FD. LD. & TK. on T/C
- FD. "C" Nail on T/C
- SET LD. & TK. On T/C

○ - SET P.K. NAIL + CITY ENGR TAG FLUSH 12-6-96 JLF

SCALE: 1" = 20'
 DATE: 7/12/96
 DR. BY: CURT
 W.O.:
 F.B.:

OFFICIAL TIE PLAT
 CITY OF RIVERSIDE

These ties are for the purpose of perpetuating the found monumentation. No claim is made as to the relationship of the points or lines shown hereon to true boundary locations.

SHEET
 OF SHEETS
 FILE NO.: